

FUTURE PETROLEUM COMPANY, LLC
B. HORINEK LEASE
E. 1/2, SECTION 4, T1S, R33W
RAWLINS COUNTY, KANSAS

NO ROAD

GRAVEL ROAD

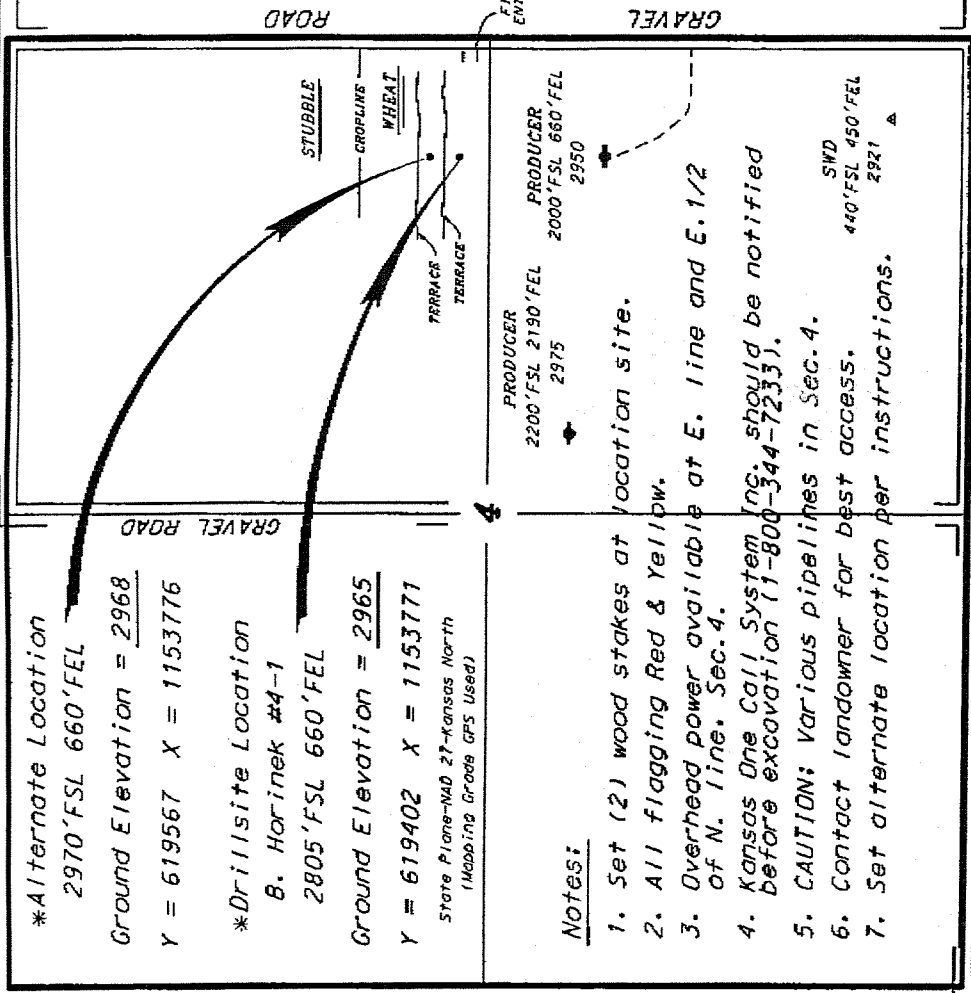
***Alternate Location**

2970'FSL 660'FEL
 Ground Elevation = 2968
 Y = 619567 X = 1153776

***Drillsite Location**

B. Horinek #4-1
 2805'FSL 660'FEL
 Ground Elevation = 2965
 Y = 619402 X = 1153771
 State Plane-NAD 27-Kansas North
 (Missing Grade GPS Used)

*Ingress and egress to location as shown on this plot is per usage only and may not be legally opened for public use. Contact landowner, tenant and county road department for access.

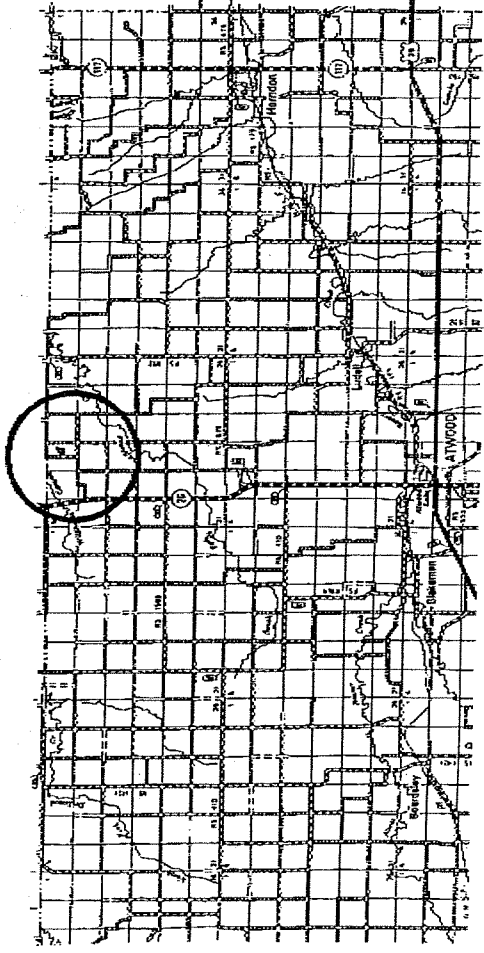


Notes:

1. Set (2) wood stakes at location site.
2. All flagging Red & Yellow.
3. Overhead power available at E. line and E. 1/2 of N. line, Sec. 4.
4. Kansas One Call System Inc. should be notified before excavation (1-800-344-7233).
5. CAUTION: Various pipelines in Sec. 4.
6. Contact landowner for best access.
7. Set alternate location per instructions.

GRAVEL

ROAD



* Controlling data is based upon the best map and measurements available to us and upon a popular section of land containing 640 acres.
 * Accurate section lines were determined using the corner bearings of corners of oilfield boundaries with a total station. The location of the corners, the section corners, when established in the precise section lines, were not measured. Therefore, the accuracy of the location of the drill site location in the section is not guaranteed. The location of the drill site location is based on the location of the section corners. The location of the section corners is based on the location of the section corners. The location of the section corners is based on the location of the section corners. The location of the section corners is based on the location of the section corners.
 * Elevations derived from National Geodetic Vertical Datum.