



79-82



Customer: *Bowers Pulping Co.*  
 Mill: *Hayward*  
 Field: *Flinders*  
 County: *Stanley* Lat: *34° 10' N*  
 Location: *C-142 NE NW*  
 Section: *30*  
 Township: *23S*  
 Range: *11W*  
 Elevation: *3500 feet*  
 Date: *10/15/51*  
 Operator: *Kelly Bickling*  
 Instrument: *ONE*  
 Type: *GM*  
 Model: *4600*  
 Serial: *4599*  
 Range: *1000*  
 Scale: *2000*

By: *J. H. McPherson*  
 Mr. McPherson

**WEST**

**INSTRUMENT DATA**

GAMMA RAY			NEUTRON		
MODEL NO.	<i>ONE</i>		MODEL NO.		
FACTORY NO.			LOG TYPE		
EXPOSED	<i>3510</i>		LOG MODEL NO.		
DETECTOR MODEL NO.			SERIAL		
TYPE	<i>Counter</i>		DETECTOR MODEL NO.		
LENGTH			TYPE		
DISTANCE TO SOURCE			LOGGING		
			SOURCE MODEL NO.		
MODEL TRUCK NO.	<i>104</i>		SERIAL NO.		
INSTRUMENT TRUCK NO.			SPACED		
TRUCK SERIAL NO.			TYPE		
			SERIAL		

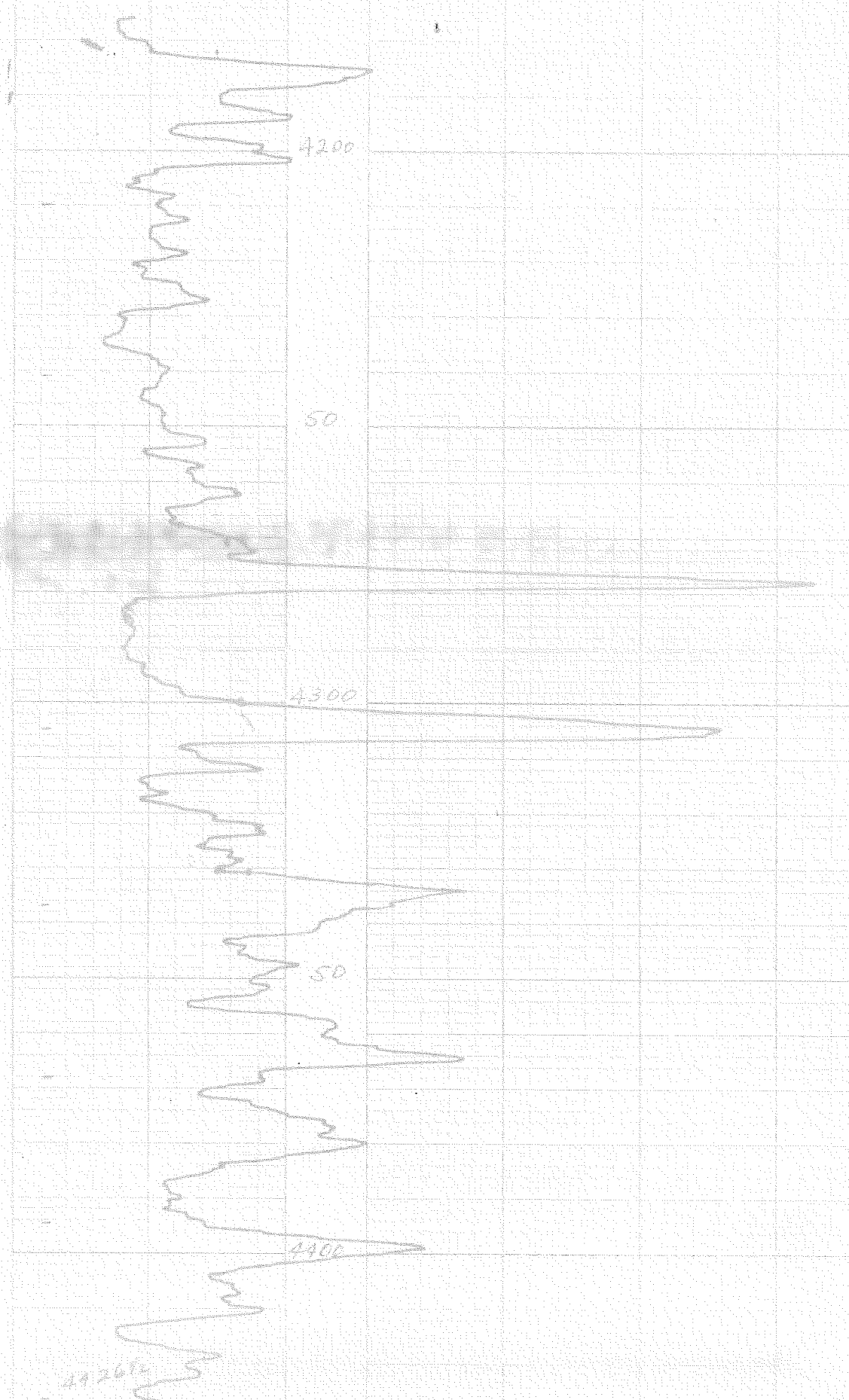
**LOGGING DATA**

GAMMA RAY					NEUTRON			
ROW NO.	DEPTH	TRUCK	LOG	TIME	APPROX. COUNTS PER LOG CUT	LOG TYPE	APPROX. COUNTS PER LOG CUT	APPROX. COUNTS PER LOG CUT
<i>ONE</i>	<i>4600</i>	<i>4200</i>	<i>30</i>	<i>216</i>	<i>9000</i>	<i>1.2</i>		

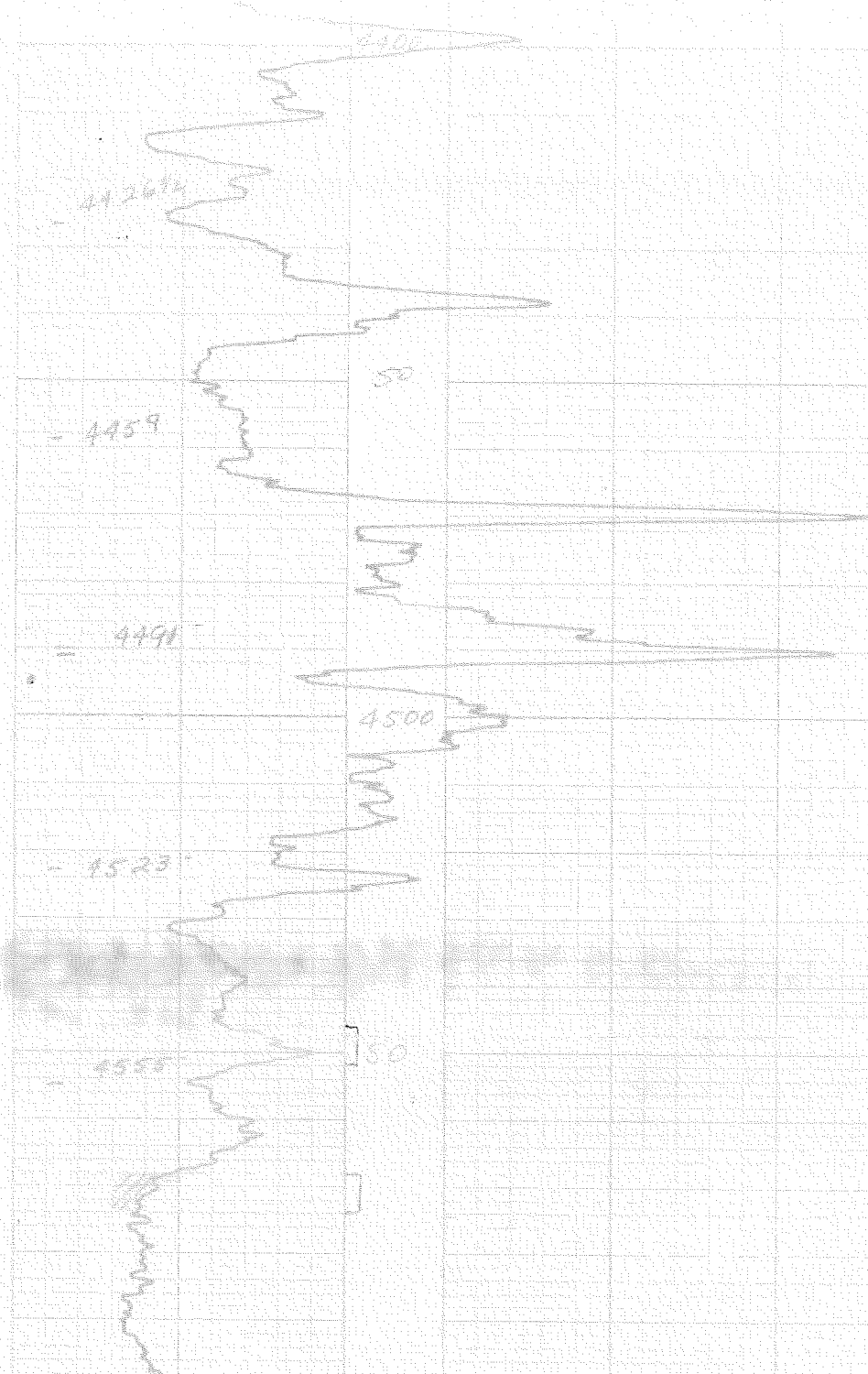
APPENDIX I (FORM 101)  
 REMARKS

**GAMMA RAY**      **NEUTRON**

*J*



44267



TD 4600  
 RD 4599  
 XGIR zero 1" left  
 Sen 9000 cm

$$\begin{array}{r} 1.0108 \\ 5517.60 \\ 4470. \\ \hline 482760 \end{array}$$
  
 4470  
 3.4