



TRILOBITE TESTING, INC.

DRILL STEM TEST REPORT

Grand Mesa Operating Comp.
 1700 North Waterfront PKWY
 BLDG 600
 Wichita KS 67206
 ATTN: John Goldsmith

21-13s-31w Gove KS

CSC #1-21

Job Ticket: 46500

DST#: 3

Test Start: 2012.04.21 @ 09:17:05

GENERAL INFORMATION:

Formation: **Ft. Scott- Verdigris**

Deviated: No Whipstock: ft (KB)

Time Tool Opened: 11:18:00

Time Test Ended: 15:28:44

Test Type: Conventional Bottom Hole (Reset)

Tester: Mike Roberts

Unit No: 48

Interval: **4385.00 ft (KB) To 4456.00 ft (KB) (TVD)**

Total Depth: 4456.00 ft (KB) (TVD)

Hole Diameter: 7.88 inches Hole Condition: Fair

Reference Elevations: 2893.00 ft (KB)

2889.00 ft (CF)

KB to GR/CF: 4.00 ft

Serial #: 8736

Inside

Press @ Run Depth: 45.46 psig @ 4388.00 ft (KB)

Start Date: 2012.04.21

End Date:

2012.04.21

Start Time: 09:17:05

End Time:

15:28:44

Capacity: 8000.00 psig

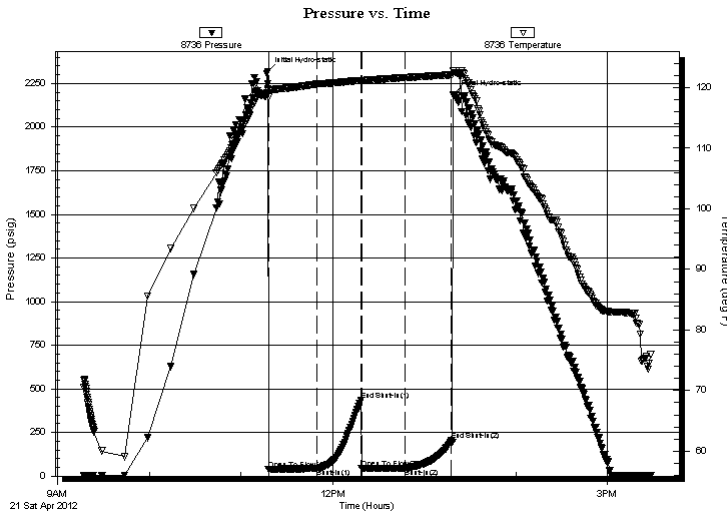
Last Calib.: 2012.04.21

Time On Btm: 2012.04.21 @ 11:17:30

Time Off Btm: 2012.04.21 @ 13:19:15

TEST COMMENT: IF: Built to 1" blow
 IS: No return blow
 FF: No blow
 FS: No return blow

PRESSURE SUMMARY



Time (Min.)	Pressure (psig)	Temp (deg F)	Annotation
0	2320.33	119.69	Initial Hydro-static
1	39.49	118.44	Open To Flow (1)
33	43.00	120.59	Shut-In(1)
61	435.64	121.21	End Shut-In(1)
62	44.03	121.11	Open To Flow (2)
90	45.46	121.66	Shut-In(2)
121	202.95	122.14	End Shut-In(2)
122	2184.20	122.73	Final Hydro-static

Recovery

Length (ft)	Description	Volume (bbl)
10.00	mud 100% mud	0.05

Gas Rates

Choke (inches)	Pressure (psig)	Gas Rate (Mcf/d)

* Recovery from multiple tests



**TRILOBITE
TESTING, INC.**

DRILL STEM TEST REPORT

FLUID SUMMARY

Grand Mesa Operating Comp.
1700 North Waterfront PKWY
BLDG 600
Wichita KS 67206
ATTN: John Goldsmith

21-13s-31w Gove KS
CSC #1-21
Job Ticket: 46500 **DST#: 3**
Test Start: 2012.04.21 @ 09:17:05

Mud and Cushion Information

Mud Type: Gel Chem	Cushion Type:	Oil API:	0 deg API
Mud Weight: 9.00 lb/gal	Cushion Length: ft	Water Salinity:	0 ppm
Viscosity: 74.00 sec/qt	Cushion Volume: bbl		
Water Loss: 6.80 in ³	Gas Cushion Type:		
Resistivity: 0.00 ohm.m	Gas Cushion Pressure: psig		
Salinity: 2800.00 ppm			
Filter Cake: 1.00 inches			

Recovery Information

Recovery Table

Length ft	Description	Volume bbl
10.00	mud 100% mud	0.049

Total Length: 10.00 ft Total Volume: 0.049 bbl
 Num Fluid Samples: 0 Num Gas Bombs: 0 Serial #:
 Laboratory Name: Laboratory Location:
 Recovery Comments:

