



DIGITAL LOG (785) 625-3858

Radiation Guard Log

15-065-23,829-00-00

API No.

Company **Venture Resources, Inc.**

Well **L-W Unit No. 1**

Field

County **Graham** State **Kansas**

Location

**NW SE SW NE
2,644' FSL & 1,815' FEL**

Other Services
None

Sec: **25** Twp: **6S** Rge: **22W**

Permanent Datum **Ground Level** Elevation **2269**
Log Measured From **Kelly Bushing** 5 Ft. Above Perm. Datum
Drilling Measured From **Kelly Bushing**

Elevation
K.B. 2274
D.F. 2269
G.L. 2269

Date	5/6/2012	
Run Number	One	
Depth Driller	3750	
Depth Logger	3749	
Bottom Logged Interval	3748	
Top Log Interval	200	
Casing Driller	8.625 @ 236	
Casing Logger	232	
Bit Size	7.875	
Type Fluid in Hole	Chemical	
Salinity,ppm CL	1200	
Density / Viscosity	9.2 56	
pH / Fluid Loss	10.0 7.2	
Source of Sample	Flowline	
Rm @ Meas. Temp	1.08 @ 76	
Rmf @ Meas. Temp	.81 @ 76	
Rmc @ Meas. Temp	1.46 @ 76	
Source of Rmf / Rmc	Charts	
Rm @ BHT	.72 @ 114	
Operating Rig Time	2 Hours	
Max Rec. Temp. F	114	
Equipment Number	10	
Location	Hays	
Recorded By	J. Long	
Witnessed By	Greg Mackey	

<<< Fold Here >>>

All interpretations are opinions based on inferences from electrical or other measurements and we cannot and do not guarantee the accuracy or correctness of any interpretation, and we shall not, except in the case of gross or willful negligence on our part, be liable or responsible for any loss, costs, damages, or expenses incurred or sustained by anyone resulting from any interpretation made by any of our officers, agents or employees. These interpretations are also subject to our general terms and conditions set out in our current Price Schedule.

Comments

Thank you for using Log-Tech, Inc.
(785) 625-3858

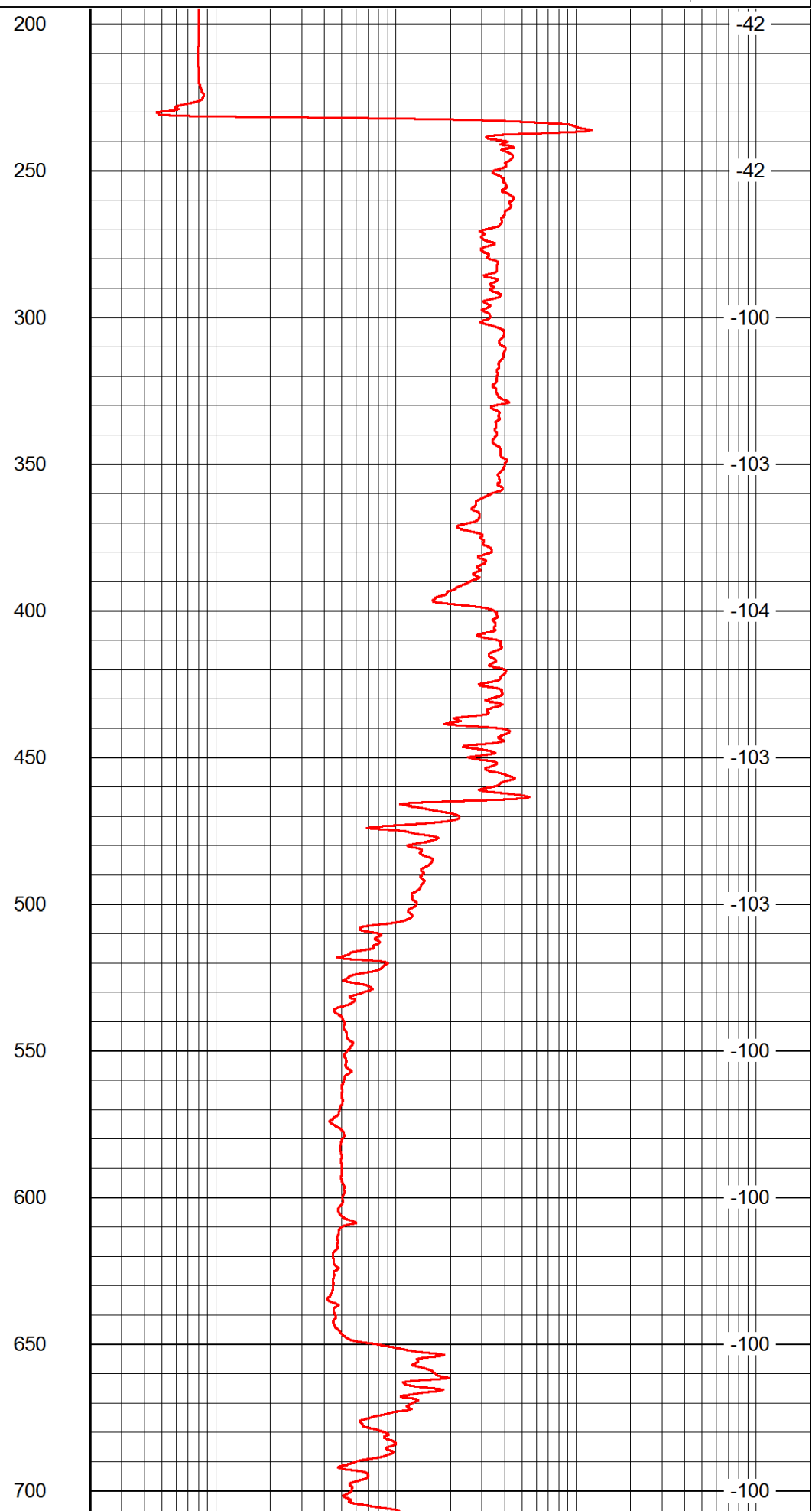
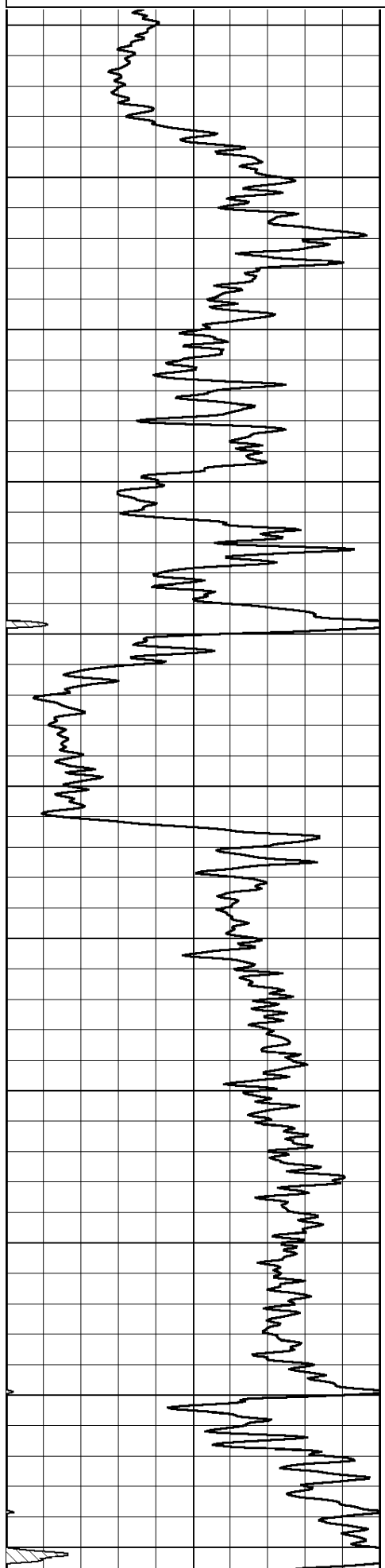
Bogue, North to Intersection of Highway 18 and Highway 24, 1 1/2 West to 340th Avenue, 8 1/2 North, West and North Into

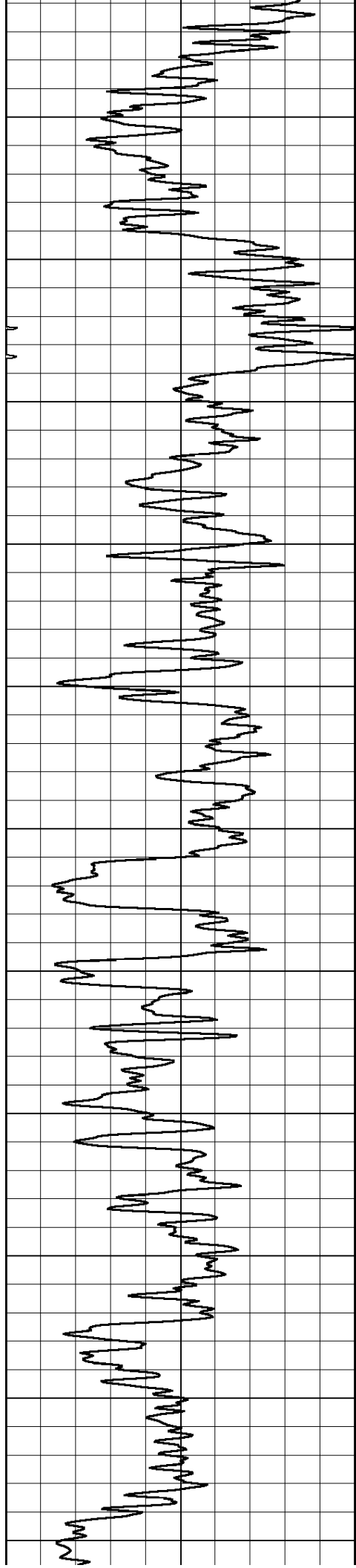
Database File: c:\warrior\data\venture_l-w unit no. 1\venture_lw_unit_1hd.db
 Dataset Pathname: rag/ventrag
 Presentation Format: rag2in
 Dataset Creation: Sun May 06 23:28:24 2012
 Charted by: Depth in Feet scaled 1:600

0 Gamma Ray 150

0.2 lgrd 2000

LSPD





750

800

850

900

950

1000

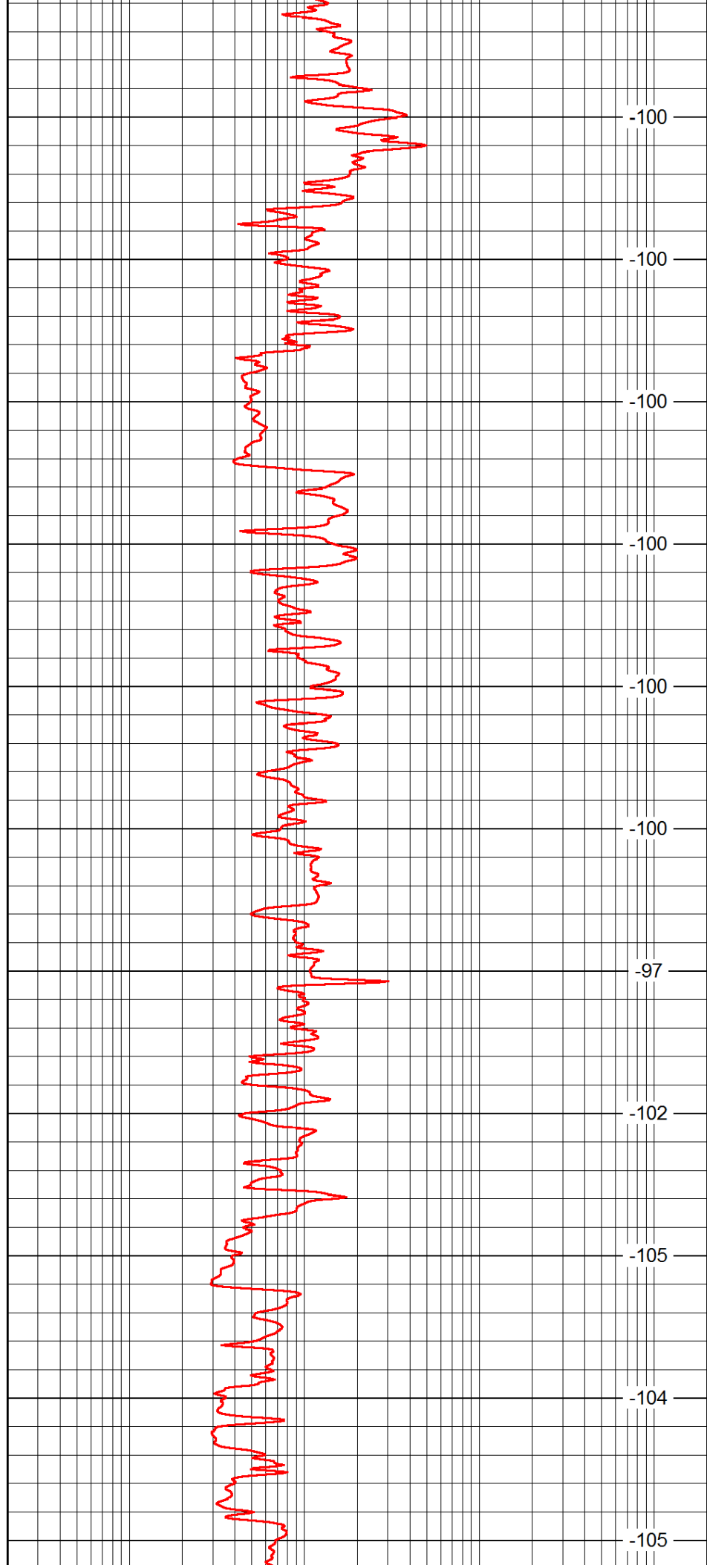
1050

1100

1150

1200

1250



-100

-100

-100

-100

-100

-100

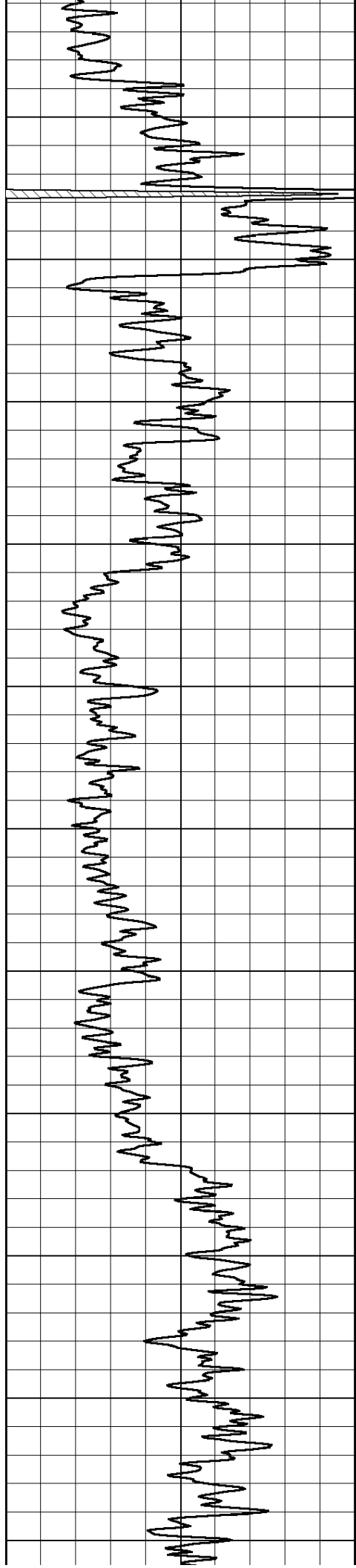
-97

-102

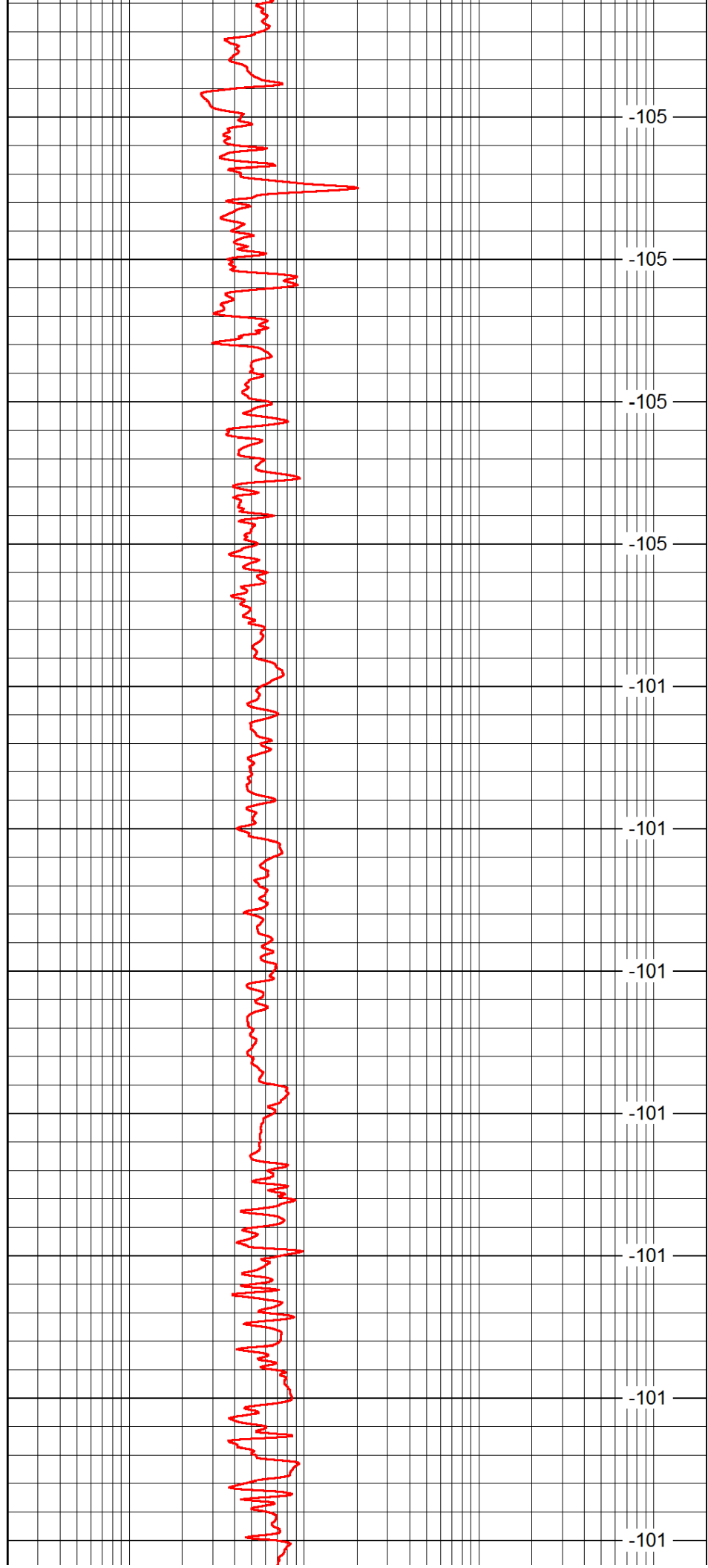
-105

-104

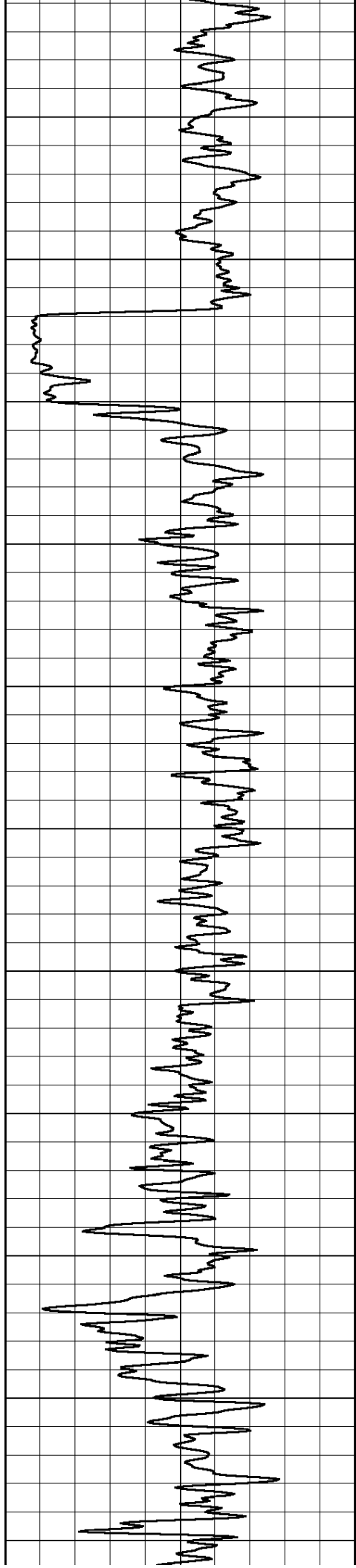
-105



1300
1350
1400
1450
1500
1550
1600
1650
1700
1750
1800



-105
-105
-105
-105
-101
-101
-101
-101
-101
-101



1850

1900

1950

2000

2050

2100

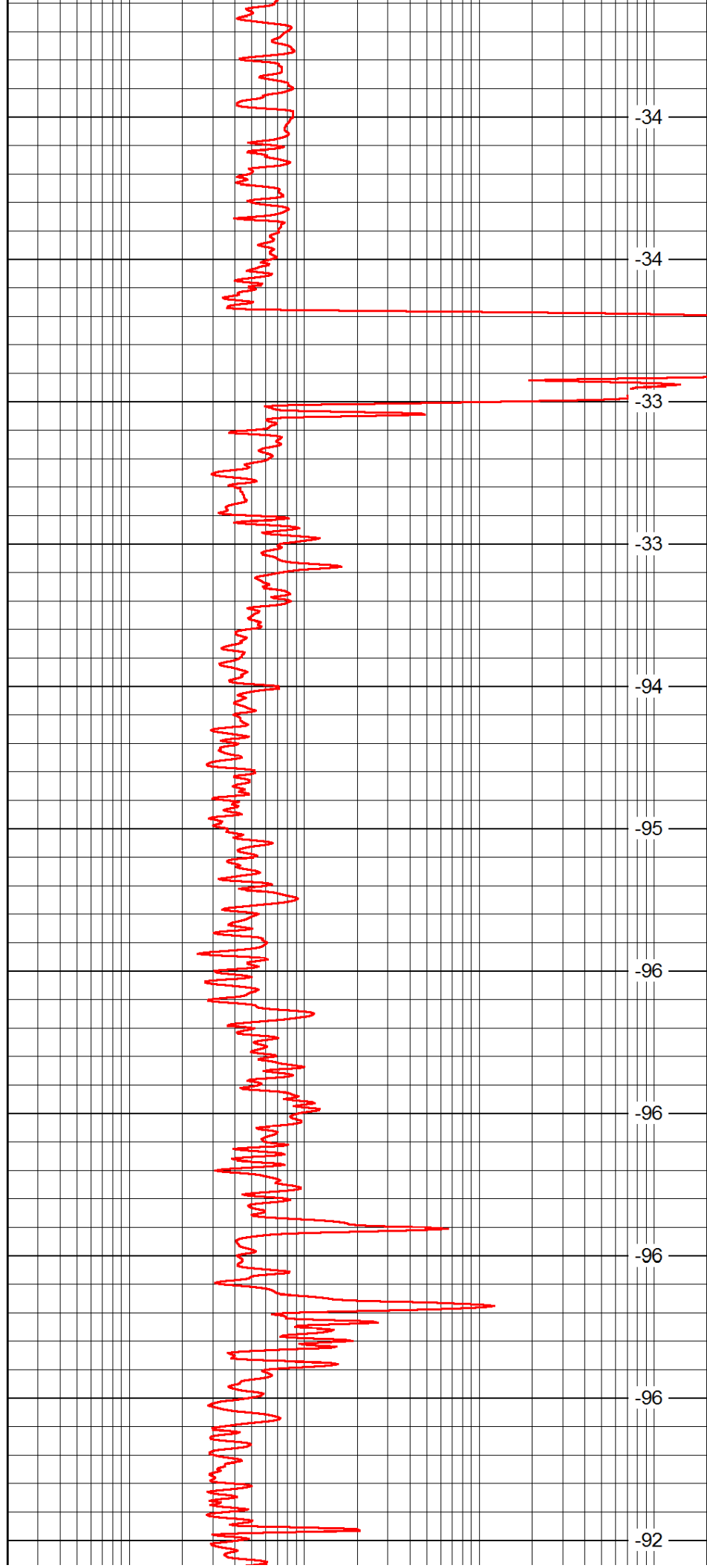
2150

2200

2250

2300

2350



-34

-34

-33

-33

-94

-95

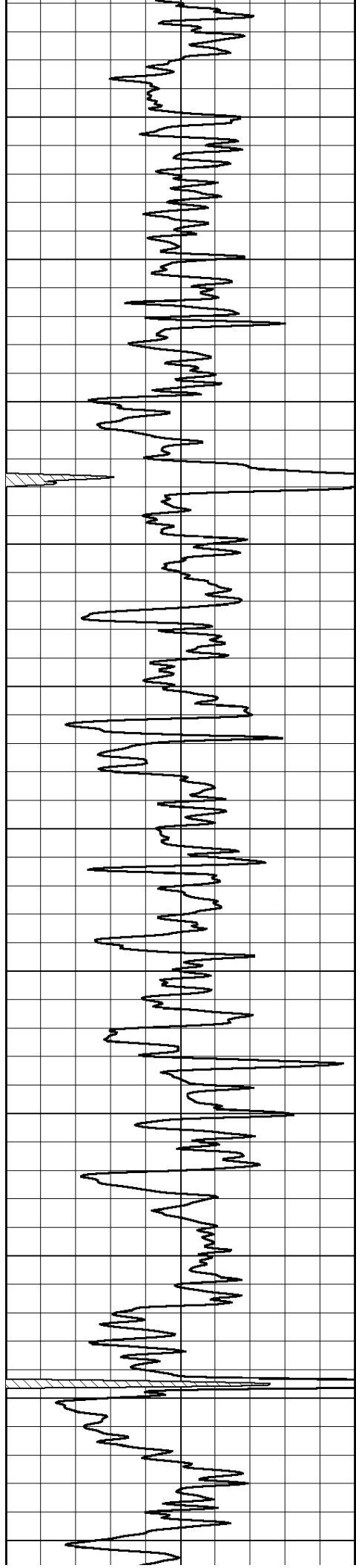
-96

-96

-96

-96

-92



2400

2450

2500

2550

2600

2650

2700

2750

2800

2850

2900

-86

-76

-76

-76

-76

-76

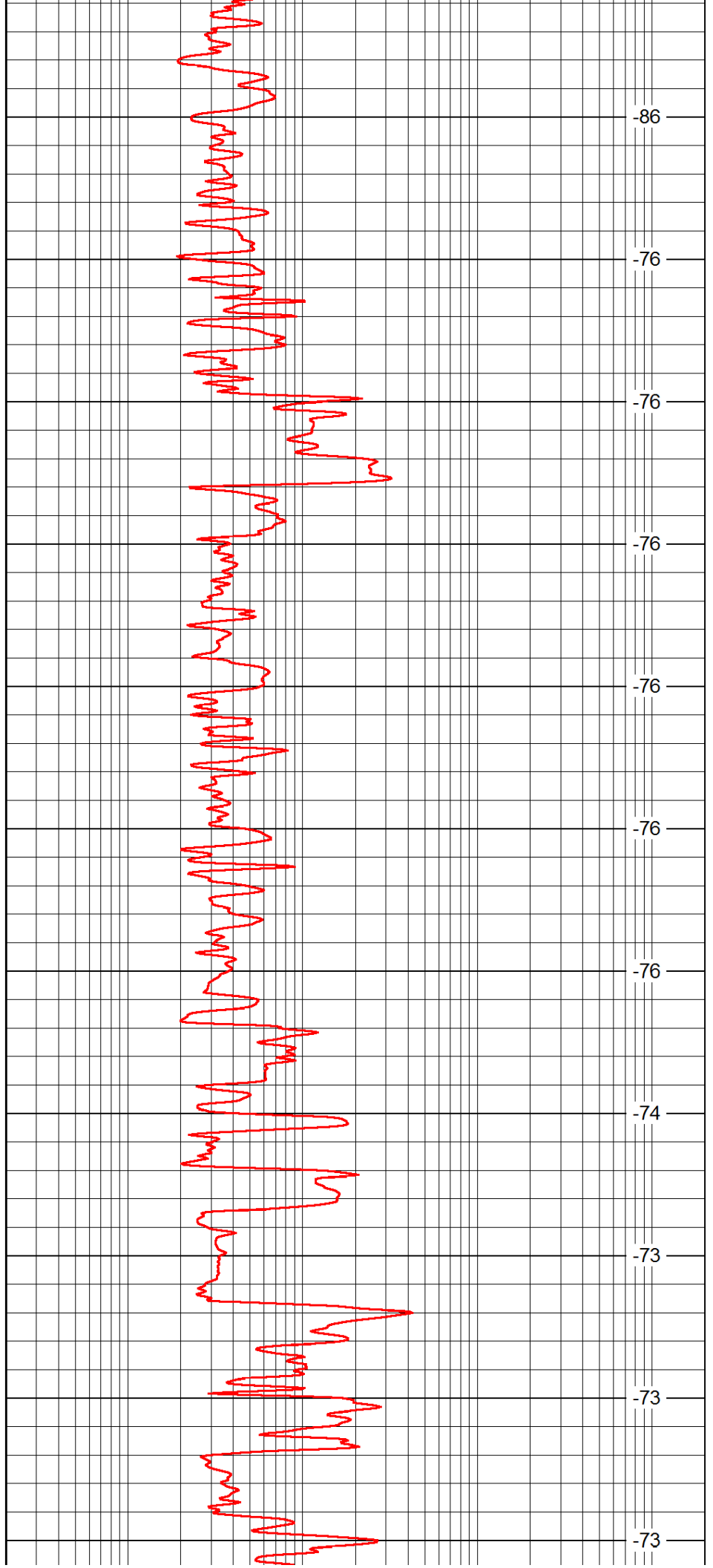
-76

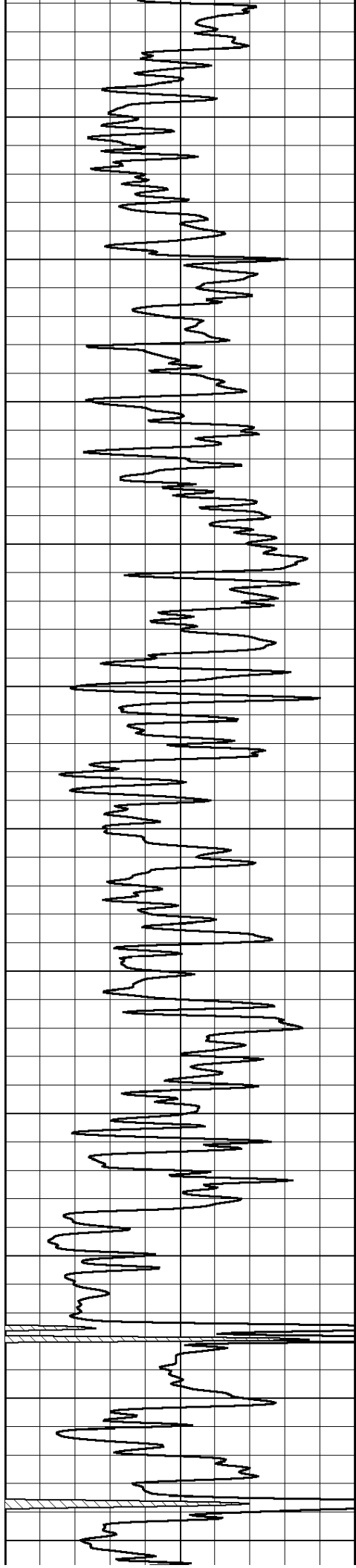
-74

-73

-73

-73





2950

3000

3050

3100

3150

3200

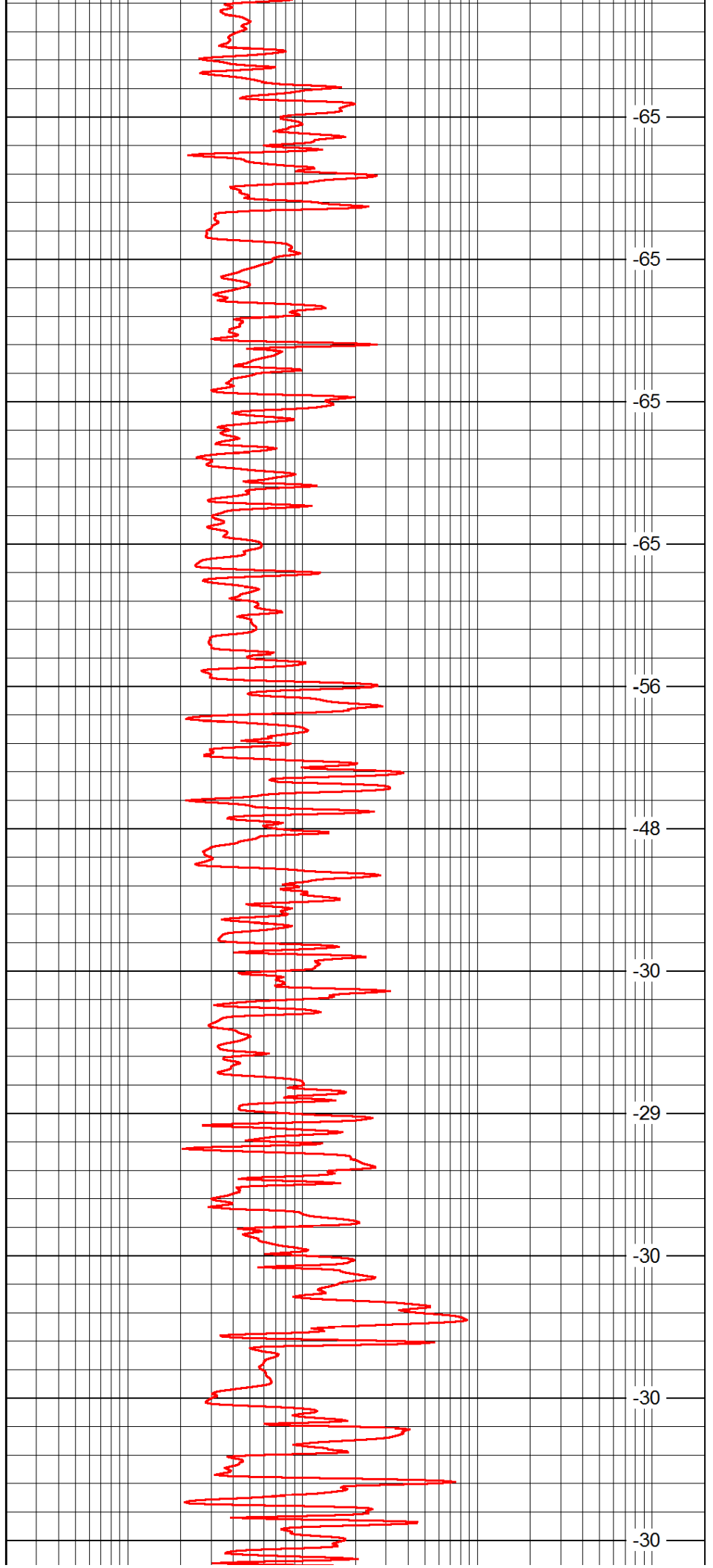
3250

3300

3350

3400

3450



-65

-65

-65

-65

-56

-48

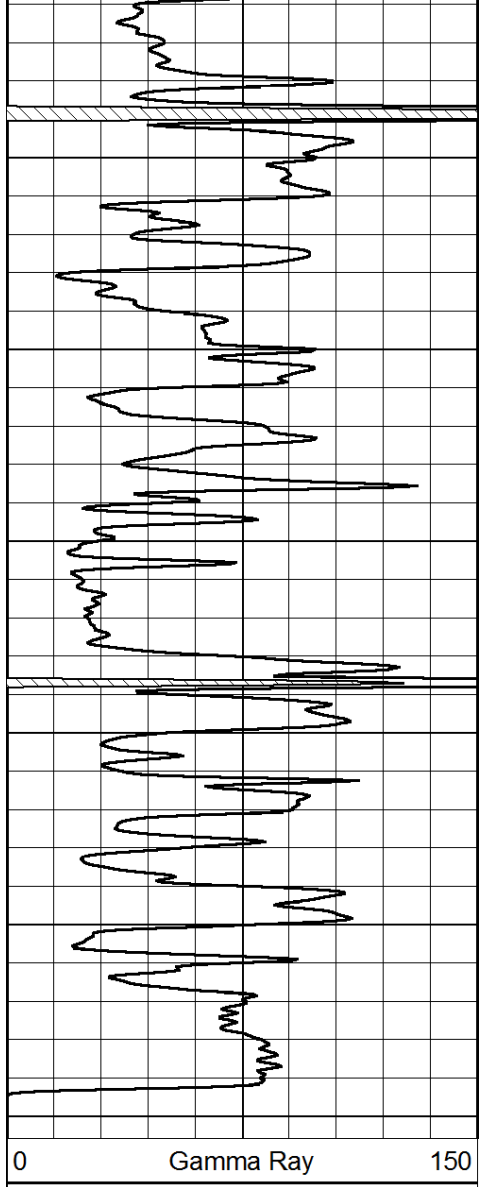
-30

-29

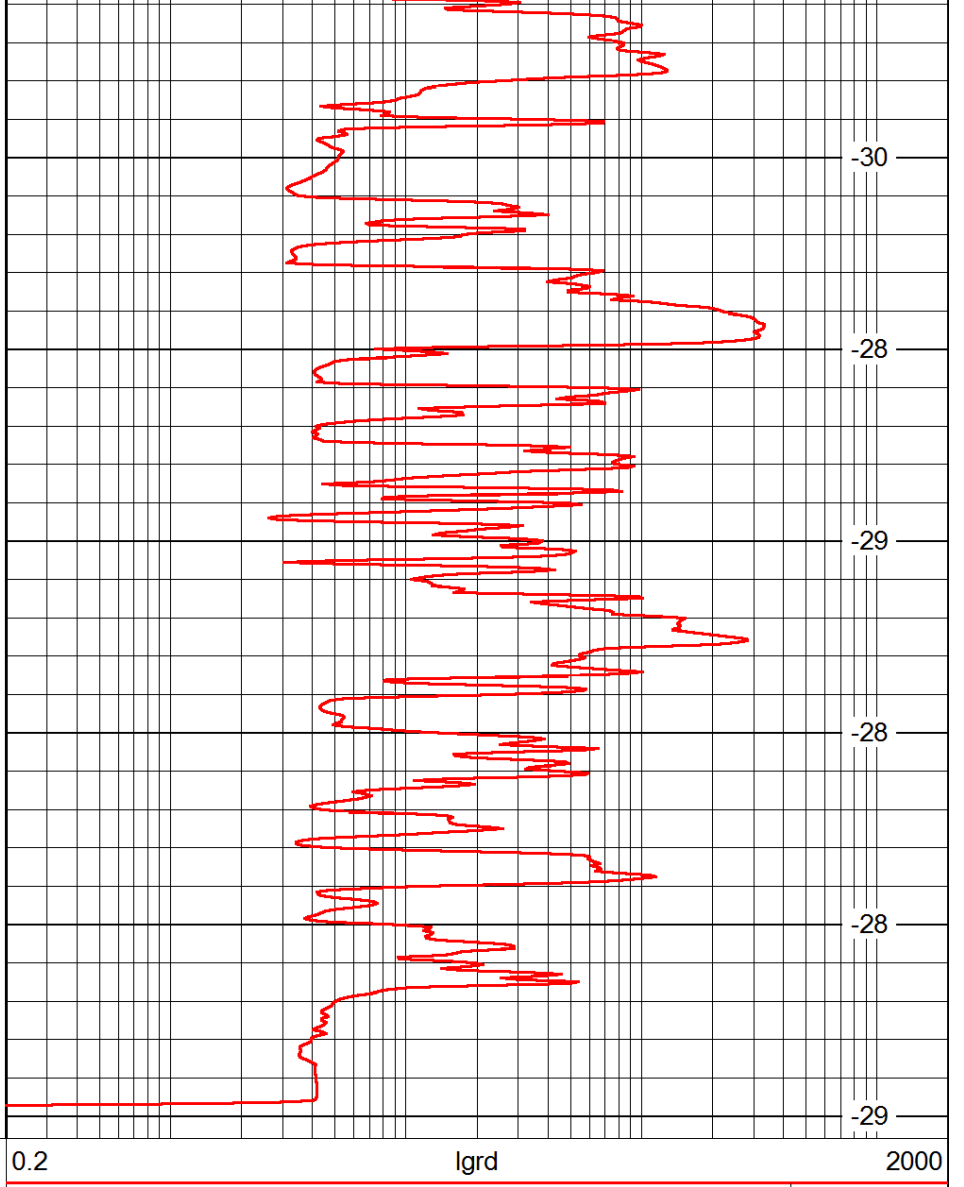
-30

-30

-30



3500
3550
3600
3650
3700
3750



-30
-28
-29
-28
-28
-29

0 Gamma Ray 150

0.2 lgrd 2000

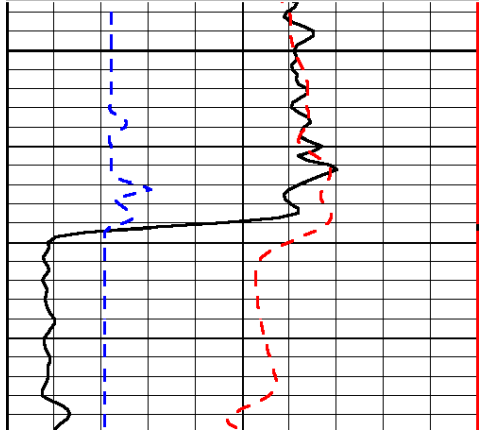
LSPD

Database File: c:\warrior\data\venture_l-w unit no. 1\venture_lw_unit_1hd.db
 Dataset Pathname: rag/ventrag
 Presentation Format: rag
 Dataset Creation: Sun May 06 23:28:24 2012
 Charted by: Depth in Feet scaled 1:240

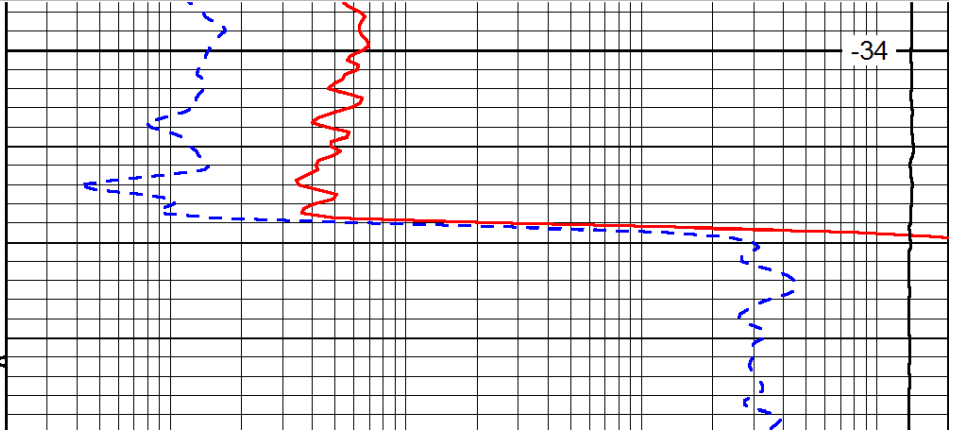
0	Gamma Ray	150
6	Caliper (GAPI)	16
-200	SP (mV)	0

0.2	Long Guard	2000
560	Neuton	2160
15000	Line Tension	0

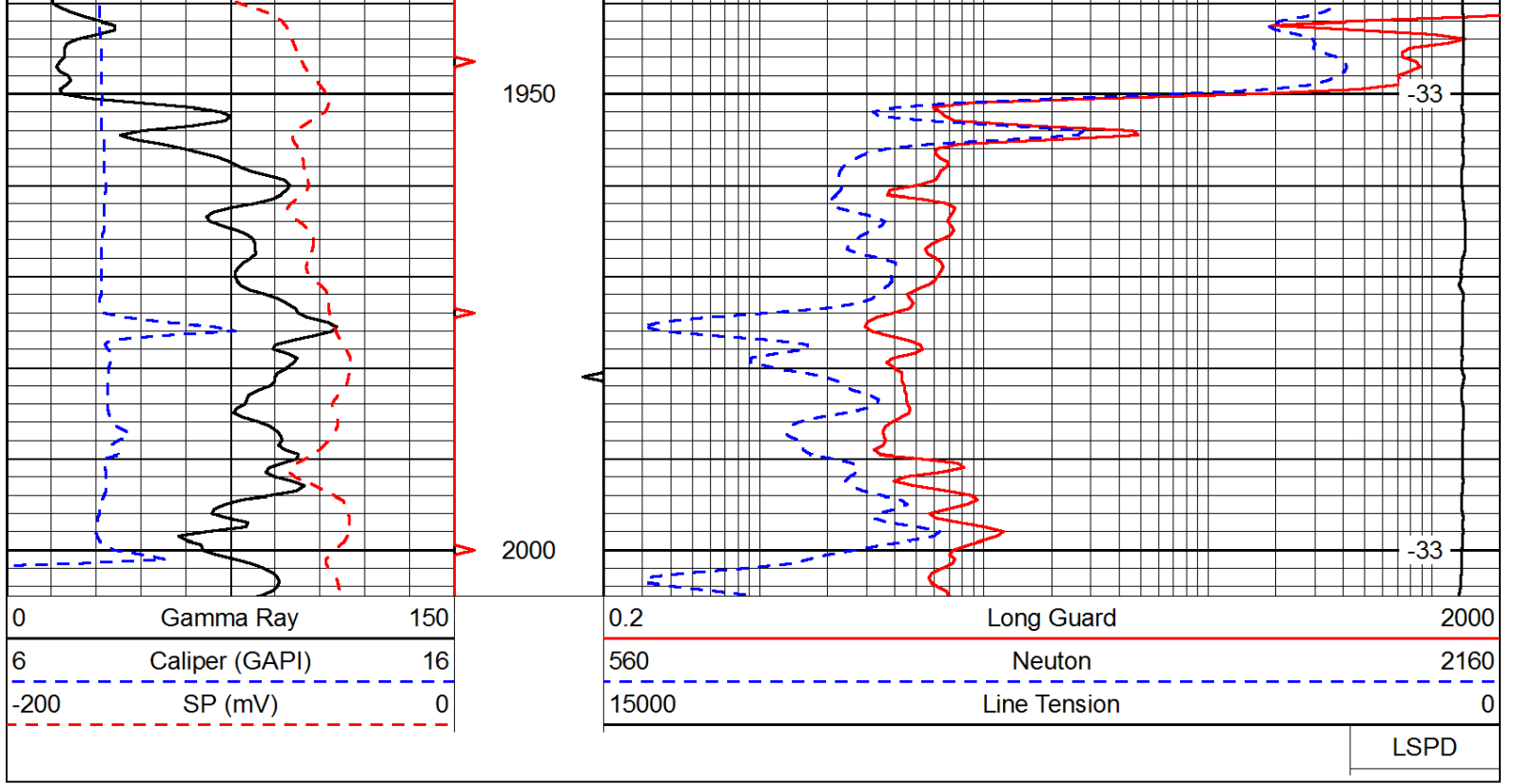
LSPD



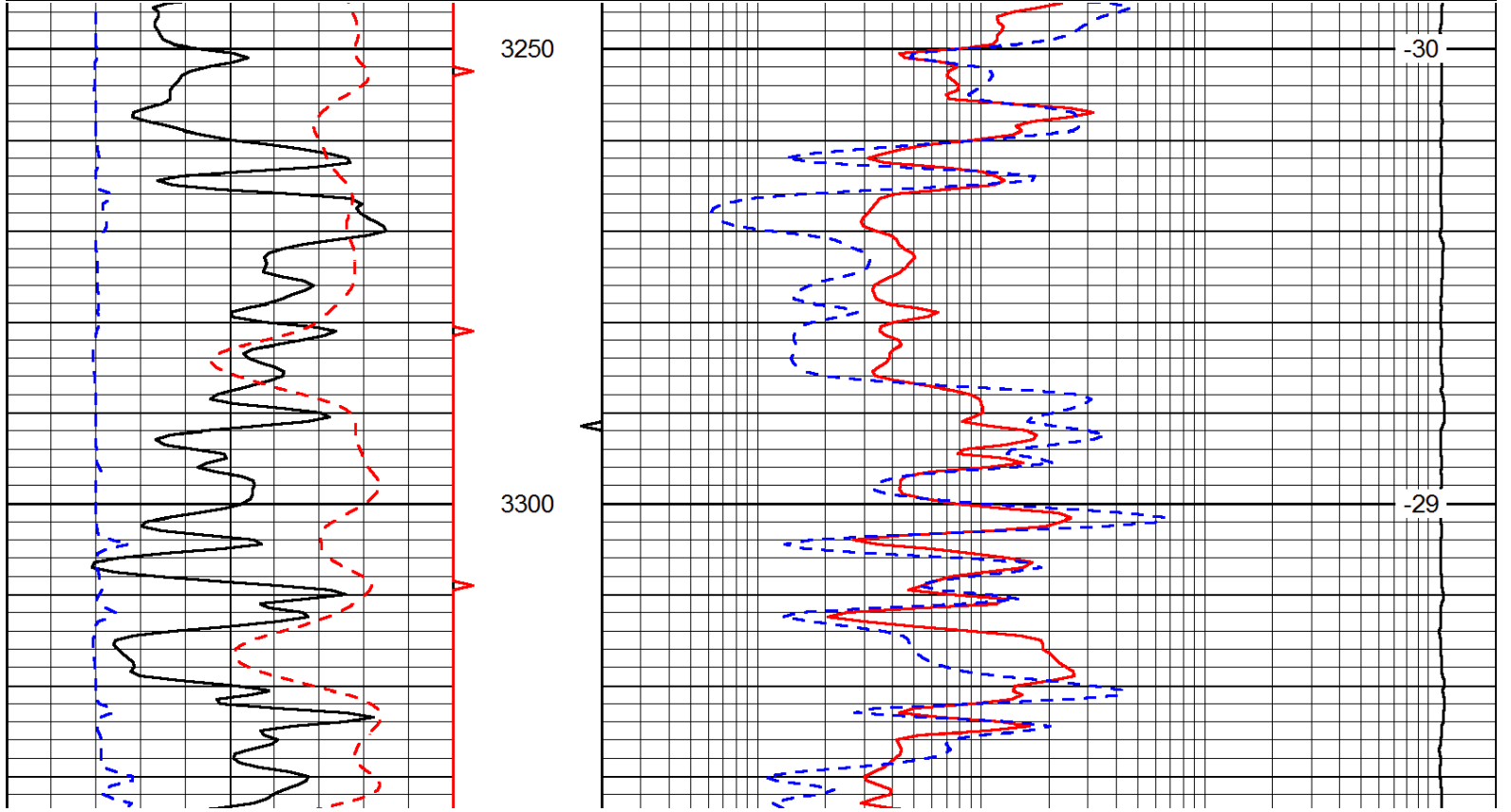
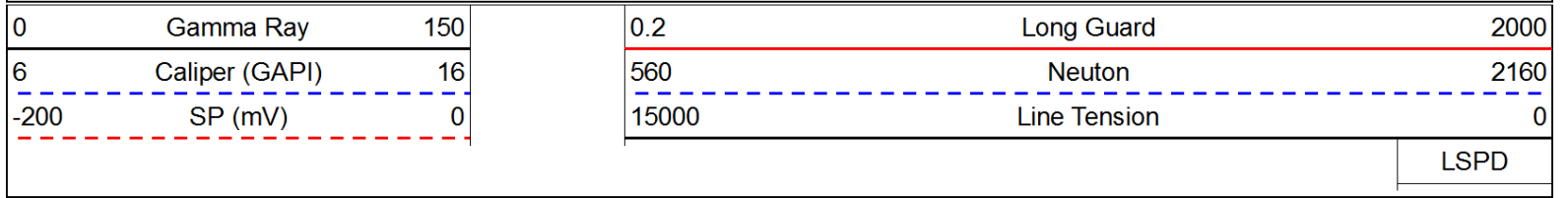
1900

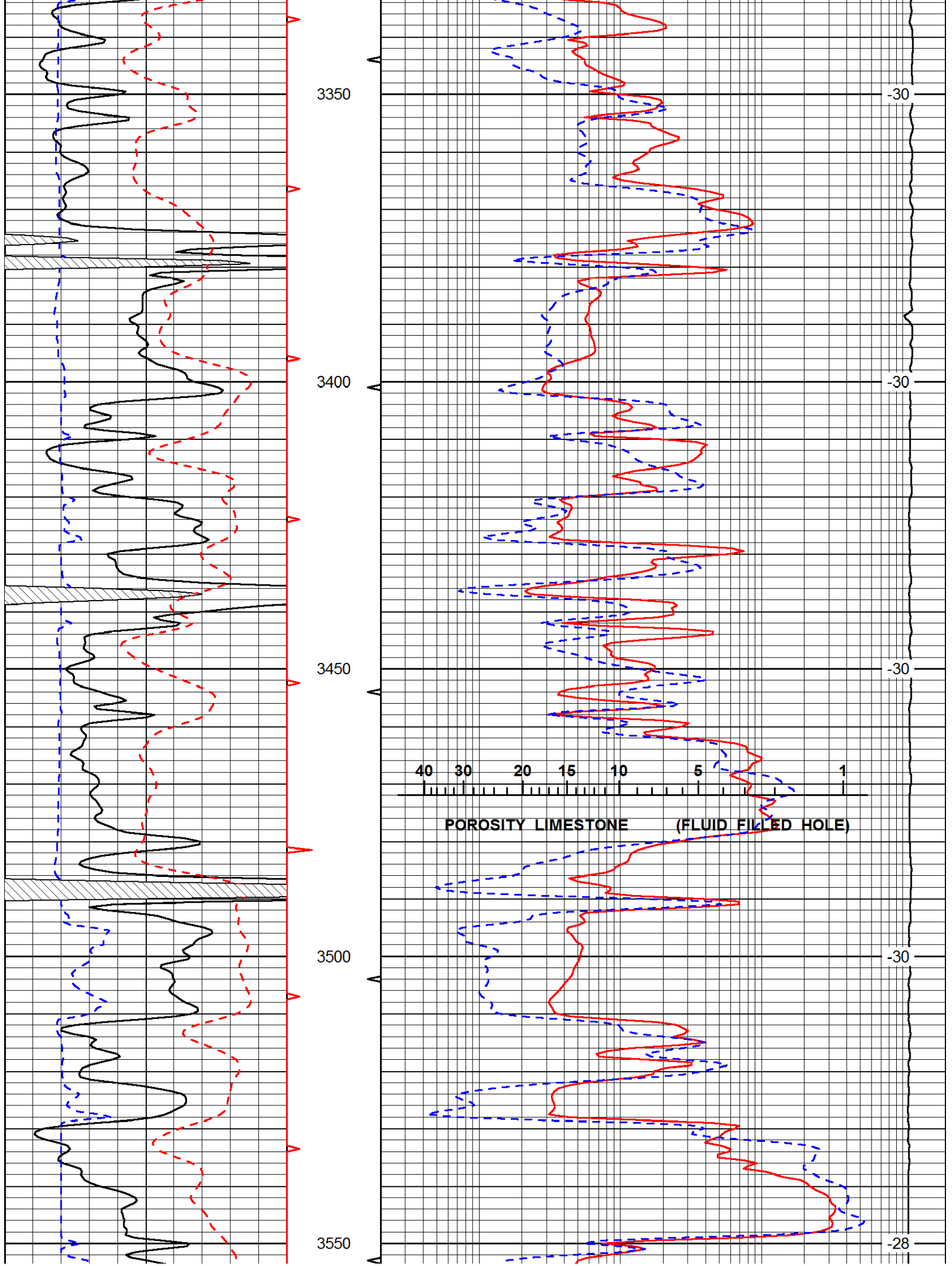


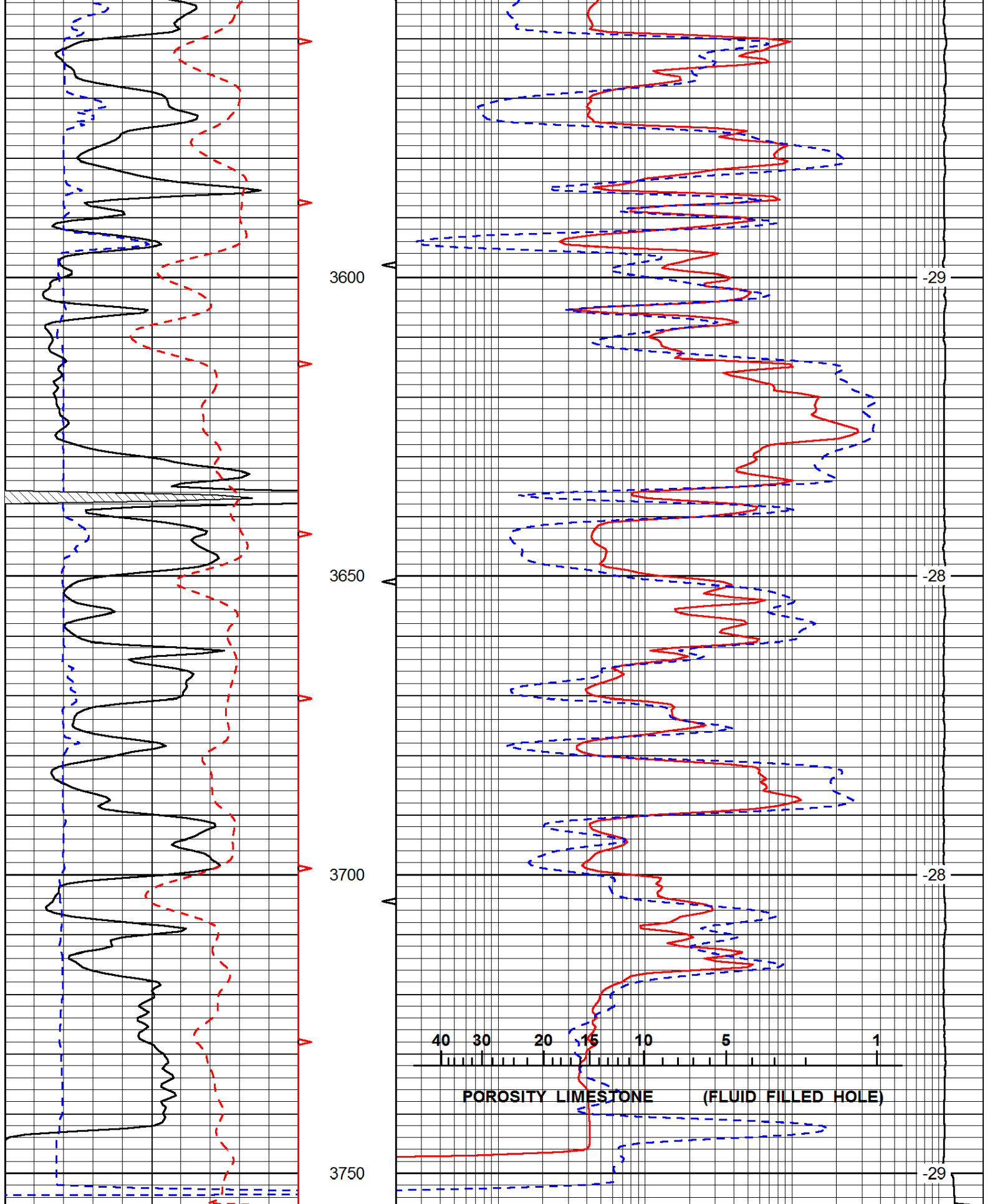
-34



Database File: c:\warrior\data\venture_l-w unit no. 1\venture_lw_unit_1hd.db
 Dataset Pathname: rag/ventrag
 Presentation Format: rag
 Dataset Creation: Sun May 06 23:28:24 2012
 Charted by: Depth in Feet scaled 1:240







0	Gamma Ray	150
6	Caliper (GAPI)	16
-200	SP (mV)	0

0.2	Long Guard	2000
560	Neutron	2160
15000	Line Tension	0

