



DRILL STEM TEST REPORT

Prepared For: **Venture Resources**

2255 S. Wadsworth Ste 205 Lakewood CO
80227

ATTN: Greg Mackey

L-W Unit #1

25-6s-22w Graham,KS

Start Date: 2012.05.04 @ 00:15:00

End Date: 2012.05.04 @ 06:16:30

Job Ticket #: 46065 DST #: 1

Trilobite Testing, Inc
PO Box 362 Hays, KS 67601
ph: 785-625-4778 fax: 785-625-5620

Printed: 2012.05.09 @ 13:40:24



TRILOBITE TESTING, INC.

DRILL STEM TEST REPORT

Venture Resources

25-6s-22w Graham,KS

2255 S. Wadsworth Ste 205 Lakewood CO 80227

L-W Unit #1

ATTN: Greg Mackey

Job Ticket: 46065

DST#: 1

Test Start: 2012.05.04 @ 00:15:00

GENERAL INFORMATION:

Formation: **Toronto**

Deviated: No Whipstock: ft (KB)

Time Tool Opened: 02:19:30

Time Test Ended: 06:16:30

Test Type: Conventional Bottom Hole (Initial)

Tester: Chuck Kreuzer Jr.

Unit No: 61

Interval: 3500.00 ft (KB) To 3530.00 ft (KB) (TVD)

Reference Elevations: 2276.00 ft (KB)

Total Depth: 3530.00 ft (KB) (TVD)

2271.00 ft (CF)

Hole Diameter: 7.88 inches Hole Condition: Good

KB to GR/CF: 5.00 ft

Serial #: 8791 Inside

Press @ Run Depth: 31.22 psig @ 3501.00 ft (KB)

Capacity: 8000.00 psig

Start Date: 2012.05.04

End Date:

2012.05.04

Last Calib.: 2012.05.04

Start Time: 00:15:05

End Time:

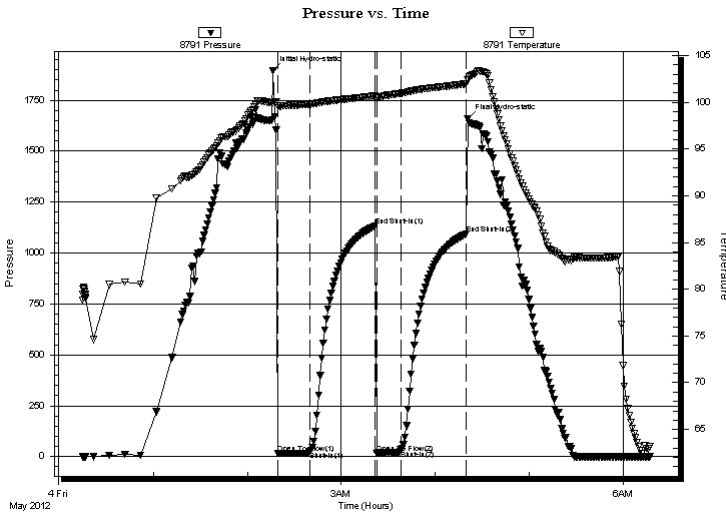
06:16:29

Time On Btm: 2012.05.04 @ 02:16:30

Time Off Btm: 2012.05.04 @ 04:20:30

TEST COMMENT: IF: Weak blow, Died in 1 min.
 IS: No blow back over 45 mins.
 FF: No blow over 15 mins.
 FS: No blow back over 45 mins.

PRESSURE SUMMARY



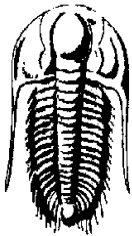
Time (Min.)	Pressure (psig)	Temp (deg F)	Annotation
0	1896.86	99.95	Initial Hydro-static
3	16.17	99.63	Open To Flow (1)
24	24.79	99.80	Shut-In(1)
65	1132.47	100.70	End Shut-In(1)
66	18.11	100.45	Open To Flow (2)
82	31.22	100.97	Shut-In(2)
123	1093.88	101.97	End Shut-In(2)
124	1658.58	102.38	Final Hydro-static

Recovery

Length (ft)	Description	Volume (bbl)
5.00	mud with oil specs	0.07

Gas Rates

Choke (inches)	Pressure (psig)	Gas Rate (Mcf/d)



**TRILOBITE
TESTING, INC.**

DRILL STEM TEST REPORT

Venture Resources

25-6s-22w Graham,KS

2255 S. Wadsworth Ste 205 Lakewood CO 80227

L-W Unit #1

ATTN: Greg Mackey

Job Ticket: 46065

DST#: 1

Test Start: 2012.05.04 @ 00:15:00

GENERAL INFORMATION:

Formation: **Toronto**

Deviated: No Whipstock: ft (KB)

Time Tool Opened: 02:19:30

Time Test Ended: 06:16:30

Test Type: Conventional Bottom Hole (Initial)

Tester: Chuck Kreuzer Jr.

Unit No: 61

Interval: **3500.00 ft (KB) To 3530.00 ft (KB) (TVD)**

Reference Elevations: 2276.00 ft (KB)

Total Depth: 3530.00 ft (KB) (TVD)

2271.00 ft (CF)

Hole Diameter: 7.88 inches Hole Condition: Good

KB to GR/CF: 5.00 ft

Serial #: 8673 Outside

Press@RunDepth: psig @ 3501.00 ft (KB)

Capacity: 8000.00 psig

Start Date: 2012.05.04

End Date:

2012.05.04

Last Calib.:

2012.05.04

Start Time: 00:15:05

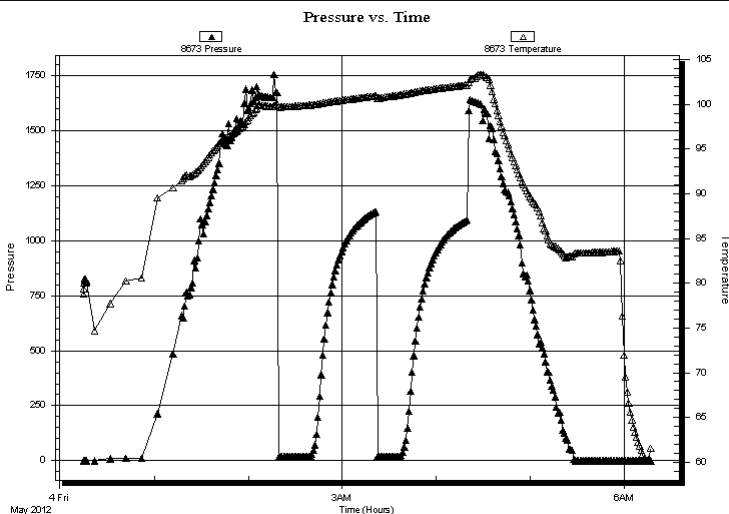
End Time:

06:16:29

Time On Btm:

Time Off Btm:

TEST COMMENT: IF: Weak blow, Died in 1 min.
IS: No blow back over 45 mins.
FF: No blow over 15 mins.
FS: No blow back over 45 mins.



PRESSURE SUMMARY

Time (Min.)	Pressure (psig)	Temp (deg F)	Annotation

Recovery

Length (ft)	Description	Volume (bbl)
5.00	mud with oil specs	0.07

Gas Rates

Choke (inches)	Pressure (psig)	Gas Rate (Mcf/d)



**TRILOBITE
TESTING, INC.**

DRILL STEM TEST REPORT

TOOL DIAGRAM

Venture Resources

25-6s-22w Graham,KS

2255 S. Wadsworth Ste 205 Lakewood CO 80227

L-W Unit #1

Job Ticket: 46065

DST#: 1

ATTN: Greg Mackey

Test Start: 2012.05.04 @ 00:15:00

Tool Information

Drill Pipe:	Length: 3492.00 ft	Diameter: 3.80 inches	Volume: 48.98 bbl	Tool Weight: 2200.00 lb
Heavy Wt. Pipe:	Length: 0.00 ft	Diameter: 0.00 inches	Volume: 0.00 bbl	Weight set on Packer: 25000.00 lb
Drill Collar:	Length: 0.00 ft	Diameter: 0.00 inches	Volume: 0.00 bbl	Weight to Pull Loose: 46000.00 lb
			<u>Total Volume: 48.98 bbl</u>	Tool Chased 2.00 ft
Drill Pipe Above KB:	22.00 ft			String Weight: Initial 44000.00 lb
Depth to Top Packer:	3500.00 ft			Final 44000.00 lb
Depth to Bottom Packer:	ft			
Interval between Packers:	30.00 ft			
Tool Length:	60.00 ft			
Number of Packers:	2	Diameter: 6.75 inches		

Tool Comments:

Tool Description	Length (ft)	Serial No.	Position	Depth (ft)	Accum. Lengths
------------------	-------------	------------	----------	------------	----------------

Shut In Tool	5.00			3475.00	
Sampler	2.00			3477.00	
Hydraulic tool	5.00			3482.00	
Jars	5.00			3487.00	
Safety Joint	3.00			3490.00	
Packer	5.00			3495.00	30.00 Bottom Of Top Packer
Packer	5.00			3500.00	
Stubb	1.00			3501.00	
Recorder	0.00	8791	Inside	3501.00	
Recorder	0.00	8673	Outside	3501.00	
Perforations	26.00			3527.00	
Bullnose	3.00			3530.00	30.00 Bottom Packers & Anchor

Total Tool Length: 60.00



**TRILOBITE
TESTING, INC.**

DRILL STEM TEST REPORT

FLUID SUMMARY

Venture Resources **25-6s-22w Graham,KS**
 2255 S. Wadsworth Ste 205 Lakewood CO 80227 **L-W Unit #1**
 Job Ticket: 46065 **DST#: 1**
 ATTN: Greg Mackey Test Start: 2012.05.04 @ 00:15:00

Mud and Cushion Information

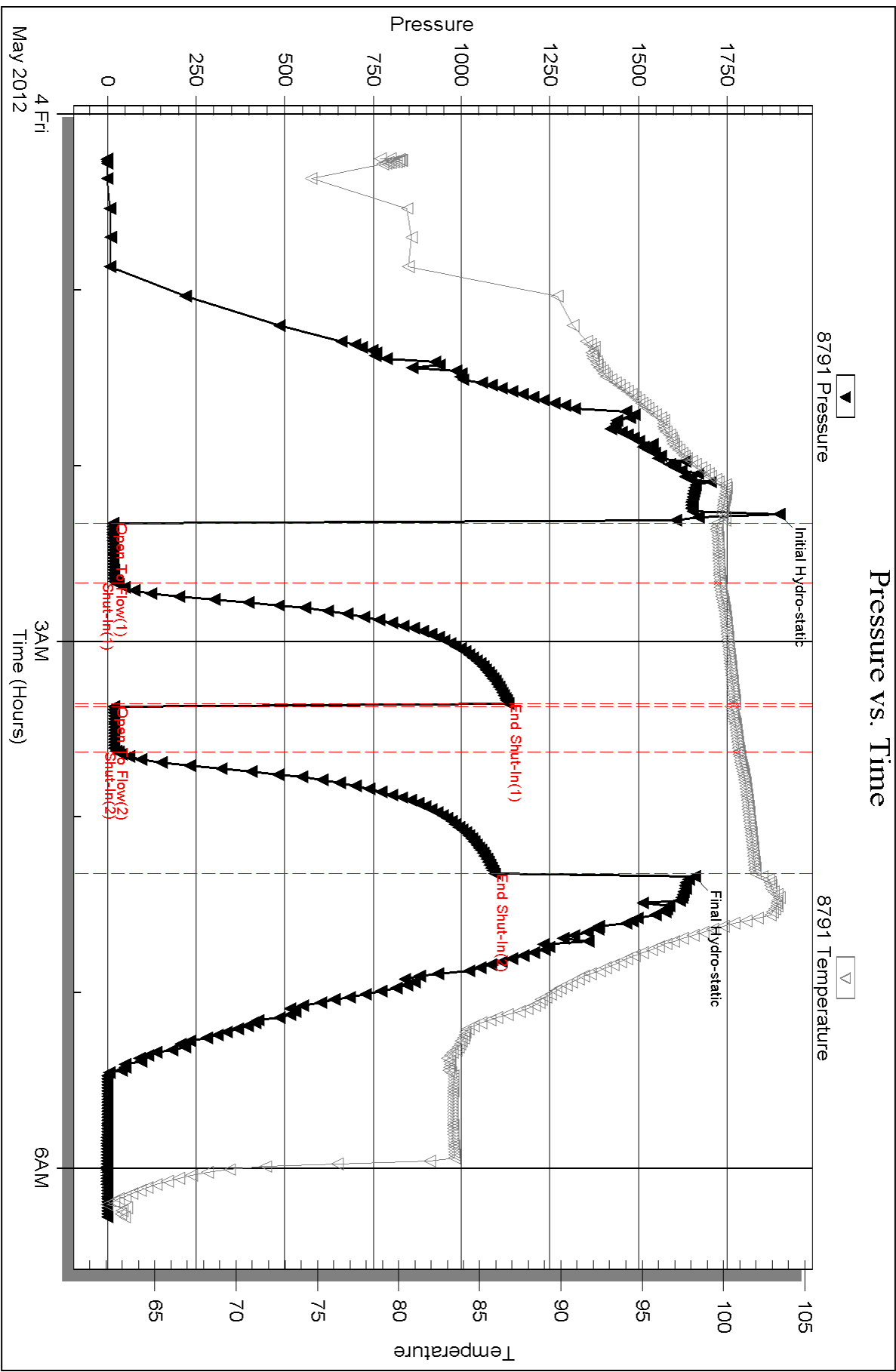
Mud Type: Gel Chem	Cushion Type:	Oil API:	deg API
Mud Weight: 9.00 lb/gal	Cushion Length: ft	Water Salinity:	ppm
Viscosity: 58.00 sec/qt	Cushion Volume: bbl		
Water Loss: 5.39 in ³	Gas Cushion Type:		
Resistivity: ohm.m	Gas Cushion Pressure: psig		
Salinity: 700.00 ppm			
Filter Cake: 2.00 inches			

Recovery Information

Recovery Table

Length ft	Description	Volume bbl
5.00	mud with oil specs	0.070

Total Length: 5.00 ft Total Volume: 0.070 bbl
 Num Fluid Samples: 0 Num Gas Bombs: 0 Serial #:
 Laboratory Name: Laboratory Location:
 Recovery Comments: sampler- 175 psi. 2000ml. mud

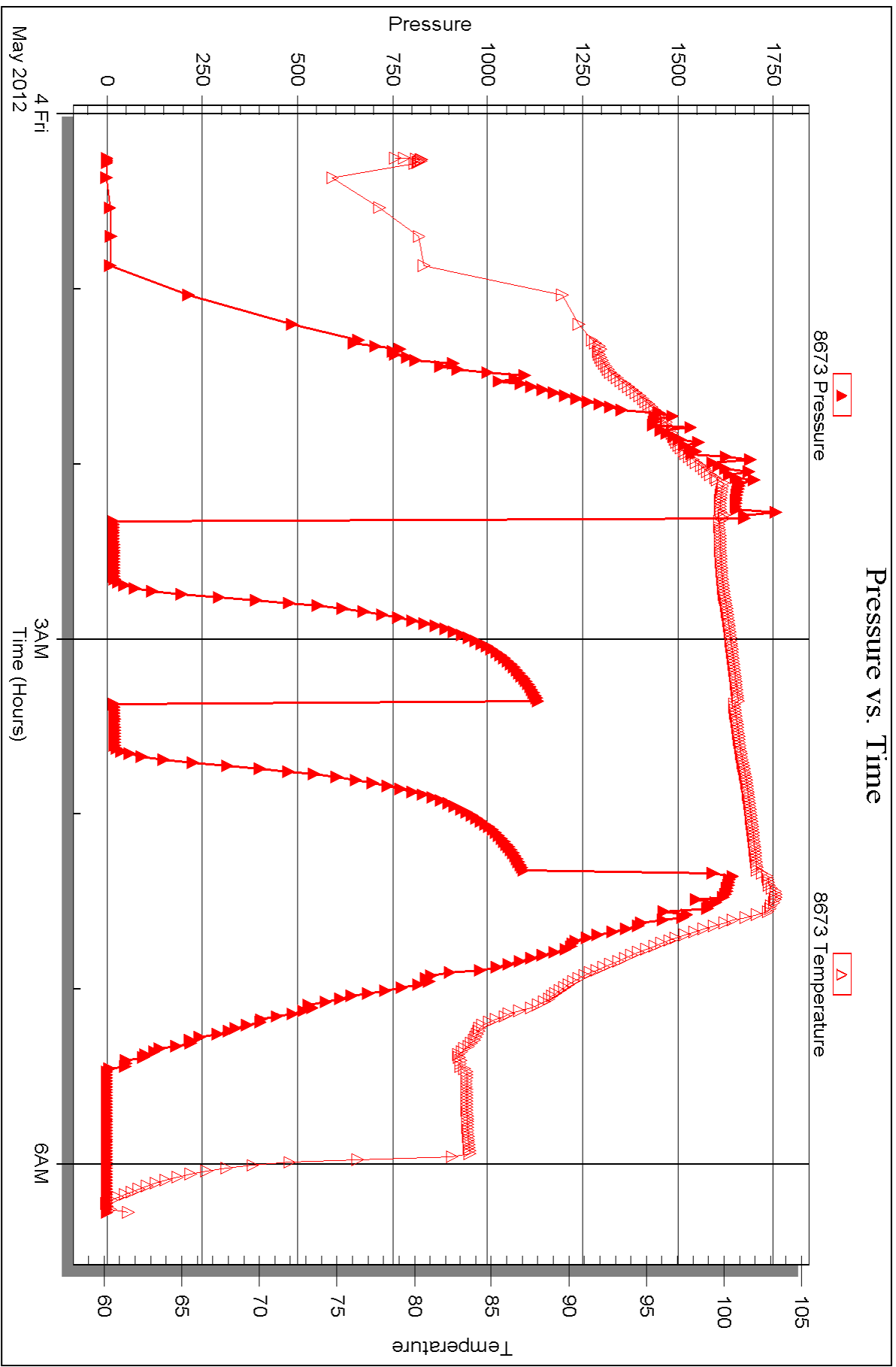


Serial #: 8673

Outside Venture Resources

L-W Unit #1

DST Test Number: 1



Triobite Testing, Inc

Ref. No: 46065

Printed: 2012.05.09 @ 13:40:27



DRILL STEM TEST REPORT

Prepared For: **Venture Resources**

2255 S. Wadsworth Ste 205 Lakewood CO
80227

ATTN: Greg Mackey

L-W Unit #1

25-6s-22w Graham,KS

Start Date: 2012.05.04 @ 16:45:00

End Date: 2012.05.04 @ 23:03:00

Job Ticket #: 46066 DST #: 2

Trilobite Testing, Inc
PO Box 362 Hays, KS 67601
ph: 785-625-4778 fax: 785-625-5620

Printed: 2012.05.09 @ 13:39:15



TRILOBITE TESTING, INC.

DRILL STEM TEST REPORT

Venture Resources

25-6s-22w Graham,KS

2255 S. Wadsworth Ste 205 Lakewood CO 80227

L-W Unit #1

ATTN: Greg Mackey

Job Ticket: 46066

DST#: 2

Test Start: 2012.05.04 @ 16:45:00

GENERAL INFORMATION:

Formation: **LKC-B,C**

Deviated: No Whipstock: ft (KB)

Time Tool Opened: 18:35:30

Time Test Ended: 23:03:00

Test Type: Conventional Bottom Hole (Reset)

Tester: Chuck Kreuzer Jr.

Unit No: 61

Interval: 3540.00 ft (KB) To 3581.00 ft (KB) (TVD)

Reference Elevations: 2276.00 ft (KB)

Total Depth: 3581.00 ft (KB) (TVD)

2271.00 ft (CF)

Hole Diameter: 7.88 inches Hole Condition: Good

KB to GR/CF: 5.00 ft

Serial #: 8791

Inside

Press @ Run Depth: 437.31 psig @ 3546.00 ft (KB)

Capacity: 8000.00 psig

Start Date: 2012.05.04

End Date:

2012.05.04

Last Calib.:

2012.05.04

Start Time: 16:45:05

End Time:

23:02:59

Time On Btm:

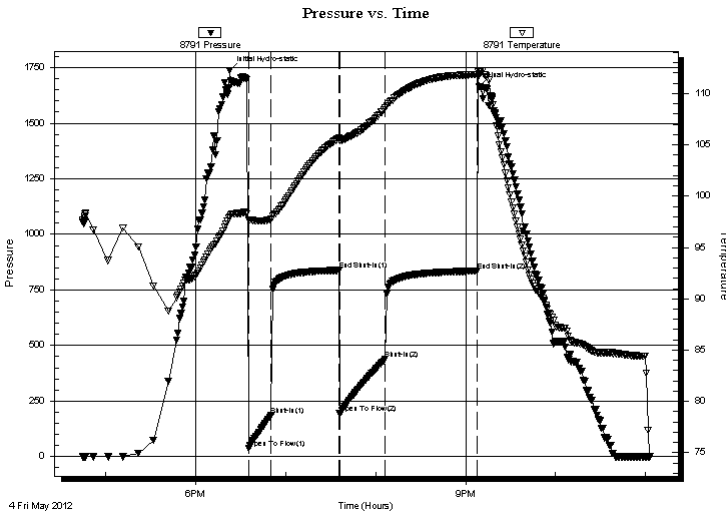
2012.05.04 @ 18:23:00

Time Off Btm:

2012.05.04 @ 21:09:00

TEST COMMENT: IF: Strong blow, Built to B.O.B in 4 mins.
 IS: No blow back over 45 mins.
 FF: Strong blow, Built to B.O.B in 4 mins.
 FS: No blow back over 60 mins.

PRESSURE SUMMARY



Time (Min.)	Pressure (psig)	Temp (deg F)	Annotation
0	1738.05	97.99	Initial Hydro-static
13	38.09	97.68	Open To Flow (1)
28	187.05	97.77	Shut-In(1)
73	838.35	105.64	End Shut-In(1)
73	193.18	105.41	Open To Flow (2)
104	437.31	108.57	Shut-In(2)
165	835.08	111.81	End Shut-In(2)
166	1664.85	112.18	Final Hydro-static

Recovery

Length (ft)	Description	Volume (bbl)
910.00	water-100%	12.76

* Recovery from multiple tests

Gas Rates

Choke (inches)	Pressure (psig)	Gas Rate (Mcf/d)



TRILOBITE TESTING, INC.

DRILL STEM TEST REPORT

Venture Resources

25-6s-22w Graham,KS

2255 S. Wadsworth Ste 205 Lakewood CO 80227

L-W Unit #1

ATTN: Greg Mackey

Job Ticket: 46066

DST#: 2

Test Start: 2012.05.04 @ 16:45:00

GENERAL INFORMATION:

Formation: LKC-B,C

Deviated: No Whipstock: ft (KB)

Time Tool Opened: 18:35:30

Time Test Ended: 23:03:00

Test Type: Conventional Bottom Hole (Reset)

Tester: Chuck Kreuzer Jr.

Unit No: 61

Interval: 3540.00 ft (KB) To 3581.00 ft (KB) (TVD)

Reference Elevations: 2276.00 ft (KB)

Total Depth: 3581.00 ft (KB) (TVD)

2271.00 ft (CF)

Hole Diameter: 7.88 inches Hole Condition: Good

KB to GR/CF: 5.00 ft

Serial #: 8673 Outside

Press @ Run Depth: psig @ 3546.00 ft (KB)

Start Date: 2012.05.04

End Date:

2012.05.04

Capacity: 8000.00 psig

Last Calib.:

2012.05.04

Start Time: 16:45:05

End Time:

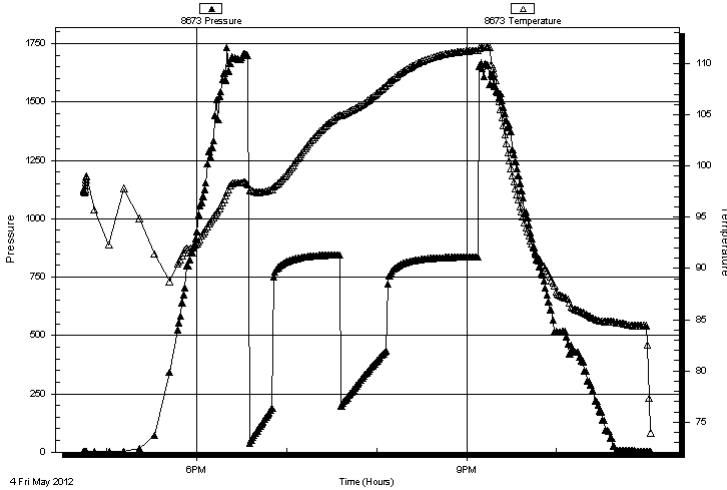
23:02:59

Time On Btm:

Time Off Btm:

TEST COMMENT: IF: Strong blow , Built to B.O.B in 4 mins.
IS: No blow back over 45 mins.
FF: Strong blow , Built to B.O.B in 4 mins.
FS: No blow back over 60 mins.

Pressure vs. Time



PRESSURE SUMMARY

Time (Min.)	Pressure (psig)	Temp (deg F)	Annotation

Recovery

Length (ft)	Description	Volume (bbl)
910.00	water-100%	12.76

Gas Rates

Choke (inches)	Pressure (psig)	Gas Rate (Mcf/d)

* Recovery from multiple tests



**TRILOBITE
TESTING, INC.**

DRILL STEM TEST REPORT

TOOL DIAGRAM

Venture Resources

25-6s-22w Graham,KS

2255 S. Wadsworth Ste 205 Lakewood CO 80227

L-W Unit #1

Job Ticket: 46066

DST#: 2

ATTN: Greg Mackey

Test Start: 2012.05.04 @ 16:45:00

Tool Information

Drill Pipe:	Length: 3525.00 ft	Diameter: 3.80 inches	Volume: 49.45 bbl	Tool Weight: 2600.00 lb
Heavy Wt. Pipe:	Length: 0.00 ft	Diameter: 0.00 inches	Volume: 0.00 bbl	Weight set on Packer: 25000.00 lb
Drill Collar:	Length: 0.00 ft	Diameter: 0.00 inches	Volume: 0.00 bbl	Weight to Pull Loose: 75000.00 lb
			<u>Total Volume: 49.45 bbl</u>	Tool Chased 2.00 ft
Drill Pipe Above KB:	15.00 ft			String Weight: Initial 50000.00 lb
Depth to Top Packer:	3540.00 ft			Final 60000.00 lb
Depth to Bottom Packer:	ft			
Interval between Packers:	41.00 ft			
Tool Length:	71.00 ft			
Number of Packers:	2	Diameter: 6.75 inches		

Tool Comments:

Tool Description

Tool Description	Length (ft)	Serial No.	Position	Depth (ft)	Accum. Lengths
Shut In Tool	5.00			3515.00	
Sampler	2.00			3517.00	
Hydraulic tool	5.00			3522.00	
Jars	5.00			3527.00	
Safety Joint	3.00			3530.00	
Packer	5.00			3535.00	30.00 Bottom Of Top Packer
Packer	5.00			3540.00	
Stubb	1.00			3541.00	
Perforations	4.00			3545.00	
Change Over Sub	1.00			3546.00	
Recorder	0.00	8791	Inside	3546.00	
Recorder	0.00	8673	Outside	3546.00	
Blank Spacing	31.00			3577.00	
Change Over Sub	1.00			3578.00	
Bullnose	3.00			3581.00	41.00 Bottom Packers & Anchor

Total Tool Length: 71.00



**TRILOBITE
TESTING, INC.**

DRILL STEM TEST REPORT

FLUID SUMMARY

Venture Resources **25-6s-22w Graham,KS**
 2255 S. Wadsworth Ste 205 Lakewood CO 80227 **L-W Unit #1**
 ATTN: Greg Mackey Job Ticket: 46066 **DST#: 2**
 Test Start: 2012.05.04 @ 16:45:00

Mud and Cushion Information

Mud Type: Gel Chem	Cushion Type:	Oil API:	deg API
Mud Weight: 9.00 lb/gal	Cushion Length: ft	Water Salinity:	ppm
Viscosity: 54.00 sec/qt	Cushion Volume: bbl		
Water Loss: 5.39 in ³	Gas Cushion Type:		
Resistivity: ohm.m	Gas Cushion Pressure: psig		
Salinity: 900.00 ppm			
Filter Cake: 2.00 inches			

Recovery Information

Recovery Table

Length ft	Description	Volume bbl
910.00	water-100%	12.765

Total Length: 910.00 ft Total Volume: 12.765 bbl
 Num Fluid Samples: 0 Num Gas Bombs: 0 Serial #:
 Laboratory Name: Laboratory Location:
 Recovery Comments: sampler-200psi 2000 ml. water

Serial #: 8791

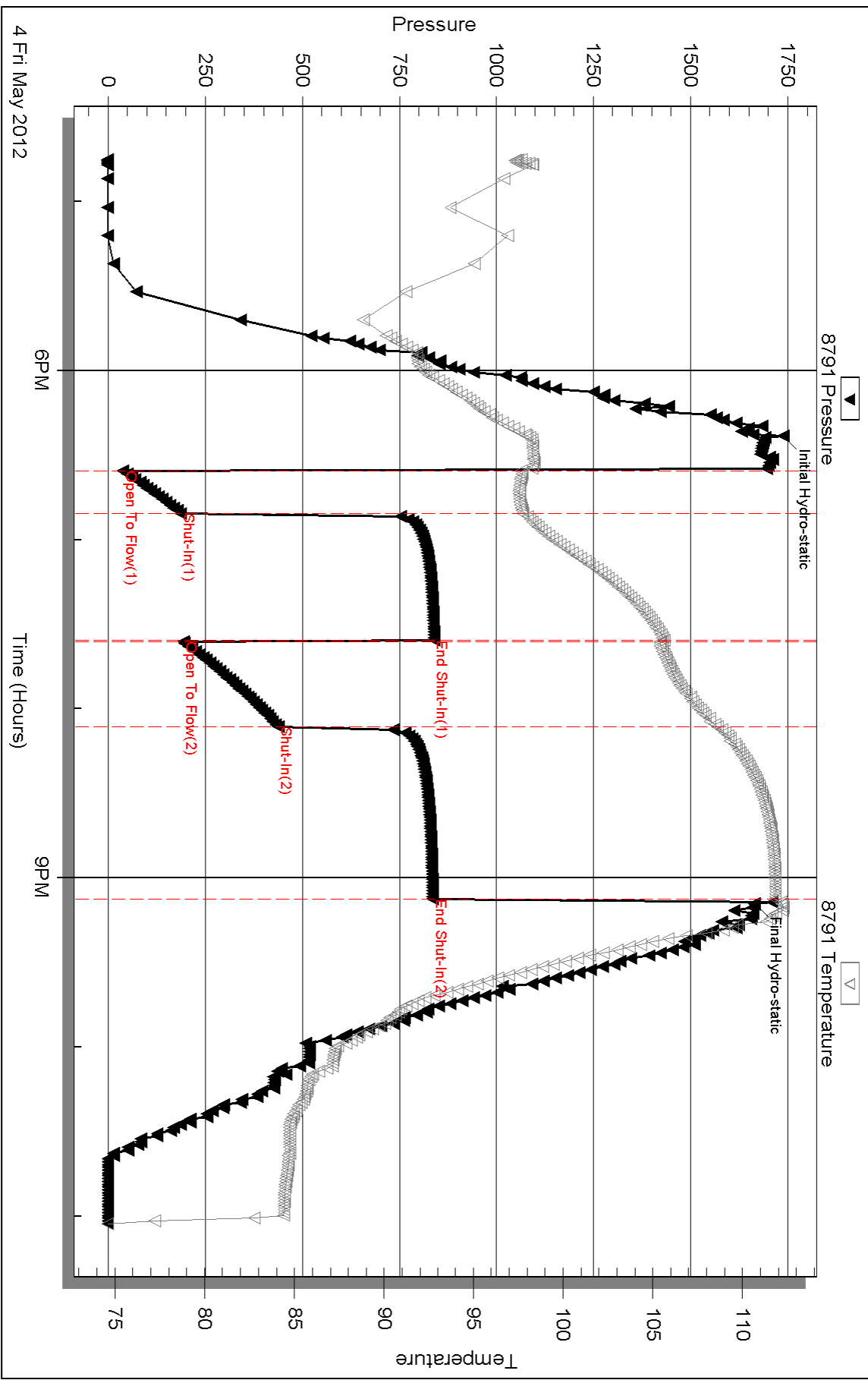
Inside

Venture Resources

L-W Unit #1

DST Test Number: 2

Pressure vs. Time



Triobite Testing, Inc

Ref. No: 46066

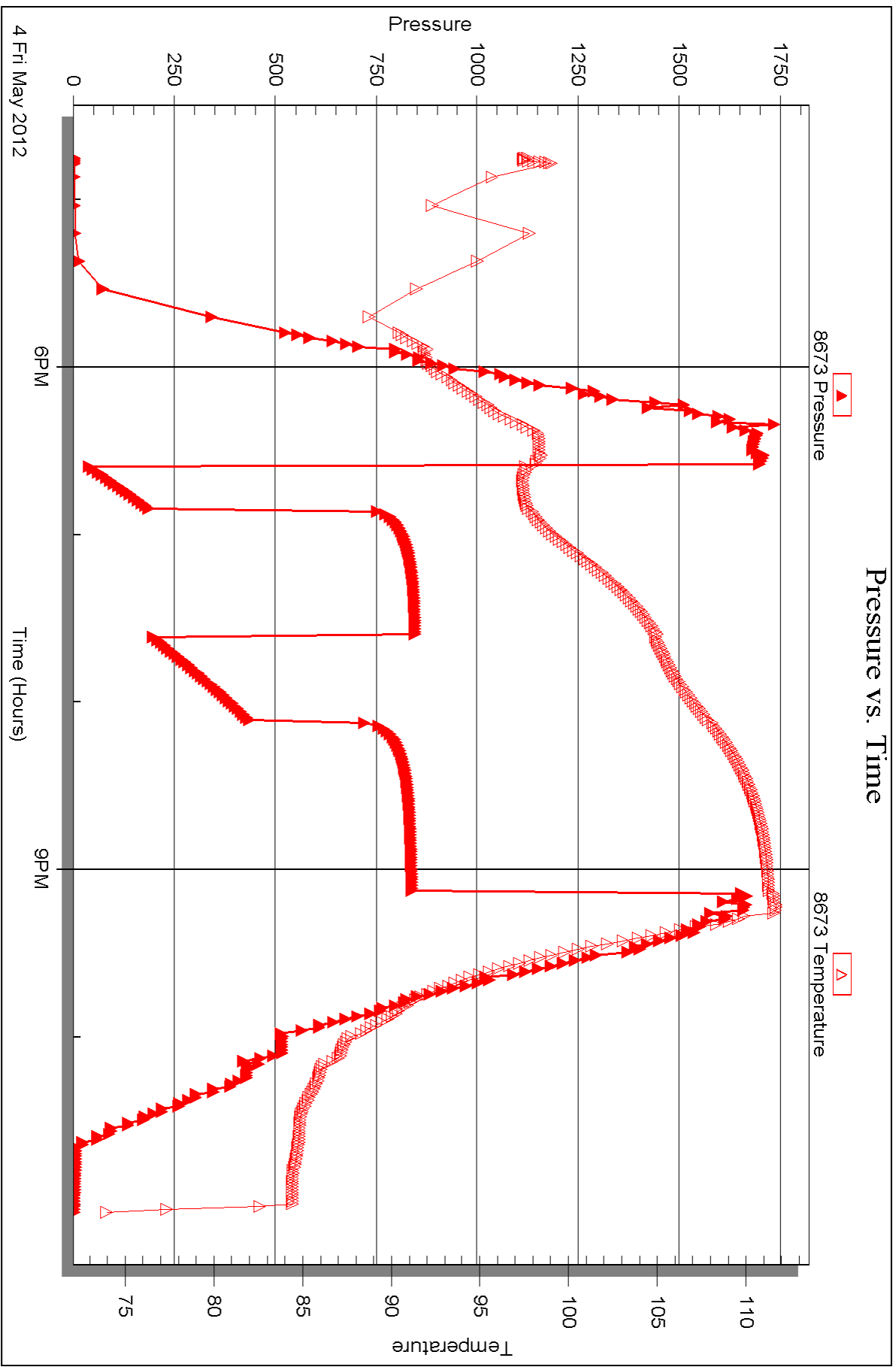
Printed: 2012.05.09 @ 13:39:18

Serial #: 8673

Outside Venture Resources

L-W Unit #1

DST Test Number: 2





DRILL STEM TEST REPORT

Prepared For: **Venture Resources**

2255 S. Wadsworth Ste 205 Lakewood CO
80227

ATTN: Greg Mackey

L-W Unit #1

25-6s-22w Graham,KS

Start Date: 2012.05.05 @ 07:30:00

End Date: 2012.05.05 @ 14:55:00

Job Ticket #: 46067 DST #: 3

Trilobite Testing, Inc
PO Box 362 Hays, KS 67601
ph: 785-625-4778 fax: 785-625-5620

Printed: 2012.05.09 @ 13:38:00



TRILOBITE TESTING, INC.

DRILL STEM TEST REPORT

Venture Resources

25-6s-22w Graham,KS

2255 S. Wadsworth Ste 205 Lakewood CO 80227

L-W Unit #1

ATTN: Greg Mackey

Job Ticket: 46067

DST#: 3

Test Start: 2012.05.05 @ 07:30:00

GENERAL INFORMATION:

Formation: **lkc-d f**

Deviated: No Whipstock: ft (KB)

Time Tool Opened: 08:48:30

Time Test Ended: 14:55:00

Test Type: Conventional Bottom Hole (Reset)

Tester: Chuck Kreuzer Jr.

Unit No: 61

Interval: 3584.00 ft (KB) To 3614.00 ft (KB) (TVD)

Reference Elevations: 2276.00 ft (KB)

Total Depth: 3530.00 ft (KB) (TVD)

2271.00 ft (CF)

Hole Diameter: 7.88 inches Hole Condition: Good

KB to GR/CF: 5.00 ft

Serial #: 8791

Inside

Press @ Run Depth: 75.12 psig @ 3585.00 ft (KB)

Capacity: 8000.00 psig

Start Date: 2012.05.05

End Date:

2012.05.05

Last Calib.:

2012.05.05

Start Time: 07:30:05

End Time:

14:54:59

Time On Btm:

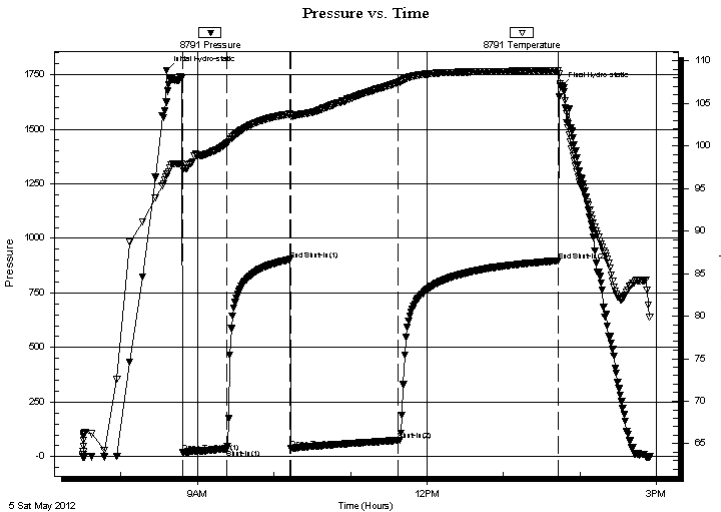
2012.05.05 @ 08:36:00

Time Off Btm:

2012.05.05 @ 13:45:00

TEST COMMENT: IF: weak blow, built to half inch over 30 mins
 IS: weak blow back surface
 FF: weak blow half in. 90 mins
 FS: weak blow back surface over 120 mins

PRESSURE SUMMARY



Time (Min.)	Pressure (psig)	Temp (deg F)	Annotation
0	1769.65	96.65	Initial Hydro-static
13	17.81	97.30	Open To Flow (1)
47	35.84	100.26	Shut-In(1)
97	903.10	103.74	End Shut-In(1)
98	38.00	103.50	Open To Flow (2)
182	75.12	107.44	Shut-In(2)
307	897.34	108.86	End Shut-In(2)
309	1696.86	107.09	Final Hydro-static

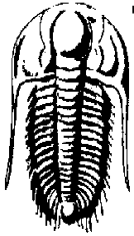
Recovery

Length (ft)	Description	Volume (bbl)
60.00	water	0.84

* Recovery from multiple tests

Gas Rates

Choke (inches)	Pressure (psig)	Gas Rate (Mcf/d)



TRILOBITE TESTING, INC.

DRILL STEM TEST REPORT

Venture Resources
2255 S. Wadsworth Ste 205 Lakewood CO 80227
ATTN: Greg Mackey

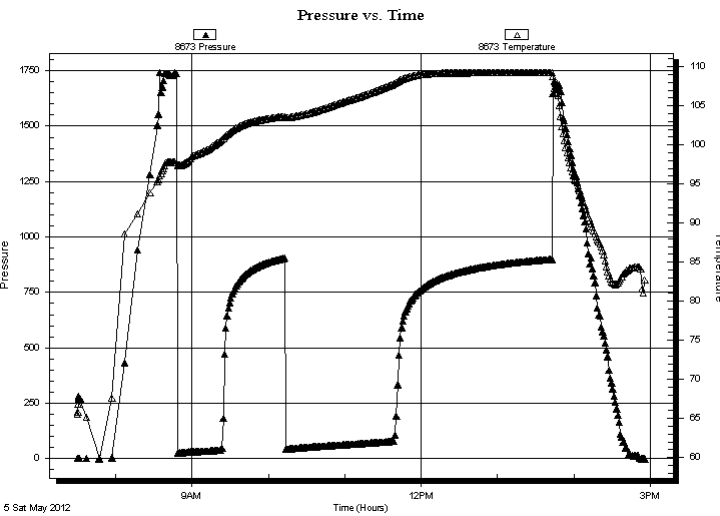
25-6s-22w Graham, KS
L-W Unit #1
Job Ticket: 46067 **DST#: 3**
Test Start: 2012.05.05 @ 07:30:00

GENERAL INFORMATION:

Formation: **lkc-d f**
Deviated: No Whipstock: ft (KB) Test Type: Conventional Bottom Hole (Reset)
Time Tool Opened: 08:48:30 Tester: Chuck Kreuzer Jr.
Time Test Ended: 14:55:00 Unit No: 61
Interval: 3584.00 ft (KB) To 3614.00 ft (KB) (TVD) Reference Elevations: 2276.00 ft (KB)
Total Depth: 3530.00 ft (KB) (TVD) 2271.00 ft (CF)
Hole Diameter: 7.88 inches Hole Condition: Good KB to GR/CF: 5.00 ft

Serial #: 8673 Outside
Press @ Run Depth: psig @ 3585.00 ft (KB) Capacity: 8000.00 psig
Start Date: 2012.05.05 End Date: 2012.05.05 Last Calib.: 2012.05.05
Start Time: 07:30:05 End Time: 14:55:29 Time On Btm:
Time Off Btm:

TEST COMMENT: IF: weak blow, built to half inch over 30 mins
IS: weak blow back surface
FF: weak blow half in. 90 mins
FS: weak blow back surface over 120 mins



PRESSURE SUMMARY

Time (Min.)	Pressure (psig)	Temp (deg F)	Annotation

Recovery

Length (ft)	Description	Volume (bbl)
60.00	water	0.84

Gas Rates

	Choke (inches)	Pressure (psig)	Gas Rate (Mcf/d)

* Recovery from multiple tests



**TRILOBITE
TESTING, INC.**

DRILL STEM TEST REPORT

TOOL DIAGRAM

Venture Resources

25-6s-22w Graham,KS

2255 S. Wadsworth Ste 205 Lakewood CO 80227

L-W Unit #1

Job Ticket: 46067

DST#: 3

ATTN: Greg Mackey

Test Start: 2012.05.05 @ 07:30:00

Tool Information

Drill Pipe:	Length: 3584.00 ft	Diameter: 3.80 inches	Volume: 50.27 bbl	Tool Weight: 2600.00 lb
Heavy Wt. Pipe:	Length: 0.00 ft	Diameter: 0.00 inches	Volume: 0.00 bbl	Weight set on Packer: 25000.00 lb
Drill Collar:	Length: 0.00 ft	Diameter: 0.00 inches	Volume: 0.00 bbl	Weight to Pull Loose: 55000.00 lb
			<u>Total Volume: 50.27 bbl</u>	Tool Chased 2.00 ft
Drill Pipe Above KB:	30.00 ft			String Weight: Initial 50000.00 lb
Depth to Top Packer:	3584.00 ft			Final 55000.00 lb
Depth to Bottom Packer:	ft			
Interval between Packers:	30.00 ft			
Tool Length:	60.00 ft			
Number of Packers:	2	Diameter: 6.75 inches		

Tool Comments:

Tool Description

Tool Description	Length (ft)	Serial No.	Position	Depth (ft)	Accum. Lengths
Shut In Tool	5.00			3559.00	
Sampler	2.00			3561.00	
Hydraulic tool	5.00			3566.00	
Jars	5.00			3571.00	
Safety Joint	3.00			3574.00	
Packer	5.00			3579.00	30.00 Bottom Of Top Packer
Packer	5.00			3584.00	
Stubb	1.00			3585.00	
Recorder	0.00	8791	Inside	3585.00	
Recorder	0.00	8673	Outside	3585.00	
Perforations	26.00			3611.00	
Bullnose	3.00			3614.00	30.00 Bottom Packers & Anchor

Total Tool Length: 60.00



**TRILOBITE
TESTING, INC.**

DRILL STEM TEST REPORT

FLUID SUMMARY

Venture Resources **25-6s-22w Graham,KS**
 2255 S. Wadsworth Ste 205 Lakewood CO 80227 **L-W Unit #1**
 Job Ticket: 46067 **DST#: 3**
 ATTN: Greg Mackey Test Start: 2012.05.05 @ 07:30:00

Mud and Cushion Information

Mud Type: Gel Chem	Cushion Type:	Oil API:	deg API
Mud Weight: 9.00 lb/gal	Cushion Length: ft	Water Salinity:	ppm
Viscosity: 51.00 sec/qt	Cushion Volume: bbl		
Water Loss: 6.39 in ³	Gas Cushion Type:		
Resistivity: ohm.m	Gas Cushion Pressure: psig		
Salinity: 900.00 ppm			
Filter Cake: 2.00 inches			

Recovery Information

Recovery Table

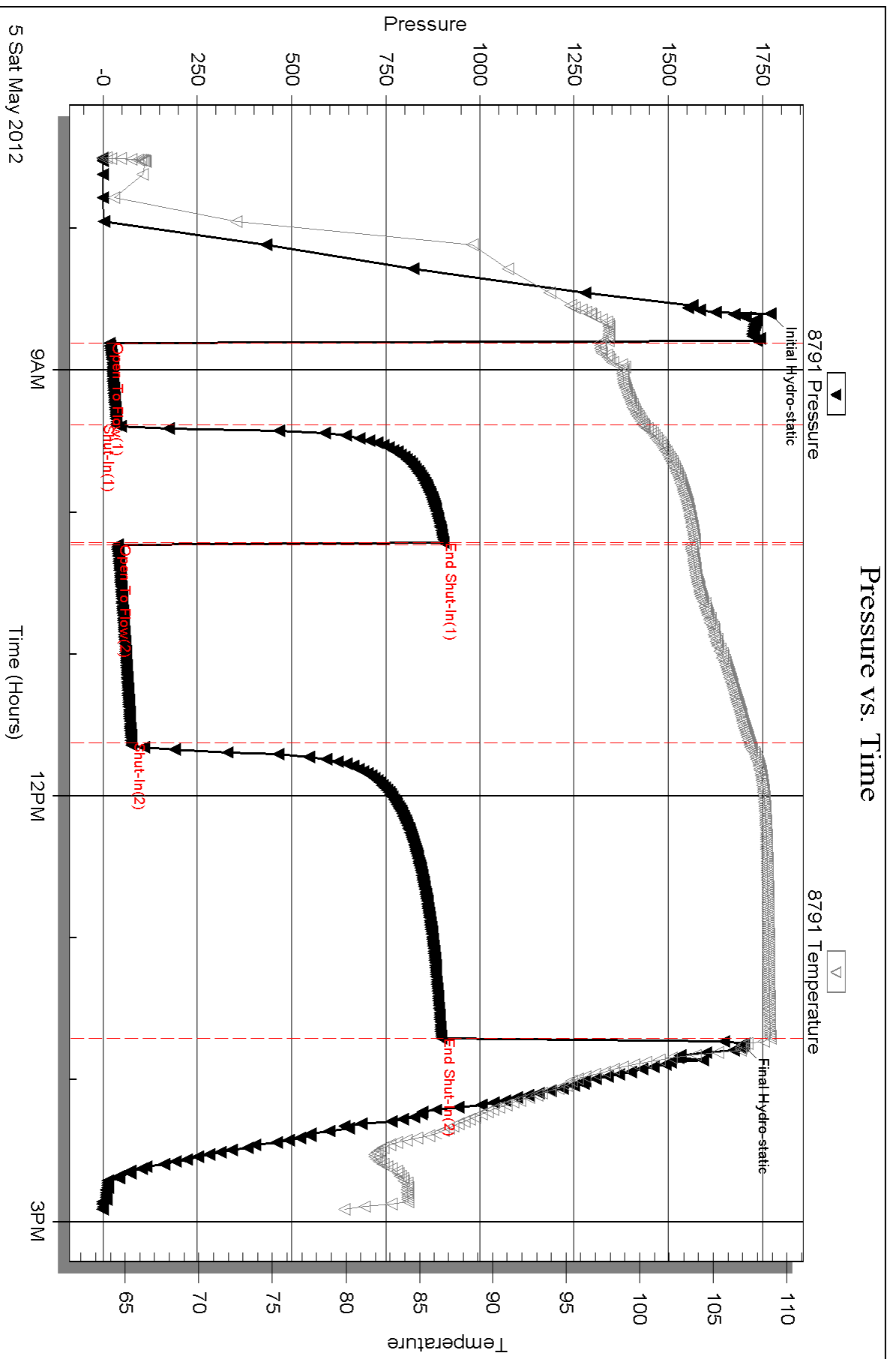
Length ft	Description	Volume bbl
60.00	water	0.842

Total Length: 60.00 ft Total Volume: 0.842 bbl

Num Fluid Samples: 0 Num Gas Bombs: 0 Serial #:

Laboratory Name: Laboratory Location:

Recovery Comments: sampler-150psi-2000ml water

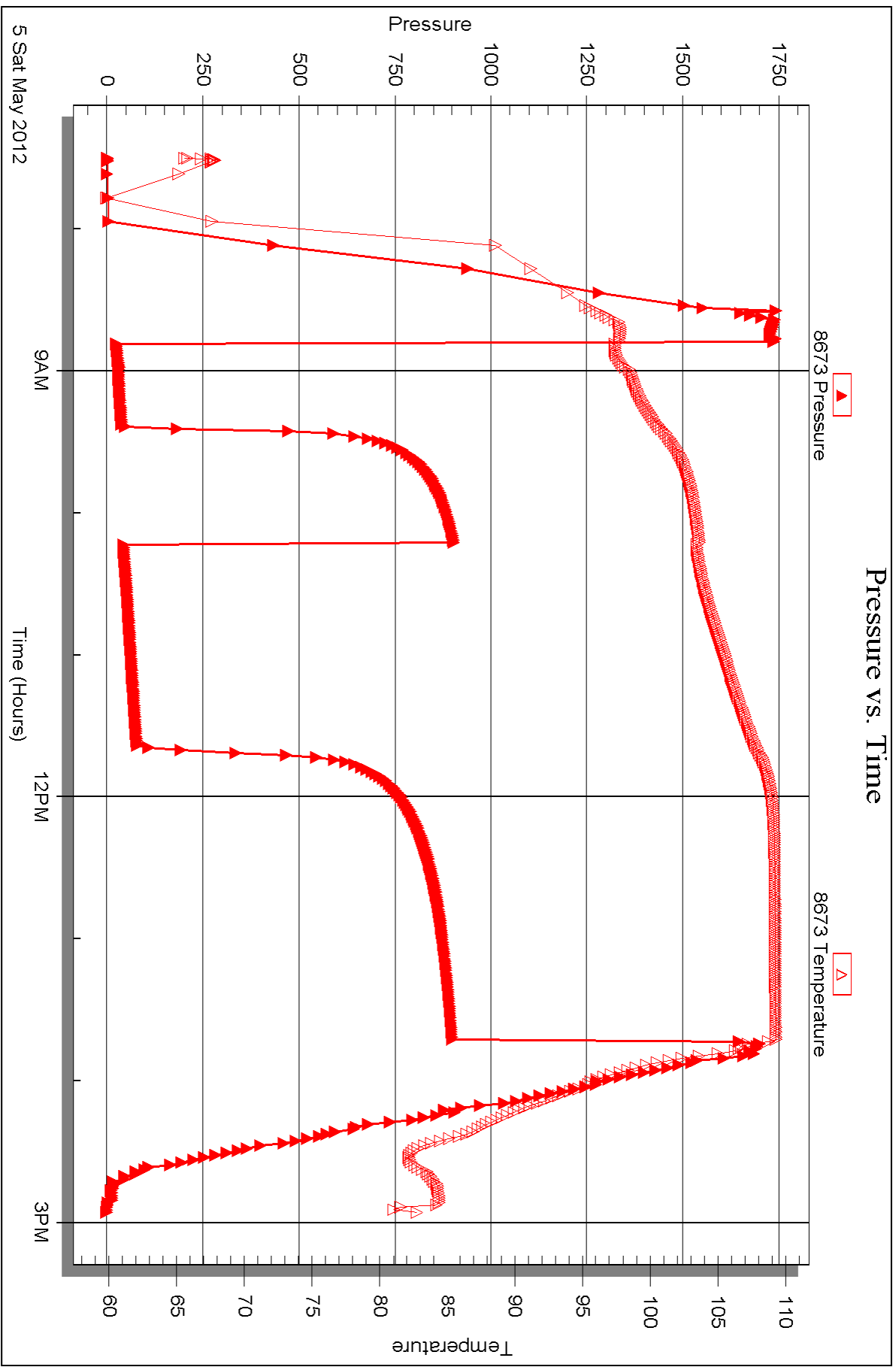


Serial #: 8673

Outside Venture Resources

L-W Unit #1

DST Test Number: 3





DRILL STEM TEST REPORT

Prepared For: **Venture Resources**

2255 S. Wadsworth Ste 205 Lakewood CO
80227

ATTN: Greg Mackey

L-W Unit #1

25-6s-22w Graham,KS

Start Date: 2012.05.06 @ 03:30:00

End Date: 2012.05.06 @ 10:22:30

Job Ticket #: 46068 DST #: 4

Trilobite Testing, Inc
PO Box 362 Hays, KS 67601
ph: 785-625-4778 fax: 785-625-5620

Printed: 2012.05.09 @ 13:37:00



**TRILOBITE
TESTING, INC.**

DRILL STEM TEST REPORT

Venture Resources

25-6s-22w Graham,KS

2255 S. Wadsworth Ste 205 Lakewood CO 80227

L-W Unit #1

ATTN: Greg Mackey

Job Ticket: 46068

DST#: 4

Test Start: 2012.05.06 @ 03:30:00

GENERAL INFORMATION:

Formation: **LKC-G,I**

Deviated: No Whipstock: ft (KB)

Time Tool Opened: 05:36:30

Time Test Ended: 10:22:30

Test Type: Conventional Bottom Hole (Reset)

Tester: Chuck Kreuzer Jr.

Unit No: 61

Interval: 3626.00 ft (KB) To 3690.00 ft (KB) (TVD)

Reference Elevations: 2276.00 ft (KB)

Total Depth: 3690.00 ft (KB) (TVD)

2271.00 ft (CF)

Hole Diameter: 7.88 inches Hole Condition: Good

KB to GR/CF: 5.00 ft

Serial #: 8791

Inside

Press @ Run Depth: 66.24 psig @ 3633.00 ft (KB)

Capacity: 8000.00 psig

Start Date: 2012.05.06

End Date:

2012.05.06

Last Calib.:

2012.05.06

Start Time:

03:30:05

End Time:

10:22:29

Time On Btm:

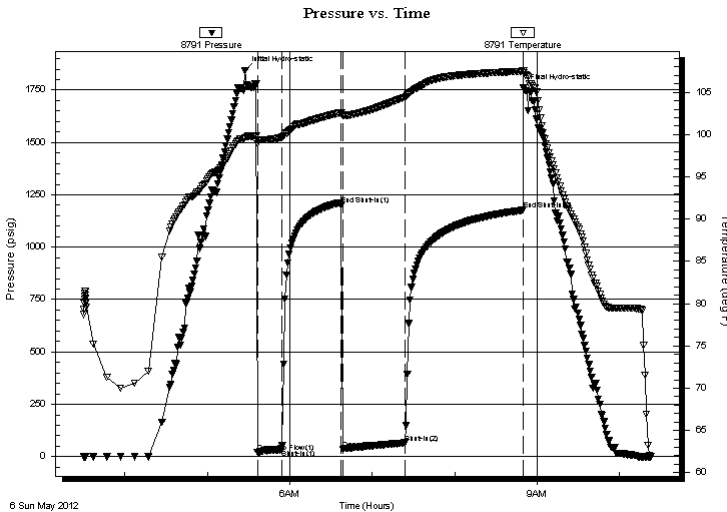
2012.05.06 @ 05:27:30

Time Off Btm:

2012.05.06 @ 08:50:00

TEST COMMENT: IF: Weak blow, built to 2 in. over 15 mins.
 IS: No blow back over 45 mins.
 FF: Weak blow built to 1/2 in. over 45 mins.
 FS: No blow back over 90 mins.

PRESSURE SUMMARY



Time (Min.)	Pressure (psig)	Temp (deg F)	Annotation
0	1843.88	99.61	Initial Hydro-static
9	19.83	98.95	Open To Flow (1)
27	34.22	99.67	Shut-In(1)
70	1201.21	102.63	End Shut-In(1)
71	36.24	102.23	Open To Flow (2)
116	66.24	104.41	Shut-In(2)
202	1176.46	107.50	End Shut-In(2)
203	1759.25	107.59	Final Hydro-static

Recovery

Length (ft)	Description	Volume (bbl)
162.00	mud	2.27

Gas Rates

	Choke (inches)	Pressure (psig)	Gas Rate (Mcf/d)

* Recovery from multiple tests



TRILOBITE TESTING, INC.

DRILL STEM TEST REPORT

Venture Resources **25-6s-22w Graham,KS**
 2255 S. Wadsworth Ste 205 Lakewood CO 80227 **L-W Unit #1**
 ATTN: Greg Mackey Job Ticket: 46068 **DST#: 4**
Test Start: 2012.05.06 @ 03:30:00

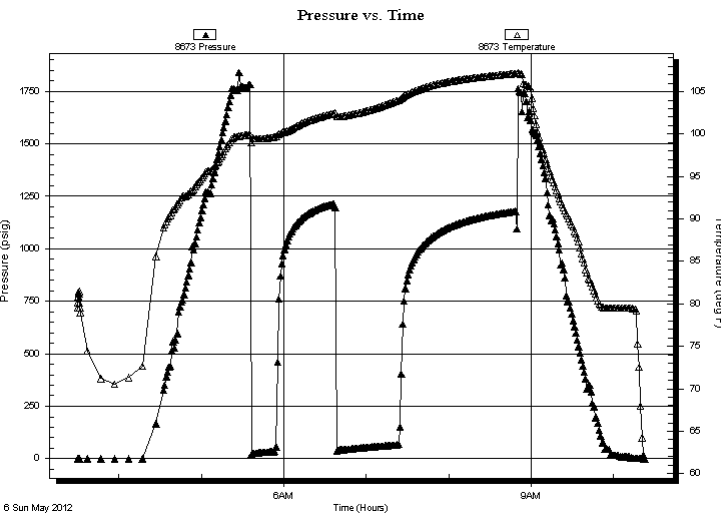
GENERAL INFORMATION:

Formation: **LKC-G,I**
 Deviated: No Whipstock: ft (KB) Test Type: Conventional Bottom Hole (Reset)
 Time Tool Opened: 05:36:30 Tester: Chuck Kreutzer Jr.
 Time Test Ended: 10:22:30 Unit No: 61
Interval: 3626.00 ft (KB) To 3690.00 ft (KB) (TVD) Reference Elevations: 2276.00 ft (KB)
 Total Depth: 3690.00 ft (KB) (TVD) 2271.00 ft (CF)
 Hole Diameter: 7.88 inches Hole Condition: Good KB to GR/CF: 5.00 ft

Serial #: 8673 Outside

Press @RunDepth: psig @ 3633.00 ft (KB) Capacity: 8000.00 psig
 Start Date: 2012.05.06 End Date: 2012.05.06 Last Calib.: 2012.05.06
 Start Time: 03:30:05 End Time: 10:22:29 Time On Btm: Time Off Btm:

TEST COMMENT: IF: Weak blow , built to 2 in. over 15 mins.
 IS: No blow back over 45 mins.
 FF: Weak blow built to 1/2 in. over 45 mins
 FS: No blow back over 90 mins.



PRESSURE SUMMARY

Time (Min.)	Pressure (psig)	Temp (deg F)	Annotation

Recovery

Length (ft)	Description	Volume (bbl)
162.00	mud	2.27

Gas Rates

	Choke (inches)	Pressure (psig)	Gas Rate (Mcf/d)

* Recovery from multiple tests



**TRILOBITE
TESTING, INC.**

DRILL STEM TEST REPORT

TOOL DIAGRAM

Venture Resources

25-6s-22w Graham,KS

2255 S. Wadsworth Ste 205 Lakewood CO 80227

L-W Unit #1

Job Ticket: 46068

DST#: 4

ATTN: Greg Mackey

Test Start: 2012.05.06 @ 03:30:00

Tool Information

Drill Pipe:	Length: 3620.00 ft	Diameter: 3.80 inches	Volume: 50.78 bbl	Tool Weight: 2200.00 lb
Heavy Wt. Pipe:	Length: 0.00 ft	Diameter: 0.00 inches	Volume: 0.00 bbl	Weight set on Packer: 25000.00 lb
Drill Collar:	Length: 0.00 ft	Diameter: 0.00 inches	Volume: 0.00 bbl	Weight to Pull Loose: 55000.00 lb
			<u>Total Volume: 50.78 bbl</u>	Tool Chased 2.00 ft
Drill Pipe Above KB:	24.00 ft			String Weight: Initial 50000.00 lb
Depth to Top Packer:	3626.00 ft			Final 50000.00 lb
Depth to Bottom Packer:	ft			
Interval between Packers:	64.00 ft			
Tool Length:	94.00 ft			
Number of Packers:	2	Diameter: 6.75 inches		

Tool Comments:

Tool Description	Length (ft)	Serial No.	Position	Depth (ft)	Accum. Lengths
------------------	-------------	------------	----------	------------	----------------

Shut In Tool	5.00			3601.00	
Sampler	2.00			3603.00	
Hydraulic tool	5.00			3608.00	
Jars	5.00			3613.00	
Safety Joint	3.00			3616.00	
Packer	5.00			3621.00	30.00 Bottom Of Top Packer
Packer	5.00			3626.00	
Stubb	1.00			3627.00	
Perforations	5.00			3632.00	
Change Over Sub	1.00			3633.00	
Recorder	0.00	8791	Inside	3633.00	
Recorder	0.00	8673	Outside	3633.00	
Blank Spacing	31.00			3664.00	
Change Over Sub	1.00			3665.00	
Perforations	22.00			3687.00	
Bullnose	3.00			3690.00	64.00 Bottom Packers & Anchor
Total Tool Length:	94.00				



**TRILOBITE
TESTING, INC.**

DRILL STEM TEST REPORT

FLUID SUMMARY

Venture Resources

25-6s-22w Graham,KS

2255 S. Wadsworth Ste 205 Lakewood CO 80227

L-W Unit #1

Job Ticket: 46068

DST#: 4

ATTN: Greg Mackey

Test Start: 2012.05.06 @ 03:30:00

Mud and Cushion Information

Mud Type: Gel Chem

Cushion Type:

Oil API:

deg API

Mud Weight: 9.00 lb/gal

Cushion Length:

ft

Water Salinity:

ppm

Viscosity: 58.00 sec/qt

Cushion Volume:

bbbl

Water Loss: 5.39 in³

Gas Cushion Type:

Resistivity: ohm.m

Gas Cushion Pressure:

psig

Salinity: 700.00 ppm

Filter Cake: 2.00 inches

Recovery Information

Recovery Table

Length ft	Description	Volume bbl
162.00	mud	2.272

Total Length: 162.00 ft Total Volume: 2.272 bbl

Num Fluid Samples: 0

Num Gas Bombs: 0

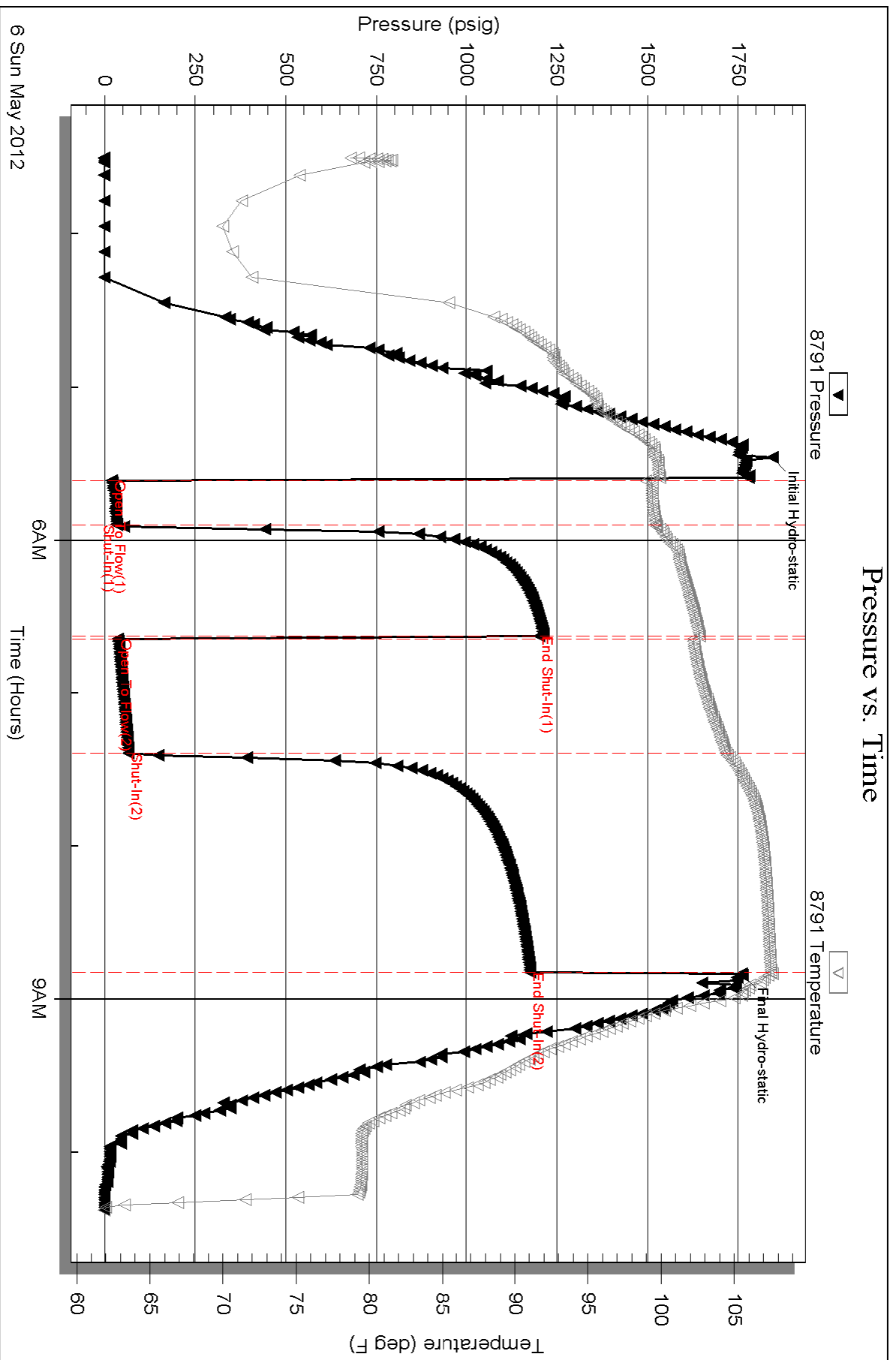
Serial #:

Laboratory Name:

Laboratory Location:

Recovery Comments: sampler- 175 psi. 2000ml. mud

Pressure vs. Time

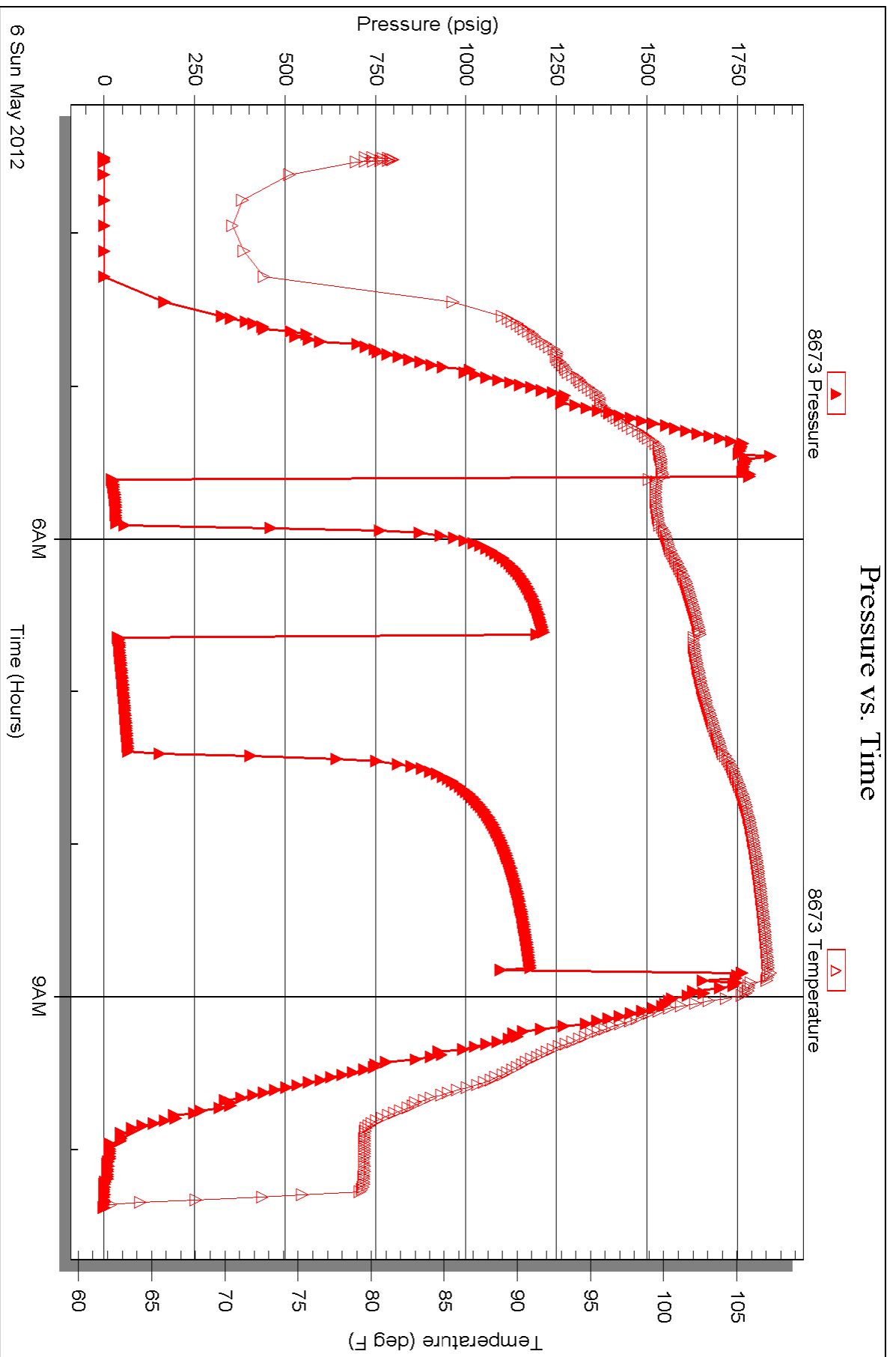


Serial #: 8673

Outside Venture Resources

L-W Unit #1

DST Test Number: 4





TRILOBITE TESTING INC.

P.O. Box 1733 • Hays, Kansas 67601

Test Ticket

NO. 46065

Well Name & No. L-W unit Test No. 1 Date 5-3-2012
 Company Venture Resources Inc. Elevation 2276 KB 2271 GL
 Address 2255 S. Wadsworth, STE 205 Lakewood Co. 80227
 Co. Rep / Geo. Gregg Mackey Rig American Eagle #13
 Location: Sec. 25 Twp. 65 Rge. 22W Co. Grant State Ks

Interval Tested 3500 3530 Zone Tested Toronto
 Anchor Length 30 Drill Pipe Run 3492 Mud Wt. 8.7
 Top Packer Depth 3540 Drill Collars Run -0- Vis 58
 Bottom Packer Depth 3560 Wt. Pipe Run -0- WL 5.4
 Total Depth 3530 Chlorides 700 ppm System LCM 1

Blow Description IFI work flow died in 1 min.
ISI: No Blow back over 45 mins.
FFI No blow over 15 mins.
ISI No blow back over 45 mins.

Rec	Feet of	%gas	%oil	%water	%mud
<u>5</u>	<u>mud oil specs</u>				
<u>Sampler</u>	<u>175 psi 2000ml mud</u>				

Rec Total	BHT	Gravity	API RW	@	F Chlorides	ppm
<u>5</u>	<u>102</u>	<input checked="" type="checkbox"/> Test	<u>1150</u>			
(A) Initial Hydrostatic	<u>1897</u>	<input checked="" type="checkbox"/> Jars	<u>250</u>		T-On Location	<u>22:00</u>
(B) First Initial Flow	<u>16</u>	<input checked="" type="checkbox"/> Safety Joint	<u>75</u>		T-Started	<u>00:15</u>
(C) First Final Flow	<u>25</u>	<input type="checkbox"/> Circ Sub			T-Open	<u>2:19</u>
(D) Initial Shut-In	<u>1132</u>	<input type="checkbox"/> Hourly Standby			T-Pulled	<u>4:20</u>
(E) Second Initial Flow	<u>18</u>	<input checked="" type="checkbox"/> Mileage	<u>55x2 = 110x1.50 = 170.50</u>		T-Out	<u>6:16</u>
(F) Second Final Flow	<u>31</u>	<input checked="" type="checkbox"/> Sampler	<u>250</u>		Comments	
(G) Final Shut-In	<u>1093</u>	<input type="checkbox"/> Straddle			<input type="checkbox"/> Ruined Shale Packer	
(H) Final Hydrostatic	<u>1659</u>	<input type="checkbox"/> Shale Packer			<input type="checkbox"/> Ruined Packer	

Initial Open	<u>15</u>	<input type="checkbox"/> Extra Packer		<input type="checkbox"/> Extra Copies	
Initial Shut-In	<u>45</u>	<input type="checkbox"/> Extra Recorder		Sub Total	<u>0</u>
Final Flow	<u>15</u>	<input type="checkbox"/> Day Standby		Total	<u>1895.50</u>
Final Shut-In	<u>45</u>	<input type="checkbox"/> Accessibility		MP/DST Disc't	
Sub Total		<u>1895.50</u>			

Approved By _____ Our Representative Chub Nystep

TriLOBite Testing Inc. shall not be liable for damaged of any kind of the property or personnel of the one for whom a test is made, or for any loss suffered or sustained, directly or indirectly, through the use of its equipment, or its statements or opinion concerning the results of any test, tools lost or damaged in the hole shall be paid for at cost by the party for whom the test is made.



TRILOBITE TESTING INC.

P.O. Box 1733 • Hays, Kansas 67601

Test Ticket

NO. 46066

Well Name & No. L-w unit Test No. 2 Date 5-4-2012
 Company Venture Resources Inc. Elevation 2276 KB 2271 GL
 Address 2255 S. Wadsworth, STE. 205 Lakewood Co. 80227
 Co. Rep / Geo. Gregg Mackey Rig American Eagle #3
 Location: Sec. 25 Twp. 65 Rge. 22W Co. Graham State Ks.

Interval Tested 3540 3581 Zone Tested LKC-B,C
 Anchor Length 41 Drill Pipe Run 3525 Mud Wt. 9.0
 Top Packer Depth 3535 Drill Collars Run -0- Vis 54
 Bottom Packer Depth 3540 Wt. Pipe Run -0- WL 5.4
 Total Depth 3581 Chlorides 900 ppm System LCM 1

Blow Description IF! Built to B.O.B in 4 mins.
ISI! No blow back over 45 mins.
FF! Strong blow built to B.O.B in 4 mins.
FSI! No blow back over 60 mins.

Rec	Feet of	%gas	%oil	%water	%mud
910	water			100	
Sampler	200 200NL water				

Rec Total	BHT	Gravity	API RW	@	°F	Chlorides	ppm
910	111.8	<input checked="" type="checkbox"/> Test	1150				
(A) Initial Hydrostatic	1738	<input checked="" type="checkbox"/> Jars	250				
(B) First Initial Flow	38	<input checked="" type="checkbox"/> Safety Joint	75				
(C) First Final Flow	187	<input type="checkbox"/> Circ Sub					
(D) Initial Shut-In	838	<input type="checkbox"/> Hourly Standby					
(E) Second Initial Flow	193	<input checked="" type="checkbox"/> Mileage	55x2=110	170.50			
(F) Second Final Flow	473	<input checked="" type="checkbox"/> Sampler	250				
(G) Final Shut-In	835	<input type="checkbox"/> Straddle					
(H) Final Hydrostatic	1665	<input type="checkbox"/> Shale Packer					

Initial Open	15	<input type="checkbox"/> Extra Packer		<input type="checkbox"/> Ruined Shale Packer	
Initial Shut-In	45	<input type="checkbox"/> Extra Recorder		<input type="checkbox"/> Ruined Packer	
Final Flow	30	<input type="checkbox"/> Day Standby		<input type="checkbox"/> Extra Copies	
Final Shut-In	60	<input type="checkbox"/> Accessibility		Sub Total	0
		Sub Total	1895.50	Total	1895.50

Approved By _____ Our Representative Chuck Hogue
 Trilobite Testing Inc. shall not be liable for damaged of any kind of the property or personnel of the one for whom a test is made, or for any loss suffered or sustained, directly or indirectly, through the use of its equipment, or its statements or opinion concerning the results of any test, tools lost or damaged in the hole shall be paid for at cost by the party for whom the test is made.



TESTING INC.

P.O. Box 1733 • Hays, Kansas 67601

NO. 46067

Well Name & No. L-w unit Test No. 38 Date 5-5-2012
 Company Venture Resources Inc. Elevation 2276 KB 2271 GL
 Address 2255 S. Wadsworth, STE Lakewood Co 80227
 Co. Rep / Geo. Gregg Mackey Rig American Eagle #3
 Location: Sec. 25 Twp. 6S Rge. 22W Co. Graham State Ks.

Interval Tested 3584 3614 Zone Tested UKC-D-F
 Anchor Length 30 Drill Pipe Run 3584 Mud Wt. 9.2
 Top Packer Depth 3579 Drill Collars Run 0 Vis 51
 Bottom Packer Depth 3584 Wt. Pipe Run 0 WL 6.4
 Total Depth 3614 Chlorides 900 ppm System LCM 1#

Blow Description IF: weak blow built to 2in. over 30 mins

ISF: weak blow built over 45 mins.

FF: weak blow 1/2 in over 90 mins.

FSE: no blow built over 120 mins.

Rec	Feet of	%gas	%oil	%water	%mud
<u>60</u>	<u>water</u>			<u>100%</u>	
<u>Sampler</u>	<u>150 PSI: 200ml water</u>				

Rec Total _____ BHT _____ Gravity _____ API RW _____ @ _____ °F Chlorides _____ ppm

(A) Initial Hydrostatic _____ Test 1150 T-On Location 7:30

(B) First Initial Flow _____ Jars 250 T-Started _____

(C) First Final Flow _____ Safety Joint 75 T-Open 8:48

(D) Initial Shut-In _____ Circ Sub _____ T-Pulled 13:45

(E) Second Initial Flow _____ Hourly Standby _____ T-Out 14:55

(F) Second Final Flow _____ Mileage 55 x 2 = 110 170.50 Comments _____

(G) Final Shut-In _____ Sampler 250 _____

(H) Final Hydrostatic _____ Straddle _____ Ruined Shale Packer _____

Shale Packer _____ Ruined Packer _____

Initial Open 30 Extra Packer _____ Extra Copies _____

Initial Shut-In 45 Extra Recorder _____ Sub Total 0

Final Flow 90 Day Standby _____ Total 1895.50

Final Shut-In 120 Accessibility _____ MP/DST Disc't _____

Sub Total 1895.50

Approved By _____ Our Representative [Signature]

Tribite Testing Inc. shall not be liable for damaged of any kind of the property or personnel of the one for whom a test is made, or for any loss suffered or sustained, directly or indirectly, through the use of its equipment, or its statements or opinion concerning the results of any test, tools lost or damaged in the hole shall be paid for at cost by the party for whom the test is made.



TRILOBITE TESTING INC.

P.O. Box 1733 • Hays, Kansas 67601

Test Ticket

NO. 46068

Well Name & No. L-W unit Test No. 4 Date 5-6-2012
 Company Venture Resources Inc. Elevation 2276 KB 2271 GL
 Address 2255 S. Wadsworth, Ste Lakewood Co. 80227
 Co. Rep / Geo. Gregg Mackey Rig American Eagle #3
 Location: Sec. 25 Twp. 6S Rge. 22W Co. Graham State KS

Interval Tested 7626 3620 Zone Tested LKC-6, I
 Anchor Length 64 Drill Pipe Run 3620 Mud Wt. 9.0
 Top Packer Depth 3621 Drill Collars Run -0- Vis 58
 Bottom Packer Depth 3626 Wt. Pipe Run -0- WL 6.4
 Total Depth 3620 Chlorides 900 ppm System LCM 3#

Blow Description IF: wet blow, built to 2in. over 15 mins.
ISF: No blow back over 45 mins.
FF: wet blow, built to 1/2 in. over 45 mins.
FSI: No blow back over 90 mins.

Rec	Feet of	%gas	%oil	%water	%mud
<u>100</u>	<u>mud</u>			<u>100</u>	
<u>0</u>	<u>sample - 200cc ml mud 175 pps</u>				

Rec Total 120 BHT 107 Gravity _____ API RW _____ @ _____ ° F Chlorides _____ ppm

(A) Initial Hydrostatic	<u>1844</u>	<input checked="" type="checkbox"/> Test	1150	T-On Location	<u>1:30</u>
(B) First Initial Flow	<u>20</u>	<input checked="" type="checkbox"/> Jars	250	T-Started	<u>3:30</u>
(C) First Final Flow	<u>34</u>	<input checked="" type="checkbox"/> Safety Joint	75	T-Open	<u>5:36</u>
(D) Initial Shut-In	<u>1201</u>	<input type="checkbox"/> Circ Sub		T-Pulled	<u>8:45</u>
(E) Second Initial Flow	<u>36</u>	<input type="checkbox"/> Hourly Standby		T-Out	<u>10:22</u>
(F) Second Final Flow	<u>66</u>	<input checked="" type="checkbox"/> Mileage	170.50	Comments	
(G) Final Shut-In	<u>1176</u>	<input checked="" type="checkbox"/> Sampler	250		
(H) Final Hydrostatic	<u>1759</u>	<input type="checkbox"/> Straddle			
Initial Open	<u>15</u>	<input type="checkbox"/> Shale Packer		<input type="checkbox"/> Ruined Shale Packer	
Initial Shut-In	<u>45</u>	<input type="checkbox"/> Extra Packer		<input type="checkbox"/> Ruined Packer	
Final Flow	<u>45</u>	<input type="checkbox"/> Extra Recorder		<input type="checkbox"/> Extra Copies	
Final Shut-In	<u>90</u>	<input type="checkbox"/> Day Standby		Sub Total	<u>0</u>
		<input type="checkbox"/> Accessibility		Total	<u>1895.50</u>
		Sub Total	<u>1895.50</u>	MP/DST Disc't	

Approved By _____ Our Representative Chuck Mackey
 Trilobite Testing Inc. shall not be liable for damaged of any kind of the property or personnel of the one for whom a test is made, or for any loss suffered or sustained, directly or indirectly, through the use of its equipment, or its statements or opinion concerning the results of any test, tools lost or damaged in the hole shall be paid for at cost by the party for whom the test is made.