

KIM B. SHOEMAKER

CONSULTING GEOLOGIST

316-684-9709 * WICHITASKS
GEOLOGISTS REPORT

DRILLING TIME AND SAMPLE LOG

FIELD: MAGIE NORTHWEST
LEASE: #1 WIKENS 5 B
COMPANY: RITCHIE EXPLORATION, INC.
ELEVATIONS: KB: 2886

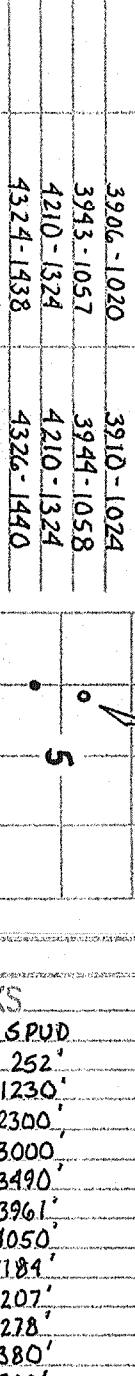
LOCATION: 2160' RLL & H45' EWL
SEC: 5 T15P 17S R06 S04W
COUNTY: LANE STATE KANSAS
CONTRACTOR: L.D. DRILLING, INC.

SHAPE: 2-20-12 COMP: 3-4-12
RTD: 4190 LTD: 4187
MUD UP: 3511 TYPE MUD: CHEMICAL

SAMPLES SAVED FROM: 3600 TO 4140
DRILLING TIME KEPT FROM: 3600 TO 4140
SAMPLES EXAMINED FROM: 3600 TO 4140
GEOLOGICAL SUPERVISION FROM: 3700 TO 4140

GEOLOGIST ON WELL: Kim B. SHOEMAKER

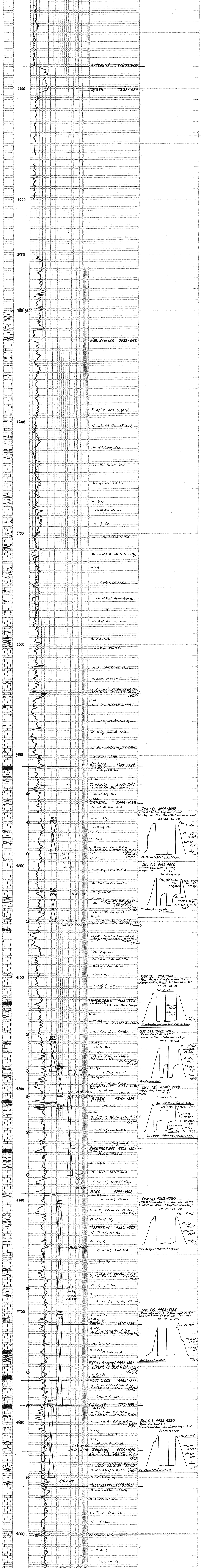
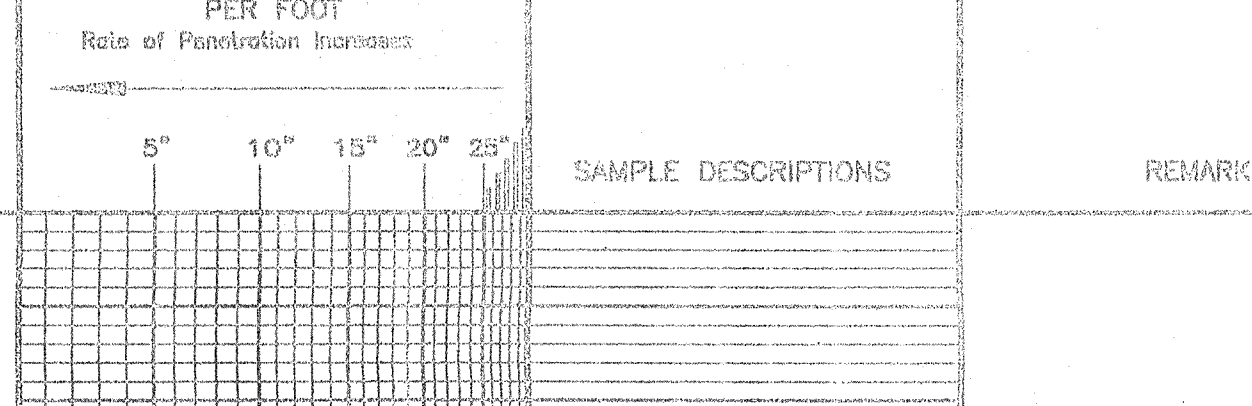
FORMATION TOPS	LOG	SAMPLES
ANNORITE	2276+610	2280+606
B/ANN.	2288+588	2302+584
STOTLER	3524-638	3528-642
HEBNER	3910-1020	3910-1024
LANSING	3943-1057	3943-1058
STARBUCK	4101-1324	4101-1324
MARKETON	4324-1458	4324-1458
FORT SCOT	4460-1574	4460-1577
CHEROKEE	4533-1577	4533-1577
KANSASIAN	4533-1664	4533-1672



REMARKS:
2-20-12 5:00 P
2-21-12 2:52
2-22-12 12:30
2-23-12 23:00
2-24-12 30:00
2-25-12 34:50
2-26-12 39:11
2-27-12 40:50
2-28-12 41:84
2-29-12 42:07
3-1-12 42:28
3-2-12 43:80
3-3-12 45:01
3-4-12 46:17

API: 15-101-22346

LEGEND



API: 15-101-22346