

Sean Deenihan Petroleum Geologist

GEOLOGIST'S REPORT DRILLING TIME AND SAMPLE LOG

COMPANY: Lasso Energy, LLC
LEASE: McClaren #1
ELEVATIONS: KB 2222'

FIELD: Nichols
LOCATION: 1390' E.N. & 2690' E.E.L.

SEC: 5 TWP: 30S RGE: 18W
COUNTY: Kiowa STATE: Kansas

CONTRACTOR: Val Energy Res #3
SPUD: 1/15/2012 COMP: #124/2012

RTD: 5691' LTD: 5691'
MUD UP: 5613' TYPE MUD: Chemical

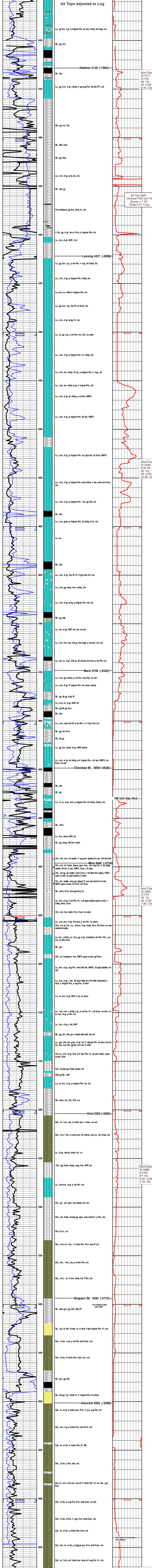
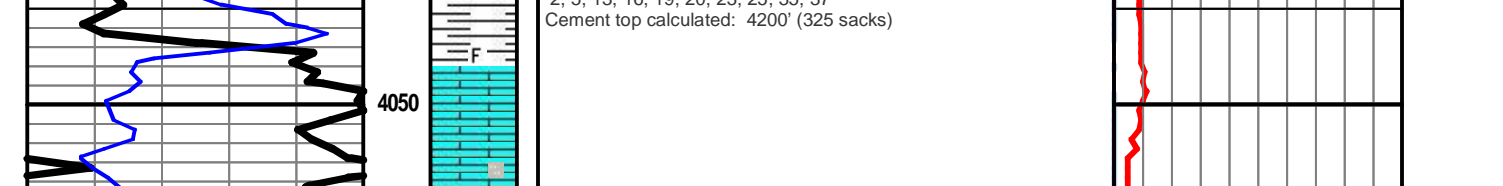
SAMPLES SAVED FROM: 4000' TO RTD
DRILLING TIME KEPT FROM: 4000' TO RTD
SAMPLES EXAMINED FROM: 4000' TO RTD

GEOLOGICAL SUPERVISION FROM: 3900'
REFERENCE WELL: Parkin B#3
MUD LOG: MUD LOG
ELECTRICAL SURFACE: 8-5/8" @ 477'
CONDUIT: 5-5/8" @ 5668'

Formation	Sample Tops	E-Log Tops	Sheet
Heebner Sh.	4126 (-1904)	4126 (-1904)	
Austine	4321 (-2099)	4321 (-2099)	
Slack Sh.	4384 (-2326)	4384 (-2326)	
Merritton	4748 (-2326)	4748 (-2326)	
Mississippi	4946 (-2724)	4946 (-2724)	
Viola	5304 (-2982)	5304 (-2982)	
Simpson Sh.	5394 (-3172)	5394 (-3172)	
Arbuckle	5502 (-3280)	5502 (-3280)	

REMARKS: The McClaren #1 was evaluated through sample and log analysis. The decision was made to run 5.5" 17# production casing to test the production potential of the Mississippi formation.

Respectfully Submitted, Sean Deenihan



Survey @ TD 0.75"

Lasso Energy, LLC.
McClaren #1
Sec. 5- 30S- 18 W
Kiowa Co., KS