

# ADVANTAGE ELEVATIONS

OIL FIELD SURVEYORS

BOX 8604 - PRATT, KS 67124  
(620) 672-6491

510124

INVOICE NO

N-10 EXPLORATION LLC  
OPERATOR

6  
NO

Medicine River Ranch D  
FARM

Barber  
COUNTY

10  
S

34s  
T

11w  
R

1610' FSL & 1400' FEL  
LOCATION

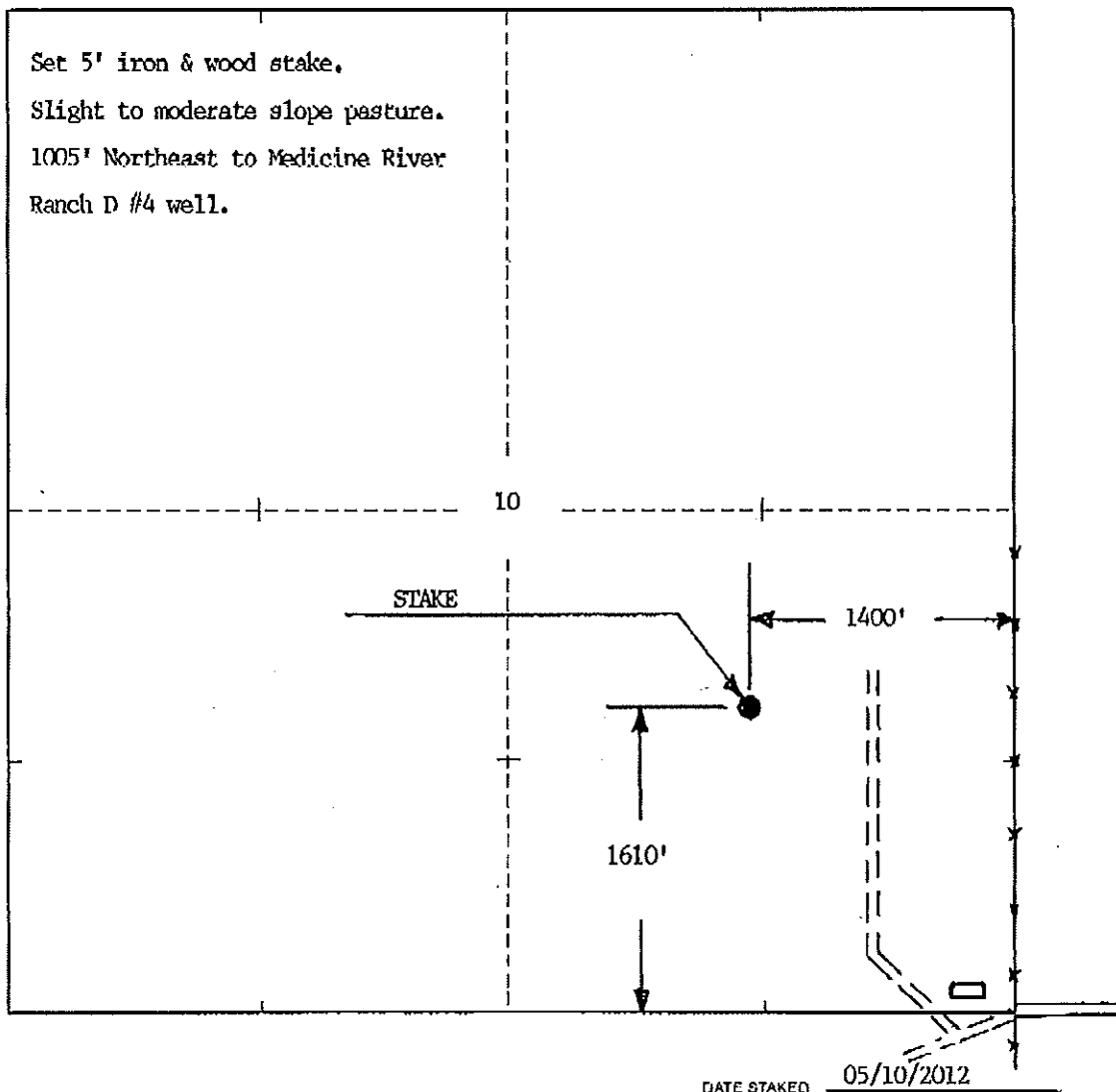
ELEVATION 1354' GR

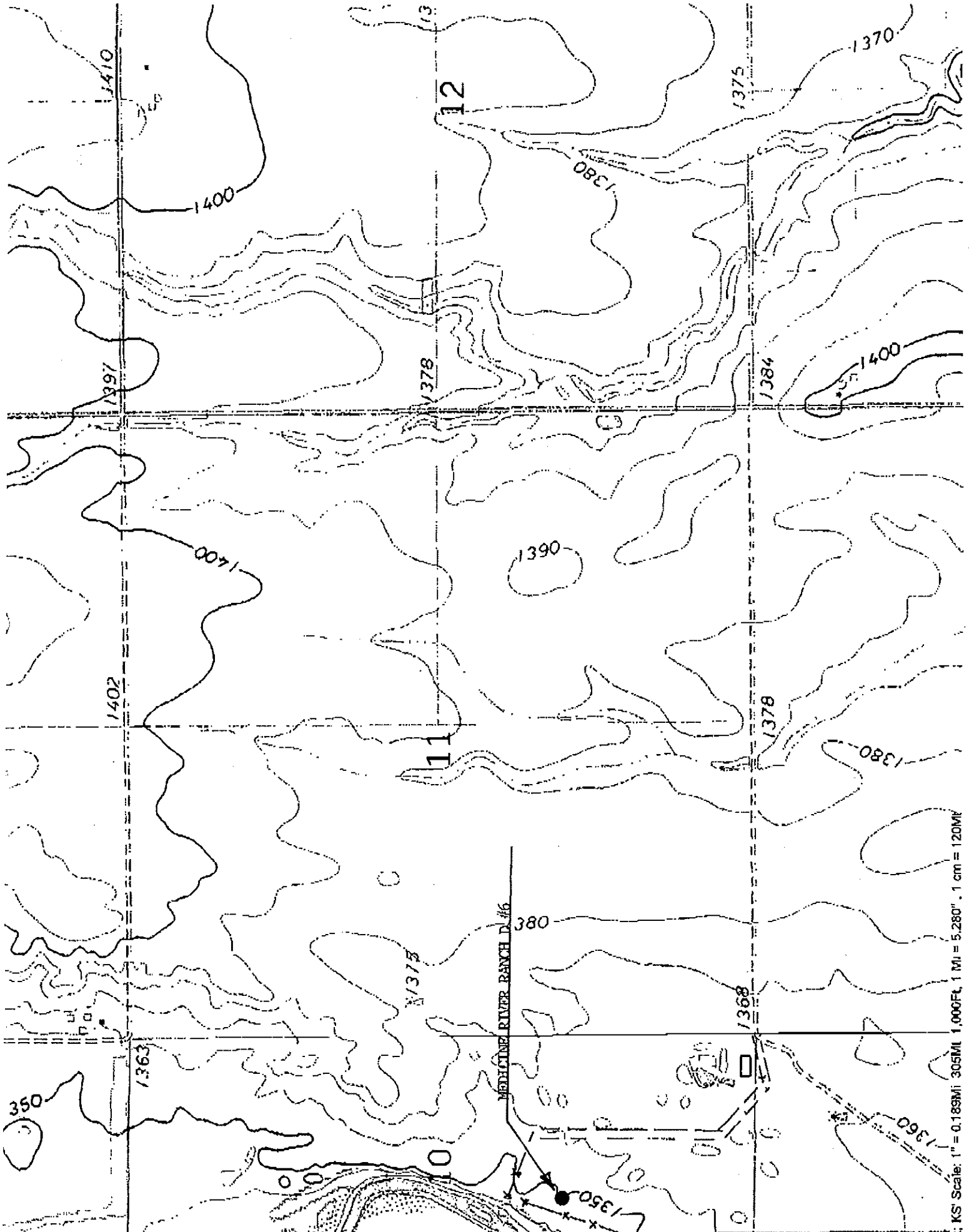


N-10 EXPLORATION LLC  
PO Box 195  
Attica, KS 67009-0195

AUTHORIZED BY: Randy Newberry

SCALE: 1" = 1000'





Kiowa, KS Scale: 1" = 0.189MI, 305M, 1,000FT, 1 MI = 5,280', 1 cm = 120MM