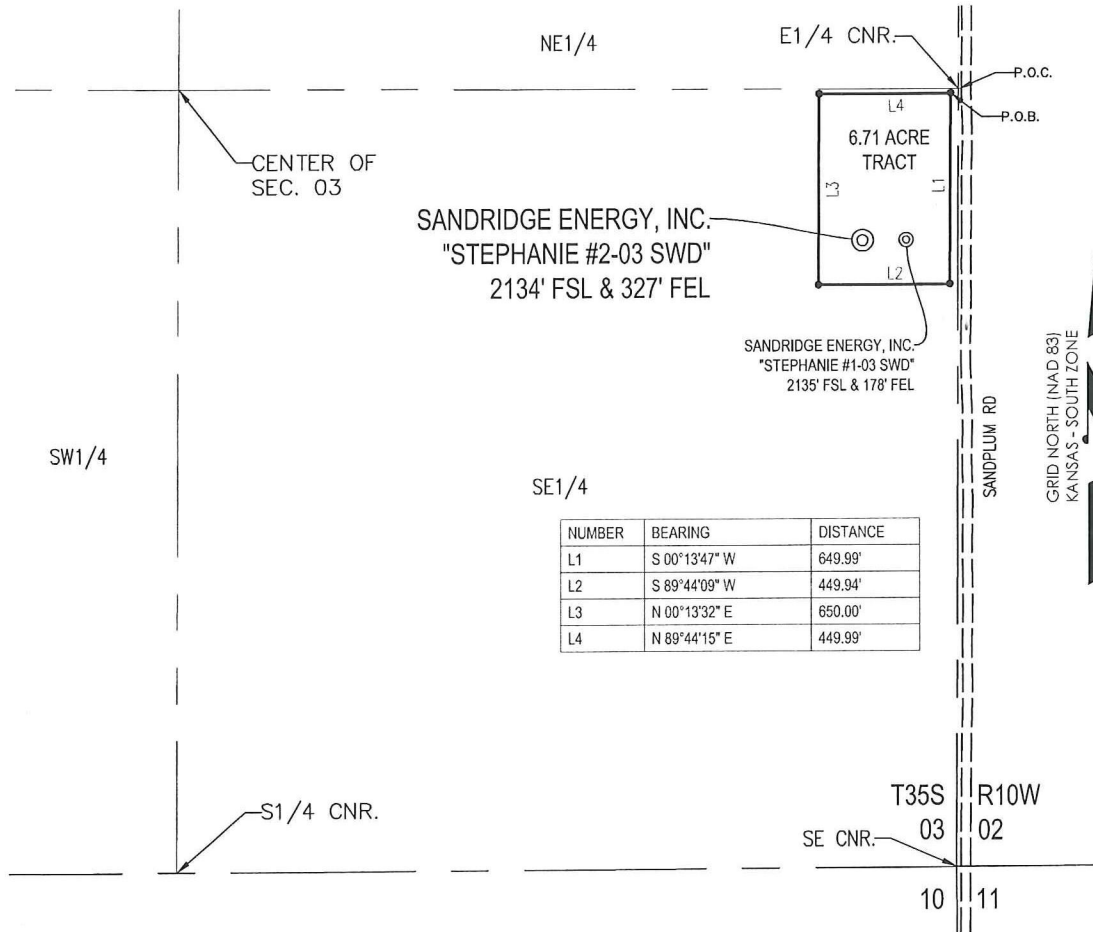


T 35 S - R 10 W



PLAT SHOWING  
**6.71 ACRE TRACT OF LAND IN THE  
 SE1/4 OF SECTION 03, T35S-R10W,  
 BARBER COUNTY, KANSAS**

**METES AND BOUNDS DESCRIPTION (6.71 ACRE TRACT)**

PART OF THE SE1/4 OF SECTION 03, TOWNSHIP 35 SOUTH, RANGE 10 WEST, BARBER COUNTY, KANSAS, MORE PARTICULARLY DESCRIBED AS FOLLOWS:

COMMENCING AT THE E1/4 CORNER OF SAID SECTION 03;  
 THENCE S 00°14'11" W ALONG THE EAST LINE OF SAID SECTION 03, A DISTANCE OF 14.19 FEET;  
 THENCE N 89°45'49" W, A DISTANCE OF 26.66 FEET TO THE POINT OF BEGINNING;  
 THENCE S 00°13'47" W, A DISTANCE OF 649.99 FEET;  
 THENCE S 89°44'09" W, A DISTANCE OF 449.94 FEET;  
 THENCE N 00°13'32" E, A DISTANCE OF 650.00 FEET;  
 THENCE N 89°44'15" E, A DISTANCE OF 449.99 FEET TO THE POINT OF BEGINNING.

SAID TRACT CONTAINING 6.71 ACRES OF LAND AS SURVEYED.

**SURVEYOR'S CERTIFICATE:**

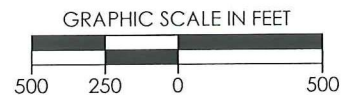
I, C. ED GRAY, KANSAS LICENSED PROFESSIONAL LAND SURVEYOR, NO. 1404, DO HEREBY CERTIFY THAT THIS PLAT REPRESENTS THE RESULTS OF A SURVEY MADE ON THE GROUND UNDER MY SUPERVISION.

**GENERAL NOTES:**

THE TIES AND FOOTAGES SHOWN ON THIS PLAT ARE FROM LINES OF OCCUPATION FROM A SURVEY MADE ON THE GROUND AND / OR BEARING AND DISTANCES FROM THE GENERAL LAND OFFICE PLAT OF THE AREA SHOWN AND MAY NOT BE THE ACTUAL PROPERTY CORNERS. THIS PLAT DOES NOT REPRESENT A TRUE BOUNDARY SURVEY.



8/8/2011



REVISION	<b>SandRidge</b>		
	"STEPHANIE #2-03 SWD" PART OF THE SE1/4 OF SECTION 03, T-35-S, R-10-W PROPOSED DRILL SITE BARBER COUNTY, KANSAS		
	SCALE: 1" = 500'	DRAWN BY: S.ANDER	SHEET NO.: 1 OF 1
	PLOT DATE: 08-08-2011		