



**TRILOBITE TESTING, INC.**

# DRILL STEM TEST REPORT

Berexco LLC

**15-9s-21w**

2020 N Bramblewood  
Wichita Ks 67206

**Benson #10**

Job Ticket: 44809

**DST#: 1**

ATTN: Bruce Meyer

Test Start: 2012.03.22 @ 23:26:58

## GENERAL INFORMATION:

Formation: **Arbuckle**

Deviated: No Whipstock: ft (KB)

Time Tool Opened: 02:54:58

Time Test Ended: 11:13:28

Test Type: Conventional Bottom Hole (Initial)

Tester: Jeff Brown

Unit No: 44

**Interval: 3652.00 ft (KB) To 3736.00 ft (KB) (TVD)**

Reference Elevations: 2255.00 ft (KB)

Total Depth: 3736.00 ft (KB) (TVD)

2243.00 ft (CF)

Hole Diameter: 7.88 inches Hole Condition: Good

KB to GR/CF: 12.00 ft

**Serial #: 8321**

**Inside**

Press @ Run Depth: 1055.01 psig @ 3720.00 ft (KB)

Capacity: 8000.00 psig

Start Date: 2012.03.22

End Date:

2012.03.23

Last Calib.:

2012.03.23

Start Time:

23:26:59

End Time:

11:13:28

Time On Btm:

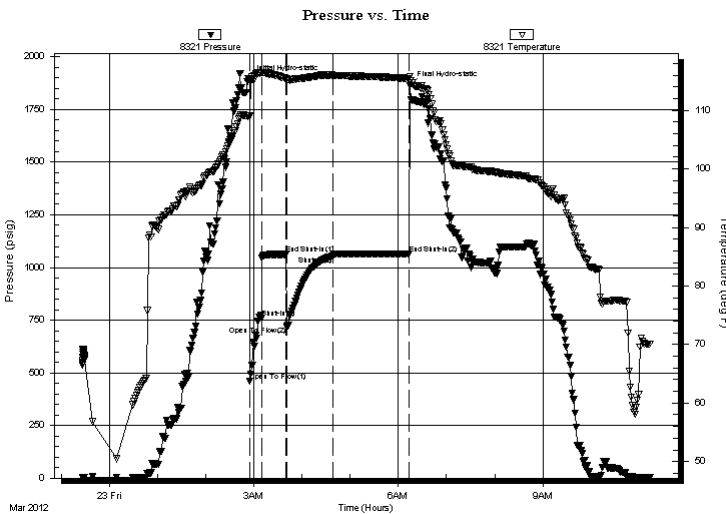
2012.03.23 @ 02:54:28

Time Off Btm:

2012.03.23 @ 06:14:28

**TEST COMMENT:** IFP-Strong blow BOB in 45 sec  
ISI-Weak surface blow back  
FFP-Strong blow BOB in 1 min  
FSI-Dead no blow back

## PRESSURE SUMMARY



Time (Min.)	Pressure (psig)	Temp (deg F)	Annotation
0	1890.81	109.15	Initial Hydro-static
1	461.68	109.00	Open To Flow (1)
15	761.20	116.43	Shut-In(1)
46	1063.11	115.47	End Shut-In(1)
47	721.98	115.35	Open To Flow (2)
105	1055.01	115.99	Shut-In(2)
199	1064.61	115.43	End Shut-In(2)
200	1864.22	115.78	Final Hydro-static

## Recovery

Length (ft)	Description	Volume (bbl)
542.00	HOCGM 10%G 25%O 65%M	2.67
194.00	SOCM 10%O 90%M	2.72
252.00	HOCM 30%O 70%M	3.53
378.00	GOCM 25%G 10%O 65%M	5.30
1134.00	GMCO 40%G 50%O 10%M	15.91

## Gas Rates

	Choke (inches)	Pressure (psig)	Gas Rate (Mcf/d)



**TRILOBITE  
TESTING, INC.**

# DRILL STEM TEST REPORT

**FLUID SUMMARY**

Berexco LLC

**15-9s-21w**

2020 N Bramblewood  
Wichita Ks 67206

**Benson #10**

Job Ticket: 44809

**DST#: 1**

ATTN: Bruce Meyer

Test Start: 2012.03.22 @ 23:26:58

## Mud and Cushion Information

Mud Type: Gel Chem

Cushion Type:

Oil API:

25 deg API

Mud Weight: 9.00 lb/gal

Cushion Length:

ft

Water Salinity:

ppm

Viscosity: 54.00 sec/qt

Cushion Volume:

bbbl

Water Loss: 7.98 in<sup>3</sup>

Gas Cushion Type:

Resistivity: ohm.m

Gas Cushion Pressure:

psig

Salinity: 1000.00 ppm

Filter Cake: inches

## Recovery Information

Recovery Table

Length ft	Description	Volume bbbl
542.00	HOCGM 10%G 25%O 65%M	2.665
194.00	SOCM 10%O 90%M	2.721
252.00	HOCM 30%O 70%M	3.535
378.00	GOCM 25%G 10%O 65%M	5.302
1134.00	GMCO 40%G 50%O 10%M	15.907

Total Length: 2500.00 ft      Total Volume: 30.130 bbl

Num Fluid Samples: 0

Num Gas Bombs: 0

Serial #:

Laboratory Name:

Laboratory Location:

Recovery Comments:

Serial #: 8321

Inside

Berexco LLC

Benson #10

DST Test Number: 1

# Pressure vs. Time

