

RPT #15-137-20605-0000

GEOLOGICAL REPORT
DRILLING TIME AND SAMPLE LOG

COMPANY <u>Baird Oil Company, LLC.</u>	ELEVATION
LEASE <u>Arlene Mulder #1-26</u>	KB <u>2275'</u>
FIELD <u>Wildcat</u>	DF <u>2273'</u>
LOCATION <u>2125' ENL + 1500' FWL</u>	GL <u>2270'</u>
SEC <u>26</u> TWSP <u>3s</u> RGE <u>21w</u>	Depths Measured From
COUNTY <u>Norton</u> STATE <u>Kansas</u>	Log <u>KB</u> Drilling <u>KB</u>
CONTRACTOR <u>WWD Drilling Rig # 8</u>	CASING
SPUD <u>4-26-12</u> COMP <u>5-1-12</u>	Surface <u>8 7/8" @ 214'</u>
SAMPLES SAVED FROM <u>3250'</u> TO <u>R.T.D.</u>	Production <u>none</u>
	ELECTRIC LOGS <u>Superior Well Services</u>

FORMATION TOPS AND STRUCTURAL POSITION

FORMATION	SAMPLE	E. LOG	DATUM	A	B	C	D
				-0-			
Anhydrite	1953	1953	+ 322	+ 337			
Base Anhydrite	1979	1978	+ 297	+ 307			
Topeka	3298	3301	- 1026	- 1021			
Heebner	3497	3499	- 1224	- 1223			
Toronto	3524	3525	- 1250	- 1251			
Lansing	3544	3545	- 1270	- 1269			
Base Kansas City	3737	3738	- 1463	- 1454			
Marmaton	3772	3774	- 1499				
Arbuckle	3812	3813	- 1538	- 1539			
Total Depth	3923	3925	- 1650	- 1575			

REFERENCE WELLS

A	Jones, Shelburne and Farmer; Reeser #1 NW-NW-SE sec. 26-3s-21w
B	
C	
D	

REMARKS

This well ran 1 foot lower on the losing top than the reference dry hole.
After reviewing all related information it was decided this well should
be plugged and abandoned.

Richard B. Bell
5/11/12

7502

LEGEND

- Anhydrite
- Salt
- Sandstone
- Shale
- Carb sh
- Limestone
- Ool. Lime
- Chert
- Dolomite

DRILLING TIME IN MINUTES
PER FOOT

Rate of Penetration Decreases



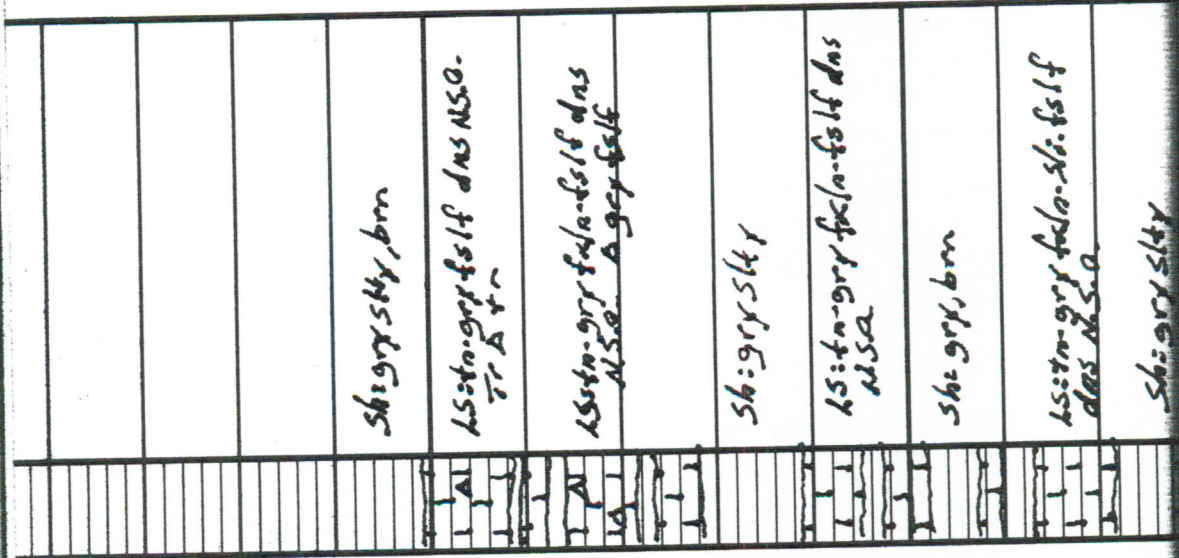
5" 10" 15" 20" 25"



DEPTH	LITHOLOGY	SAMPLE DESCRIPTIONS	OIL SHOWS	REMARKS
1950				

LOG 7710

Samples are lagged
good samples



60

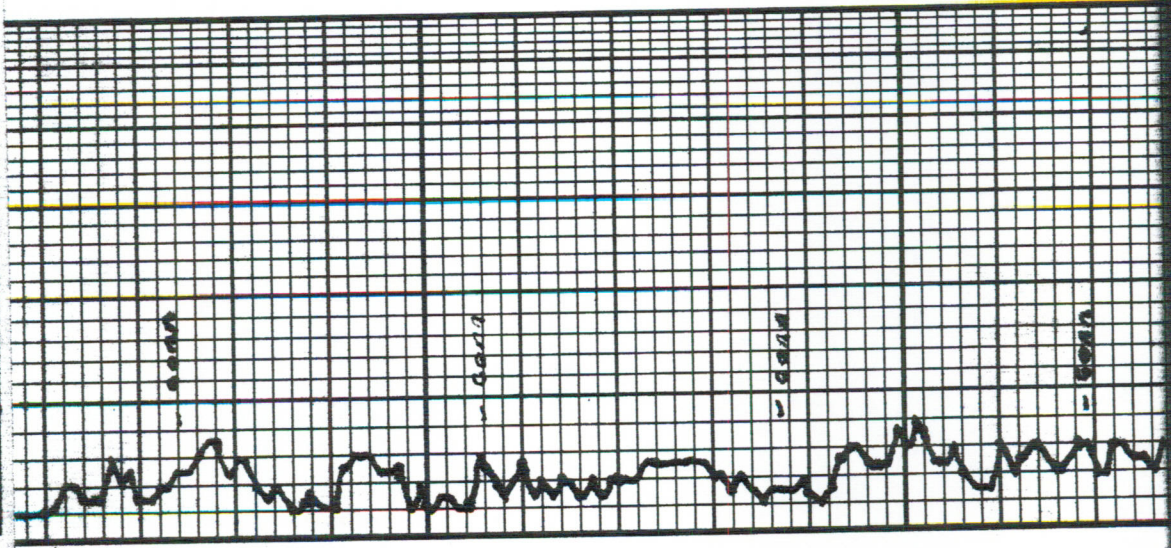
80

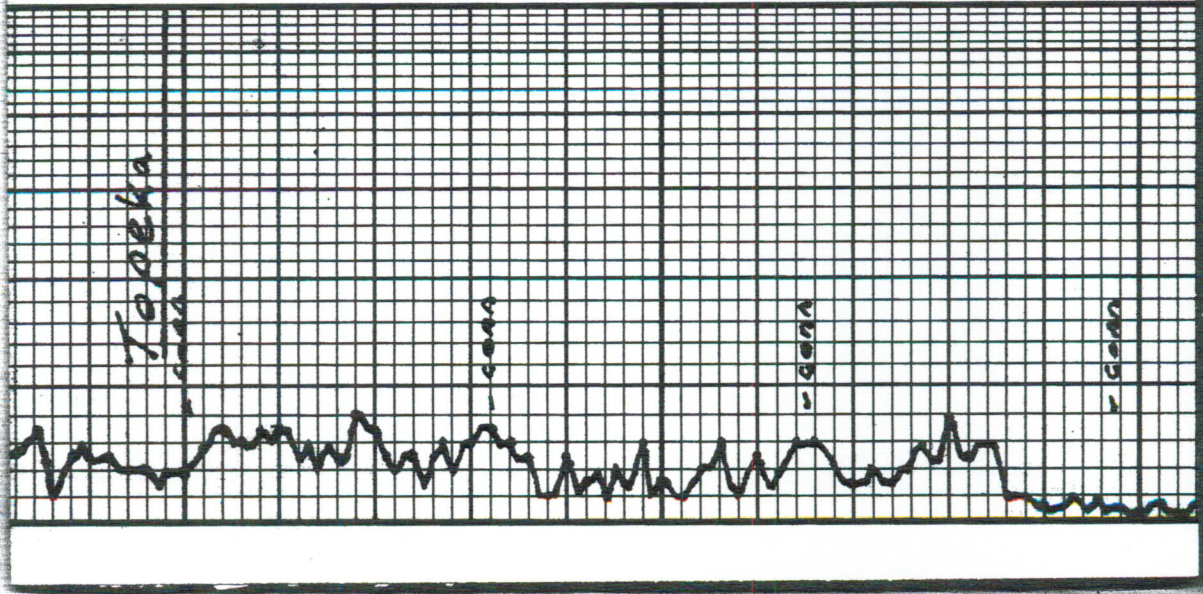
3200

20

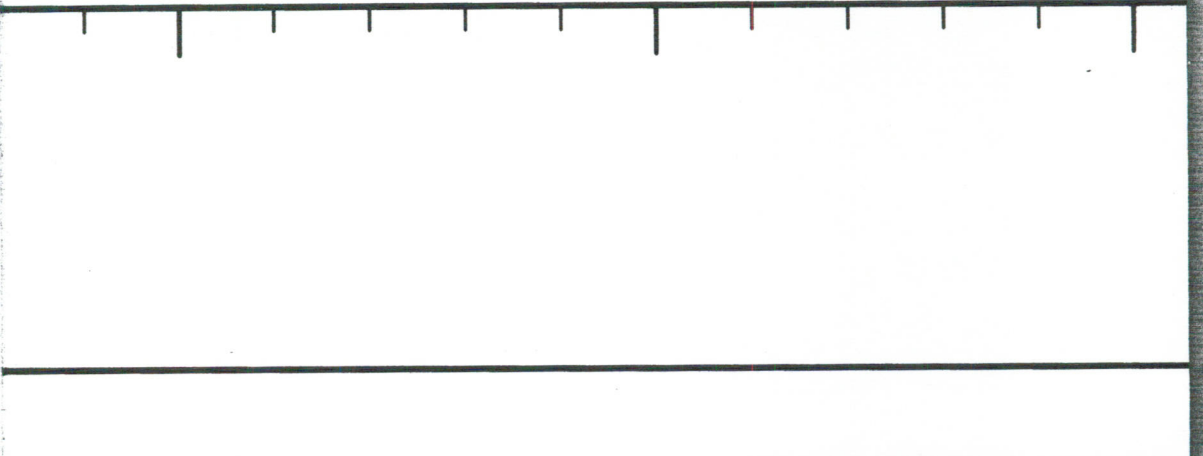
40

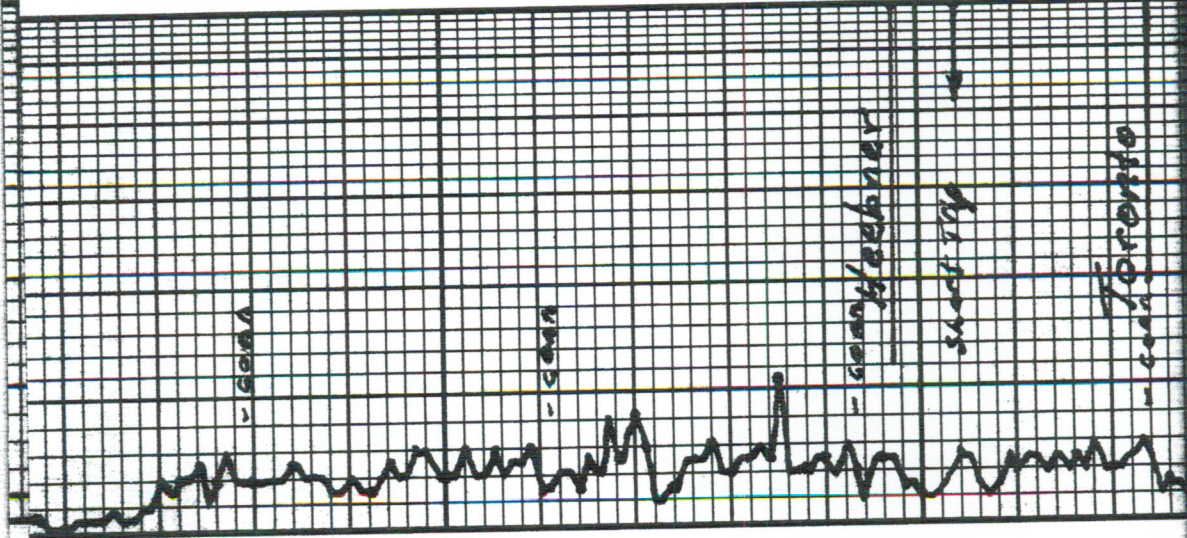
60





3300	Shlyaa	LS:wh-ta-slyaa-ctya fch-slyaa däs N.S.O.
20	Shiben	LS:wh-ta-ya-ctya-fch-tr fslf pr. pp & N.S.O.
40	V. Shlye-brasly	LS:wh-ta-ctya-fch-öl pp & N.S.O.
60	a.a.	LS:wh-ta-tr-ctya-fch öl in part & N.S.O. Ary tn-ar
80	Shibca-slyaa	LS:wh-ta-fch-tr-öl pp & N.S.O. Tr-Dtn
3400		





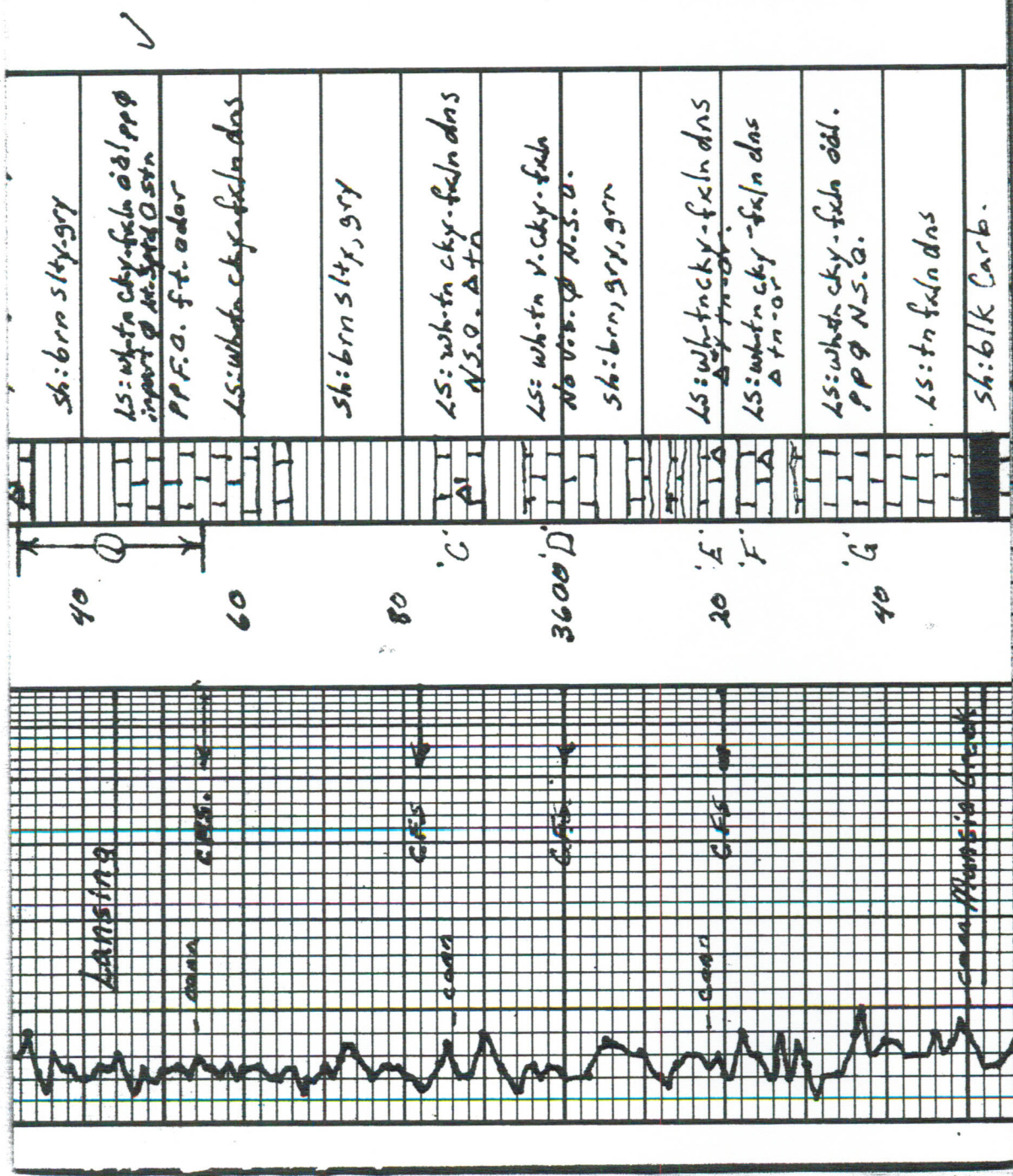
20	sh: brn slty Sdy
40	LS: wh-trn cky-fxln sli. oöl pp@ N.S.O. Tr. A grx LS: tr. yel fs/ fpr. pp@ sh: brn, grx LS: ht. grx fs/ f dms Tr. drk grx shi LS: wh-trn fxln sli. oöl pp@ N.S.O. sh: brn slty LS: wh-trn fxln Tr. oöl pp@ N.S.O. LS: wh-trn sli. cky-fxln dal pp@ N.S.O. Tr. A fn sh: blk Carb LS: tr. fs/ f dms sh: grx slty, brn, grn LS: wh-trn cky-fxln oöl
60	
80	
3500	
20	

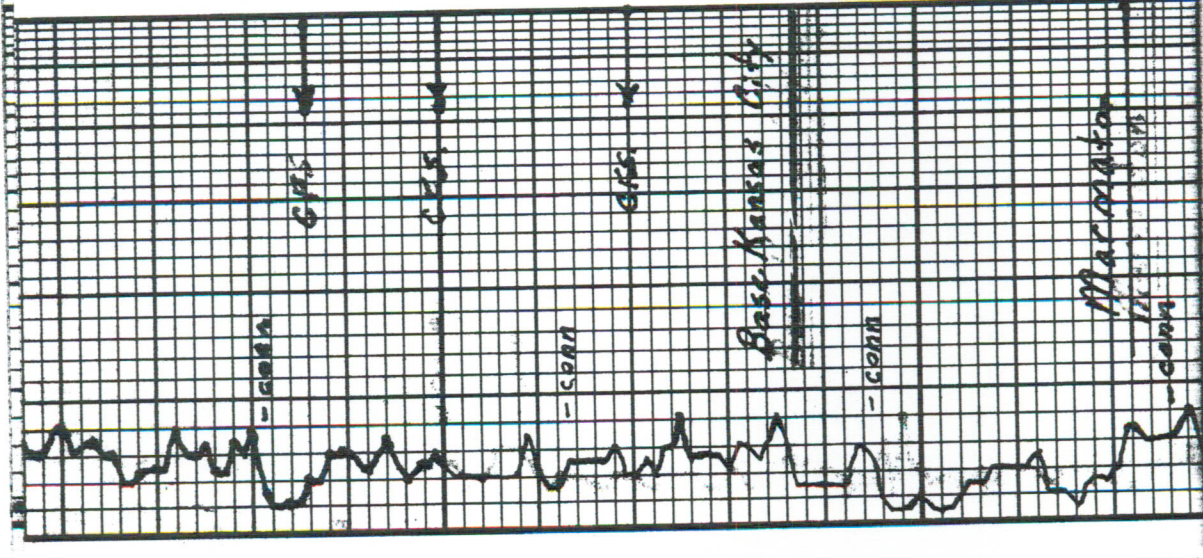
Strap 3557.09'
 Board 3554.98'
 Diff. 2.11'

Trilobite Testing

DST# 1 3532'-3555'

3-30
 IF V. wk surface blow
 flushed tool, No help
 Recovery: 10' M w/ Ospsks
 Hyd: 2167-1766#
 FP: 11-20#
 BHP: 84#
 BHTemp: 92°F.





60	Sh: grey slty
80	L.S: wh. to ls. gry fxl in dhs N.S.O
3700	Sh: brn, gry ls: ta-ye l fslf dhs. ds. o.
3700	L.S: wh. to ta. fslf cal w/ foss. inclus. PPØ fr Spid O 5 to 10. m. bow s.o. PP.F.O. No other fossils spks
20	Sh: brn, gry L.S: wh. gry cky-fslf dhs N.S.O.
40	Sh: brn, gry L.S: wh. to sl. ye l cky-fslf dhs N.S.O.
60	Sh: brn slty, gry, grn
80	Sh: a.a. L.S: wh. to cky-fslf Tr fslf dhs N.S.O.

60 'H'

80 'I'

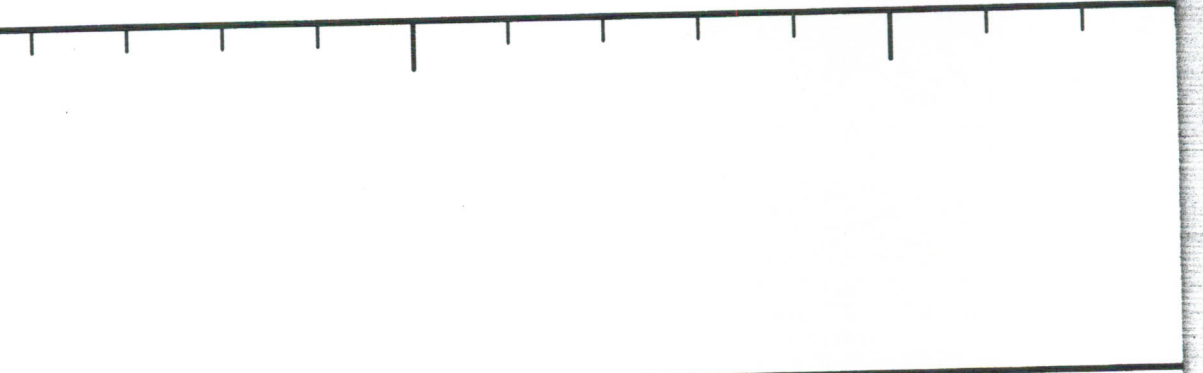
3700 'J'

20 'K'

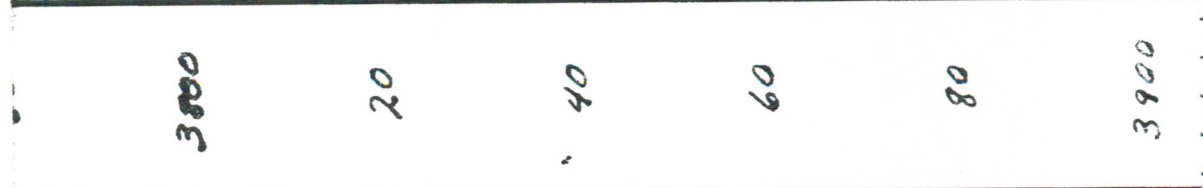
40 'L'

60

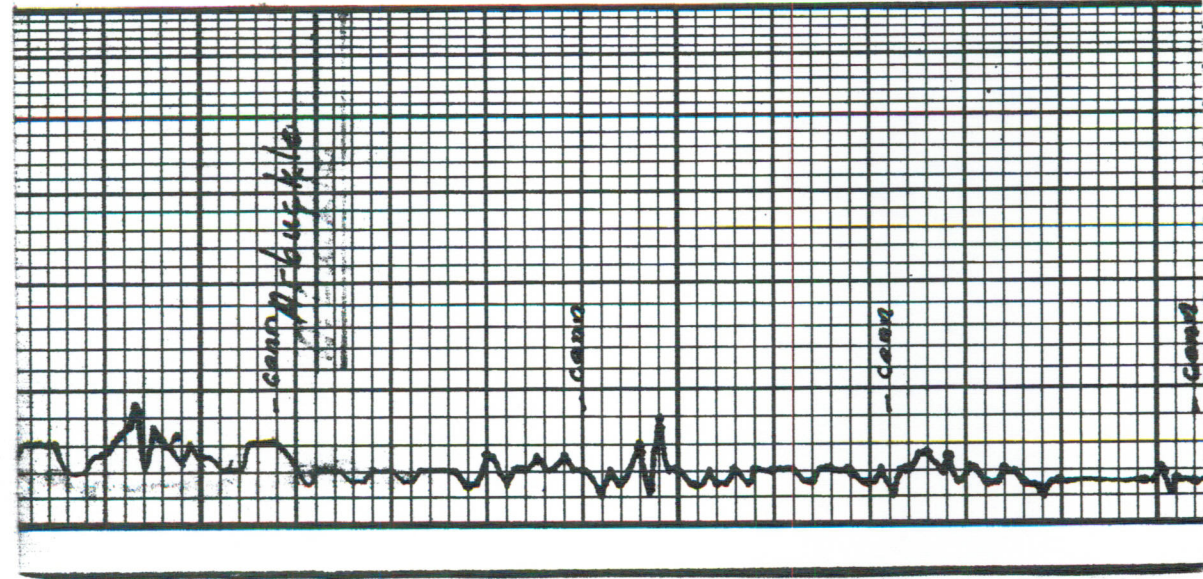
80

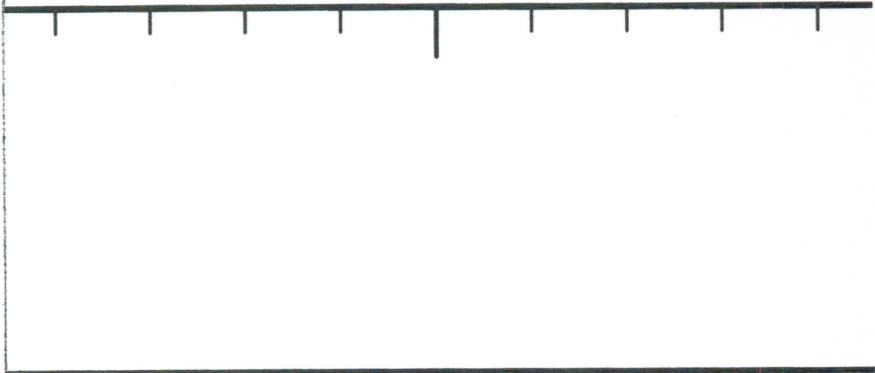


Sh: brn-sky	
15w htd cky-fch ds d.s.a.	
lsran.	
s.s. lt. gry v. fr. gn. concol.	
ingran @ N.S.O.	
Dol: wh fch incln @ N.S.O.	
Dol: wh. tp. ye. -brn fch incln @ N.S.O.	
Dol: wh. th. ye. l. brn fch incln Tr vgy @ N.S.O.	
ae. incr cky - Sh: brn	
Same	
Dol: wh. th. brn mxln incln @ Tr sli. sky N.S.O.	
Dol: a.a	



3000
20
40
60
80
3900





Blank horizontal line

<p><i>Dol: wh-tu-bm mch incl of MSR - lot of glass Spks 51:5dy</i></p>															
--	--	--	--	--	--	--	--	--	--	--	--	--	--	--	--



20

