



**TRILOBITE
TESTING, INC.**

DRILL STEM TEST REPORT

Shakespear Oil Co, Inc

21 14s 32w Logan, Ks

202 W. Main St.
Salem, IL 62881

Ottley 1-21

Job Ticket: 46679

DST#: 6

ATTN: Tim Priest

Test Start: 2012.04.04 @ 13:50:00

GENERAL INFORMATION:

Formation: **LKC " I "**
 Deviated: No Whipstock: ft (KB)
 Time Tool Opened: 15:48:30
 Time Test Ended: 20:52:45
 Interval: **3942.00 ft (KB) To 3978.00 ft (KB) (TVD)**
 Total Depth: 3942.00 ft (KB) (TVD)
 Hole Diameter: 7.88 inches Hole Condition: Good
 Test Type: Conventional Bottom Hole (Reset)
 Tester: Bradley Waler
 Unit No: 53
 Reference Elevations: 2763.00 ft (KB)
 2753.00 ft (CF)
 KB to GR/CF: 10.00 ft

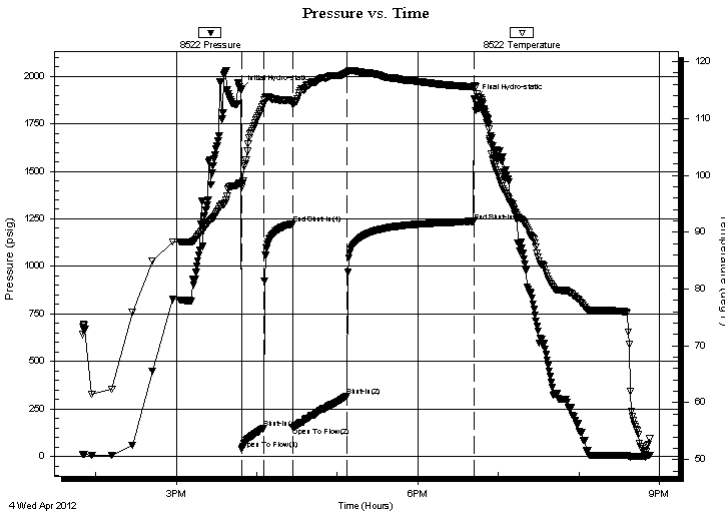
Serial #: 8522

Inside

Press @ Run Depth: 318.48 psig @ 3943.00 ft (KB) Capacity: 8000.00 psig
 Start Date: 2012.04.04 End Date: 2012.04.04 Last Calib.: 2012.04.04
 Start Time: 13:50:05 End Time: 20:52:44 Time On Btm: 2012.04.04 @ 15:48:15
 Time Off Btm: 2012.04.04 @ 18:42:15

TEST COMMENT: IF: BOB @ 6 min.
 IS: No return.
 FF: BOB @ 9 min.
 FS: No return.

PRESSURE SUMMARY



Time (Min.)	Pressure (psig)	Temp (deg F)	Annotation
0	1927.71	98.61	Initial Hydro-static
1	35.68	97.87	Open To Flow (1)
17	149.01	112.60	Shut-In(1)
39	1224.41	112.91	End Shut-In(1)
39	151.45	112.48	Open To Flow (2)
79	318.48	117.99	Shut-In(2)
174	1236.10	115.55	End Shut-In(2)
174	1882.42	115.77	Final Hydro-static

Recovery

Length (ft)	Description	Volume (bbl)
430.00	mcw 10m 90w (oil spots)	3.66
215.00	omcw 3o 30m 67w	2.14
10.00	oil 100o	0.10

* Recovery from multiple tests

Gas Rates

Choke (inches)	Pressure (psig)	Gas Rate (Mcf/d)



**TRILOBITE
TESTING, INC.**

DRILL STEM TEST REPORT

FLUID SUMMARY

Shakespear Oil Co, Inc

21 14s 32w Logan, Ks

202 W. Main St.
Salem, IL 62881

Ottley 1-21

Job Ticket: 46679

DST#: 6

ATTN: Tim Priest

Test Start: 2012.04.04 @ 13:50:00

Mud and Cushion Information

Mud Type: Gel Chem

Cushion Type:

Oil API:

0 deg API

Mud Weight: 9.00 lb/gal

Cushion Length:

ft

Water Salinity:

68000 ppm

Viscosity: 52.00 sec/qt

Cushion Volume:

bbbl

Water Loss: 9.59 in³

Gas Cushion Type:

Resistivity: ohm.m

Gas Cushion Pressure:

psig

Salinity: 5000.00 ppm

Filter Cake: 1.00 inches

Recovery Information

Recovery Table

Length ft	Description	Volume bbl
430.00	mcw 10m 90w (oil spots)	3.659
215.00	omcw 3o 30m 67w	2.139
10.00	oil 100o	0.099

Total Length: 655.00 ft Total Volume: 5.897 bbl

Num Fluid Samples: 0

Num Gas Bombs: 0

Serial #:

Laboratory Name:

Laboratory Location:

Recovery Comments: rw is .150 @ 55F =68000

Serial #: 8522

Inside

Shakespeare Oil Co, Inc

Ottley 1-21

DST Test Number: 6

Pressure vs. Time

