



**TRILOBITE
TESTING, INC.**

DRILL STEM TEST REPORT

Shakespear Oil Co, Inc

21 14s 32w Logan, Ks

202 W. Main St.
Salem, IL 62881

Ottley 1-21

Job Ticket: 46680

DST#: 7

ATTN: Tim Priest

Test Start: 2012.04.05 @ 08:41:00

GENERAL INFORMATION:

Formation: **LKC "K"**

Deviated: No Whipstock: ft (KB)

Time Tool Opened: 10:46:00

Time Test Ended: 15:27:30

Test Type: Conventional Bottom Hole (Reset)

Tester: Bradley Waler

Unit No: 53

Interval: 4003.00 ft (KB) To 4030.00 ft (KB) (TVD)

Reference Elevations: 2763.00 ft (KB)

Total Depth: 4030.00 ft (KB) (TVD)

2753.00 ft (CF)

Hole Diameter: 7.88 inches Hole Condition: Good

KB to GR/CF: 10.00 ft

Serial #: 8522

Inside

Press @ Run Depth: 366.21 psig @ 4004.00 ft (KB)

Capacity: 8000.00 psig

Start Date: 2012.04.05

End Date:

2012.04.05

Last Calib.:

2012.04.05

Start Time: 08:41:05

End Time:

15:27:29

Time On Btm:

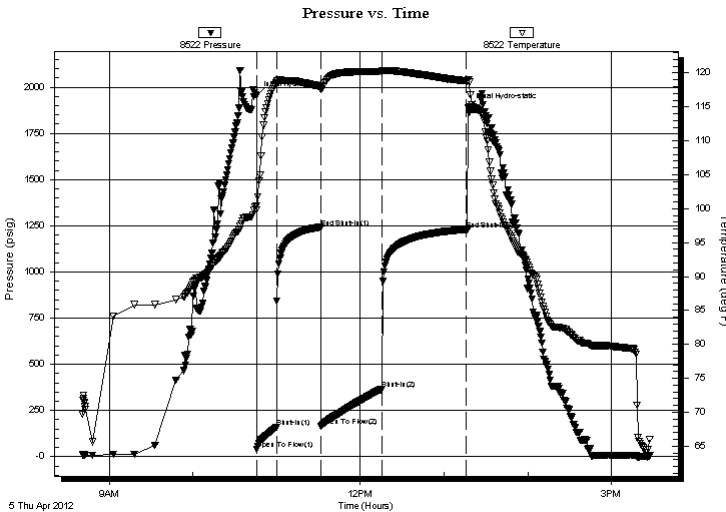
2012.04.05 @ 10:45:45

Time Off Btm:

2012.04.05 @ 13:17:30

TEST COMMENT: IF: BOB @ 5 min.
IS: No return.
FF: BOB @ 9 min.
FS: Surface blow.

PRESSURE SUMMARY



Time (Min.)	Pressure (psig)	Temp (deg F)	Annotation
0	1955.70	100.43	Initial Hydro-static
1	40.79	99.79	Open To Flow (1)
15	160.08	118.53	Shut-In(1)
46	1239.38	117.98	End Shut-In(1)
46	164.62	117.59	Open To Flow (2)
90	366.21	120.17	Shut-In(2)
151	1230.06	118.86	End Shut-In(2)
152	1889.47	119.02	Final Hydro-static

Recovery

Length (ft)	Description	Volume (bbl)
730.00	mcw 5m 95w (oil spots)	6.64
100.00	omcw 5o 25m 70w	0.99
10.00	oil 100o	0.10

* Recovery from multiple tests

Gas Rates

Choke (inches)	Pressure (psig)	Gas Rate (Mcf/d)



**TRILOBITE
TESTING, INC.**

DRILL STEM TEST REPORT

FLUID SUMMARY

Shakespear Oil Co, Inc

21 14s 32w Logan, Ks

202 W. Main St.
Salem, IL 62881

Ottley 1-21

Job Ticket: 46680

DST#: 7

ATTN: Tim Priest

Test Start: 2012.04.05 @ 08:41:00

Mud and Cushion Information

Mud Type: Gel Chem

Cushion Type:

Oil API:

0 deg API

Mud Weight: 9.00 lb/gal

Cushion Length:

ft

Water Salinity:

93000 ppm

Viscosity: 52.00 sec/qt

Cushion Volume:

bbbl

Water Loss: 7.20 in³

Gas Cushion Type:

Resistivity: ohm.m

Gas Cushion Pressure:

psig

Salinity: 4800.00 ppm

Filter Cake: 1.00 inches

Recovery Information

Recovery Table

Length ft	Description	Volume bbl
730.00	mcw 5m 95w (oil spots)	6.643
100.00	omcw 5o 25m 70w	0.995
10.00	oil 100o	0.099

Total Length: 840.00 ft Total Volume: 7.737 bbl

Num Fluid Samples: 0

Num Gas Bombs: 0

Serial #:

Laboratory Name:

Laboratory Location:

Recovery Comments: rw is .105 @ 63 = 93,000 ppm

Serial #: 8522

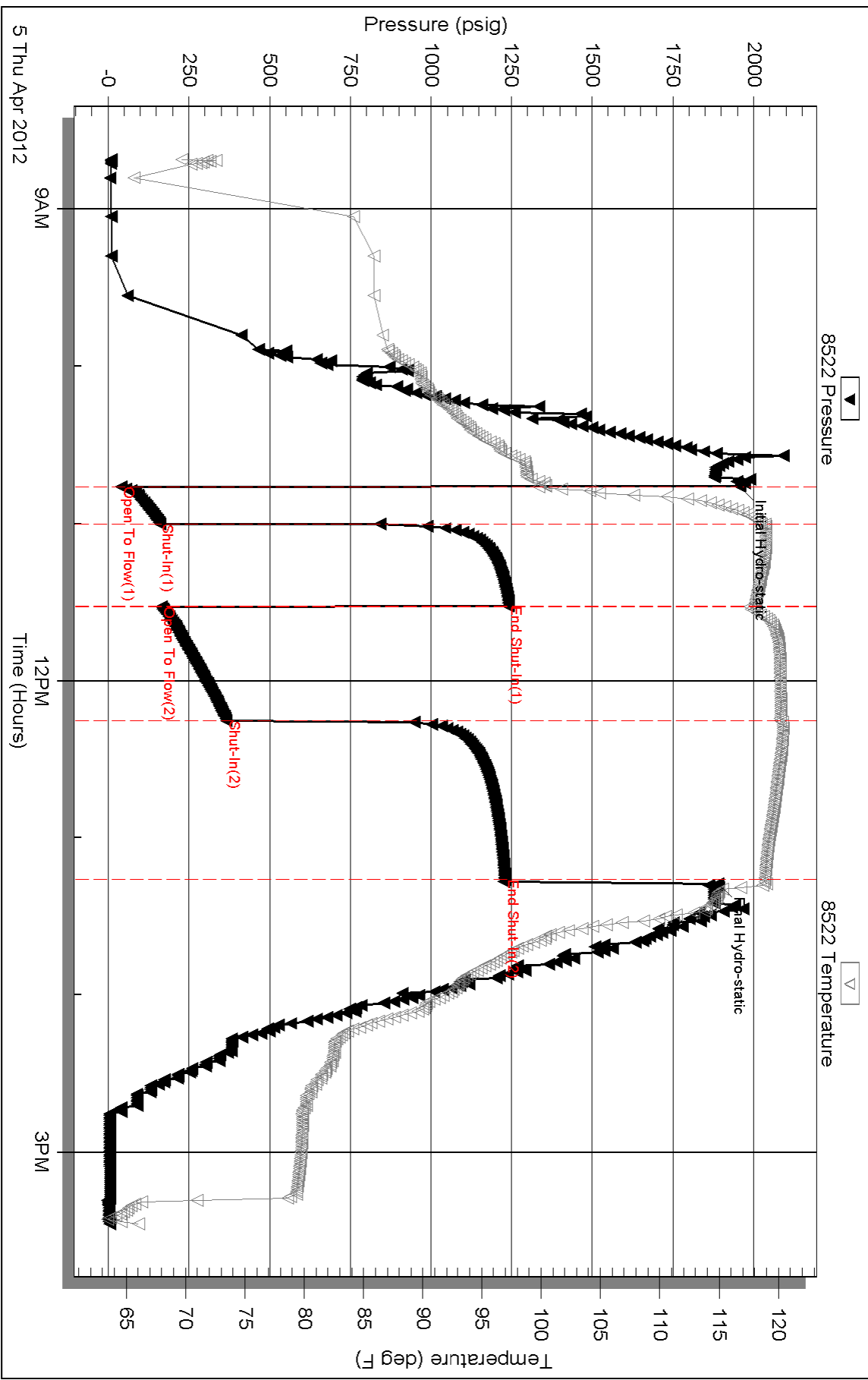
Inside

Shakespeare Oil Co, Inc

Ottley 1-21

DST Test Number: 7

Pressure vs. Time



Triobite Testing, Inc

Ref. No: 46680

Printed: 2012.04.05 @ 16:11:26