



TRILOBITE TESTING, INC.

DRILL STEM TEST REPORT

Shakespear Oil Co, Inc

21 14s 32w Logan, Ks

202 W. Main St.
Salem, IL 62881

Ottley 1-21

Job Ticket: 46681

DST#: 8

ATTN: Tim Priest

Test Start: 2012.04.06 @ 18:36:00

GENERAL INFORMATION:

Formation: **Pawnee - Myric Stati**

Deviated: No Whipstock: ft (KB)

Time Tool Opened: 20:14:00

Time Test Ended: 01:32:30

Test Type: Conventional Bottom Hole (Reset)

Tester: Bradley Waler

Unit No: 53

Interval: 4187.00 ft (KB) To 4260.00 ft (KB) (TVD)

Reference Elevations: 2763.00 ft (KB)

Total Depth: 4260.00 ft (KB) (TVD)

2753.00 ft (CF)

Hole Diameter: 7.88 inches Hole Condition: Good

KB to GR/CF: 10.00 ft

Serial #: 8522 Inside

Press @ Run Depth: 85.74 psig @ 4188.00 ft (KB)

Capacity: 8000.00 psig

Start Date: 2012.04.06

End Date:

2012.04.07

Last Calib.: 2012.04.07

Start Time: 18:36:05

End Time:

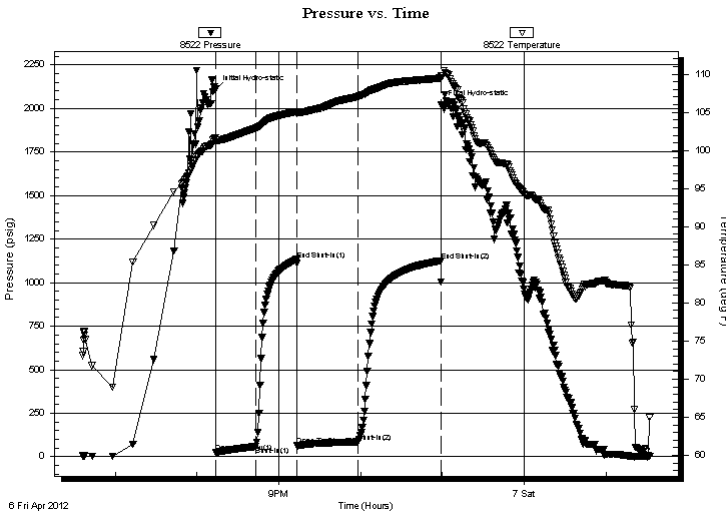
01:32:29

Time On Btm: 2012.04.06 @ 20:13:45

Time Off Btm: 2012.04.06 @ 22:59:15

TEST COMMENT: IF: 3 1/2" blow.
IS: No return.
FF: 2 1/2" blow.
FS: No return.

PRESSURE SUMMARY



| Time (Min.) | Pressure (psig) | Temp (deg F) | Annotation |
|-------------|-----------------|--------------|----------------------|
| 0 | 2110.25 | 101.67 | Initial Hydro-static |
| 1 | 24.48 | 101.11 | Open To Flow (1) |
| 29 | 58.82 | 102.90 | Shut-In(1) |
| 60 | 1133.07 | 105.12 | End Shut-In(1) |
| 60 | 63.65 | 104.87 | Open To Flow (2) |
| 105 | 85.74 | 107.08 | Shut-In(2) |
| 165 | 1126.34 | 109.49 | End Shut-In(2) |
| 166 | 2024.35 | 109.82 | Final Hydro-static |

Recovery

| Length (ft) | Description | Volume (bbl) |
|-------------|-------------|--------------|
| 140.00 | socm 2o 98m | 0.77 |
| | | |
| | | |
| | | |
| | | |

* Recovery from multiple tests

Gas Rates

| | Choke (inches) | Pressure (psig) | Gas Rate (Mcf/d) |
|--|----------------|-----------------|------------------|
| | | | |



**TRILOBITE
TESTING, INC.**

DRILL STEM TEST REPORT

FLUID SUMMARY

Shakespear Oil Co, Inc

21 14s 32w Logan, Ks

202 W. Main St.
Salem, IL 62881

Ottley 1-21

Job Ticket: 46681

DST#: 8

ATTN: Tim Priest

Test Start: 2012.04.06 @ 18:36:00

Mud and Cushion Information

Mud Type: Gel Chem

Cushion Type:

Oil API:

0 deg API

Mud Weight: 9.00 lb/gal

Cushion Length:

ft

Water Salinity:

0 ppm

Viscosity: 55.00 sec/qt

Cushion Volume:

bbbl

Water Loss: 7.60 in³

Gas Cushion Type:

Resistivity: ohm.m

Gas Cushion Pressure:

psig

Salinity: 5000.00 ppm

Filter Cake: 1.00 inches

Recovery Information

Recovery Table

| Length ft | Description | Volume bbl |
|--------------|-------------|---------------|
| 140.00 | socm 2o 98m | 0.774 |

Total Length: 140.00 ft Total Volume: 0.774 bbl

Num Fluid Samples: 0

Num Gas Bombs: 0

Serial #:

Laboratory Name:

Laboratory Location:

Recovery Comments:

Serial #: 8522

Inside

Shakespeare Oil Co, Inc

Oilley 1-21

DST Test Number: 8

