



**TRILOBITE  
TESTING, INC.**

# DRILL STEM TEST REPORT

Shakespear Oil Co, Inc

**21 14s 32w Logan, Ks**

202 W. Main St.  
Salem, IL 62881

**Ottley 1-21**

Job Ticket: 46683

**DST#: 10**

ATTN: Tim Priest

Test Start: 2012.04.08 @ 13:20:05

## GENERAL INFORMATION:

Formation: **Johnson**

Deviated: No Whipstock: 0.00 ft (KB)

Time Tool Opened: 15:05:45

Time Test Ended: 20:32:29

Test Type: Conventional Bottom Hole (Reset)

Tester: Cole Archibald

Unit No: 53

**Interval: 4298.00 ft (KB) To 4363.00 ft (KB) (TVD)**

Reference Elevations: 2763.00 ft (KB)

Total Depth: 4363.00 ft (KB) (TVD)

2753.00 ft (CF)

Hole Diameter: 7.88 inches Hole Condition: Fair

KB to GR/CF: 10.00 ft

**Serial #: 8678**

**Inside**

Press @ Run Depth: 151.44 psig @ 4299.00 ft (KB)

Capacity: 8000.00 psig

Start Date: 2012.04.08

End Date:

2012.04.08

Last Calib.:

2012.04.08

Start Time:

13:20:05

End Time:

20:32:29

Time On Btm:

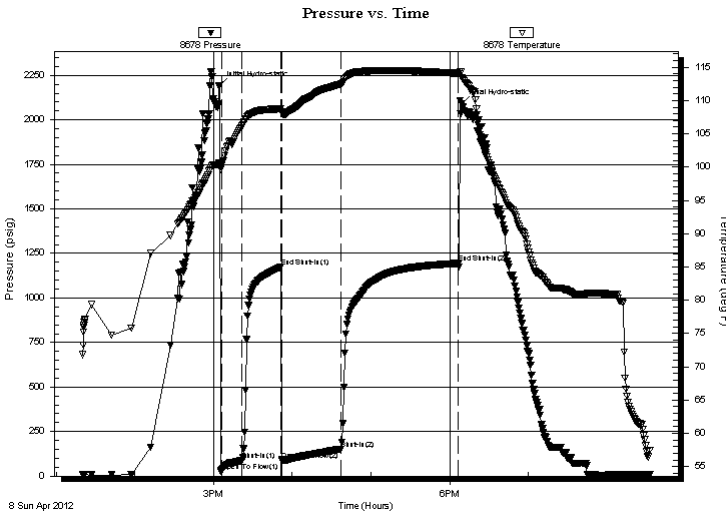
2012.04.08 @ 15:04:15

Time Off Btm:

2012.04.08 @ 18:09:14

**TEST COMMENT:** B,O,B 11 min  
1/4 surface blow  
B,O,B 8 min  
1/4 surface blow

## PRESSURE SUMMARY



Time (Min.)	Pressure (psig)	Temp (deg F)	Annotation
0	2193.09	100.60	Initial Hydro-static
2	29.82	100.25	Open To Flow (1)
18	89.71	106.26	Shut-In(1)
47	1174.92	108.74	End Shut-In(1)
48	89.53	108.13	Open To Flow (2)
93	151.44	112.49	Shut-In(2)
183	1194.72	114.09	End Shut-In(2)
185	2089.38	113.42	Final Hydro-static

## Recovery

Length (ft)	Description	Volume (bbl)
0.00	240 ft gip	0.00
240.00	OGM 20%O 30%G 50%M	1.77
220.00	GO 5%G 95%O	2.19

## Gas Rates

	Choke (inches)	Pressure (psig)	Gas Rate (Mcf/d)

\* Recovery from multiple tests



**TRILOBITE  
TESTING, INC.**

# DRILL STEM TEST REPORT

**FLUID SUMMARY**

Shakespear Oil Co, Inc

**21 14s 32w Logan, Ks**

202 W. Main St.  
Salem, IL 62881

**Ottley 1-21**

Job Ticket: 46683

**DST#: 10**

ATTN: Tim Priest

Test Start: 2012.04.08 @ 13:20:05

## Mud and Cushion Information

Mud Type: Gel Chem

Cushion Type:

Oil API:

29 deg API

Mud Weight: 9.00 lb/gal

Cushion Length:

ft

Water Salinity:

ppm

Viscosity: 45.00 sec/qt

Cushion Volume:

bbbl

Water Loss: 9.58 in<sup>3</sup>

Gas Cushion Type:

Resistivity: ohm.m

Gas Cushion Pressure:

psig

Salinity: 5500.00 ppm

Filter Cake: 1.00 inches

## Recovery Information

Recovery Table

Length ft	Description	Volume bbl
0.00	240 ft gip	0.000
240.00	OGM 20%O 30%G 50%M	1.769
220.00	GO 5%G 95%O	2.188

Total Length: 460.00 ft      Total Volume: 3.957 bbl

Num Fluid Samples: 0

Num Gas Bombs: 0

Serial #:

Laboratory Name:

Laboratory Location:

Recovery Comments:

Serial #: 8678

Inside

Shakespeare Oil Co, Inc

Ottley 1-21

DST Test Number: 10

