



**TRILOBITE TESTING, INC.**

# DRILL STEM TEST REPORT

Caerus Kansas LLC

**31 17s 13w Barton**

P. O. Box 1378  
Hays KS 67601

**Mortimer 31-32**

Job Ticket: 47366

**DST#: 1**

ATTN: Jeff Lawler

Test Start: 2012.04.23 @ 01:50:00

## GENERAL INFORMATION:

Formation: **LKC "DE & F"**

Deviated: No Whipstock: 1864.00 ft (KB)

Time Tool Opened: 04:51:30

Time Test Ended: 08:58:00

Test Type: Conventional Bottom Hole (Initial)

Tester: Jim Svaty

Unit No: 42

**Interval: 3162.00 ft (KB) To 3198.00 ft (KB) (TVD)**

Reference Elevations: 1864.00 ft (KB)

Total Depth: 3198.00 ft (KB) (TVD)

1851.00 ft (CF)

Hole Diameter: 7.88 inches Hole Condition: Fair

KB to GR/CF: 13.00 ft

**Serial #: 8700 Outside**

Press @ Run Depth: 13.17 psig @ 3165.00 ft (KB)

Capacity: 8000.00 psig

Start Date: 2012.04.23

End Date:

2012.04.23

Last Calib.:

2012.04.23

Start Time: 01:50:05

End Time:

08:57:59

Time On Btm:

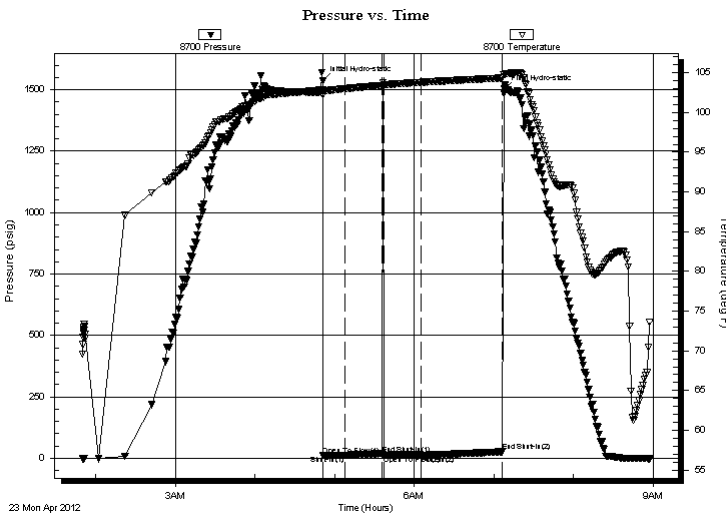
2012.04.23 @ 04:51:00

Time Off Btm:

2012.04.23 @ 07:08:00

**TEST COMMENT:** 15-IFP- No Blow  
30-ISIP- No Blow  
30-FFP- No Blow  
60-FSIP- No Blow

## PRESSURE SUMMARY



Time (Min.)	Pressure (psig)	Temp (deg F)	Annotation
0	1535.18	102.88	Initial Hydro-static
1	12.87	102.22	Open To Flow (1)
17	12.87	103.00	Shut-In(1)
45	18.32	103.40	End Shut-In(1)
47	13.69	103.38	Open To Flow (2)
75	13.17	103.81	Shut-In(2)
136	26.83	104.34	End Shut-In(2)
137	1501.69	104.77	Final Hydro-static

## Recovery

## Gas Rates

Length (ft)	Description	Volume (bbl)
0.00	No Fluid	0.00

	Choke (inches)	Pressure (psig)	Gas Rate (Mcf/d)



**TRILOBITE  
TESTING, INC.**

# DRILL STEM TEST REPORT

**FLUID SUMMARY**

Caerus Kansas LLC

**31 17s 13w Barton**

P. O. Box 1378  
Hays KS 67601

**Mortimer 31-32**

Job Ticket: 47366

**DST#: 1**

ATTN: Jeff Lawler

Test Start: 2012.04.23 @ 01:50:00

## Mud and Cushion Information

Mud Type: Gel Chem

Cushion Type:

Oil API:

deg API

Mud Weight: 9.00 lb/gal

Cushion Length:

ft

Water Salinity:

ppm

Viscosity: 49.00 sec/qt

Cushion Volume:

bbbl

Water Loss: 8.76 in<sup>3</sup>

Gas Cushion Type:

Resistivity: ohm.m

Gas Cushion Pressure:

psig

Salinity: 4000.00 ppm

Filter Cake: inches

## Recovery Information

Recovery Table

Length ft	Description	Volume bbl
0.00	No Fluid	0.000

Total Length: ft Total Volume: bbl

Num Fluid Samples: 0

Num Gas Bombs: 0

Serial #:

Laboratory Name:

Laboratory Location:

Recovery Comments:

