



**TRILOBITE TESTING, INC.**

# DRILL STEM TEST REPORT

Caerus Kansas LLC

**31 17s 13w Barton**

P. O. Box 1378  
Hays KS 67601

**Mortimer 31-32**

Job Ticket: 47367

**DST#: 2**

ATTN: Jeff Lawler

Test Start: 2012.04.23 @ 19:00:00

## GENERAL INFORMATION:

Formation: **LKC " H "**

Deviated: No Whipstock: 1864.00 ft (KB)

Time Tool Opened: 20:55:30

Time Test Ended: 02:53:30

Test Type: Conventional Bottom Hole (Reset)

Tester: Jim Svaty

Unit No: 42

**Interval: 3252.00 ft (KB) To 3280.00 ft (KB) (TVD)**

Reference Elevations: 1864.00 ft (KB)

Total Depth: 3280.00 ft (KB) (TVD)

1851.00 ft (CF)

Hole Diameter: 7.88 inches Hole Condition: Fair

KB to GR/CF: 13.00 ft

**Serial #: 8700 Outside**

Press @ Run Depth: 13.87 psig @ 3253.00 ft (KB)

Capacity: 8000.00 psig

Start Date: 2012.04.23

End Date:

2012.04.24

Last Calib.:

2012.04.24

Start Time: 19:00:05

End Time:

02:53:29

Time On Btm:

2012.04.23 @ 20:55:00

Time Off Btm:

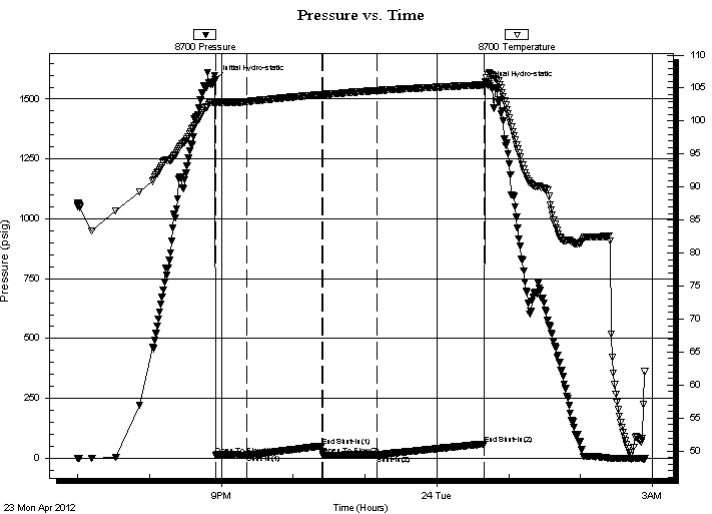
2012.04.24 @ 00:40:30

**TEST COMMENT:** 30-IFP- Surface Blow Died in 12 min

60-ISIP- No Blow

45-FFP- No Blow

90-FSIP- No Blow



## PRESSURE SUMMARY

Time (Min.)	Pressure (psig)	Temp (deg F)	Annotation
0	1581.59	102.92	Initial Hydro-static
1	12.64	102.59	Open To Flow (1)
27	13.96	102.95	Shut-In(1)
89	50.81	104.00	End Shut-In(1)
90	10.64	104.00	Open To Flow (2)
135	13.87	104.62	Shut-In(2)
225	59.38	105.48	End Shut-In(2)
226	1557.31	105.99	Final Hydro-static

## Recovery

Length (ft)	Description	Volume (bbl)
5.00	SLOCM 1% @ 99% m	0.07

\* Recovery from multiple tests

## Gas Rates

Choke (inches)	Pressure (psig)	Gas Rate (Mcf/d)



**TRILOBITE  
TESTING, INC.**

# DRILL STEM TEST REPORT

**FLUID SUMMARY**

Caerus Kansas LLC

**31 17s 13w Barton**

P. O. Box 1378  
Hays KS 67601

**Mortimer 31-32**

Job Ticket: 47367

**DST#: 2**

ATTN: Jeff Lawler

Test Start: 2012.04.23 @ 19:00:00

## Mud and Cushion Information

Mud Type: Gel Chem

Cushion Type:

Oil API:

deg API

Mud Weight: 9.00 lb/gal

Cushion Length:

ft

Water Salinity:

ppm

Viscosity: 48.00 sec/qt

Cushion Volume:

bbbl

Water Loss: 7.95 in<sup>3</sup>

Gas Cushion Type:

Resistivity: ohm.m

Gas Cushion Pressure:

psig

Salinity: 2000.00 ppm

Filter Cake: inches

## Recovery Information

Recovery Table

Length ft	Description	Volume bbbl
5.00	SLOCM 1%o 99%m	0.070

Total Length: 5.00 ft      Total Volume: 0.070 bbl

Num Fluid Samples: 0

Num Gas Bombs: 0

Serial #:

Laboratory Name:

Laboratory Location:

Recovery Comments:

