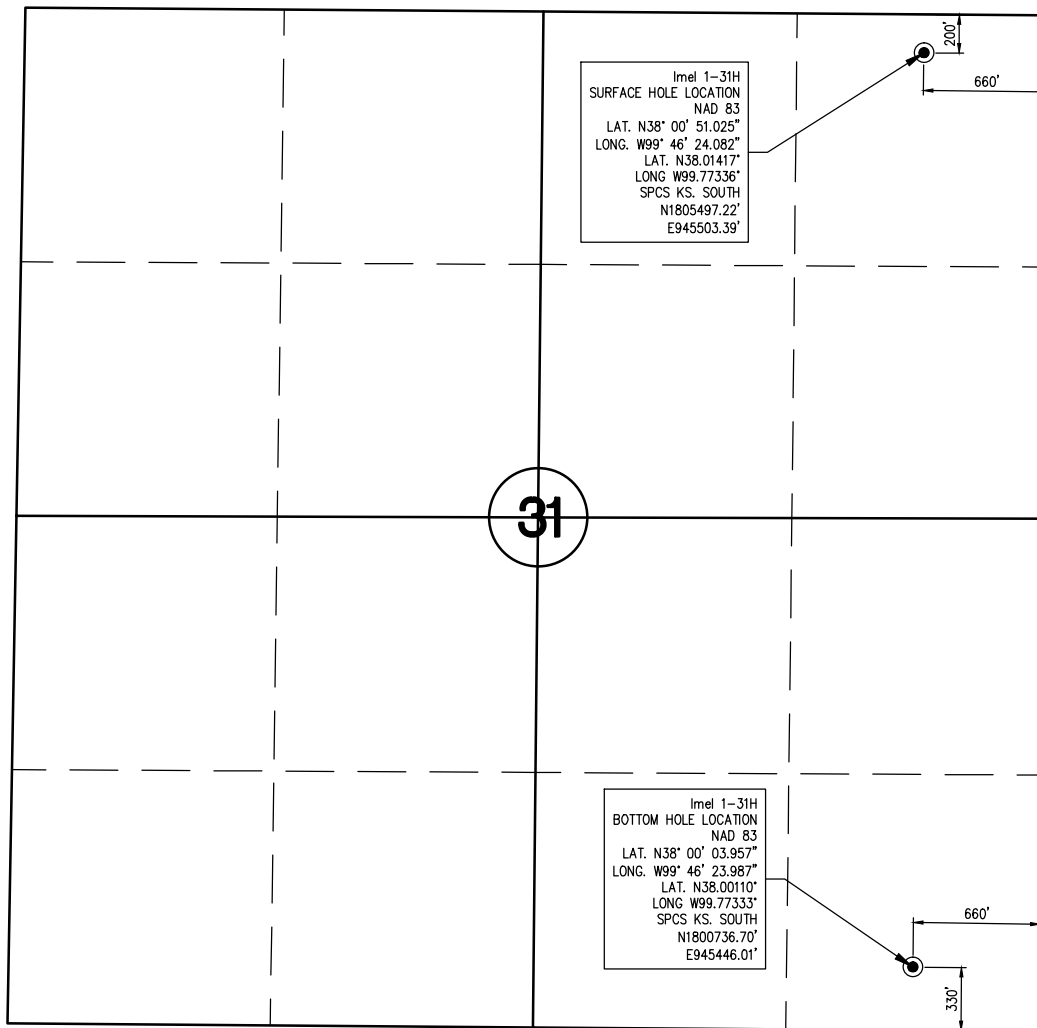


**WELL STAKE-OUT SURVEY**



Imel 1-31H  
 SURFACE HOLE LOCATION  
 NAD 83  
 LAT. N38° 00' 51.025"  
 LONG. W99° 46' 24.082"  
 LAT. N38.01417°  
 LONG W99.77336°  
 SPCS KS. SOUTH  
 N1805497.22'  
 E945503.39'

Imel 1-31H  
 BOTTOM HOLE LOCATION  
 NAD 83  
 LAT. N38° 00' 03.957"  
 LONG. W99° 46' 23.987"  
 LAT. N38.00110°  
 LONG W99.77333°  
 SPCS KS. SOUTH  
 N1800736.70'  
 E945446.01'

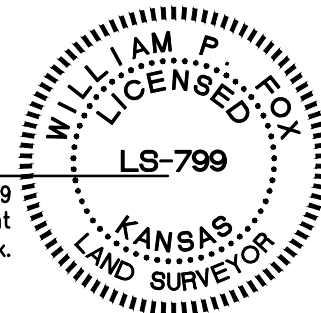


Lease Name: Imel  
 Well No. 1-31H  
 Surface El. at stake: 2336 NAVD88  
 Well location Co./State: Hodgeman Co. Kansas  
 Well location Section: 31-T23S-R22W

Alternate Datums  
 Horz. Datum NAD27  
 Imel #1-31H Lat. N38.014157° Long. W99.772952°

SURVEY DATUMS (shown on drawing)  
 Horz. Datum NAD83(CORS96)  
 Vert. Datum NAVD88(GEOID09)  
 Ks. SPCS South Zone (US Feet)

William P. Fox LS 799  
 This survey is valid only if print  
 bears Surveyor's seal signed in blue ink.



State of Kansas )  
 )SS  
 Sedgwick County )

This is to certify that this map or plat and the survey on which it is based was made by me or under my direct supervision and that to the best of knowledge and belief, this is a true and correct exhibit of said Survey. The wells shown hereon were staked April 19, 2012 at the coordinate location noted.



POE & ASSOCIATES, INC.  
 CONSULTING ENGINEERS  
 5940 E. Central, Suite 200 ■ Wichita, KS 67208-4242  
 Phone 316/685-4114 ■ FAX 316/685-4444