

# GEOLOGIST'S REPORT

DRILLING TIME & SAMPLE LOG

COMPANY BEREXCO LLC  
 LEASE HUSLIG NO. 2-28  
 LOCATION 1922'FNL & 1542'FEL  
 SEC. 28 TWP. 18S RNG. 31W  
 COUNTY SCOTT STATE KANSAS  
 FIELD EVA SOUTH

ELEVATIONS  
 KB 2958  
 DF 2956  
 GL 2946

MEASUREMENTS ARE ALL FROM KH

CASING RECORD  
 8.625" GT 450 W/ 250 SX.  
 \_\_\_\_\_ GT \_\_\_\_\_ W/ \_\_\_\_\_ SX.  
 \_\_\_\_\_ GT \_\_\_\_\_ W/ \_\_\_\_\_ SX.  
 \_\_\_\_\_ GT \_\_\_\_\_ W/ \_\_\_\_\_ SX.

EL. LOG AC-RES-SP-GR  
DEN-NEUT-GR-CALIRER  
ML

CONTRACTOR BEREDCO DRLG. RIG NO. 2  
 COMM. 4-24-2012 COMP. 5-11-2012  
 RTD 4725 LTD 4722  
 No. of DST'S 6 No. of CORES NONE

SAMPLES SAVED FROM 3700 TO TD  
 DRILLING TIME KEPT FROM 3700 TO TD  
 SAMPLES EXAMINED FROM 3700 TO TD  
 GEOLOGICAL SUPERVISION FROM 3700 TO TD  
 GEOLOGIST ON WELL EDWIN H. GRIEVES

FORMATION TOPS	SAMPLE	LOG	SUBSEA
BASE HEEBNER	<u>3894</u>	<u>3887</u>	- <u>929</u>
TORONTO	<u>3903</u>	<u>3898</u>	- <u>940</u>
LANSING FM.	<u>3931</u>	<u>3930</u>	- <u>972</u>
LANSING "H"	<u>4122</u>	<u>4117</u>	- <u>1159</u>
MARMATON	<u>4331</u>	<u>4334</u>	- <u>1376</u>
CHEROKEE FM.	<u>4456</u>	<u>4452</u>	- <u>1494</u>
MISSISSIPPI	<u>4546</u>	<u>4536</u>	- <u>1578</u>
SPERGEN	<u>4592</u>	<u>4596</u>	- <u>1638</u>
TD	<u>4725</u>	<u>4722</u>	



API NO. 15-171-20865

REMARKS East-Tech had an unmanned gas detection trailer on this well from 3700 feet to Total depth.

Thank you for your help!  
 Edwin H. Grieves  
 Geologist

= MUD LOG  
 = MUD LOG  
 = MUD LOG  
 = MUD LOG  
 = MUD LOG

= MUD LOG  
 = MUD LOG  
 = MUD LOG  
 = MUD LOG  
 = MUD LOG

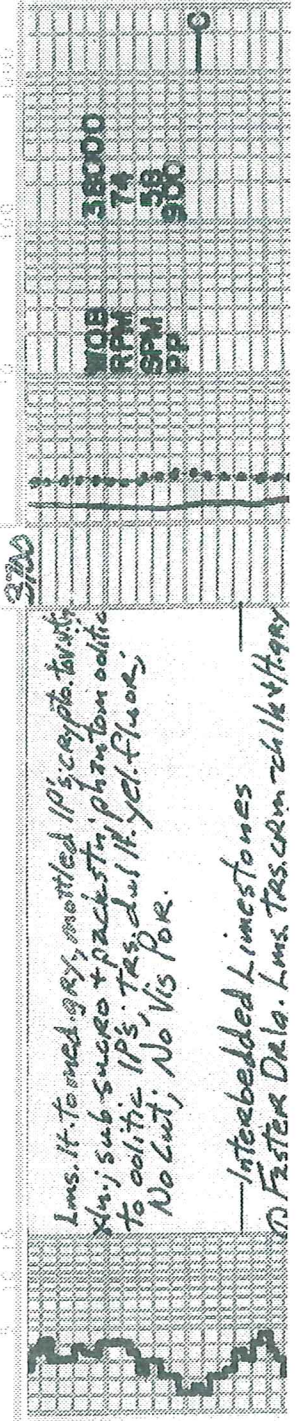
SAMPLE DESCRIPTION

DETAILED SCALE

GAS SCALE

Lms. lt. to med. gr., mottled IP's crypto. to bits  
 sh.; sub-sucro + pack-stn; phanton oolitic  
 to oolitic IP's; Tan. sh. w/ H. yel. flow.  
 No Lut; No Vis POR.

Interbedded Limestones  
 @ Foster Dala. Lms. Tan. sh. w/ ch. l. & sh.



No cut, No vis 10K.

Interebedded Limestones

① Faster Dalg. Lms. trs. cream chalk & gray  
sl. sh. to tan; crypto. to v. tan. x. sh.  
trs. sub-chalky sub-succo. to succo. 2bn  
phantom oolitic to trs. oolitic;  
dul. H. to H. yel. fluor. No cut, 2bn. peto  
ex. sh. trs. good to trs. excel.  
micro-oolitic to interbed. por.  
② Slower H. Dalg. Lms. similar 3100-3717

Lms. tan, grayish lps to H. gray; crypto. to  
v. tan. x. sh. trs. sub-ph. sh. sub-succo.  
+ packstn; dul. H. to H. yel. fluor.;  
No cut; No vis por.

Lms. trs. cream-chalk. Tan; crypto  
to v. v. tan. x. sh. trs. sub-chalk.  
sub-succo. to succo. phantom  
oolitic lps to trs. oolitic;  
sl. trs. micro-oolitic; dul. yel. fluor.  
No cut; 2bn. pr. to tan. micro-oolitic and  
foss. interbed. por. trs. good to excel.  
micro-oolitic to micro-oolitic  
por.

Lms. H. gray to grayish. Tan; sub-succo  
to hyp. trs. packstn; trs. phantom  
oolitic; dul. yel. to dul. H. yel. fluor.;  
No cut; trs. v. pr. micro-oolitic por.

Lms. trs. cream-chalk & H. gray; grayish  
Tan to Tan; crypto. to v. tan. x. sh. oolitic lps  
to phantom oolitic lps; dul. yel. fluor.  
No cut; hyp. trs. micro-oolitic; interbed. por.  
Lms. H. gray to Tan; crypto. to v. tan. x. sh. tan;  
sub-chalky sub-succo. packstn; dul. H.  
yel. to dul. yel. fluor.; No cut; No vis  
por. v. w/ phos interbeds sh. med. gray  
calc. lps

Lms. wh. to cream-chalk to tan; grayish Tan  
crypto. to v. tan. x. sh. sub-chalk; sub-succo  
to succo. + trs. packstn; trs. oolitic to  
trs. phantom oolitic; sl. trs. micro-  
oolitic; dul. H. yel. fluor. No cut.  
2bn. pr. to tan. micro-oolitic por. trs. good  
micro-oolitic to oolitic; good. w/ sh. trs. sl. H. sh.  
H. gray to med. gray; v. tan. sl. trs. med. gray  
calc. lps; sh. med. micaceous nodules  
Lms. similar 3844-3860

Sh. v. dul. gray to 6 lb. - cream.

Lms. similar 3844-3860

Sh. H. grayish lps. to sl. tan. H. gray; v. tan. pr. 3900

sl. to v. tan. micro-oolitic; calc. lps. No cut, No vis por.

Lms. H. gray to Tan; crypto. to v. tan. x. sh. sub-  
succo + packstn; dul. yel. fluor.; No cut, No vis por.  
Lms. v. 2bn. wh. to cream-chalk & cream to  
H. Tan; sub-chalk; sub-succo. to succo. +  
trs. packstn; 2bn. phantom oolitic; dul. H. fluor.  
H. yel. fluor.; No cut; 2bn. pr. to phos trs. good  
micro-oolitic to interbed. por.

Lms. similar 3903-3910

Lms. H. Tan; crypto. to v. tan. x. sh. sub-succo  
+ trs. phantom oolitic; calc. lps; dul. H. fluor.  
H. yel. fluor. No cut; 2bn. pr. to phos trs.  
Lms. 2bn. wh. to cream-chalk & cream; H. Tan; totan;  
crypto. to v. tan. x. sh. trs. med. to coarse;  
wh. calc. v. sh. & fragm.; sub-chalky sub-succo  
to succo + trs. packstn; phantom oolitic lps;  
to trs. oolitic; dul. H. to H. yel. fluor.  
No cut; succo. trs. packstn; micro-oolitic por.  
+ phos v. tan. pr.

Sh. H. to med. gray. sl. to very calc. lps

Interebedded Limestones

① Faster. Dalg. Lms. trs. to hyp. trs. cream-chalk  
& Tan. sl. grayish lps; cream-chalk. To v. tan. x. sh.  
sub-succo. to succo. + trs. phantom  
oolitic lps to oolitic lps; v. tan. x. sh. trs.  
oolitic; dul. yel. fluor.; No cut;  
2bn. pr. to tan. micro-oolitic por.

② Slower Dalg Lms. tan; grayish lps; crypto. to  
v. tan. x. sh. trs. sub-chalk; sub-succo. +  
packstn; trs. phantom oolitic to trs.  
oolitic; dul. yel. fluor.; No cut  
No vis por

Lms. similar to description #2  
3969-4012

Lms. extra. abn. wh. to cream-chalk & cream  
H. Tan; crypto. to v. tan. x. sh. v. 2bn. sub-chalk  
sub-succo. + trs. succo. + trs. H. yel. fluor.  
No cut; widely scattered trs. v. poor  
micro-oolitic por.

Lms. cream-chalk to tan; crypto. to v. tan. x. sh.

PP 900

Bass Heebuck  
3894-926

TRAP CHECK

Toronto  
3703-945

Lansing Fm  
3731-973



Lms. extra abn. wht to cam - chlk + tan to  
H. tan, crypto. to wh. tan. v. 2.6m. subchlk  
sub-succo. + tes. succo. i. H. vel. + fluo  
No cut; widely scattered tes. v. poor  
micro - pp por.

Lms. grayish. tan to tan, crypto. to v. f. ash  
chlk, sub-chlk, sub-succo. + patchy  
phantom oolitic lps, dul. H. vel. to d. vel  
fluor. j. No cut. No lvs. Por

Lms. v. to ext. abn. wht. to cam - chlk + tan  
to tan, grayish. lps; crypto. to v. f. xln; subchlk  
sub-chlk, sub-succo. + patchy. H. vel. to d. vel  
to tes. H. vel. - fluo. j. No cut. No lvs. Por  
micro - pp. por. lps

Lms. tes. to hyp. tes. cream. chlk + tan. to  
tan, grayish. lps; crypto. to v. f. xln; subchlk  
sub-succo. + 2.6m. patchy. dul. yel. H. vel. to  
tes. H. vel. - fluo. j. No cut. No lvs. Por  
w/ sli. faster. Dely having poor micro - pp  
porosity. lps

Lms. similar to 4076-4107 w/ hyp. tes  
Sh. med. to y. dk. gray. to black - carb. looking  
v. dk. gray to black - carb. looking

Lms. H. tan, mottled lps, dk. tan to lps  
oil stain, crypto. to v. f. xln. w/ tes. med.  
to coarse wht. calc. xis + fragm. tes  
sub-chlk, sub-succo. to succo. + patchy  
glint oil calc. tes. dk. tan sp. l  
glint, yel. - fluo. j. No cut. No lvs. Por  
lps; hyp. tes. angular, pps, micro - pp + por.

Lms. H. gray, grayish. tan to tes tan, crypto. to v. f. xln  
xln. sub-chlk, sub-succo. + patchy. H. vel. to d. vel  
to H. vel. - fluo. j. No cut. No lvs. Por

Lms. H. grayish. tan to tes tan, crypto. to v. f. xln  
to v. f. xln. xis, chlk, sub-chlk, sub-succo. and  
pe. fragm. j. 2.6m. phant. to m. aggl. + d. vel  
yel. to wh. No cut. No lvs. Por

4172-4181 Lms. tes. wht. to cream. chlk + tan  
grayish. tan to tan, crypto. to v. f. xln  
sub-chlk, sub-succo. + patchy. H. vel. to d. vel.  
No cut. No lvs. Por

4181-4191 Lms. tes. wht. to cream. chlk + tan  
to tan w/ sli. tes. sp. dk. dk. tan oil stain  
crypto. to v. f. xln. sli. to v. calc. + tan sp. l  
v. calc. m. + xis. lps. tes. subchlk, sub-succo.  
tes. succo. + patchy. s. tes. por. lps. sli. to  
v. calc. j. faint to fr. oil calc. j

w/ glint. overtones. glint. yel. - fluo.  
w/ flash to aggl. staining. cut. j. por. peto  
ca. + tes. glint. calc. + tan. por. tes

4191-4200 Lms. tes. wht. to cream. chlk + tan  
to tan w/ sli. tes. sp. dk. dk. tan oil stain  
crypto. to v. f. xln. sli. to v. calc. + tan sp. l  
v. calc. m. + xis. lps. tes. subchlk, sub-succo.  
tes. succo. + patchy. s. tes. por. lps. sli. to  
v. calc. j. faint to fr. oil calc. j

w/ glint. overtones. glint. yel. - fluo.  
w/ flash to aggl. staining. cut. j. por. peto  
ca. + tes. glint. calc. + tan. por. tes

4200-4210 Lms. tes. wht. to cream. chlk + tan  
to tan w/ sli. tes. sp. dk. dk. tan oil stain  
crypto. to v. f. xln. sli. to v. calc. + tan sp. l  
v. calc. m. + xis. lps. tes. subchlk, sub-succo.  
tes. succo. + patchy. s. tes. por. lps. sli. to  
v. calc. j. faint to fr. oil calc. j

w/ glint. overtones. glint. yel. - fluo.  
w/ flash to aggl. staining. cut. j. por. peto  
ca. + tes. glint. calc. + tan. por. tes

4210-4220 Lms. tes. wht. to cream. chlk + tan  
to tan w/ sli. tes. sp. dk. dk. tan oil stain  
crypto. to v. f. xln. sli. to v. calc. + tan sp. l  
v. calc. m. + xis. lps. tes. subchlk, sub-succo.  
tes. succo. + patchy. s. tes. por. lps. sli. to  
v. calc. j. faint to fr. oil calc. j

w/ glint. overtones. glint. yel. - fluo.  
w/ flash to aggl. staining. cut. j. por. peto  
ca. + tes. glint. calc. + tan. por. tes

4220-4230 Lms. tes. wht. to cream. chlk + tan  
to tan w/ sli. tes. sp. dk. dk. tan oil stain  
crypto. to v. f. xln. sli. to v. calc. + tan sp. l  
v. calc. m. + xis. lps. tes. subchlk, sub-succo.  
tes. succo. + patchy. s. tes. por. lps. sli. to  
v. calc. j. faint to fr. oil calc. j

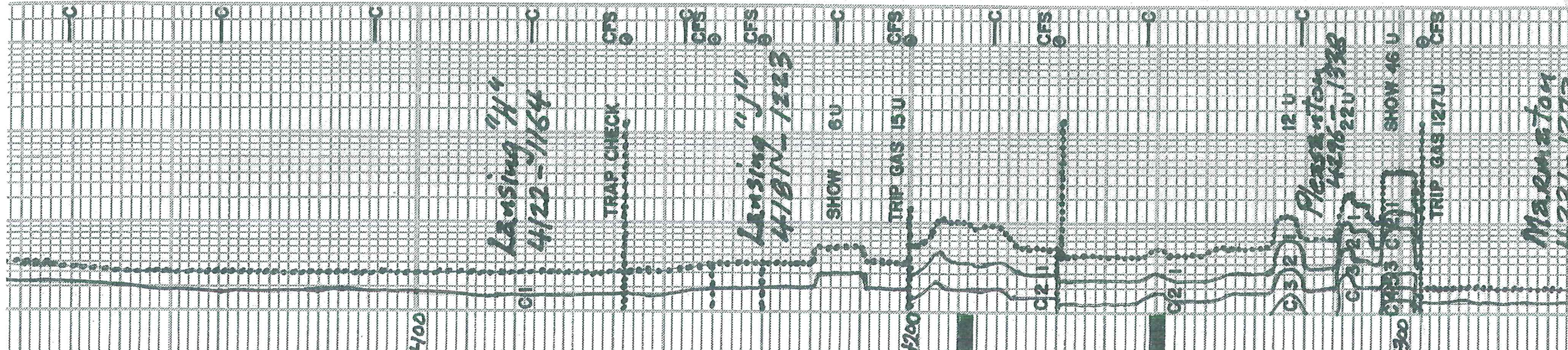
w/ glint. overtones. glint. yel. - fluo.  
w/ flash to aggl. staining. cut. j. por. peto  
ca. + tes. glint. calc. + tan. por. tes

4230-4240 Lms. tes. wht. to cream. chlk + tan  
to tan w/ sli. tes. sp. dk. dk. tan oil stain  
crypto. to v. f. xln. sli. to v. calc. + tan sp. l  
v. calc. m. + xis. lps. tes. subchlk, sub-succo.  
tes. succo. + patchy. s. tes. por. lps. sli. to  
v. calc. j. faint to fr. oil calc. j

w/ glint. overtones. glint. yel. - fluo.  
w/ flash to aggl. staining. cut. j. por. peto  
ca. + tes. glint. calc. + tan. por. tes

4240-4250 Lms. tes. wht. to cream. chlk + tan  
to tan w/ sli. tes. sp. dk. dk. tan oil stain  
crypto. to v. f. xln. sli. to v. calc. + tan sp. l  
v. calc. m. + xis. lps. tes. subchlk, sub-succo.  
tes. succo. + patchy. s. tes. por. lps. sli. to  
v. calc. j. faint to fr. oil calc. j

w/ glint. overtones. glint. yel. - fluo.  
w/ flash to aggl. staining. cut. j. por. peto  
ca. + tes. glint. calc. + tan. por. tes



1/4" to 1/2" wh. 5 sub. filled to 20' Pockets of 1/4" to 1/2" sub. litopods; dul. h. red. to 20'. yellow. No. 13 for 20m. phanton oolite; No. 13 for

Lms. grayish. tan to tan; crypton. tan to sh. sub-shk. Sub-succo. to succo. patches  
 a by phanton optite; 2bn. spid. to tan even  
 dark. tan. ben. to blk oil st. w/ tan nos oil  
 dul. glen to glen. yel. fluv. tan. flash  
 to 2bn. good stem. cuts; tan. poor  
 to 5'; tan. fine. micao. pp. poor  
 prob. interstr. por. 100. Quat. por.

Lms. similar 4331-4340

Sh very dark grey to black - 4216  
 4408-17 Sh. H. to med. grey. 1. to ext. to  
 calc. grading to 20' to 25'. grey to black  
 4417-20 Lms. similar 4424-4432  
 4440-24 Lms. tan w/ 2bn. spid. to even  
 dark. tan. ben. to tan. sh. fluv. crypton  
 to u. v. tan. w/ tan. imbedded micao  
 coarse. w. calc. micao. poor  
 oolite; silt. tan. sh. sub-shk. micao  
 + patches; phanton optite; 1/4" to 1/2"  
 oolite. Re-labeled; 2bn. dup. glen to tan  
 yellow. w/ flash. spid. stem. micao  
 17-16 R. to calc. tan. micao. pp. poor  
 4424-32 Lms. H. grey. tan. sh. 10' to tan. greyish  
 calc. to u. v. tan. tan. phanton optite  
 1/4" to 1/2" sub-shk. micao. poor  
 4432-33 Sh. v. dark grey. blk. - 246

4427-53 Inte-embedded Limestone  
 @ Stovee Delg. similar 4420-24  
 4453-56 Sh. J. dark grey to blk - 226

4456-4575 Inte-embedded Shs & Lms. S.  
 @ Lms. H. grey. tan. crypton. to u. v. tan. xly.  
 tan. sub-shk. micao. poor. 2bn. sub-shk.  
 phanton optite; 1/4" to 1/2" sub-shk. micao. poor  
 scattered. tan. spid. ben. oil st. w/ flash  
 tan. yel. fluv. w/ faint to fine stem. micao  
 cuts for faint to fine. Ring cuts; No. 13 for  
 @ Lms. H. to med. grey. 1. to v. sh. micao. pp.  
 u. v. tan. tan. sub-shk. micao. poor. 2bn. sub-shk.  
 phanton optite; 1/4" to 1/2" sub-shk. micao. poor  
 to tan. w/ dul. oil - fine. micao. pp. poor

Sh med to v. dark grey - sh. to v. calc. 1/4"  
 Sh. v. dark grey to black - 226  
 4575-4576 Lms. H. grey. tan. crypton  
 to u. v. tan. tan. sub-shk. micao. poor  
 5' to 10' sub-shk. micao. poor. 2bn. sub-shk.  
 phanton optite; 1/4" to 1/2" sub-shk. micao. poor  
 tan. spid. dark. tan. ben. to tan. sh. fluv. crypton  
 glen to glen. yel. fluv. tan. flash  
 cuts; scattered. tan. v. pr. top. micao. pp.  
 + poor. v. pr. top. micao. pp.  
 4546-4586 Lms. grey. tan. to tan.  
 CR. 1/4" to u. v. tan. tan. sub-shk.  
 micao. poor. 2bn. sub-shk. micao. poor  
 1/4" to tan. oolite; micao. poor. 2bn. sub-shk.  
 to black oil st. w/ v. dark. stem. micao. pp.  
 yel. fluv. w/ faint to fine. micao. pp.  
 scattered. tan. v. pr. top. micao. pp.  
 to tan. Chert. white. 1/4" to 1/2" to 1/4"  
 4586-4592 Calc. Dol. to Dol. Lms. grey  
 tan. to tan. u. v. tan. tan. sub-shk. micao. poor  
 glen to glen. yel. fluv. tan. flash  
 cuts; 1/4" to 1/2" to 1/4"  
 grading to 1/4" to 1/2" to 1/4"  
 grading to 1/4" to 1/2" to 1/4"  
 No. 13 for. No. 13 for. No. 13 for

4592-4598 Dol. greyish. tan. to tan. w/  
 spid. dark. tan. oil st. w/ tan. to tan. oil st.  
 w/ u. v. tan. tan. sub-shk. micao. poor  
 dul. glen to glen. yel. fluv. tan. flash  
 to g. d. stem. micao. poor. 2bn. sub-shk.  
 2bn. sub-shk. micao. poor. 2bn. sub-shk.  
 w/ tan. flash. micao. poor. 2bn. sub-shk.  
 H. green. Roof micao. pp. poor. 2bn. sub-shk.

4590-4611 Dol. tan. greyish. tan. to tan. w/  
 dark. tan. oil st. w/ tan. to tan. oil st.  
 Sub-succo. to succo. patches. to 2bn. wh.  
 med. to coarse dol. xly. micao. poor. 2bn. sub-shk.  
 to glen. yel. fluv. tan. flash. micao. poor.  
 stem. micao. poor. 2bn. sub-shk. micao. poor  
 g. d. to tan. micao. poor. 2bn. sub-shk.  
 interstr. por. w/ micao. pp. poor  
 4611-4627 Dol. Calc. Dol. to Dol. Lms. grey  
 crypton. to u. v. tan. tan. sub-shk. micao. poor  
 to succo. 2bn. wh. med. to coarse  
 Dol. v. tan. micao. poor. 2bn. sub-shk.  
 laminated w/ tan. micao. poor. 2bn. sub-shk.  
 disseminated. micao. poor. 2bn. sub-shk.  
 yel. fluv. w/ stem. micao. poor. 2bn. sub-shk.  
 to tan. micao. poor. 2bn. sub-shk.  
 v. widely scattered. v. pr. micao. pp. poor  
 4627-4650 Lms. poor. Dol. 1/4" to 1/2" to 1/4"

4331-1373

TRAP CHECK

Prunice  
4405-1447

TRAP CHECK

Pr. Scott  
4435-1477

Cherokee  
4456-1498

Johnson Zn  
4415-1557

Mississippi  
4546-1588

500904  
4592-1634

TRAP CHECK

TRAP CHECK

WOB 42000-45000  
RMM 75  
SPM 58  
PP 950

v. widely scattered v. pr. microppm  
 467-4650 Lms. Pos. Lab. IP's. H-gr. tanish  
 IP's; clay to v. sil. fine. 15-60% chlk  
 sub-sucro + Phosph. Phantom  
 colitic. IP's. dull. H. col. Fluor. IP's  
 No Cut; No Vis. P.R.

4650-4725 Dolo. calc IP's; H-gr.,  
 tanish IP's; clay to v. v. v. chlk.  
 chlk, sub-chlk, sub-sucro to sugro  
 + packeting Phantoms; colitic IP's  
 dul. H. yel. Fluor. IP's; No Cut  
 No Vis. P.R.



TRAP CHECK

4700

TD 4725

779 inch Bit Info:

#1 New Smith F271Y  
 In 450 Out 4725 TD

Six Points:

1. 4142	7. 4350	13. 4576
2. 4160	8. 4380	14. 4591
3. 4170	9. 4430	15. 4598
4. 4200	10. 4455	16. 4604
5. 4230	11. 4520	17. 4614
6. 4304	12. 4540	18. 4725TD

Daily Delg. Progress:

1. 3700	at 3:15AM	4-30-12
2. 3770	at 7:00AM	4-30-12
3. 4142	at 7:00AM	5-1-12
4. 4142	at 7:00AM	5-2-12
5. 4200	at 7:00AM	5-3-12
6. 4304	at 7:00AM	5-4-12
7. 4365	at 7:00AM	5-5-12
8. 4380	at 7:00AM	5-6-12
9. 4540	at 7:00AM	5-7-12
10. 4598	at 7:00AM	5-8-12
11. 4613	at 7:00AM	5-9-12
12. 4725	at 7:00AM	5-10-12

DST#1 Lansing "H" 4124-4142  
 20 7/4 in blow bail to 2 inches  
 FO Squeeze flow bail to 7 inches  
 Rec 279 ft fluid  
 186' MW 50 wt% 50% mud  
 93' MW 60 wt% 40% mud  
 R.w. 24 @ 62°F Tester Cell 3400ppm  
 Mud Eng. Titrated 28000 ppm  
 APT Chl 1000ppm BHT 1240F  
 1 APT 2066 # in 15 min  
 1 FP 17-45 # in 30 min  
 1 SIP 83-45 # in 60 min  
 1 FP 47-139 # in 120 min  
 1 SSP 841 # in 120 min  
 1 FP 197

DST#2 Lansing "J" 4182-4200  
 IF BOB 16mm FF Bob in 22 min  
 Rec 868' fluid BHT 1340F  
 217' MCW 90 wt% 10% mud  
 651' WTR 100% WTR  
 R.w. 20 @ 71°F Tester 35000ppm  
 Mud Eng. Titrated 24000ppm Chl  
 P.T. Chl 1500

1MP 2143 #	in	30 min
1FP 33-208 #	in	60 min
1SIP 773 #	in	60 min
1FP 218-386 #	in	60 min
1SIP 780 #	in	120 min
1FP 2004 #	in	120 min

4725-4800 Lms. Pos. Lab. IP's. H-gr. tanish  
 IP's; clay to v. sil. fine. 15-60% chlk  
 sub-sucro + Phosph. Phantom  
 colitic. IP's. dull. H. col. Fluor. IP's  
 No Cut; No Vis. P.R.



Mud Log Info		5-1	5-2	5-3	5-4	5-5	5-6
Date	8:30A	8:30A	11:30A	11:30A	11:52A	11:52A	11:52A
Depth	38	44	48	54	60	66	72
WT	9.3	9.3	9.3	9.3	9.3	9.3	9.3
Vic	42	50	48	56	62	58	55
PV	16	18	16	18	18	16	16
YP	20	26	24	26	26	26	28
GS	17/20	14/28	14/28	14/28	14/28	14/26	14/28
WL	8.8	8.8	8.8	8.8	8.8	8.8	8.8
cake	1/32	1/32	1/32	1/32	1/32	1/32	1/32
pH	11.5	11.0	10.0	9.0	9.0	10.5	10.0
Chl	2000	2500	1000	1500	2000	1500	1500
CA	100	100	60	60	60	60	60
LCM	2	3	6	3.5	4	6	4.5

Mud Log Info		5-7	5-8	5-9
Date	11:00A	11:00A	11:00A	11:00A
Depth	75	80	86	92
WT	9.1	9.1	9.1	9.1
Vis	51	63	74	
PV	16	18	20	
YP	28	32	32	
GS	14/16	16/28	16/26	
WL	8.0	8.0	8.0	
cake	1/32	1/32	1/32	
pH	9.5	9.5	9.5	
Chl	1000	1500	1500	
CA	40	40	40	
LCM	4	4	3	

OPERATOR **BEREXCO LLC**

LEASE **HUSLIG**

ELEVATION **2958KB**

NO. **2-28**

RTD **4725**

LOCATION **1922FNL 0 1542FEL**

SEC. **28**

TWP. **18S**

RNG. **31W**

COUNTY **SCOTT**

STATE **KANSAS**