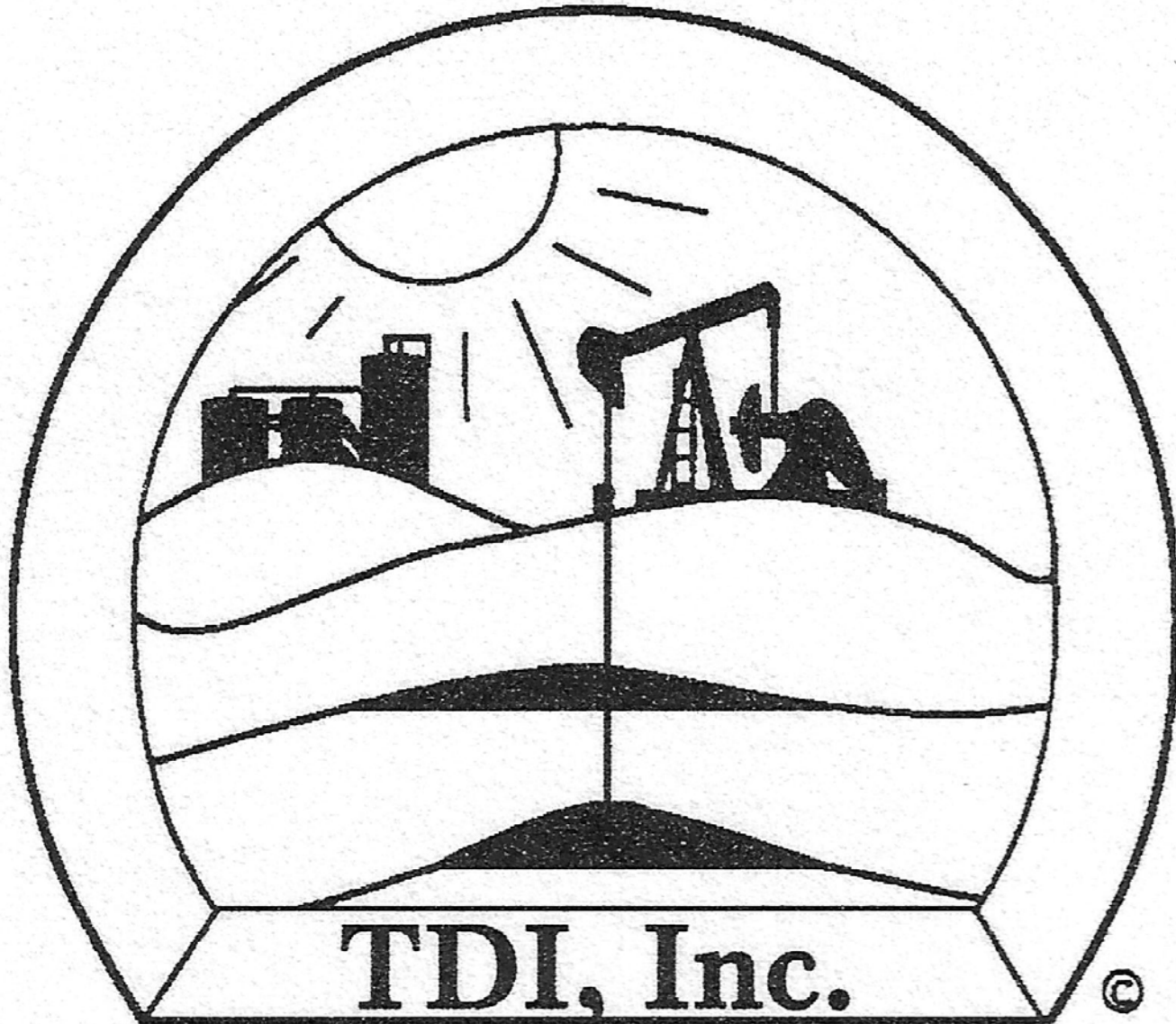


OPERATOR

Company: TDI, INC.
Address: 1310 BISON ROAD
HAYS, KS 67601

Contact Geologist: TOM DENNING
Contact Phone Nbr: 785-259-3141
Well Name: WIESNER UNIT #1
Location: NE NE SW
Pool: WILDCAT
State: Kansas

API: 15-051-26,270-00-00
Field: UNNAMED
Country: USA



1310 BISON ROAD
HAYS, KANSAS 67601
(785) 628-2593

Scale 1:240 Imperial

Well Name: WIESNER UNIT #1
Surface Location: NE NE SW
Bottom Location:
API: 15-051-26,270-00-00
License Number: 4787
Spud Date: 3/26/2012
Region: ELLIS COUNTY
Drilling Completed: 4/1/2012
Surface Coordinates: 2310' FSL & 2310' FWL
Bottom Hole Coordinates:
Ground Elevation: 2153.00ft
K.B. Elevation: 2162.00ft
Logged Interval: 3100.00ft
Total Depth: 3950.00ft
Formation: ARBUCKLE
Drilling Fluid Type: CHEMICAL/FRESH WATER GEL

Time: 11:00 AM
Time: 7:49 AM
To: 3950.00ft

SURFACE CO-ORDINATES

Well Type: Vertical
Longitude:
N/S Co-ord: 2310' FSL
E/W Co-ord: 2310' FWL
Latitude:

LOGGED BY



Company: SOLUTIONS CONSULTING
Address: 108 W 35TH
HAYS, KS 67601

Phone Nbr: (785) 639-1337

CONTRACTOR

Contractor: SOUTHWIND DRILLING, INC.
 Rig #: 2
 Rig Type: MUD ROTARY
 Spud Date: 3/26/2012
 TD Date: 4/1/2012
 Rig Release: 4/2/2012
 Time: 11:00 AM
 Time: 7:49 AM
 Time: 12:00 AM

ELEVATIONS

K.B. Elevation: 2162.00ft
 K.B. to Ground: 9.00ft
 Ground Elevation: 2153.00ft

NOTES

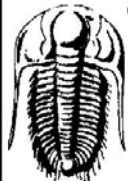
RECOMMENDATION TO RUN PRODUCTION CASING BASED ON FAVORABLE STRUCTURE AND POSITIVE RESULTS OF DST # 1

WIESNER UNIT #1
 NE NE SW
 Sec.5-13s-20w
 2162' KB

<u>Formations</u>	<u>Sample top</u>	<u>Log top</u>
Anhydrite	1497+ 665	1506+ 656
B-Anhydrite	1545+ 617	1544+ 618
Topeka	3186-1024	3185-1023
Heebner Shale	3416-1254	3414-1252
Toronto	3440-1278	3437-1275
LKC	3456-1294	3454-1292
BKC	3706-1544	3700-1538
Marmaton	3754-1592	3751-1589
Arbuckle	3815-1653	3824-1662
RTD	3950-1788	
LTD		3949-1787

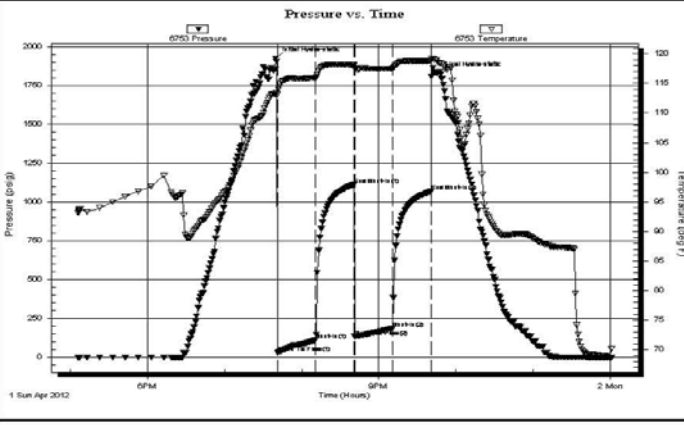
- 3-26-12 RU, Spud, set surface casing to 200.97' w/150 sxs. Common, 2%gel, 3%CC, Slope survey 1 degree, WOC 8 hrs. Plug down 11:00PM.
- 3-27-12 200' drilling plug
- 3-28-12 1682' drilling
- 3-29-12 2407' drilling
- 3-30-12 3089' drilling
- 3-31-12 3545' drilling
- 4-01-12 3937' drilling, RTD 3950', short trip, logs, DST#1 straddle test-Arbuckle
- 4-02-12 3950' run production casing, cement casing.

DST #1 SUMMARY

	DRILL STEM TEST REPORT	
	TDI Inc. 1310 Bison Rd Hays KS 67601 ATTN: Herb Deines	5-13-20, Ellis, KS Wiesner Unit #1 Job Ticket: 47701 Test Start: 2012.04.01 @ 17:05:39
GENERAL INFORMATION:		
Formation: Arb. Deviated: No Whipstock: ft (KB) Time Tool Opened: 19:41:09 Time Test Ended: 00:01:39	Test Type: Conventional Straddle (Initial) Tester: Brett Dickinson Unit No: 59	Reference Elevations: 2165.00 ft (KB) 2156.00 ft (CF) KB to GR/CF: 9.00 ft
Interval: 3780.00 ft (KB) To 3844.00 ft (KB) (TVD) Total Depth: 3950.00 ft (KB) (TVD) Hole Diameter: 7.88 inches Hole Condition: Fair		
Serial #: 6753 Press@RunDepth: 186.10 psig @ 3840.00 ft (KB)	Outside Capacity: 8000.00 psig	

Start Date: 2012.04.01 End Date: 2012.04.02 Last Calib.: 2012.04.02
 Start Time: 17:05:44 End Time: 00:01:38 Time On Btm: 2012.04.01 @ 19:39:39
 Time Off Btm: 2012.04.01 @ 21:46:09

TEST COMMENT: IF-BOB in 9.5min
 ISL-75in blow died back to weak surface blow
 FF-BOB in 10min
 FSI-1.25in blow died back to 1in blow



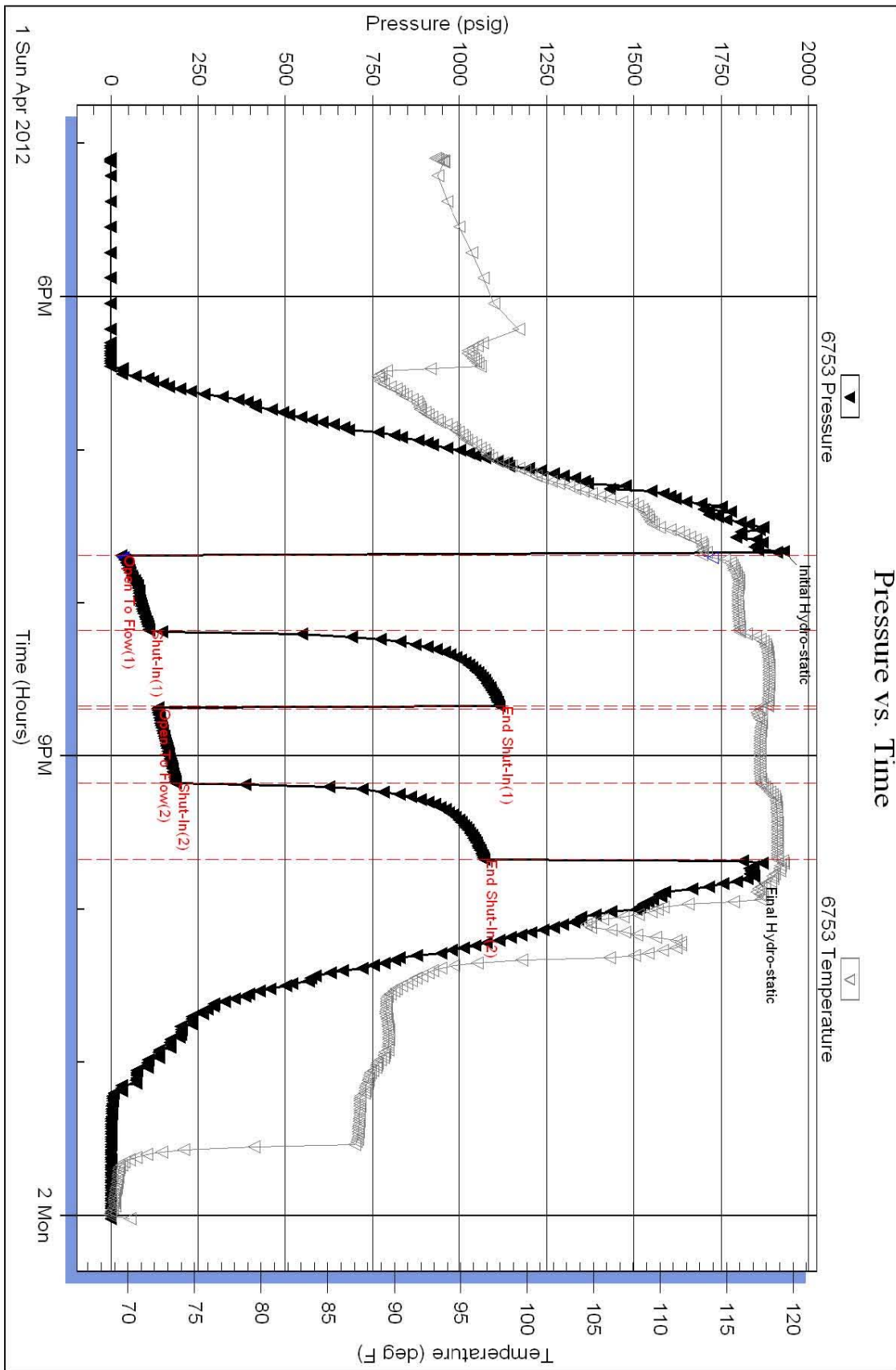
PRESSURE SUMMARY			
Time (Min.)	Pressure (psig)	Temp (deg F)	Annotation
0	1927.88	113.21	Initial Hydro-static
2	29.77	113.17	Open To Flow (1)
31	110.14	115.98	Shut-In(1)
61	1114.19	118.10	End Shut-In(1)
62	132.51	117.65	Open To Flow (2)
91	186.10	117.57	Shut-In(2)
121	1070.85	118.81	End Shut-In(2)
127	1832.02	118.63	Final Hydro-static

Recovery		
Length (ft)	Description	Volume (bbl)
75.00	GSMCO 25%G 10%M 65%O	1.05
185.00	GMCO 20%G 10%M 70%O	2.60
185.00	SGO 10%G 90%O	2.60
0.00	120ft GIP	0.00

Gas Rates			
	Choke (inches)	Pressure (psig)	Gas Rate (Mcf/d)

Trilobite Testing, Inc Ref. No: 47701 Printed: 2012.04.02 @ 08:34:55

DST #1 EXPANDED CHART



Trilobite Testing, Inc

Ref. No: 47701

Printed: 2012.04.02 @ 08:34:57

Serial #: 6753

Outside TDI Inc.

Wesner Unit #1

DST Test Number: 1

ROCK TYPES

	Congl		Lmst fw<7		shale, gry		Lscong
	Chtcong		Lmst fw>7		Carbon Sh		
	Dolprim		shale, grn		shale, red		

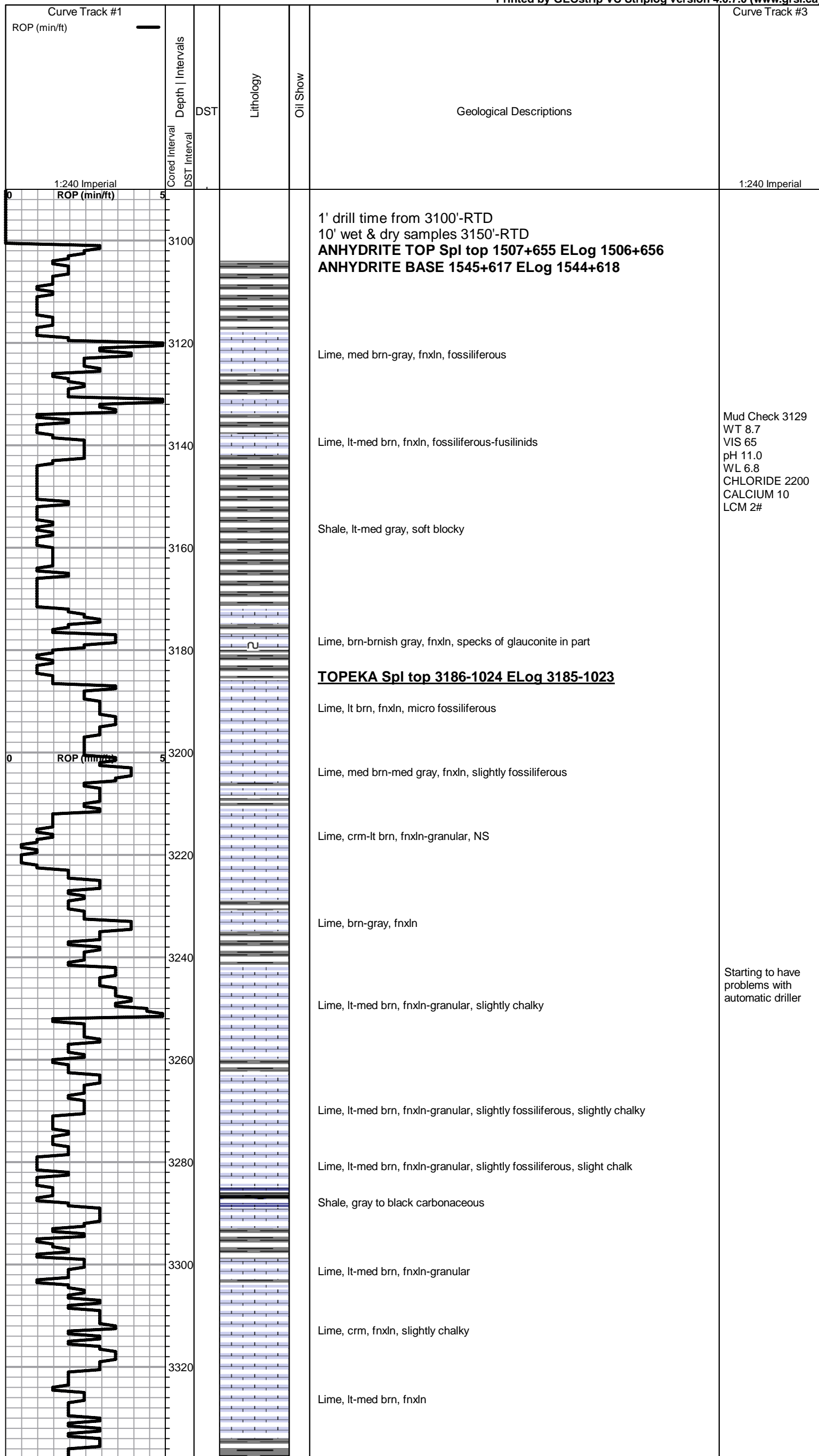
ACCESSORIES

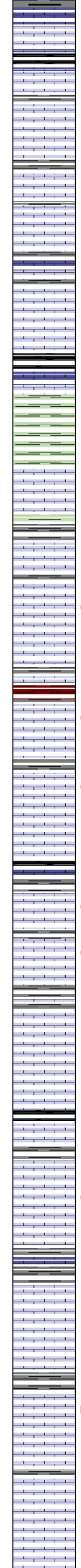
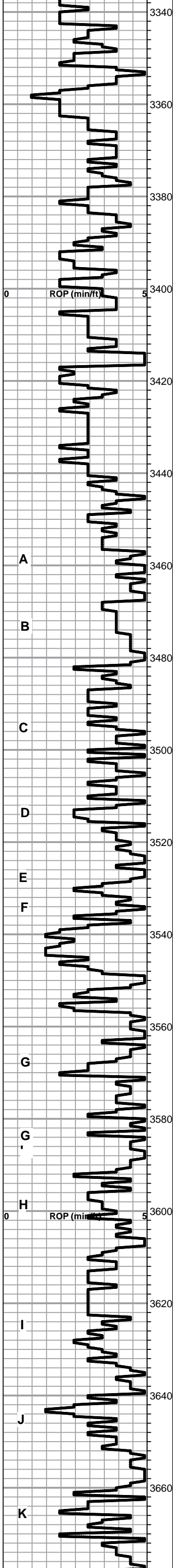
- MINERAL**
 ∩ Glauconite
 ∙ Varicolored chert
 △ Chert White

OTHER SYMBOLS

- DST**
 DST Int
 DST alt

Printed by GEOstrip VC Striplog version 4.0.7.0 (www.grsi.ca)





Lime, gray-grayish brn,fnxn

Shale, gray-black carbonaceous

Lime, lt brn-lt gray, fnxn-granular w/chalk, slightly fossiliferous

Lime, lt-med brn, fn-vfxln, slightly chalky

Lime, med brn, fn-vfxln

Lime, brn-gray, fnxn-granular in part

Lime, lt-med brn, fnxn-granular, slightly fossiliferous

Lime, lt-med brn, fnxn-granular, slightly fossiliferous

HEEBNER SHALE Spl top 3416-1254 ELog 3414-1252

Shale, black carbonaceous

Shale, lime green, soft mud balls in part

TORONTO Spl top 3440-1278 ELog 3437-1275

Lime, white-crm, fnxn, NS

LKC Spl top 3456-1294 ELog 3454-1292

Lime, crm-tan, fn-vfxln, few pcs oolitic w/fossil fragments, v lt stain NFO no odor

Lime, crm-v lt gray, fn-vfxln

Shale, reddish brn forming soft mud balls

Lime, crm, mostly fnxn, few pcs oolitic, scattered staining, NFO,No odor

Shale, gray, calcareous w/ chert nodules

Lime, crm-tan, mostly fnxn w few pcs oolitic w/fossil fragments, spotted stain, NFO, No odor

Shale, gray-black carbonaceous

Lime, tan-lt brn, fnxn, scattered oolitic fragments, scattered stain, NFO

Lime, wht-crm, oolitic-oomoldic in part, scattered stain, NFO, No odor

Shale, gray, fissile

Lime, crm-lt brn, fnxn, slightly chalky

Lime, lt brn, fnxn

Shale, gray-black carbonaceous

Lime, crm-lt gray, fnxn

Lime, crm-tan, fnxn, sparry calcite backfill in pores.

Lime, lt brn, fnxn, few pcs oolitic, spotty staining, NFO, No odor

Shale, gray, blocky

Lime, lt-med brn, mostly fnxn

Lime, crm-lt brn, fnxn-granular in part, NFO, No odor

Lime, crm-lt brn, fnxn-granular

Shale, gray-grayish green, blocky

Lime, wht-crm, fnxn w/gilsonite in part

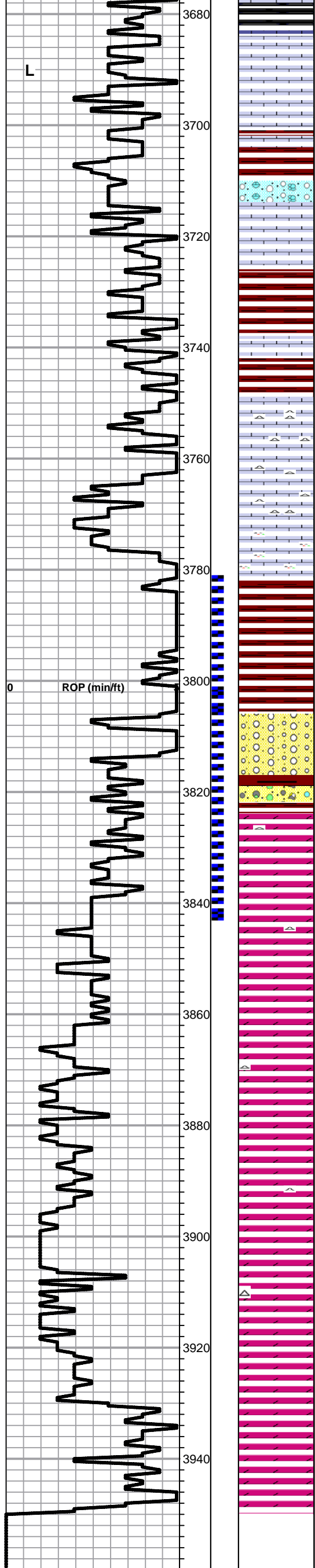
Lime, offwht-crm, fn-cryptocrystalline

Lime, lt gray-lt brn, fnxn

Lime, offwht-lt brn, fn-vfxln

Repaced automatic driller

Mud Check 3552
 WT 9.0
 VIS 53
 pH 10.5
 WL 7.2
 CHLORIDE 3000
 CALCIUM 40
 LCM 2#



Shale, gray-black carbonaceous

Lime, crm-lt brn, fnxn

Lime, offwht-lt brn, fnxn
BKC Spl top 3706-1544 ELog 3700-1538

Shale, reddish brn, soft, blocky

Lime, offwht-lt brn, fnxn, clastic lime-shale mix in part

Shale, reddish brn, blocky, fine sand-gritty in part

Lime, offwht-lt brn clastic mix

Shale, mix of colors, reds, browns, grays
MARMATON Spl top 3754-1592 ELog 3751-1589

Lime, tan-brn, fnxn, fresh crm-lt brn chert

Lime, dolomitic, fnxn-granular, hard, fresh chert, NS, No wet cut

Lime, dolomitic, crm-lt brn, fnxn-granular, very hard to crush

Shale, reds, brns, soft, lt red wash

Cherts, vari-colored
ARBUCKLE Spl top 3815-1653 ELog 3824-1662

- Dolomite, lt brn, fnxn, scattered-saturated stain, lt odor, VMSFO
- Dolomite, wht-ivory-lt brn, fnxn grading into cxln with rhombic crystalline development. Lt-saturated stain, lt odor.

Dolomite, ivory, fn-cxln, V LT Odor

Dolomite, ivory, fn-cxln, very lt to no odor

Dolomite, ivory-crm, fn-cxln, NS, NO Odor

Dolomite, ivory-crm, fn-cxln, specks of green glauconite

Dolomite, crm, fn-cxln

Dolomite, crm, fn-cxln

Dolomite, crm, fnxn

Dolomite, crm, fnxn
RTD 3950-1788 LTD 3949-1787

DST #1 3780-3844
 Straddle Test
 30-30-30-30
 REC:120'GIP
 75'GSMCO
 185' GMCO
 185' SGO
 445' Total Fluid
 Gravity 34
 BHT: 119 degrees
 ISIP: 1114#
 FSIP: 1071#
 FP: 30-110,133-186

QUALITY OILWELL CEMENTING, INC.

Federal Tax I.D.# 20-2886107

Phone 785-483-2025
Cell 785-324-1041

Home Office P.O. Box 32 Russell, KS 67665

No. 268

Date	3/26/12	Sec.	S	Twp.	13	Range	20	County	Ellis	State	KS	On Location		Finish	11:00 PM	
Lease	Wiesner Unit		Well No.	1		Location	Ellis, 1 N, 1 W, 1 1/2 S, E + N into									
Contractor	Southwind Drilling Rig # 2							Owner	To Quality Oilwell Cementing, Inc. You are hereby requested to rent cementing equipment and furnish cementer and helper to assist owner or contractor to do work as listed.							
Type Job	Surface							Hole Size	12 1/4"		T.D.	202'				
Csg.	8 3/8" 20#		Depth	201'		Charge To	TDI, Inc.									
Tbg. Size								Depth								
Tool								Depth								
Cement Left in Csg.	15'		Shoe Joint	The above was done to satisfaction and supervision of owner agent or contractor.												
Meas Line								Displace	12 Bbls.		Cement Amount Ordered	150 sxcem 3 1/2 cc 2% gel				

EQUIPMENT

Pumptrk	9	No.	Cementor	Paul	Common	150
			Helper			
Bulktrk	14	No.	Driver	Matt	Poz. Mix	
			Driver			
Bulktrk	PV	No.	Driver	Cody	Gel.	3
			Driver			
JOB SERVICES & REMARKS					Calcium	3

Remarks:	Hulls
Rat Hole	Salt
Mouse Hole	Flowseal
Centralizers	Kol-Seal
Baskets	Mud CLR 48
D/V or Port Collar	CFL-117 or CD110 CAF 38

Est. Circ.
mix 150 sxc
Displace
Cement Circulated

Sand	
Handling	158
Mileage	

FLOAT EQUIPMENT

Guide Shoe	4 1/4"
Centralizer	
Baskets	
AFU Inserts	3 ways
Float Shoe	
Latch Down	

Thank You!!

Pumptrk Charge	Surface
Mileage	18

X Signature *William Lewis*

Tax	
Discount	
Total Charge	

JOB LOG

SWIFT Services, Inc.

DATE 2 APR 12 PAGE NO.

CUSTOMER TDI

WELL NO. #1

LEASE Weisner Unit

JOB TYPE 2 stage cement / mg string

TICKET NO. 22044

CHART NO.	TIME	RATE (BPM)	VOLUME (BBL) (GAL)	PUMPS		PRESSURE (PSI)		DESCRIPTION OF OPERATION AND MATERIALS
				T	C	TUBING	CASING	
								150 sks EA-2 - 150 sl SMD w/ 1/2" flocc 5 1/2" x 14" casing
								Controlizer 1, 3, 5, 7, 9, 11, 13, 15, 59 Basket 2.16, 59, 88' Unit clamp - mid #59
	0800							on loc TRK 114
	0825							start 5 1/2" 14" casing in well
	1015							Drop ball circulate - ROTATE
	11.5	4 3/4	12				200	Pump 500 gal mud flush
		4 3/4	20				200	Pump 20 bbl KCl flush
	1120	4 3/4	36				200	mix EA-2 @ 15.3 ppg 150 sks Drop latch down plug wash out pump & line
	1135	6 3/4	58				250	Displace plug w/ 1/2 O
		6 3/4	37				250	switch to mud
	1150		95				1500	Land plug Release pressure to truck - dried up Drop bomb
	1200							Plug RH - MH 30 sks - 20 sks
	1210						1000	open DV tool
	1225	6 3/4	20				200	pump 20 bbl KCl flush
		6 3/4	100				200	mix SMD @ 11.2 ppg 130 sks Drop 2nd stage plug
	1243	6 3/4					200	Displace 2nd plug
		6 3/4	34				300	— cement to surface —
	1243		36				2000	Land plug - close DV tool Release pressure to trucks dried up
	1245							wash truck Rack up
	1325							job complete

2nd stage cement to surface 130 sks mixed 20 top

Thanks
Doug, Dave & Brianne