

T33S, R7W, 6th P.M.

SCOMI

UELS Alum. Cap.
8" Below Ground
NAD 27 Kansas South
N: 1927923.14
E: 2123701.91

1/2" Rebar 0.4' Below
Ground
NAD 27 Kansas South
N: 1928561.9
E: 2123904.39

Well location, HUDGENS 3307 #10-1H, located as shown in the SE 1/4 SE 1/4 of Section 10, T33S, R7W, 6th P.M., Harper County, Kansas.

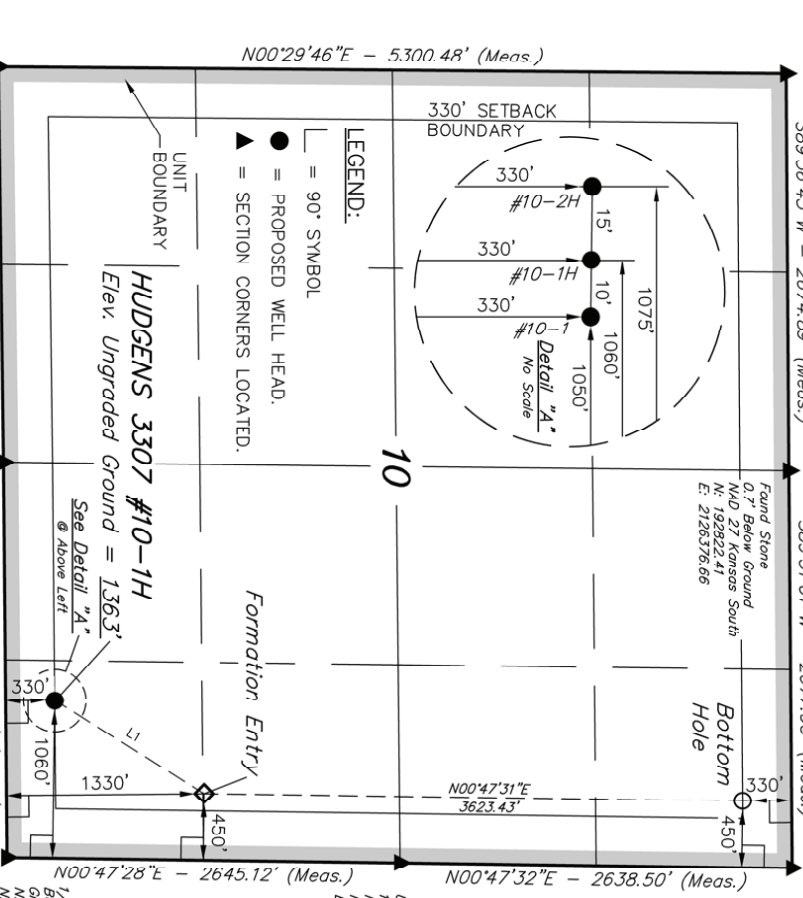
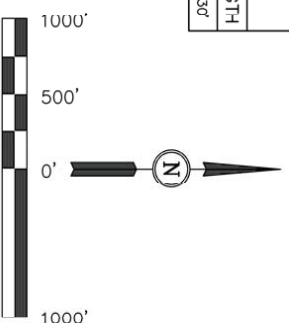
BASIS OF ELEVATION

SPOT ELEVATION LOCATED AT THE NORTHEAST CORNER OF SECTION 22, T33S, R7W, 6th P.M. TAKEN FROM THE ANTI-ONY, QUADRANGLE, KANSAS, HARPER COUNTY, 7.5 MINUTE QUAD (TOPOGRAPHIC MAP) PUBLISHED BY THE UNITED STATES DEPARTMENT OF THE INTERIOR, GEOLOGICAL SURVEY. SAID ELEVATION IS MARKED AS BEING 1348 FEET.

BASIS OF BEARINGS

BASIS OF BEARINGS IS A G.P.S. OBSERVATION.

LINE	DIRECTION	LENGTH
L1	N3°49'20"E	1183.30'



LEGEND:
 ◻ = 90° SYMBOL
 ● = PROPOSED WELL HEAD.
 ▲ = SECTION CORNERS LOCATED.

HUDGENS 3307 #10-1H
 Elev. Ungraded Ground = 1363.3'
 See Detail "A" @ Above Left

Found Stone, Iron Bar 2.5' Below Ground NAD 27 Kansas South N: 187492.64 E: 212678.13	1/2" Rebar 1.3' Below Ground NAD 27 Kansas South N: 187537.75 E: 212634.70	1/2" Rebar 1.0' Below Ground in Gavel Road Intersection NAD 27 Kansas South N: 187572.14 E: 2129003.45
NAD 83 (#10-1H TARGET BOTTOM HOLE) LATITUDE = 37°11'40.50" (37.194583) LONGITUDE = 98°03'31.91" (98.058964)	NAD 83 (#10-1H FORMATION ENTRY) LATITUDE = 37°11'04.68" (37.184633) LONGITUDE = 98°03'32.55" (98.059042)	NAD 83 (#10-1H SURFACE LOCATION) LATITUDE = 37°10'54.74" (37.181872) LONGITUDE = 98°03'40.27" (98.061186)
NAD 27 (#10-1H TARGET BOTTOM HOLE) LATITUDE = 37°11'40.42" (37.194561) LONGITUDE = 98°03'30.68" (98.058522)	NAD 27 (#10-1H FORMATION LOCATION) LATITUDE = 37°11'04.60" (37.184611) LONGITUDE = 98°03'31.32" (98.058700)	NAD 27 (#10-1H SURFACE LOCATION) LATITUDE = 37°10'54.66" (37.181850) LONGITUDE = 98°03'39.04" (98.060944)
STATE PLANE NAD 27 (KANSAS SOUTH) N: 192320.53 E: 2128500.82	STATE PLANE NAD 27 (KANSAS SOUTH) N: 188897.38 E: 2128556.15	STATE PLANE NAD 27 (KANSAS SOUTH) N: 187893.07 E: 2127946.20

CERTIFICATE
 THIS IS TO CERTIFY THAT THE ABOVE IS A TRUE AND CORRECT COPY OF THE ORIGINAL SURVEY RECORD AS FILED IN THE OFFICE OF THE REGISTERED LAND SURVEYOR FOR HARPER COUNTY, KANSAS, ON 05-22-12.
 REGISTERED LAND SURVEYOR
 JUSTIN W. HARRIS
 HARPER COUNTY, KANSAS
 REV. 05-14-12 C.A.G.

UTAH ENGINEERING & LAND SURVEYING 85 SOUTH 200 EAST - VERNAL, UTAH 84078 (435) 789-1017	SCALE: 1" = 1000'	DATE SURVEYED: 04-10-12	DATE DRAWN: 04-19-12
WEATHER: WARM	PARTY: J.H., C.M., K.O.	REFERENCES: G.L.O. PLAT	FILE: SCOMI