

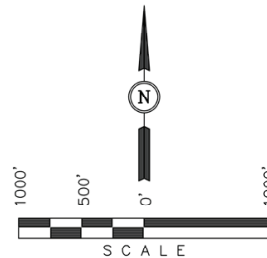
Well location, HUDGENS 3307 #10-2H, located as shown in the SE 1/4 SE 1/4 of Section 10, T33S, R7W, 6th P.M., Harper County, Kansas.

BASIS OF ELEVATION

SPOT ELEVATION LOCATED AT THE NORTHEAST CORNER OF SECTION 22, T33S, R7W, 6th P.M. TAKEN FROM THE ANTHONY, QUADRANGLE, KANSAS, HARPER COUNTY, 7.5 MINUTE QUAD (TOPOGRAPHIC MAP) PUBLISHED BY THE UNITED STATES DEPARTMENT OF THE INTERIOR, GEOLOGICAL SURVEY. SAID ELEVATION IS MARKED AS BEING 1348 FEET.

BASIS OF BEARINGS

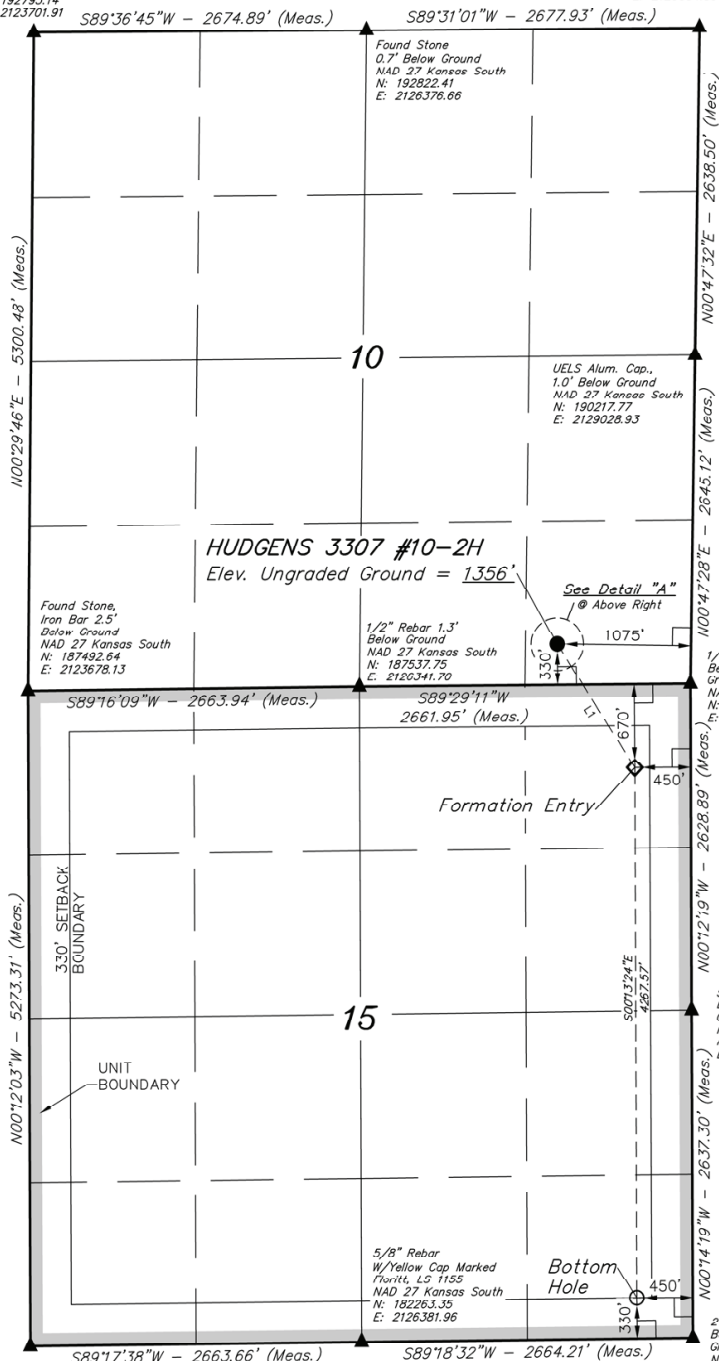
BASIS OF BEARINGS IS A G.P.S. OBSERVATION.



LINE TABLE		
LINE	DIRECTION	LENGTH
L1	S32°03'49"E	1173.77'

UELS Alum. Cap.
8" Below Ground
NAD 27 Kansas South
N: 192793.14
E: 2123701.91

1/2" Rebar 0.4" Below
Ground
NAD 27 Kansas South
N: 192856.18
E: 2129054.39



3/4" Iron Pipe,
0.6' Below Ground
In Gravel Road Intersection
NAD 27 Kansas South
N: 182219.40
E: 2123718.62

5/8" Rebar 0.6"
Below Ground in
Gravel Road
NAD 27 Kansas South
N: 182306.63
E: 2129045.85

LEGEND:

- └─ = 90° SYMBOL
- = PROPOSED WELL HEAD.
- ▲ = SECTION CORNERS LOCATED.

CERTIFICATE

THIS IS TO CERTIFY THAT THE ABOVE PLAT WAS PREPARED FROM FIELD NOTES OF ACTUAL SURVEYS MADE BY ME OR UNDER MY SUPERVISION AND THAT THE SAME ARE TRUE AND CORRECT TO THE BEST OF MY KNOWLEDGE AND BELIEF.

REGISTERED LAND SURVEYOR

REV: 05-22-12 C.A.G. STATE OF KANSAS
REV: 05-14-12 C.A.G.

UINTAH ENGINEERING & LAND SURVEYING
85 SOUTH 200 EAST - VERNAL, UTAH 84078
(435) 789-1017

NAD 83 (#10-2H TARGET BOTTOM HOLE) LATITUDE = 37°10'02.71" (37.167419) LONGITUDE = 98°03'32.58" (98.059050)	NAD 83 (#10-2H FORMATION ENTRY) LATITUDE = 37°10'44.09" (37.178914) LONGITUDE = 98°03'32.76" (98.059100)	NAD 83 (#10-2H SURFACE LOCATION) LATITUDE = 37°10'54.74" (37.181872) LONGITUDE = 98°03'40.45" (98.061236)
NAD 27 (#10-2H TARGET BOTTOM HOLE) LATITUDE = 37°10'02.63" (37.167397) LONGITUDE = 98°03'31.35" (98.058708) STATE PLANE NAD 27 (KANSAS SOUTH) N: 182629.38 E: 2128593.44	NAD 27 (#10-2H FORMATION ENTRY) LATITUDE = 37°10'44.82" (37.179117) LONGITUDE = 98°03'31.53" (98.058758) STATE PLANE NAD 27 (KANSAS SOUTH) N: 188885.71 E: 2128558.67	NAD 27 (#10-2H SURFACE LOCATION) LATITUDE = 37°10'54.66" (37.181850) LONGITUDE = 98°03'39.22" (98.060894) STATE PLANE NAD 27 (KANSAS SOUTH) N: 187889.00 E: 2127931.83

SCALE 1" = 1000'	DATE SURVEYED: 04-10-12	DATE DRAWN: 04-19-12
PARTY J.H. C.M. K.O.	REFERENCE G.L.O. PLAT	
WEATHER WARM	FILE	SGOMI