

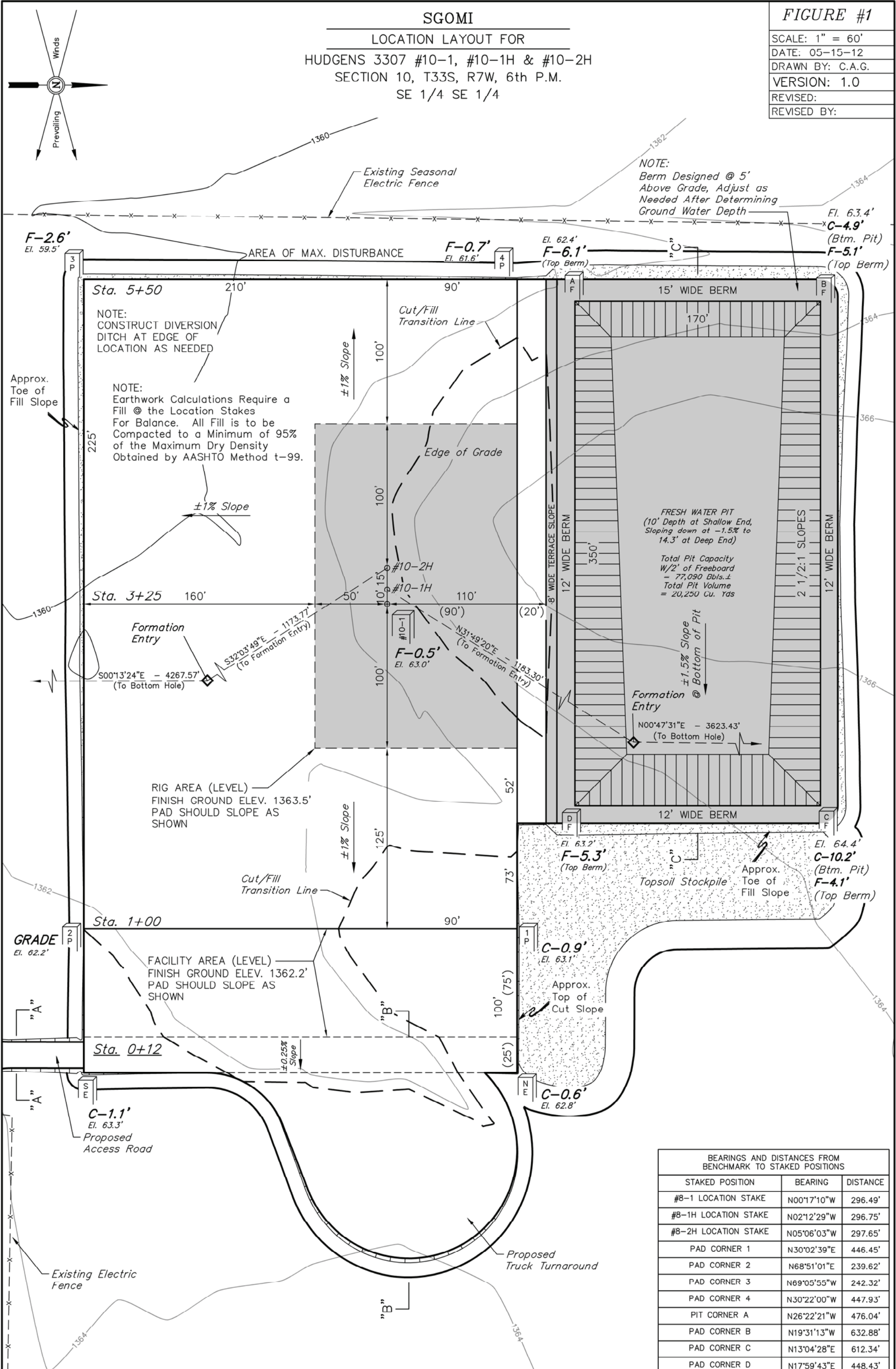
SGOMI

LOCATION LAYOUT FOR

HUDGENS 3307 #10-1, #10-1H & #10-2H
SECTION 10, T33S, R7W, 6th P.M.
SE 1/4 SE 1/4

FIGURE #1

SCALE: 1" = 60'
DATE: 05-15-12
DRAWN BY: C.A.G.
VERSION: 1.0
REVISED:
REVISED BY:



BEARINGS AND DISTANCES FROM BENCHMARK TO STAKED POSITIONS		
STAKED POSITION	BEARING	DISTANCE
#8-1 LOCATION STAKE	N00°17'10"W	296.49'
#8-1H LOCATION STAKE	N02°12'29"W	296.75'
#8-2H LOCATION STAKE	N05°06'03"W	297.65'
PAD CORNER 1	N30°02'39"E	446.45'
PAD CORNER 2	N68°51'01"E	239.62'
PAD CORNER 3	N69°05'55"W	242.32'
PAD CORNER 4	N30°22'00"W	447.93'
PIT CORNER A	N26°22'21"W	476.04'
PAD CORNER B	N19°31'13"W	632.88'
PAD CORNER C	N13°04'28"E	612.34'
PAD CORNER D	N17°59'43"E	448.43'
NE FACILITIES CORNER	N39°56'11"E	504.03'
SE FACILITIES CORNER	N75°01'41"E	334.88'

Elev. Ungraded Ground At #10-1 Loc. Stake = 1363.0'
FINISHED GRADE ELEV. AT #10-1 LOC. STAKE = 1363.5'

UINTAH ENGINEERING & LAND SURVEYING
85 So. 200 East * Vernal, Utah 84078 * (435) 789-1017