



DRILL STEM TEST REPORT

Prepared For: **Shelby Resources**

2717 Canal Blvd. Hays Kansas 67601

ATTN: Keith Reavis

S-H unit #1-20

20-17s-13w-Barton

Start Date: 2011.11.17 @ 02:12:00

End Date: 2011.11.17 @ 09:34:30

Job Ticket #: 17234 DST #: 1

Superior Testers Enterprises LLC
PO Box 138 Great Bend KS 67530
1-800-792-6902

Printed: 2011.11.17 @ 09:56:54



DRILL STEM TEST REPORT

Shelby Resources
 2717 Canal Blvd. Hays Kansas 67601
 ATTN: Keith Reavis

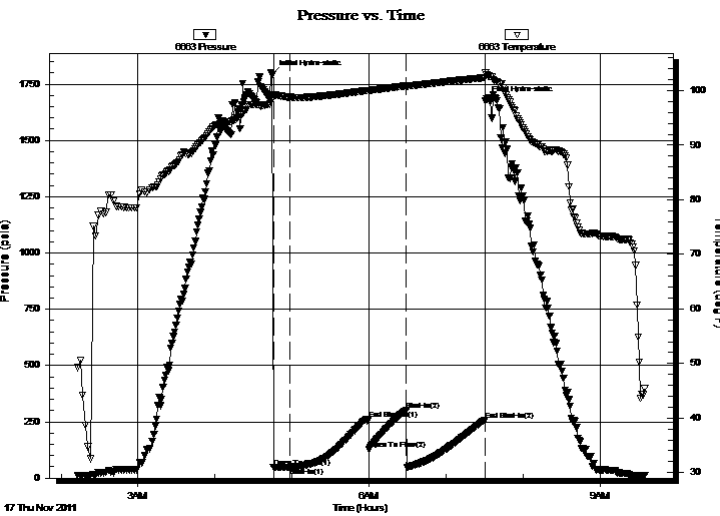
20-17s-13w-Barton
S-H unit #1-20
 Job Ticket: 17234 **DST#: 1**
 Test Start: 2011.11.17 @ 02:12:00

GENERAL INFORMATION:

Formation: **Arbuckle**
 Deviated: No Whipstock: ft (KB)
 Time Tool Opened: 04:45:30
 Time Test Ended: 09:34:30
 Interval: **3400.00 ft (KB) To 3433.00 ft (KB) (TVD)**
 Total Depth: 3400.00 ft (KB) (TVD)
 Hole Diameter: 7.88 inches Hole Condition: Fair
 Test Type: Conventional Bottom Hole (Initial)
 Tester: Dustin Ellis
 Unit No: 3315-GB-30
 Reference Elevations: 1940.00 ft (KB)
 1929.00 ft (CF)
 KB to GR/CF: 11.00 ft

Serial #: 6663 Outside
 Press @ RunDepth: 302.49 psia @ 3430.00 ft (KB) Capacity: 5000.00 psia
 Start Date: 2011.11.17 End Date: 2011.11.17 Last Calib.: 2011.11.17
 Start Time: 02:12:00 End Time: 09:34:30 Time On Btm: 2011.11.17 @ 04:44:30
 Time Off Btm: 2011.11.17 @ 07:30:30

TEST COMMENT: 1st Open 15 minutes Weak surface blow
 1st Shut in 60 minutes No blow back
 2nd Open 30 minutes Very weak surface blow then died off
 2nd Shut in 60 minutes No blow back



PRESSURE SUMMARY

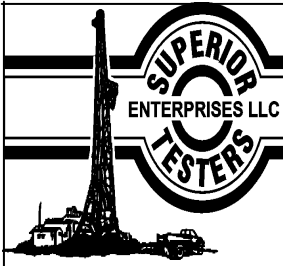
Time (Min.)	Pressure (psia)	Temp (deg F)	Annotation
0	1790.67	99.16	Initial Hydro-static
1	47.76	99.13	Open To Flow (1)
14	48.13	98.78	Shut-In(1)
75	260.80	100.05	End Shut-In(1)
76	129.29	100.02	Open To Flow (2)
105	302.49	100.90	Shut-In(2)
166	258.61	102.39	End Shut-In(2)
166	1677.62	103.34	Final Hydro-static

Recovery

Length (ft)	Description	Volume (bbl)
2.00	Mudd 100%	0.01

Gas Rates

Choke (inches)	Pressure (psia)	Gas Rate (Mcf/d)



DRILL STEM TEST REPORT

Shelby Resources
 2717 Canal Blvd. Hays Kansas 67601
 ATTN: Keith Reavis

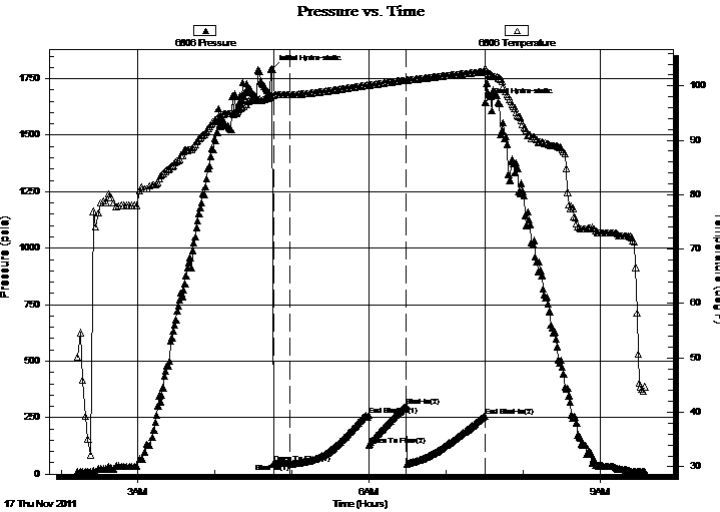
20-17s-13w-Barton
S-H unit #1-20
 Job Ticket: 17234 **DST#: 1**
 Test Start: 2011.11.17 @ 02:12:00

GENERAL INFORMATION:

Formation: **Arbuckle**
 Deviated: No Whipstock: ft (KB)
 Test Type: Conventional Bottom Hole (Initial)
 Time Tool Opened: 04:45:30 Tester: Dustin Ellis
 Time Test Ended: 09:34:30 Unit No: 3315-GB-30
 Interval: **3400.00 ft (KB) To 3433.00 ft (KB) (TVD)** Reference Elevations: 1940.00 ft (KB)
 Total Depth: 3400.00 ft (KB) (TVD) 1929.00 ft (CF)
 Hole Diameter: 7.88 inches Hole Condition: Fair KB to GR/CF: 11.00 ft

Serial #: 6806 Inside
 Press @ Run Depth: 257.13 psia @ 3429.00 ft (KB) Capacity: 5000.00 psia
 Start Date: 2011.11.17 End Date: 2011.11.17 Last Calib.: 2011.11.17
 Start Time: 02:12:00 End Time: 09:34:30 Time On Btm: 2011.11.17 @ 04:44:30
 Time Off Btm: 2011.11.17 @ 07:30:30

TEST COMMENT: 1st Open 15 minutes Weak surface blow
 1st Shut in 60 minutes No blow back
 2nd Open 30 minutes Very weak surface blow then died off
 2nd Shut in 60 minutes No blow back



PRESSURE SUMMARY

Time (Min.)	Pressure (psia)	Temp (deg F)	Annotation
0	1792.02	98.23	Initial Hydro-static
1	46.70	98.25	Open To Flow (1)
14	46.66	98.39	Shut-In(1)
75	259.46	100.16	End Shut-In(1)
76	128.13	100.15	Open To Flow (2)
105	300.96	101.09	Shut-In(2)
166	257.13	102.63	End Shut-In(2)
166	1642.94	103.22	Final Hydro-static

Recovery

Length (ft)	Description	Volume (bbl)
2.00	Mudd 100%	0.01

Gas Rates

Choke (inches)	Pressure (psia)	Gas Rate (Mcf/d)



DRILL STEM TEST REPORT

TOOL DIAGRAM

Shelby Resources
 2717 Canal Blvd. Hays Kansas 67601
 ATTN: Keith Reavis

20-17s-13w-Barton
S-H unit #1-20
 Job Ticket: 17234 **DST#: 1**
 Test Start: 2011.11.17 @ 02:12:00

Tool Information

Drill Pipe:	Length: 3123.00 ft	Diameter: 3.80 inches	Volume: 43.81 bbl	Tool Weight: 2000.00 lb
Heavy Wt. Pipe:	Length: 0.00 ft	Diameter: 0.00 inches	Volume: 0.00 bbl	Weight set on Packer: 20000.00 lb
Drill Collar:	Length: 258.00 ft	Diameter: 2.25 inches	Volume: 1.27 bbl	Weight to Pull Loose: 51000.00 lb
			<u>Total Volume: 45.08 bbl</u>	Tool Chased 0.00 ft
Drill Pipe Above KB:	9.00 ft			String Weight: Initial 51000.00 lb
Depth to Top Packer:	3400.00 ft			Final 51000.00 lb
Depth to Bottom Packer:	ft			
Interval between Packers:	33.00 ft			
Tool Length:	61.00 ft			
Number of Packers:	2	Diameter: 6.75 inches		

Tool Comments:

Tool Description	Length (ft)	Serial No.	Position	Depth (ft)	Accum. Lengths
Shut-In Tool	5.00			3377.00	
Hydraulic Tool	5.00			3382.00	
Jars	6.00			3388.00	
Safety Joint	2.00			3390.00	
Packer	5.00			3395.00	28.00 Bottom Of Top Packer
Packer	5.00			3400.00	
Perforations	28.00			3428.00	
Recorder	1.00	6806	Inside	3429.00	
Recorder	1.00	6663	Outside	3430.00	
Bull Plug	3.00			3433.00	33.00 Bottom Packers & Anchor
Total Tool Length:	61.00				



DRILL STEM TEST REPORT

FLUID SUMMARY

Shelby Resources
2717 Canal Blvd. Hays Kansas 67601
ATTN: Keith Reavis

20-17s-13w-Barton
S-H unit #1-20
Job Ticket: 17234 **DST#: 1**
Test Start: 2011.11.17 @ 02:12:00

Mud and Cushion Information

Mud Type: Gel Chem	Cushion Type:	Oil API:	deg API
Mud Weight: 9.00 lb/gal	Cushion Length: ft	Water Salinity:	ppm
Viscosity: 62.00 sec/qt	Cushion Volume: bbl		
Water Loss: 8.00 in ³	Gas Cushion Type:		
Resistivity: ohm.m	Gas Cushion Pressure: psia		
Salinity: 7800.00 ppm			
Filter Cake: 1.00 inches			

Recovery Information

Recovery Table

Length ft	Description	Volume bbl
2.00	Mudd 100%	0.010

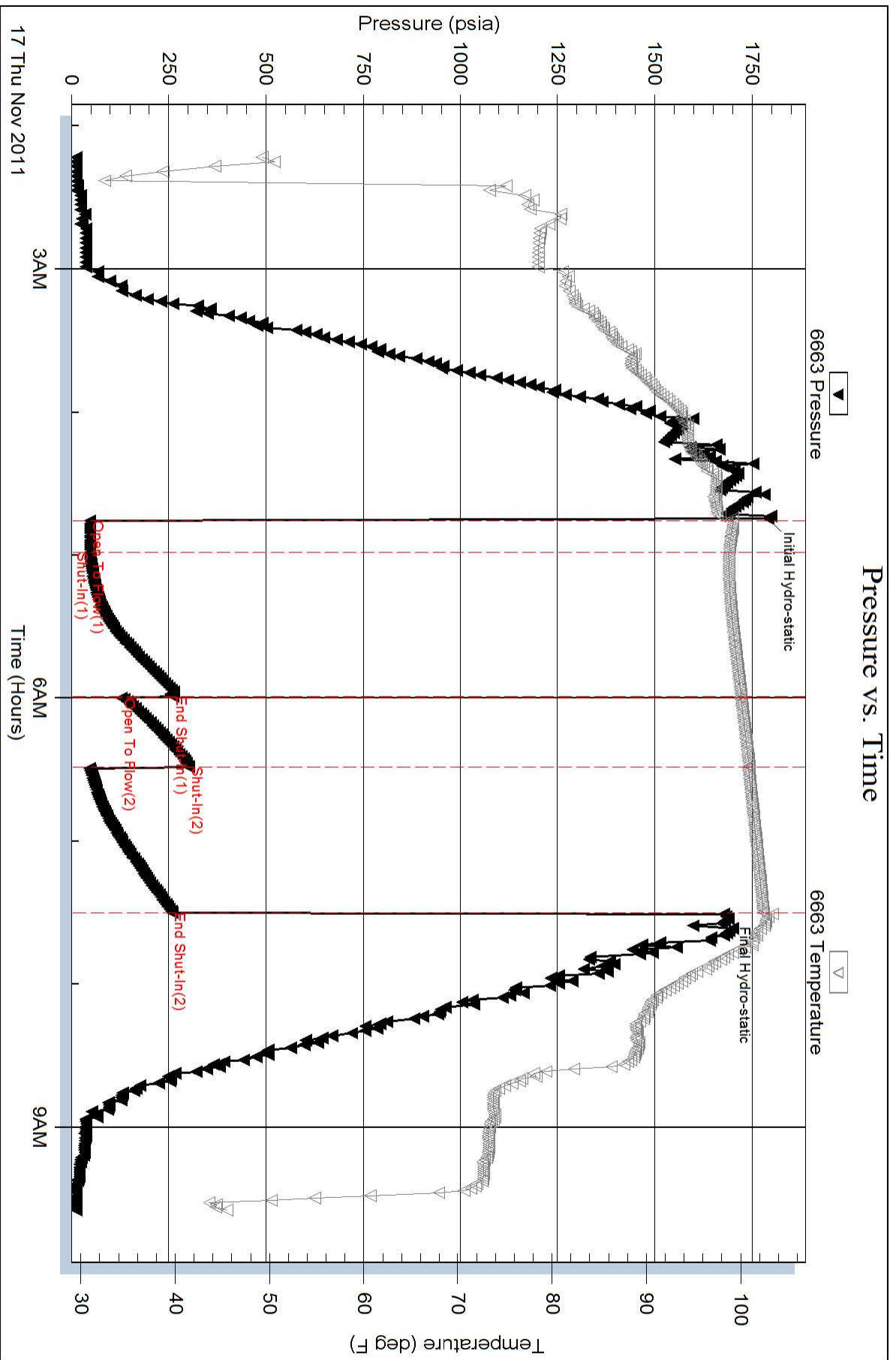
Total Length: 2.00 ft Total Volume: 0.010 bbl

Num Fluid Samples: 0 Num Gas Bombs: 0 Serial #:

Laboratory Name: Laboratory Location:

Recovery Comments:

Pressure vs. Time



Pressure vs. Time

