



**TRILOBITE  
TESTING, INC.**

# DRILL STEM TEST REPORT

Shakespeare Oil Comp Inc

**11-16s-34w Scott, Ks**

202 West Main St  
Salem, Il 62881

**Carson #1-11**

Job Ticket: 45871

**DST#: 1**

ATTN: Tim Priest

Test Start: 2012.05.09 @ 17:40:55

## GENERAL INFORMATION:

Formation: **D-E**

Deviated: No Whipstock: 0.00 ft (KB)

Time Tool Opened: 19:51:10

Time Test Ended: 00:45:40

Test Type: Conventional Bottom Hole (Initial)

Tester: Shane McBride

Unit No: 55

**Interval: 4116.00 ft (KB) To 4140.00 ft (KB) (TVD)**

Reference Elevations: 3127.00 ft (KB)

Total Depth: 4140.00 ft (KB) (TVD)

3117.00 ft (CF)

Hole Diameter: 7.88 inches Hole Condition: Fair

KB to GR/CF: 10.00 ft

**Serial #: 8368 Outside**

Press @ Run Depth: 372.48 psig @ 4117.00 ft (KB)

Capacity: 8000.00 psig

Start Date: 2012.05.09

End Date: 2012.05.10

Last Calib.: 2012.05.10

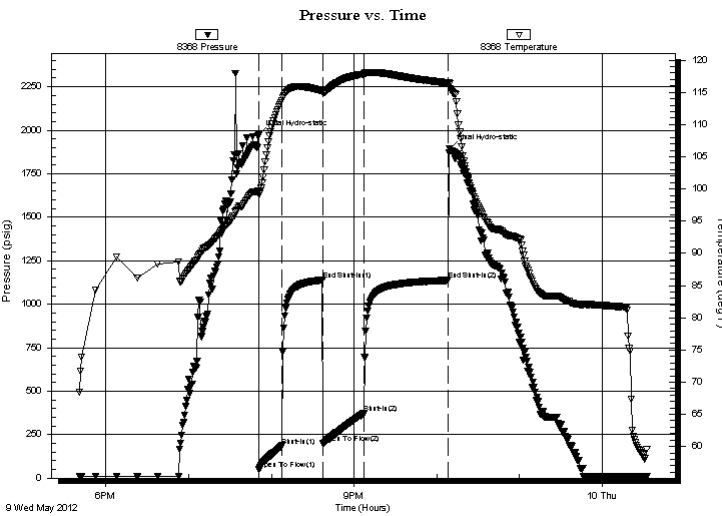
Start Time: 17:40:55

End Time: 00:32:40

Time On Btm: 2012.05.09 @ 19:50:40

Time Off Btm: 2012.05.09 @ 22:09:25

**TEST COMMENT:** B.O.B. in 9 min.  
No return  
B.O.B. in 11 min.  
No return



## PRESSURE SUMMARY

Time (Min.)	Pressure (psig)	Temp (deg F)	Annotation
0	1977.07	99.69	Initial Hydro-static
1	51.67	99.15	Open To Flow (1)
17	185.36	113.72	Shut-In(1)
47	1139.42	115.22	End Shut-In(1)
47	201.71	114.89	Open To Flow (2)
77	372.48	117.80	Shut-In(2)
138	1137.72	116.48	End Shut-In(2)
139	1895.90	116.33	Final Hydro-static

## Recovery

Length (ft)	Description	Volume (bbl)
660.00	water 100%w	8.15
90.00	s m c w 15% m 85% w	1.26

## Gas Rates

	Choke (inches)	Pressure (psig)	Gas Rate (Mcf/d)



**TRILOBITE  
TESTING, INC.**

# DRILL STEM TEST REPORT

## FLUID SUMMARY

Shakespeare Oil Comp Inc

**11-16s-34w Scott, Ks**

202 West Main St  
Salem, Il 62881

**Carson #1-11**

Job Ticket: 45871

**DST#: 1**

ATTN: Tim Priest

Test Start: 2012.05.09 @ 17:40:55

### Mud and Cushion Information

Mud Type: Gel Chem

Cushion Type:

Oil API:

0 deg API

Mud Weight: 9.00 lb/gal

Cushion Length:

ft

Water Salinity:

30000 ppm

Viscosity: 55.00 sec/qt

Cushion Volume:

bbbl

Water Loss: 8.77 in<sup>3</sup>

Gas Cushion Type:

Resistivity: 0.00 ohm.m

Gas Cushion Pressure:

psig

Salinity: 5000.00 ppm

Filter Cake: 1.00 inches

### Recovery Information

Recovery Table

Length ft	Description	Volume bbbl
660.00	water 100%w	8.147
90.00	s m c w 15% m 85% w	1.262

Total Length: 750.00 ft      Total Volume: 9.409 bbl

Num Fluid Samples: 0

Num Gas Bombs: 0

Serial #:

Laboratory Name:

Laboratory Location:

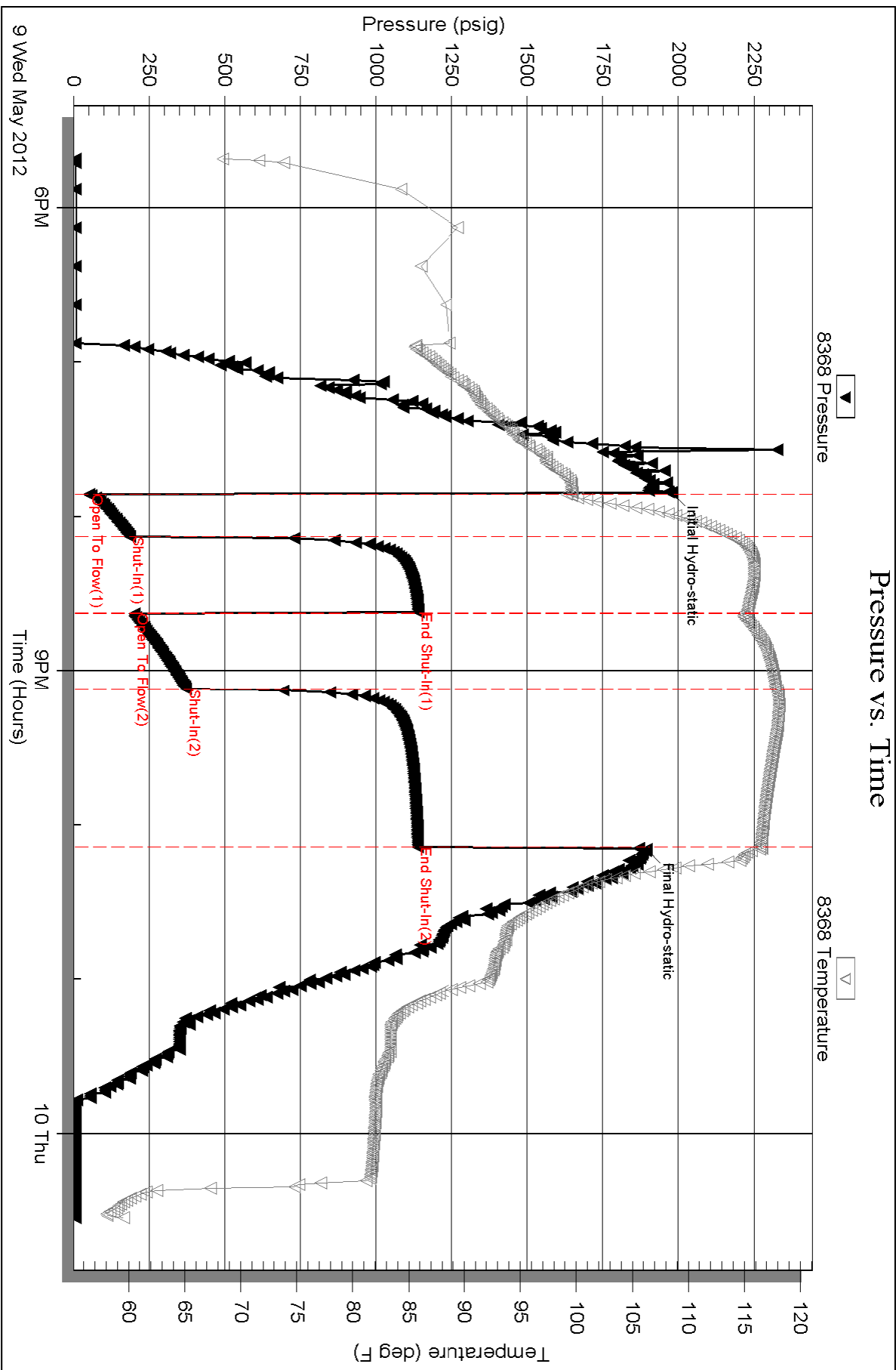
Recovery Comments: RW .265 @ 60\*f = 30,000 chlor

Serial #: 8368

Outside Shakespeare Oil Corp Inc

Carson #1-11

DST Test Number: 1



Triobite Testing, Inc

Ref. No: 45871

Printed: 2012.05.10 @ 07:59:30