



**TRILOBITE  
TESTING, INC.**

# DRILL STEM TEST REPORT

Shakespeare Oil Comp Inc

**11-16s-34w Scott, Ks**

202 West Main St  
Salem, IL  
62881  
ATTN: Tim Priest

**Carson #1-11**

Job Ticket: 45872

**DST#: 2**

Test Start: 2012.05.10 @ 22:08:18

## GENERAL INFORMATION:

Formation: **J**  
 Deviated: **No** Whipstock: **0.00 ft (KB)**  
 Time Tool Opened: 00:21:18  
 Time Test Ended: 06:10:48  
 Interval: **4289.00 ft (KB) To 4308.00 ft (KB) (TVD)**  
 Total Depth: **4308.00 ft (KB) (TVD)**  
 Hole Diameter: **7.88 inches** Hole Condition: **Fair**  
 Test Type: **Conventional Bottom Hole (Reset)**  
 Tester: **Shane McBride**  
 Unit No: **55**  
 Reference Elevations: **3127.00 ft (KB)**  
**3117.00 ft (CF)**  
 KB to GR/CF: **10.00 ft**

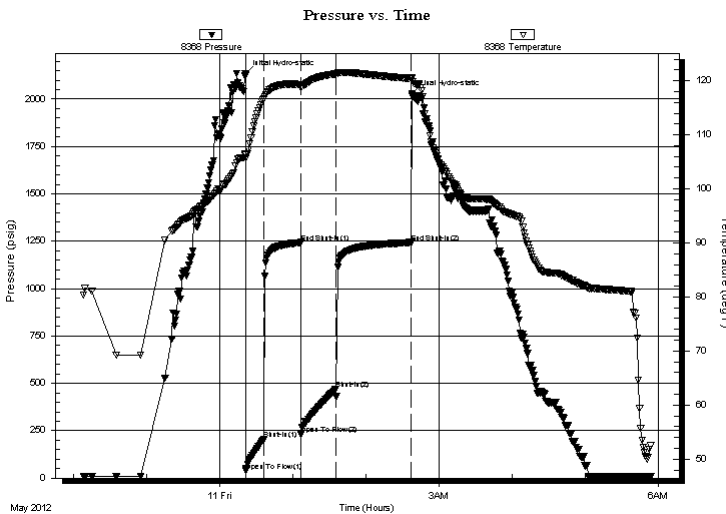
## Serial #: 8368

**Outside**

Press @ Run Depth: **470.97 psig @ 4290.00 ft (KB)** Capacity: **8000.00 psig**  
 Start Date: **2012.05.10** End Date: **2012.05.11** Last Calib.: **2012.05.11**  
 Start Time: **22:08:18** End Time: **05:53:48** Time On Btm: **2012.05.11 @ 00:21:03**  
 Time Off Btm: **2012.05.11 @ 02:38:03**

TEST COMMENT: B.O.B. in 7 min.  
 No return  
 B.O.B. in 8 1/2 min.  
 No return

## PRESSURE SUMMARY



Time (Min.)	Pressure (psig)	Temp (deg F)	Annotation
0	2131.91	106.54	Initial Hydro-static
1	38.58	105.66	Open To Flow (1)
16	205.87	116.65	Shut-In(1)
46	1243.18	119.32	End Shut-In(1)
46	229.25	118.66	Open To Flow (2)
75	470.97	121.25	Shut-In(2)
137	1243.42	120.38	End Shut-In(2)
137	2026.29	120.49	Final Hydro-static

## Recovery

Length (ft)	Description	Volume (bbl)
720.00	water 100%w	8.99
180.00	s m c w 10%m 90%w	2.52

## Gas Rates

	Choke (inches)	Pressure (psig)	Gas Rate (Mcf/d)

\* Recovery from multiple tests



**TRILOBITE  
TESTING, INC.**

# DRILL STEM TEST REPORT

**FLUID SUMMARY**

Shakespeare Oil Comp Inc

**11-16s-34w Scott, Ks**

202 West Main St  
Salem, Il  
62881  
ATTN: Tim Priest

**Carson #1-11**

Job Ticket: 45872

**DST#: 2**

Test Start: 2012.05.10 @ 22:08:18

## Mud and Cushion Information

Mud Type: Gel Chem

Cushion Type:

Oil API:

0 deg API

Mud Weight: 9.00 lb/gal

Cushion Length:

ft

Water Salinity:

27500 ppm

Viscosity: 56.00 sec/qt

Cushion Volume:

bbf

Water Loss: 8.77 in<sup>3</sup>

Gas Cushion Type:

Resistivity: 0.00 ohm.m

Gas Cushion Pressure:

psig

Salinity: 8000.00 ppm

Filter Cake: 1.00 inches

## Recovery Information

Recovery Table

Length ft	Description	Volume bbf
720.00	water 100%w	8.988
180.00	s m c w 10%m 90%w	2.525

Total Length: 900.00 ft      Total Volume: 11.513 bbf

Num Fluid Samples: 0

Num Gas Bombs: 0

Serial #:

Laboratory Name:

Laboratory Location:

Recovery Comments: RW .360 @ 50\*f= 27,500 chlor

### Pressure vs. Time

