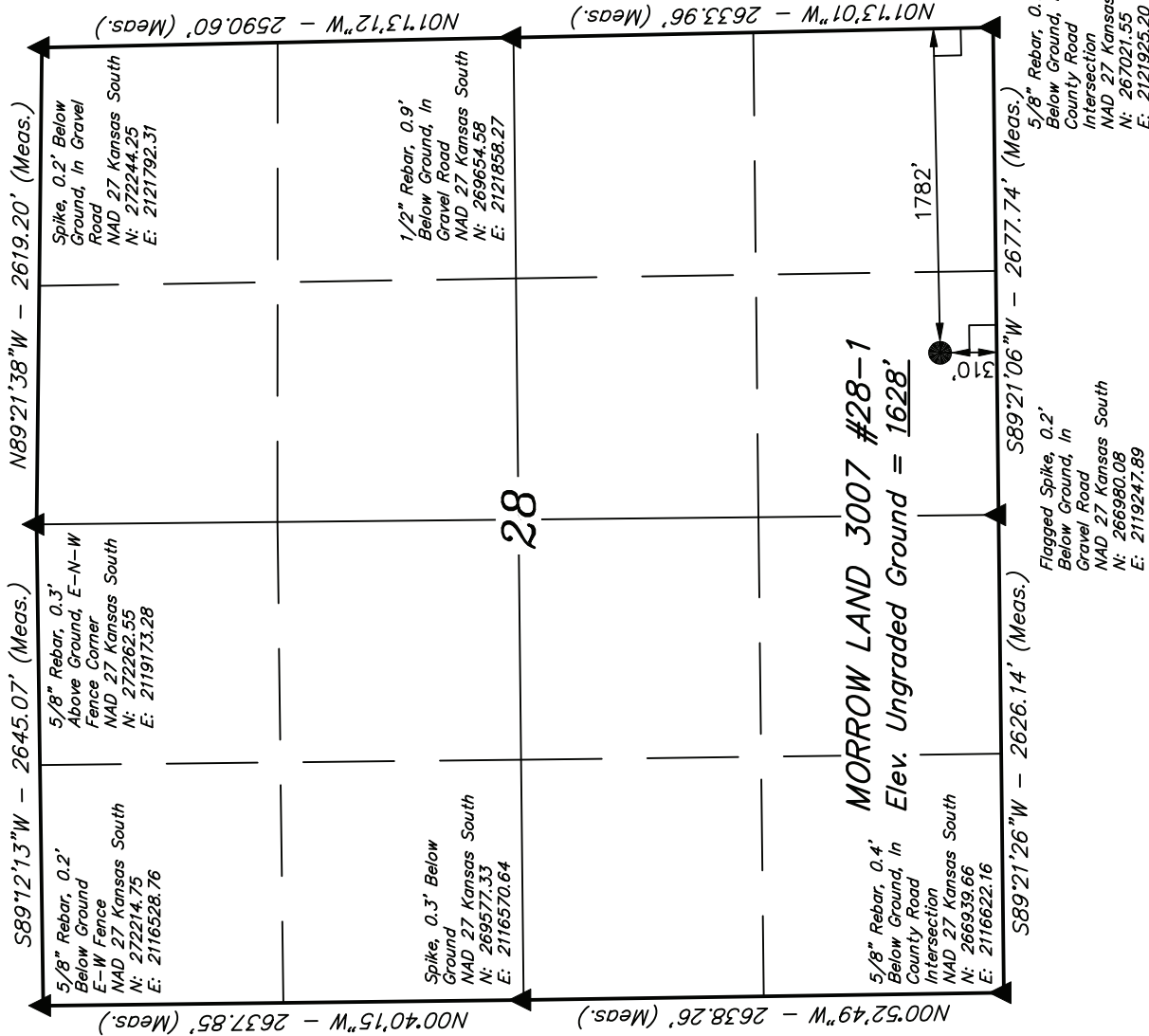


# T30S, R7W, 6th P.M.

# SGOMI

Well location, MORROW LAND 3007 #28-1, located as shown in the SW 1/4 SE 1/4 of Section 28, T30S, R7W, 6th P.M., Kingman County, Kansas.

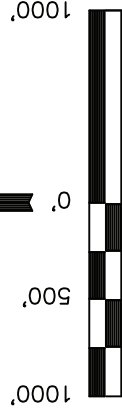


## BASIS OF ELEVATION

SPOT ELEVATION LOCATED AT THE NORTHEAST CORNER OF SECTION 22, T33S, R7W, 6th P.M. TAKEN FROM THE ANTHONY, QUADRANGLE, KANSAS, HARPER COUNTY, 7.5 MINUTE QUAD (TOPOGRAPHIC MAP) PUBLISHED BY THE UNITED STATES DEPARTMENT OF THE INTERIOR, GEOLOGICAL SURVEY. SAID ELEVATION IS MARKED AS BEING 1348 FEET.

## BASIS OF BEARINGS

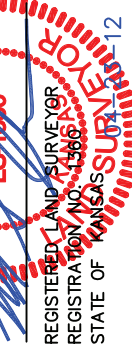
BASIS OF BEARINGS IS A G.P.S. OBSERVATION.



S C A L E

CERTIFICATE

THIS IS TO CERTIFY THAT THE ABOVE PLAN WAS PREPARED FROM FIELD NOTES OF ACTUAL SURVEYS MADE BY ME OR UNDER MY SUPERVISION AND THAT THE SAME ARE TRUE AND CORRECT TO THE BEST OF MY KNOWLEDGE AND BELIEF.



REGISTERED LAND SURVEYOR  
REGISTRATION NO. 1350  
STATE OF KANSAS

REVISED: 04-16-12

UINTAH ENGINEERING & LAND SURVEYING

85 SOUTH 200 EAST - VERNAL, UTAH 84078  
(435) 789-1017

SCALE	DATE SURVEYED:	DATE DRAWN:
1" = 1000'	11-01-11	03-01-12
PARTY	REFERENCES	
L.S. K.H. C.C.	G.L.O. PLAT	
WEATHER	FILE	
COOL	SGOMI	

NAD 83 (#28-1 SURFACE LOCATION)
LATITUDE = 37°24'00.26" (37.400072)
LONGITUDE = 98°05'12.43" (98.086786)
NAD 27 (#28-1 SURFACE LOCATION)
LATITUDE = 37°24'00.20" (37.400056)
LONGITUDE = 98°05'11.20" (98.086444)
STATE PLANE NAD 27 (KANSAS SOUTH)
N: 267303.94 E: 2120135.54

## LEGEND:

- = 90° SYMBOL
- = PROPOSED WELL HEAD.
- ▲ = SECTION CORNERS LOCATED.