

T35S, R9W, 6th P.M.

SGOMI

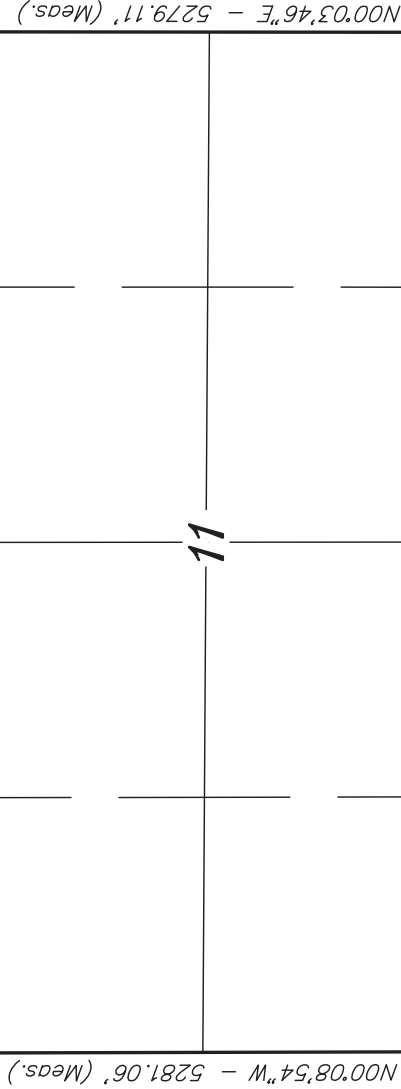
Well location, CHAIN LAND 3509 #11-1, located as shown in the NW 1/4 NW 1/4 of Section 11, T35S, R9W, 6th P.M., Harper County, Kansas.

BASIS OF ELEVATION

SPOT ELEVATION LOCATED AT THE NORTHEAST CORNER OF SECTION 22, T35S, R7W, 6th P.M. TAKEN FROM THE ANTHONY, QUADRANGLE, KANSAS, HARPER COUNTY, 7.5 MINUTE QUAD (TOPOGRAPHIC MAP) PUBLISHED BY THE UNITED STATES DEPARTMENT OF THE INTERIOR, GEOLOGICAL SURVEY. SAID ELEVATION IS MARKED AS BEING 1348 FEET.

BASIS OF BEARINGS

BASIS OF BEARINGS IS A G.P.S. OBSERVATION.



2" Alum. Cap
NAD 27 STATE PLANE
Northing: 129291.63
Easting: 2066153.13

2" Alum. Cap
NAD 27 STATE PLANE
Northing: 129277.82
Easting: 2071477.48

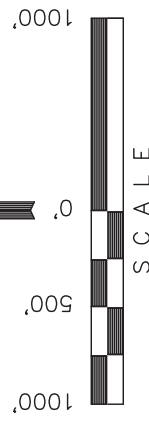
2" Alum. Cap
NAD 27 STATE PLANE
Northing: 124009.94
Easting: 2066188.67

2" Alum. Cap
NAD 27 STATE PLANE
Northing: 123999.11
Easting: 2071493.77

LEGEND:

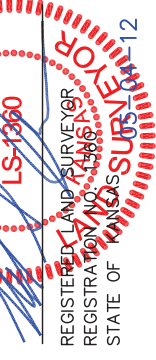
- = 90° SYMBOL
- = PROPOSED WELL HEAD.
- ▲ = SECTION CORNERS LOCATED.

NAD 83 (SURFACE LOCATION)
LATITUDE = 37°01'13.40" (37.020389)
LONGITUDE = 98°16'19.76" (98.272156)
NAD 27 (SURFACE LOCATION)
LATITUDE = 37°01'13.31" (37.020364)
LONGITUDE = 98°15'18.51" (98.271808)
STATE PLANE NAD 27
N: 128870.050 E: 2066626.85



CERTIFICATE

THIS IS TO CERTIFY THAT THE ABOVE PLAN WAS PREPARED FROM FIELD NOTES OF ACTUAL SURVEYS MADE BY ME OR UNDER MY SUPERVISION AND THAT THE SAME ARE TRUE AND CORRECT TO THE BEST OF MY KNOWLEDGE AND BELIEF.



REV: 04-30-12 J.J.
REVISED: 02-14-12

UNTAH ENGINEERING & LAND SURVEYING	
85 SOUTH 200 EAST - VERNAL, UTAH 84078 (435) 789-1017	
SCALE	DATE SURVEYED: 01-08-12
1" = 1000'	DATE DRAWN: 01-19-12
PARTY	REFERENCES
L.S. D.S. C.C.	G.L.O. PLAT
WEATHER	FILE
COLD	SGOMI