

T35S, R9W, 6th P.M.

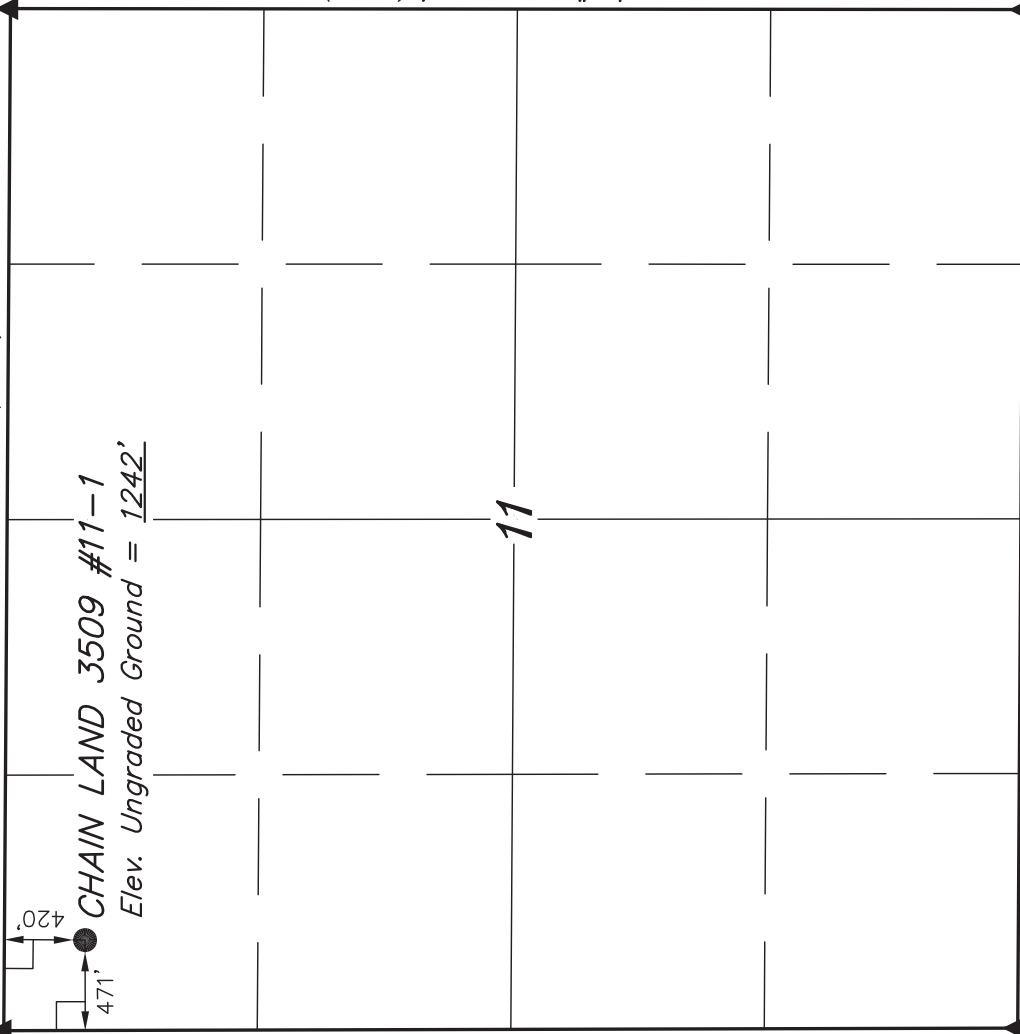
SGOMI

Well location, CHAIN LAND 3509 #11-1, located as shown in the NW 1/4 NW 1/4 of Section 11, T35S, R9W, 6th P.M., Harper County, Kansas.

2" Alum. Cap
NAD 27 STATE PLANE
Northing: 129291.63
Easting: 2066153.13

2" Alum. Cap
NAD 27 STATE PLANE
Northing: 129277.82
Easting: 2071477.48

N89°37'18"W - 5324.14' (Meas.)



BASIS OF ELEVATION

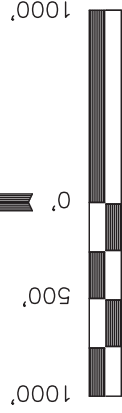
SPOT ELEVATION LOCATED AT THE NORTHEAST CORNER OF SECTION 22, T35S, R7W, 6th P.M. TAKEN FROM THE ANTHONY, QUADRANGLE, KANSAS, HARPER COUNTY, 7.5 MINUTE QUAD (TOPOGRAPHIC MAP) PUBLISHED BY THE UNITED STATES DEPARTMENT OF THE INTERIOR, GEOLOGICAL SURVEY. SAID ELEVATION IS MARKED AS BEING 1348 FEET.

BASIS OF BEARINGS

BASIS OF BEARINGS IS A G.P.S. OBSERVATION.

N00°08'54"W - 5281.06' (Meas.)

N00°03'46"E - 5279.11' (Meas.)



S C A L E

CERTIFICATE

THIS IS TO CERTIFY THAT THE ABOVE PLAN WAS PREPARED FROM FIELD NOTES OF ACTUAL SURVEYS MADE BY ME OR UNDER MY SUPERVISION AND THAT THE SAME ARE TRUE AND CORRECT TO THE BEST OF MY KNOWLEDGE AND BELIEF.



REV: 04-30-12 J.J.
REVISED: 02-14-12

2" Alum. Cap
NAD 27 STATE PLANE
Northing: 123999.11
Easting: 2071493.77

N89°38'28"W - 5304.66' (Meas.)

2" Alum. Cap
NAD 27 STATE PLANE
Northing: 124009.94
Easting: 2066188.67

UINTAH ENGINEERING & LAND SURVEYING

85 SOUTH 200 EAST - VERNAL, UTAH 84078

(435) 789-1017

LEGEND:

- = 90° SYMBOL
- = PROPOSED WELL HEAD.
- ▲ = SECTION CORNERS LOCATED.

NAD 83 (SURFACE LOCATION)	
LATITUDE = 37°01'13.40"	(37.020389)
LONGITUDE = 98°16'19.76"	(98.272156)
NAD 27 (SURFACE LOCATION)	
LATITUDE = 37°01'13.31"	(37.020364)
LONGITUDE = 98°15'18.51"	(98.271808)
STATE PLANE NAD 27	
N: 128870.050	E: 2066626.85

SCALE	DATE SURVEYED:	DATE DRAWN:
1" = 1000'	01-08-12	01-19-12
PARTY	REFERENCES	
L.S. D.S. C.C.	G.L.O. PLAT	
WEATHER	FILE	
COLD	SGOMI	