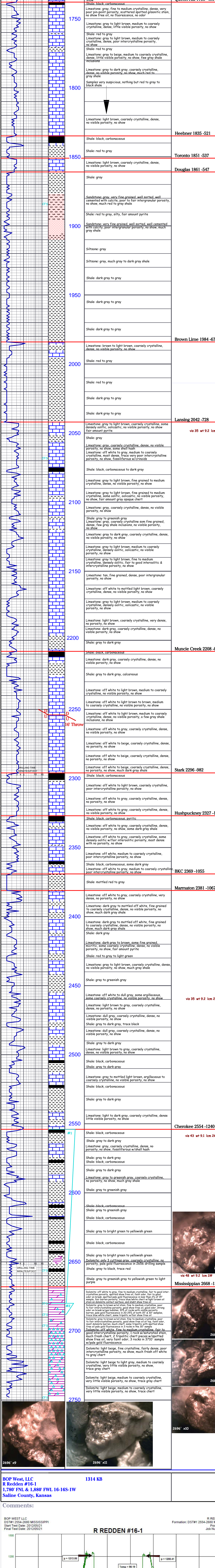
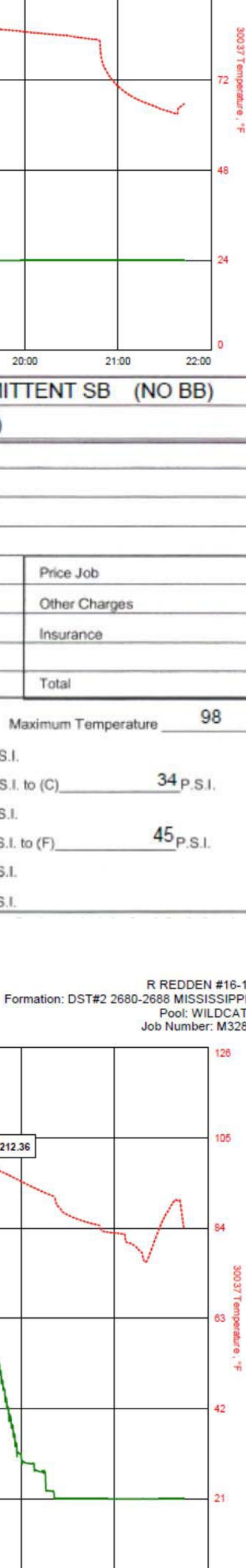




COMPANY	BOP West, LLC	ELEVATION	
LEASE	R Redden #16-1	K.B.	1314
LOCATION	1,780 FNL & 1,880 FWL	D.F.	
FIELD	Saline	G.L.	1305
SEC	16	TWP	16S
COUNTY	Saline	STATE	Kansas
CONTRACTOR	C & G Drilling, RR #2	LOG	DEPTH MEASURED FROM KB
SPUD	5-17-12	COMP	5-29-12
SAMPLES SAVED FROM	1200' TO	RTD	
FORMATION	DM 100%	DRYDR	

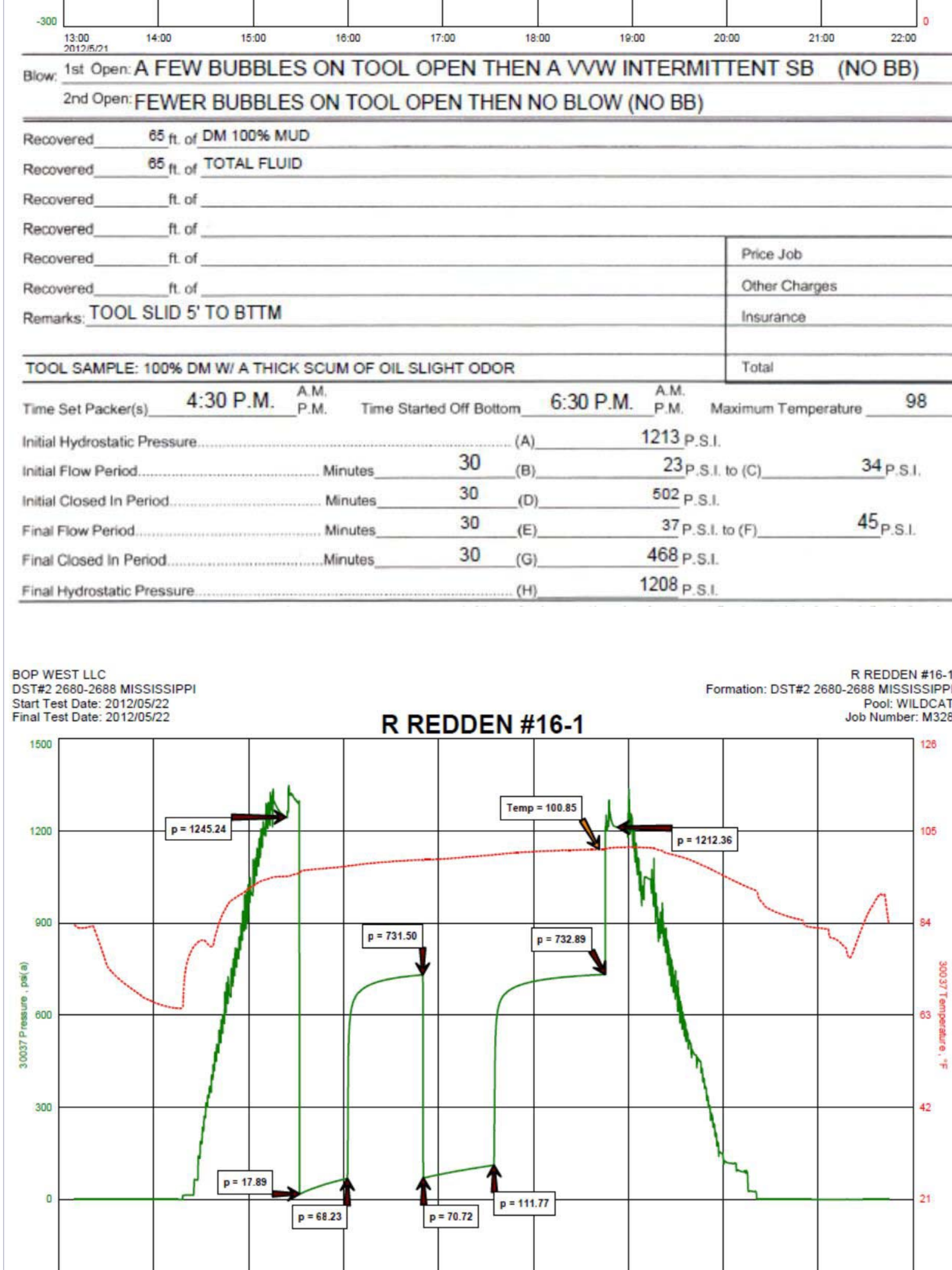


1700	Limestone: light brown to gray, some coarsely crystalline, some fine grained w/fair intergranular porosity, no show, fair amount pyrite, fossiliferous w/crinoids shale gray to green.	
1750	Limestone: gray to light brown, medium crystalline, poor intercrystalline porosity, no show.	
1800	Limestone: off white to light brown, chalky to coarsely crystalline, most dense w/ no visible porosity, no show.	
1850	Shale: black, carbonaceous	
1885	Shale: red to gray	
1900	Limestone: light brown, coarsely crystalline, dense, no visible porosity, no show.	
1950	Shale: gray	
2000	Limestone: brown to light brown, coarsely crystalline, dense, no visible porosity, no show.	
2050	Limestone: gray to light brown, coarsely crystalline, some densely oolitic, oolitic, no visible porosity, no show, fair amount pyrite.	vis 35 wt 9.2 lcm 1#
2100	Limestone: gray, coarsely crystalline, dense, no visible porosity, no show.	
2150	Limestone: gray to light brown, medium to coarsely crystalline, dense, no visible porosity, no show.	
2200	Limestone: light brown, coarsely crystalline, very dense, no porosity, no show.	
2250	Shale: black, carbonaceous	
2300	Limestone: off white to light brown, medium to coarsely crystalline, no visible porosity, no show.	
2350	Limestone: off white to gray, coarsely crystalline, dense, no visible porosity, no show.	
2400	Limestone: dark gray to mottled off white, fine grained to coarsely crystalline, dense, no visible porosity, no show, much dark gray shale	
2450	Limestone: off white to dull gray, some argillaceous, some coarsely crystalline, no visible porosity, no show.	vis 35 wt 9.2 lcm 2#
2500	Limestone: light brown to gray, coarsely crystalline, dense, no visible porosity, no show.	
2550	Limestone: light to dark gray, coarsely crystalline, dense little visible porosity, no show.	
2600	Shale: black, carbonaceous	
2650	Shale: gray to bright green to yellowish green	
2700	Dolomite: off white to gray, fine to medium crystalline, fair to good intercrystalline porosity, no show, trace gray chert	
2750	Dolomite: light beige, medium to coarsely crystalline, very little visible porosity, no show, trace gray chert	



BOP West, LLC R Redden #16-1, 1,780 FNL & 1,880 FWL 16-16S-1W Saline County, Kansas 1314 KB

Comments:



Blow:	1st Open: A FEW BUBBLES ON TOOL OPEN THEN A VVV INTERMITTENT 2ND (NO BB)	
	2nd Open: A VWS THAT BUILT TO 4 1/2" (NO BB)	
Recovered:	65 ft. of DM 100% MUD	
Recovered:	65 ft. of TOTAL FLUID	
Recovered:	ft. of	
Recovered:	ft. of	
Recovered:	ft. of	Price Job
Recovered:	ft. of	Other Charges
Remarks:	TOOL SLID 5' TO BITM	Insurance
TOOL SAMPLE: 100% DM W/ A THICK SCUM OF OIL SLIGHT ODOUR		
Time Set Packer(s):	4:30 P.M.	Time Started Off Bottom: 6:30 P.M.
Initial Hydrostatic Pressure:	(A) 1213 P.S.I.	Maximum Temperature: 98
Initial Flow Period:	Minutes 30 (B) 23 P.S.I. to (C)	34 P.S.I.
Initial Closed In Period:	Minutes 30 (D) 502 P.S.I.	
Final Flow Period:	Minutes 30 (E) 37 P.S.I. to (F)	45 P.S.I.
Final Closed In Period:	Minutes 30 (G) 468 P.S.I.	
Final Hydrostatic Pressure:	(H) 1208 P.S.I.	

Blow:	1st Open: GSB, INC. TO 5 1/2" (NO BB)	
	2nd Open: A VWS THAT BUILT TO 4 1/2" (NO BB)	
Recovered:	15 ft. of CO 100% OIL	
Recovered:	247 ft. of SOCMW 5% OIL, 77% WTR, 18% MUD	
Recovered:	252 ft. of TOTAL FLUID	
Recovered:	ft. of	
Recovered:	ft. of CHLOR: 25,000 PPM	Price Job
Recovered:	ft. of PH:7.0	Other Charges
Remarks:	RW: 22 @ 92°	Insurance
TOOL SAMPLE: 2% GAS, 45% OIL, 23% WTR, 30% MUD		
Time Set Packer(s):	5:30 A.M.	Time Started Off Bottom: 8:30 A.M.
Initial Hydrostatic Pressure:	(A) 1245 P.S.I.	Maximum Temperature: 101
Initial Flow Period:	Minutes 30 (B) 18 P.S.I. to (C)	68 P.S.I.
Initial Closed In Period:	Minutes 45 (D) 732 P.S.I.	
Final Flow Period:	Minutes 45 (E) 71 P.S.I. to (F)	112 P.S.I.
Final Closed In Period:	Minutes 30 (G) 733 P.S.I.	
Final Hydrostatic Pressure:	(H) 1212 P.S.I.	

DIAMOND TESTING
 P.O. Box 157
 HOISINGTON, KANSAS 67544
 (800) 542-7313
DRILL-STEM TEST TICKET
 FILE: RRDDN16-1DST2