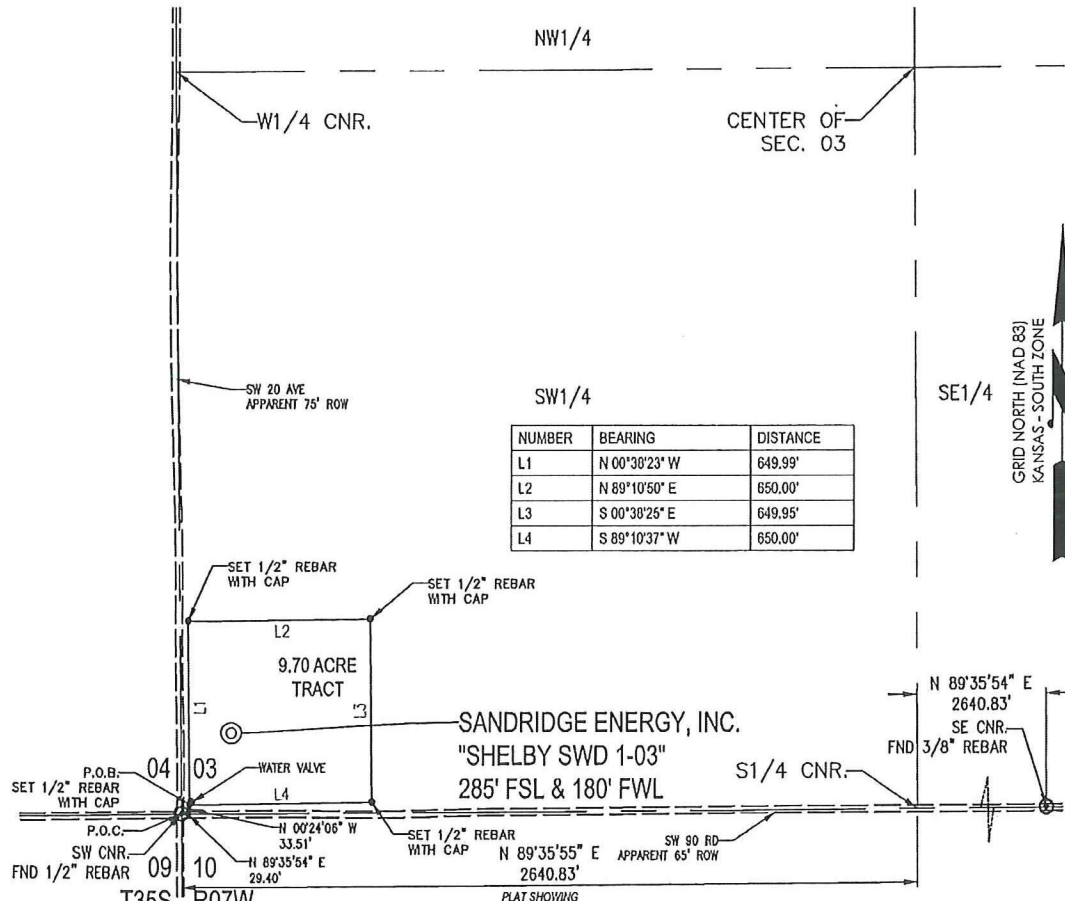


T 35 S - R 07 W



9.70 ACRE TRACT OF LAND IN THE
 SW1/4 OF SECTION 03, T35S-R07W,
 HARPER COUNTY, KANSAS

METES AND BOUNDS DESCRIPTION (9.70 ACRE TRACT)

PART OF THE SW 1/4 OF SECTION 03, TOWNSHIP 35 SOUTH, RANGE 07 WEST, HARPER COUNTY, KANSAS, MORE PARTICULARLY DESCRIBED AS FOLLOWS:

COMMENCING AT THE SW CORNER OF SAID SECTION 03;
 THENCE N 89°35'54" E ALONG THE SOUTH LINE OF SAID SECTION 03, A DISTANCE OF 29.40 FEET;
 THENCE N 00°24'06" W, A DISTANCE OF 33.51 FEET TO THE POINT OF BEGINNING;
 THENCE N 00°38'23" W, A DISTANCE OF 649.99 FEET;
 THENCE N 89°10'50" E, A DISTANCE OF 650.00 FEET;
 THENCE S 00°38'25" E, A DISTANCE OF 649.95 FEET;
 THENCE S 89°10'37" W, A DISTANCE OF 650.00 FEET TO THE POINT OF BEGINNING.

SAID TRACT CONTAINING 9.70 ACRES MORE OR LESS OF LAND AS SURVEYED.

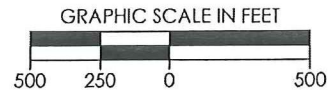
THE COORDINATES ARE BASED ON NAD83 STATE PLANE COORDINATE SYSTEM AS PROCESSED BY OPUS USING THESE STATIONS: AF9518 LMNO LAMONT CORS ARP, AF9525 VCIO VICI CORS ARP, & AF9562 HVLK HAVILAND CORS ARP

SURVEYOR'S CERTIFICATE:

I, C. ED GRAY, KANSAS LICENSED PROFESSIONAL LAND SURVEYOR, NO. 1404, DO HEREBY CERTIFY THAT THIS PLAT REPRESENTS THE RESULTS OF A SURVEY MADE ON THE GROUND UNDER MY SUPERVISION ON THE DATE OF 03-27-2012.

GENERAL NOTES:

THE TIES AND FOOTAGES SHOWN ON THIS PLAT ARE FROM LINES OF OCCUPATION FROM A SURVEY MADE ON THE GROUND AND / OR BEARING AND DISTANCES FROM THE GENERAL LAND OFFICE PLAT OF THE AREA SHOWN AND MAY NOT BE THE ACTUAL PROPERTY CORNERS. THIS PLAT DOES NOT REPRESENT A TRUE BOUNDARY SURVEY.



REVISION		SandRidge	
△	ADDED BHL (03-27-2012)	"SHELBY SWD 1-03" PART OF THE SW 1/4 OF SECTION 03, T-35-S, R-07-W PROPOSED DRILL SITE HARPER COUNTY, KANSAS	
SCALE: 1" = 500'		DRAWN BY: S.ANDER	
PLOT DATE: 03-27-2012		SHEET NO.: 1 OF 1	