

# GREAT GUNS

## R A Guard Log

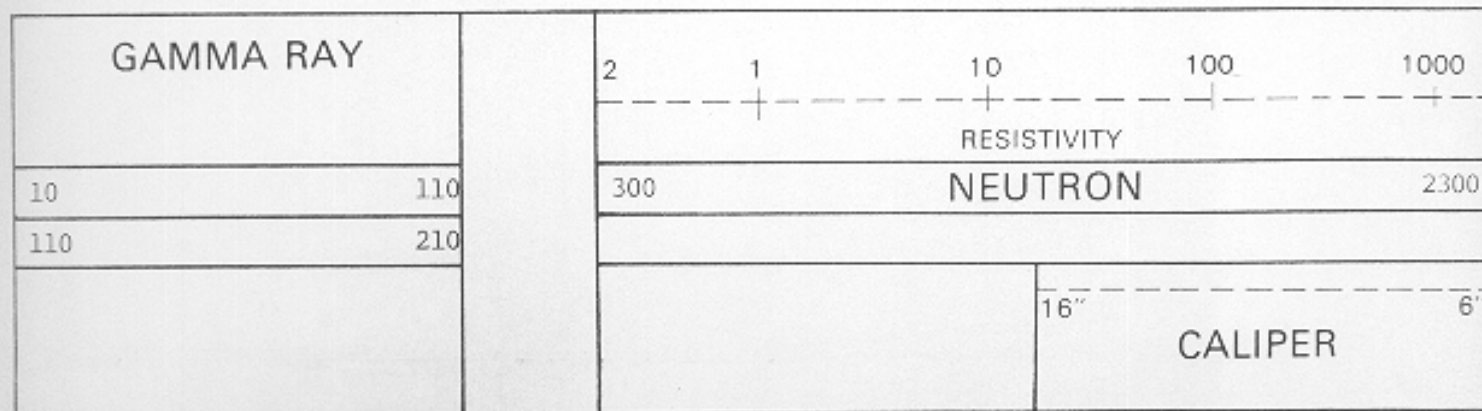
FILE NO.	COMPANY <u>C. P. I.</u>		
	WELL <u>KRILEY 'E' NO. 1</u>		
	FIELD _____		
	COUNTY <u>ROOKS</u>	STATE <u>KANSAS</u>	
	LOCATION: <u>SE-SE-SE</u>		OTHER SERVICES
	SEC <u>20</u>	TWP <u>7S</u>	RGE <u>17W</u>

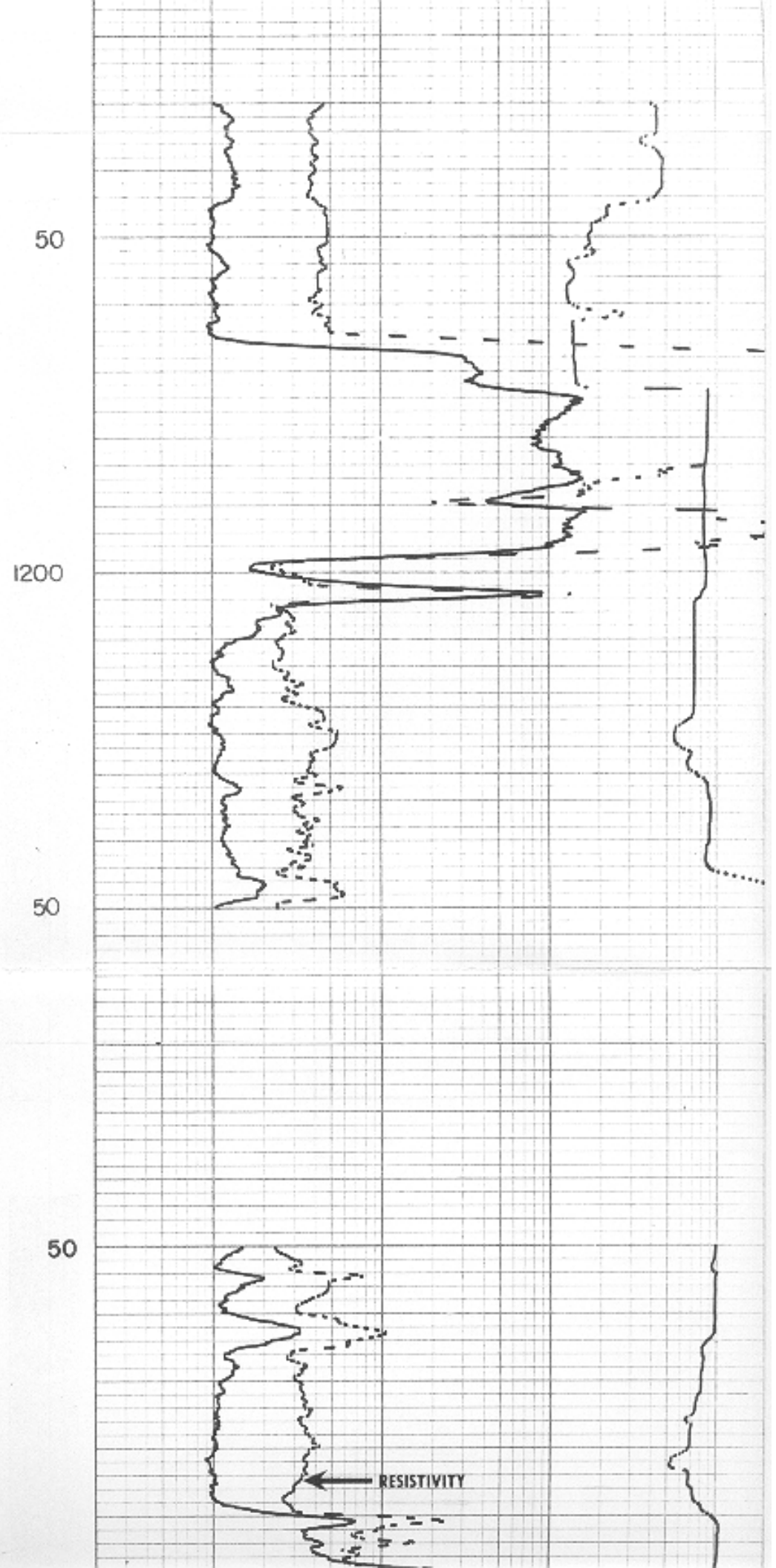
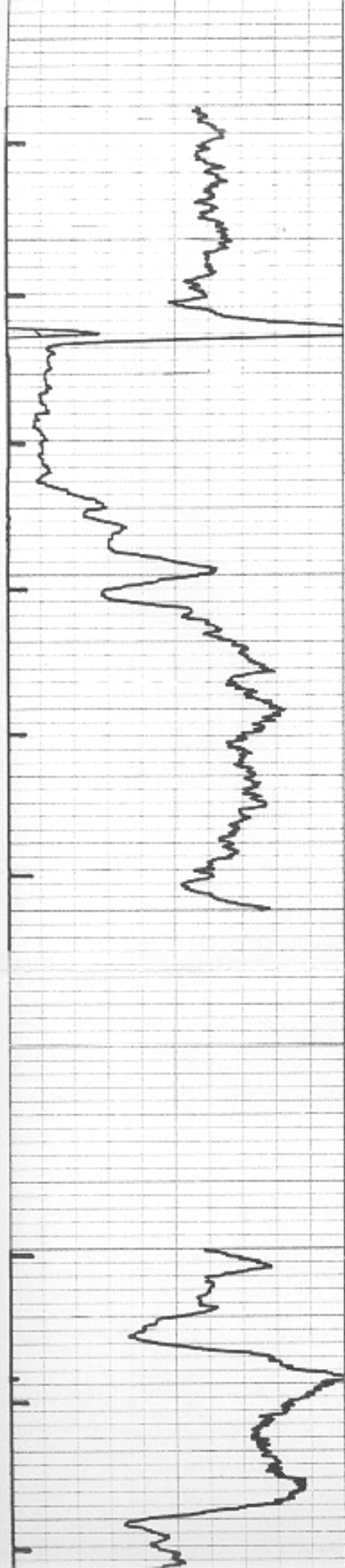
Permanent Datum <u>GROUND LEVEL</u>	Elev. <u>1763</u>	Elevations: KB <u>1768</u>
Log Measured from <u>KELLY BUSHING 5</u>	Ft. Above Permanent Datum	DF <u>--</u>
Drilling Measured from <u>KELLY BUSHING</u>		GL <u>1763</u>

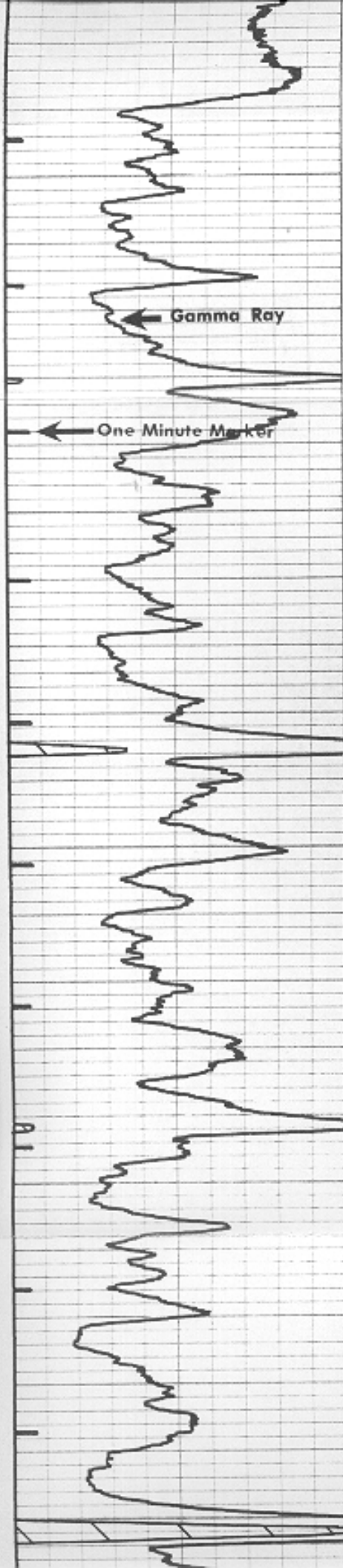
Date	GAMMA RAY	NEUTRON	GUARD	CALIPER
1-5-82	ONE	ONE	ONE	ONE
Run No.	ONE	ONE	ONE	ONE
Depth—Driller	3281	3281	3281	3281
Depth—Logger	3278	3278	3278	3278
Bottom Logged Interval	3269	3277	3273	3266
Top Logged Interval	2650	2650	2650	2650
Casing—Driller	@	@	8-5/8@ 757	@
Casing—Logger			757	
Bit Size			7-7/8	
Type Fluid in Hole			SALT GEL STARCH	
Density and Viscosity			10.9 52	
pH and Fluid Loss		cc	7.0 14.4cc	cc
Source of Sample			FLOW LINE	
Rm @ Meas. Temp.	@ °F	@ °F	.47 @ 68 °F	@ °F
Rmf @ Meas. Temp.	@ °F	@ °F	.35 @ 68 °F	@ °F
Rmc @ Meas. Temp.	@ °F	@ °F	.82 @ 68 °F	@ °F
Source of Rmf and Rmc			CHARTS	
Rm @ BHT	@ °F	@ °F	.31 @ 103 °F	@ °F
Time Since Circ.			2 HOURS	
Max. Rec. Temp. Deg. F.		°F	103 °F	°F
Equip No. and Location			45 HAYS	
Recorded By			D. SCHUKMAN	
Witnessed By			MR. ERIC WADDELL	

Great Guns does not guarantee the accuracy of any interpretation of log data, conversion of log data to physical rock parameters, or recommendations which may be given by Great Guns personnel or which may appear on the log or in any other form. Any user of such data, interpretations, conversions, or recommendations agrees that Great Guns is not responsible except where due to negligence or willful misconduct, for any loss, damages, or expenses resulting from the use thereof.

REMARKS											
Changes in Mud Type or Additional Samples						Scale Changes					
Date	Sample No.	1-5				Type Log	Depth	Scale Up Hole	Scale Down Hole		
Depth-Driller	3281										
Type Fluid in Hole	SALT-GEL STARCH										
Dens.	Visc.	10.9	52								
pH	Fluid Loss	7.0	14.4 cc		cc						
Source of Sample	FLOW LINE					Equipment Data					
Rm @ Meas. Temp.	.47 @ 68 °F	@	°F	Run. No.		Tool Type	Pad Type	Tool Position	Other		
Rmf @ Meas. Temp.	.35 @ 68 °F	@	°F								
Rmc @ Meas. Temp.	.82 @ 68 °F	@	°F								
Source Rmf	Rmc	CHARIS									
Rm @ BHT	.31 @ 103 °F	@	°F								
Rmf @ BHT	.23 @ 103 °F	@	°F								
Rmc @ BHT	.54 @ 103 °F	@	°F								
EQUIPMENT DATA											
Gamma Ray						Neutron					
Run No.	ONE					Run No.	ONE				
Tool Model No.	GCN56XU4A					Log Type	NEU-NEU				
Diameter	3.5 IN.					Tool Model No.	GCN56XU4A				
Detector Model No.	A. P. A.					Diameter	3.5 IN.				
Type	SCINTILLATION					Detector Model No.	H. S. P.				
Length	3 IN.					Type	PROPORTIONAL				
Distance to N. Source	107 IN.					Length	6 IN.				
						Source Model No.	SEALED				
						Serial No.	040				
						Spacing	17 IN.				
						Type	AM BE				
						Strength	3 CURIES				
LOGGING DATA											
General				Gamma Ray				Neutron			
Run No.	Depths		Speed Ft/Min.	T. C. Sec.	Sens. Settings	Zero Div. L or R	API G.R. Units per Log Div.	T. C. Sec.	Sens. Settings	Zero Div. L or R	API N. Units per Log Div.
ONE	From	To	20	3	.90	1 I.	10 P.D.	2	.20	2 R	100 P.D.







2700

Gamma Ray

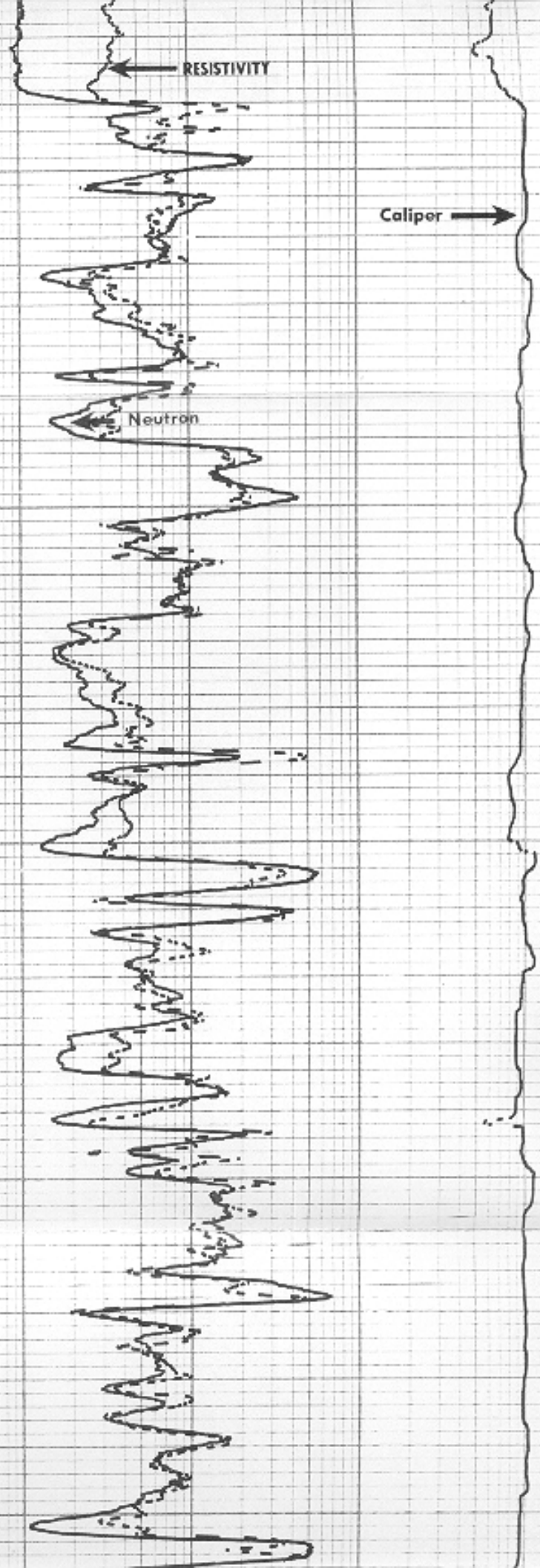
One Minute Marker

50

2800

50

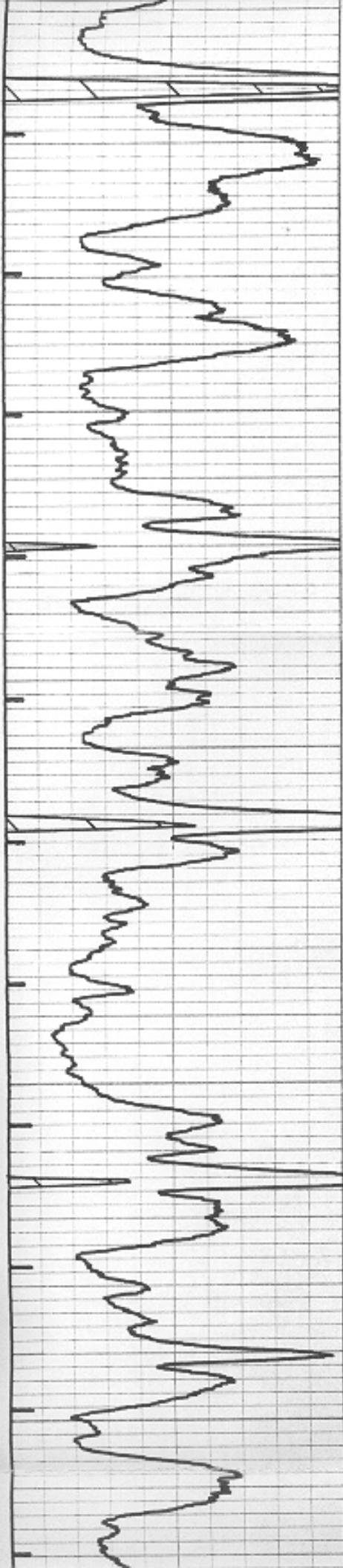
2900



RESISTIVITY

Caliper

Neutron



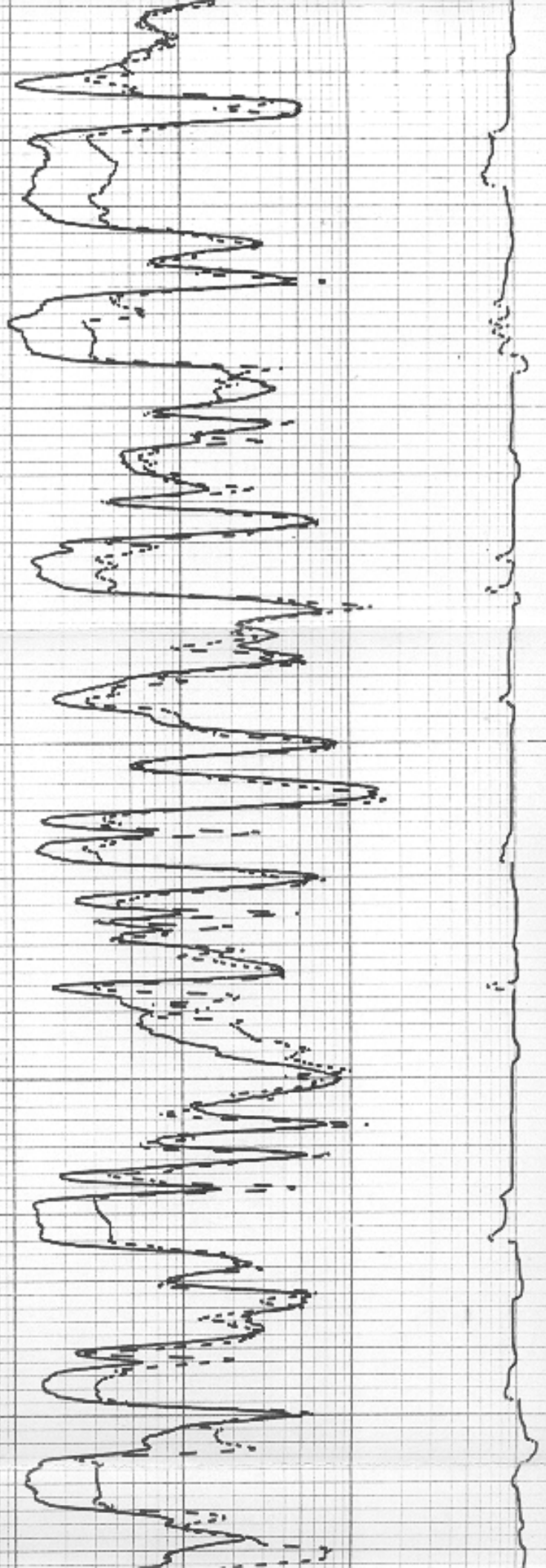
2900

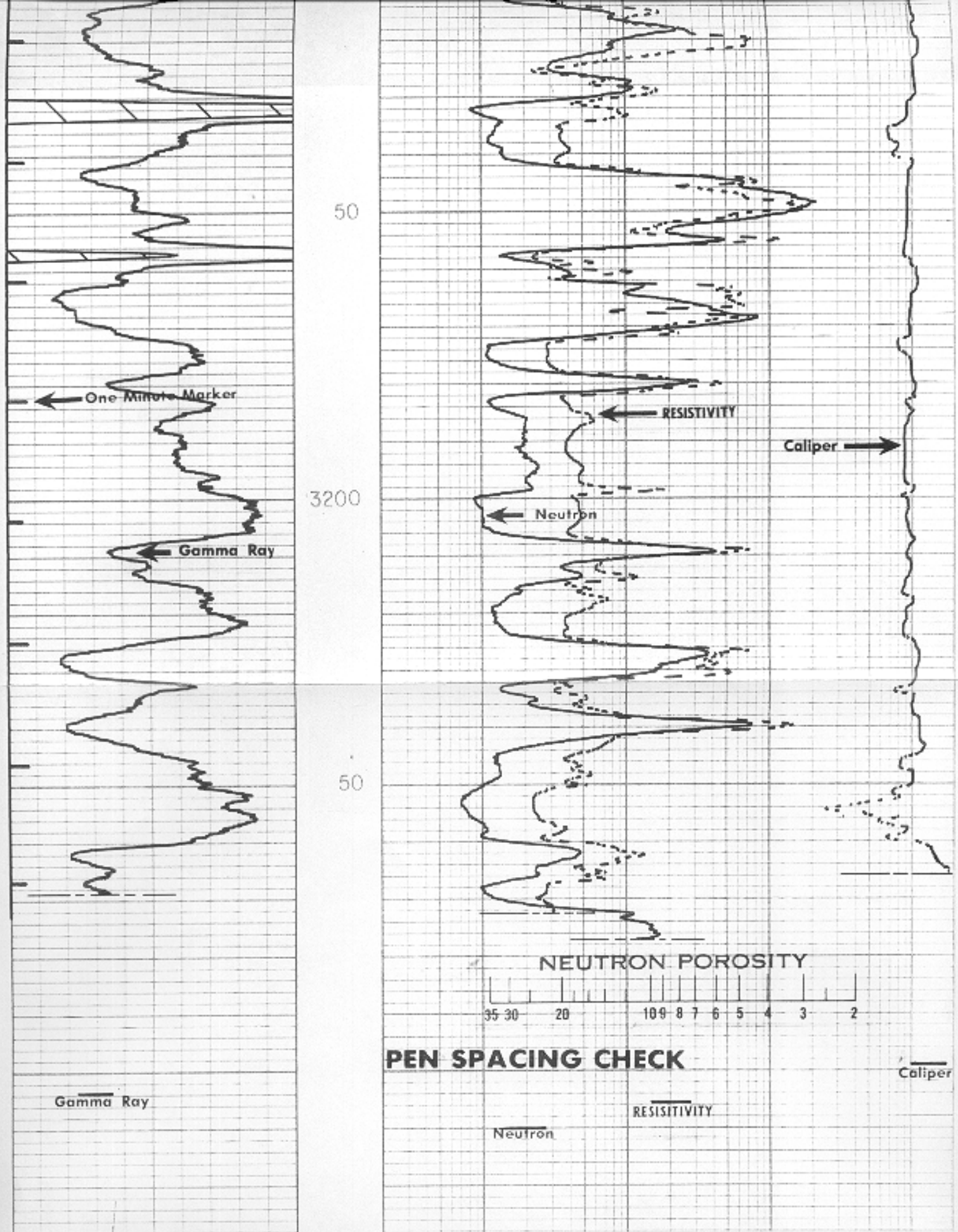
50

3000

50

3100





Gamma Ray

Neutron

RESISTIVITY

Caliper

GAMMA RAY

.2 1 10 100 1000

RESISTIVITY