



INVOICE

24 S. Lincoln Street
 P.O. Box 31
 Russell, KS 67665-2906

Invoice Number: 128484
 Invoice Date: Sep 9, 2011
 Page: 1

Voice: (817) 546-7282
 Fax: (817) 246-3361

Bill To:
Carrie Exploration & Development LLC 210 West 22nd Street Hays, KS 67601

Federal Tax I.D.#: 20-5975804

Customer ID	Well Name# or Customer P.O.	Payment Terms	
Carrie	John Roth #C-Z	Net 30 Days	
Job Location	Camp Location	Service Date	Due Date
KS2-01	Great Bend	Sep 9, 2011	10/9/11

Quantity	Item	Description	Unit Price	Amount
175.00	MAT	Class A Common	16.25	2,843.75
3.00	MAT	Gel	21.25	63.75
6.00	MAT	Chloride	58.20	349.20
184.00	SER	Handling	2.25	414.00
10.00	SER	Mileage 184 sx @.11 per sk per mi	20.24	202.40
1.00	SER	Surface	1,125.00	1,125.00
10.00	SER	Pump Truck Mileage	7.00	70.00
1.00	OPER ASSIST	Bobby Roller		
1.00	OPER ASSIST	Dustin Chambers		
1.00	OPER ASSIST	Kevin Weighous		
1.00	OPER ASSIST	Shane Konzen		

Subtotal	5,068.10
Sales Tax	237.74
Total Invoice Amount	5,305.84
Payment/Credit Applied	
TOTAL	5,305.84

ALL PRICES ARE NET, PAYABLE
 30 DAYS FOLLOWING DATE OF
 INVOICE. 1 1/2% CHARGED
 THEREAFTER. IF ACCOUNT IS
 CURRENT, TAKE DISCOUNT OF

\$ 1149.82

ONLY IF PAID ON OR BEFORE
 Oct 4, 2011

pd 4156.02
 # 2733
 9-19-11

ALLIED CEMENTING CO., LLC. 037360

Federal Tax I.D.# 20-5975804

REMIT TO P.O. BOX 31
RUSSELL, KANSAS 67665

SERVICE POINT:
Creat Bend KS

DATE <u>9-9-11</u>	SEC <u>34</u>	TWP. <u>19</u>	RANGE <u>11</u>	CALLED OUT	ON LOCATION	JOB START <u>4:30pm</u>	JOB FINISH <u>5:00pm</u>
LEASE <u>John Roth</u>	WELL # <u>C-2</u>	LOCATION <u>Ellenwood ks 2 East to Rd 130</u>			COUNTY <u>Barton</u>	STATE <u>KS</u>	
OLD OR <input checked="" type="radio"/> NEW (Circle one)			<u>1/2 north East into</u>				

CONTRACTOR Southern Rig #6
 TYPE OF JOB Surface
 HOLE SIZE 12 1/4 T.D. 260
 CASING SIZE 8 5/8 DEPTH 257
 TUBING SIZE DEPTH
 DRILL PIPE 4 1/2 DEPTH 260
 TOOL DEPTH
 PRES. MAX MINIMUM
 MEAS. LINE SHOE JOINT
 CEMENT LEFT IN CSG. 16QT
 PERFS.
 DISPLACEMENT Freshwater

OWNER Carrie Exploration and Development

CEMENT
 AMOUNT ORDERED 175 ~~sq~~ Com 3% ce 2% gel

EQUIPMENT
 PUMP TRUCK CEMENTER Bob R
 # 366 HELPER Shane / Dustin
 BULK TRUCK
 # 341 DRIVER Steve W
 BULK TRUCK
 # DRIVER

COMMON	<u>175</u>	@ <u>16.25</u>	<u>2,847.75</u>
POZMIX		@	
GEL	<u>3</u>	@ <u>21.25</u>	<u>63.75</u>
CHLORIDE	<u>6</u>	@ <u>58.20</u>	<u>349.20</u>
ASC		@	
		@	
		@	
		@	
		@	
		@	
		@	
HANDLING	<u>184</u>	@ <u>2.25</u>	<u>414.00</u>
MILEAGE	<u>184 x 10 x .11</u>		<u>202.40</u>
TOTAL			<u>3,877.10</u>

REMARKS:

Break circulation with Rig mud.
Head up to cement Pump mix 175 ~~sq~~ com
3% ce 2% gel. shut down Release plug
change valves. Displace with 15.42 bbls
fresh water. Shut in. Cement did
circulate.

SERVICE

DEPTH OF JOB	<u>257</u>		
PUMP TRUCK CHARGE			<u>1,125.00</u>
EXTRA FOOTAGE		@	
MILEAGE <u>Hum</u>	<u>10</u>	@ <u>7.00</u>	<u>70.00</u>
MANIFOLD		@	
		@	
		@	

CHARGE TO: Carrie Exploration
 STREET _____
 CITY _____ STATE _____ ZIP _____

TOTAL 1,195.00

PLUG & FLOAT EQUIPMENT

<u>Rubber plug</u>	@		
	@		
	@		
	@		



PAGE	CUST NO	INVOICE DATE
1 of 1	1005952	09/21/2011
INVOICE NUMBER		
1718 - 90704142		

Pratt (620) 672-1201
 B CARRIE EXPLORATION & DEVELOPMENT LLC
 I 210 W 22ND ST
 L HAYS
 L KS US 67601
 T
 o ATTN: HEROLD

J LEASE NAME John Roth C 2
 O LOCATION
 B COUNTY Barton
 S STATE KS
 I JOB DESCRIPTION Cement-New Well Casing/Pi
 T JOB CONTACT
 E

JOB #	EQUIPMENT #	PURCHASE ORDER NO.	TERMS	DUE DATE
40371847	19905		Net - 30 days	10/21/2011

	QTY	U of M	UNIT PRICE	INVOICE AMOUNT
<i>For Service Dates: 09/16/2011 to 09/16/2011</i>				
0040371847				
171804823A Cement-New Well Casing/Pi 09/16/2011 Longstring				
AA2 Cement	125.00	EA	17.00	1,593.75 T
60/40 POZ	30.00	EA	12.00	270.00 T
C-41P	30.00	EA	4.00	90.00 T
Salt	575.00	EA	0.50	215.63 T
C-44	89.00	EA	5.15	343.76 T
FLA-322	59.00	EA	7.50	331.88 T
Gilsonite	625.00	EA	0.67	314.06 T
Flow-Seal 21 (Sodium Silicate)	300.00	EA	8.00	1,800.00 T
Claymax KCL Substitute	1.00	EA	35.00	26.25 T
Top Rubber Cement Plug 5 1/2"	1.00	EA	105.00	78.75
Guide Shoe-Regular 5 1/2" (Blue)	1.00	EA	250.00	187.50
5 1/2" Port Collar	1.00	EA	3,500.00	2,625.00
Flapper Type Insert Float Valves 5 1/2"	1.00	EA	215.00	161.25
Turbolizer 5 1/2" (Blue)	6.00	EA	110.00	495.00
5 1/2" Basket (Blue)	1.00	EA	290.00	217.50
Unit Mileage Charge-Pickups, Vans & Cars	55.00	HR	4.25	175.31
Heavy Equipment Mileage	110.00	MI	7.00	577.50
Proppant and Bulk Delivery Charges	396.00	MI	1.60	475.20
Depth Charge; 3001-4000'	1.00	HR	2,160.00	1,620.00
Blending & Mixing Service Charge	155.00	MI	1.40	162.75
Casing Swivel Rental	1.00	EA	200.00	150.00
Plug Container Utilization Charge	1.00	EA	250.00	187.50
Supervisor	1.00	HR	175.00	131.25

*10-10-11
2758*

PLEASE REMIT TO:	SEND OTHER CORRESPONDENCE TO:	SUB TOTAL	12,229.84
BASIC ENERGY SERVICES, LP	BASIC ENERGY SERVICES, LP	TAX	363.93
PO BOX 841903	PO BOX 10460	INVOICE TOTAL	12,593.77
DALLAS, TX 75284-1903	MIDLAND, TX 79702		



energy services, L.P.

TREATMENT REPORT

Customer Carrie Exploration and Development, LLC.		Lease No.		Date 9-16-11	
Lease John Roth		Well # C" #2			
Field Order # 4823	Station Pratt, Kansas	Casing 5 1/2	Depth 15.5 lb./ft.	County Barton	State Kansas
Type Job C.N.W. - Longstring			Formation	Legal Description 34-195-11W	

PIPE DATA		PERFORATING DATA		FLUID USED		TREATMENT RESUME		
Casing Size 5 1/2	Tubing Size 5 lb./ft.	Shots/Ft 125	From 758	Acid AA2 with	Pre Pad 108 salt, 51	RATE 58 FLT-22	PRESS 258	ISIP Defoamer,
Depth 3398 feet	Depth	From 758	To Gas Block	Pre Pad 108 salt, 51	Max 67 st. Gilsomite			5 Min.
Volume 80.93 bbl	Volume	From	To 15.3 lb./gal.	Pre Pad 108 salt, 51	Min 1/ st. 1.36 CU.FT			10 Min.
Max Press 500 P.S.I.	Max Press	From	To	Pre Pad 108 salt, 51	Avg			15 Min.
Well Connection Plug Container	Annulus Vol. 30 sacks	From 30 sacks	To 60/40 Poz to Plug	Pre Pad 108 salt, 51	HBP Used Rat Hole			Annulus Pressure
Plug Depth 3300 feet	Packer Depth	From	To	Flush 80 Bbl. Fresh Water	Gas Volume			Total Load

Customer Representative: Ron Herald Station Manager: David Scott Treater: Clarence R. Messick

Service Units	37216	19903	19905	19860	19918			
Driver Names	Messick	Mattal	Phye					

Time	Casing Pressure	Tubing Pressure	Bbls. Pumped	Rate	Service Log
12:30					Cementer and Float Equipment on location.
1:15					Trucks on location and hold safety location.
4:50					Southwind Drilling start to run Regular Guide Shoe, Shoe Joint with Insert screwed into collar and a total of 81 Joints used - Tested 5 1/2" casing. A Burstet was installed on top of Joint #10. A Turbolizer was installed on collars #2, 3, 4, 6, 8, and #10. A Port Collar was installed on top of Joint #43 or 1,628 feet down.
7:25					Casing in well. Circulate and Rotate for
8:00	2400				Shut in well and Pressure Test. Open Well.
8:02	300			5	Start 28 tcl Pre Flush
			10	5	Start Flow-Seal 21 Solution
			17	5	Start 28 tcl Spacer.
8:08	300		22	5	Start mixing 125 sacks AA2 cement.
	-0-		52		Stop pumping. Shut in well. Wash pump and lines. Release Top Rubber Plug. Open Well.
8:18	100			6.5	Start Fresh Water Displacement.
			65	5	Start to lift cement.
8:30	600		80		Plug down
	1,400				Pressure up.
					Release pressure. Insert held
	-0-		7	3	Plug Rat Hole
					Wash up pump truck.
9:15					Job Complete.



PAGE	CUST NO	INVOICE DATE
1 of 1	1005952	09/22/2011
INVOICE NUMBER		
1718 - 90706010		

Pratt (620) 672-1201
 B CARRIE EXPLORATION & DEVELOPMENT LLC
 I 210 W 22ND ST
 L HAYS
 L KS US 67601
 T
 O ATTN: HEROLD

J LEASE NAME John Roth C-2
 O LOCATION
 B COUNTY Barton
 S STATE KS
 I JOB DESCRIPTION Cement-New Well Casing/Pi
 T JOB CONTACT
 E

JOB #	EQUIPMENT #	PURCHASE ORDER NO.	TERMS	DUE DATE
40372790	20920		Net - 30 days	10/22/2011

	QTY	U of M	UNIT PRICE	INVOICE AMOUNT
For Service Dates: 09/21/2011 to 09/21/2011				
0040372790				
171804453A Cement-New Well Casing/Pi 09/21/2011 5 1/2" Port Collar				
60/40 POZ	400.00	EA	12.00	3,600.00 T
Cement Gel	344.00	EA	0.25	64.50 T
Unit Mileage Charge-Pickups, Vans & Cars	55.00	HR	4.25	175.31
Heavy Equipment Mileage	110.00	MI	7.00	577.50
Proppant and Bulk Delivery Charges	946.00	MI	1.60	1,135.20
Depth Charge; 1001-2000'	1.00	HR	1,500.00	1,125.00
Blending & Mixing Service Charge	400.00	MI	1.40	420.00
Supervisor	1.00	HR	175.00	131.25

pd 10-10-11 #2758

PLEASE REMIT TO:	SEND OTHER CORRESPONDENCE TO:	SUB TOTAL	7,228.76
BASIC ENERGY SERVICES, LP	BASIC ENERGY SERVICES, LP	TAX	267.51
PO BOX 841903	PO BOX 10460	INVOICE TOTAL	7,496.27
DALLAS, TX 75284-1903	MIDLAND, TX 79702		

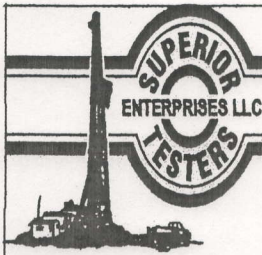
Customer <i>Carrie Explor.</i>		Lease No.		Date <i>9-21-11</i>	
Lease <i>John Roth</i>		Well # <i>C-2</i>			
Field Order # <i>04553A</i>	Station <i>Pratt</i>	Casing <i>5 1/2</i>	Depth <i>1628'</i>	County <i>Barton</i>	State <i>Ks</i>
Type Job <i>open Port Collar</i>	Formation <i>crn</i>	Legal Description <i>34-19-11</i>			

PIPE DATA		PERFORATING DATA		FLUID USED		TREATMENT RESUME		
Casing Size <i>5 1/2"</i>	Tubing Size <i>2 7/8"</i>	Shots/Ft <i>400sk</i>	Acid <i>66/40 Poz</i>	Pre Pad	3% Gel	RATE	PRESS	ISIP
Depth <i>1628'</i>	Depth <i>1628'</i>	From	To	Pad		Max		5 Min.
Volume	Volume <i>9.5</i>	From	To	Frac		Min		10 Min.
Max Press	Max Press <i>800</i>	From	To	Flush <i>Disp H2O</i>		Avg		15 Min.
Well Connection	Annulus Vol.	From	To			HHP Used		Annulus Pressure
Plug Depth	Packer Depth	From	To			Gas Volume		Total Load

Customer Representative <i>Ron Herald</i>	Station Manager <i>SCOH</i>	Treater <i>Allen</i>
--	--------------------------------	-------------------------

Service Units <i>78443</i>	<i>3370x</i>	<i>20920</i>	<i>19832</i>	<i>21010</i>					
Driver Names <i>Allen Joe</i>	<i>Melson Jeff</i>	<i>McCasky</i>							

Time	Casing Pressure	Tubing Pressure	Bbls. Pumped	Rate	Service Log
<i>1245</i>					<i>on hoc. Discuss safety Setup Plan Job</i>
<i>140</i>	<i>800⁺</i>	<i>800⁺</i>	<i>2</i>	<i>2 1/2</i>	<i>Test casing OK P.C. @ 1628'</i>
					<i>open Port collar Take Rate</i>
					<i>Blow on Braden Hand.</i>
				<i>3</i>	<i>start mix 400sk 66/40 Poz</i>
					<i>3% gel</i>
			<i>96</i>		<i>Finish mix</i>
<i>226</i>	<i>500⁺</i>	<i>500⁺</i>	<i>8 1/2</i>	<i>2 1/2</i>	<i>Disp. 8 1/2 Bbls H2O</i>
<i>230</i>	<i>800⁺</i>	<i>800⁺</i>			<i>close Port collar + PST Test OK</i>
<i>245</i>	<i>300⁺</i>	<i>300⁺</i>	<i>20</i>	<i>3</i>	<i>Run 4 Jts. + CIR Clean Pump 20 Bbl</i>
					<i>Wash up Pump Truck</i>
					<i>Rack up Equip.</i>
<i>400</i>					<i>Job complete</i>
					<i>thanks Allen Joe Jeff</i>
					<i>cm¹ CIR TO P.T</i>



DRILL STEM TEST REPORT

Carrie Exploration & Development

John Roth #C-2

210 West 2nd Street
Hays, Kansas 67601

34-19s-11w

Job Ticket: 17212

DST#: 1

ATTN: Herb Deines

Test Start: 2011.09.13 @ 08:15:00

GENERAL INFORMATION:

Formation: **Kansas City "A & B"**

Deviated: No Whipstock: ft (KB)

Time Tool Opened: 09:49:30

Time Test Ended: 14:10:30

Test Type: Conventional Bottom Hole (Initial)

Tester: Gene Budig

Unit No: 3335-29

Interval: **3046.00 ft (KB) To 3085.00 ft (KB) (TVD)**

Reference Elevations: 1780.00 ft (KB)

Total Depth: 3085.00 ft (KB) (TVD)

1772.00 ft (CF)

Hole Diameter: 7.88 inches Hole Condition: Fair

KB to GR/CF: 8.00 ft

Serial #: 6806

Inside

Press@RunDepth: 53.88 psia @ 3081.00 ft (KB)

Capacity: 5000.00 psia

Start Date: 2011.09.13

End Date:

2011.09.13

Last Calib.:

2011.09.13

Start Time: 08:15:00

End Time:

14:10:30

Time On Btrn:

2011.09.13 @ 09:48:30

Time Off Btrn:

2011.09.13 @ 12:37:00

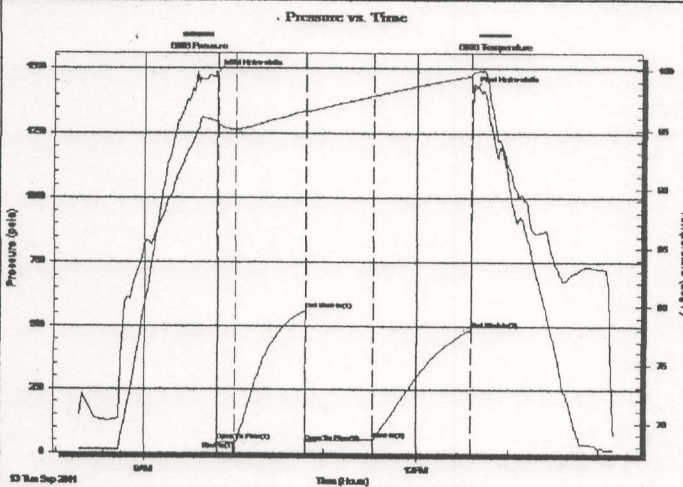
TEST COMMENT:

1st Opening 15 Minutes-Fair blow build to the bottom of a 5 gallon bucket in 10 minutes

1st Shut-in 45 Minutes-No blow back

2nd Opening 45 Minutes-Good blow built to the bottom of a 5 gallon bucket in 1 minute and decreased to a fair blow

2ns Shut-in 60 Minutes-No blow back



PRESSURE SUMMARY

Time (Min.)	Pressure (psia)	Temp (deg F)	Annotation
0	1481.03	95.65	Initial Hydro-static
1	47.56	95.37	Open To Flow (1)
13	43.49	95.03	Shut-in(1)
59	561.55	96.64	End Shut-in(1)
60	43.87	96.54	Open To Flow (2)
104	53.88	97.86	Shut-in(2)
168	487.87	99.50	End Shut-in(2)
169	1416.00	99.80	Final Hydro-static

Recovery

Length (ft)	Description	Volume (bbl)
0.00	400 feet of gas in the pipe	0.00
40.00	slightly oil cut mud	0.56
0.00	11%Gas 1% Oil 78% Mud 10% Water	0.00
0.00	Chlorides 10000	0.00

Gas Rates

	Choke (inches)	Pressure (psia)	Gas Rate (Mcf/d)

Serial #: 6806

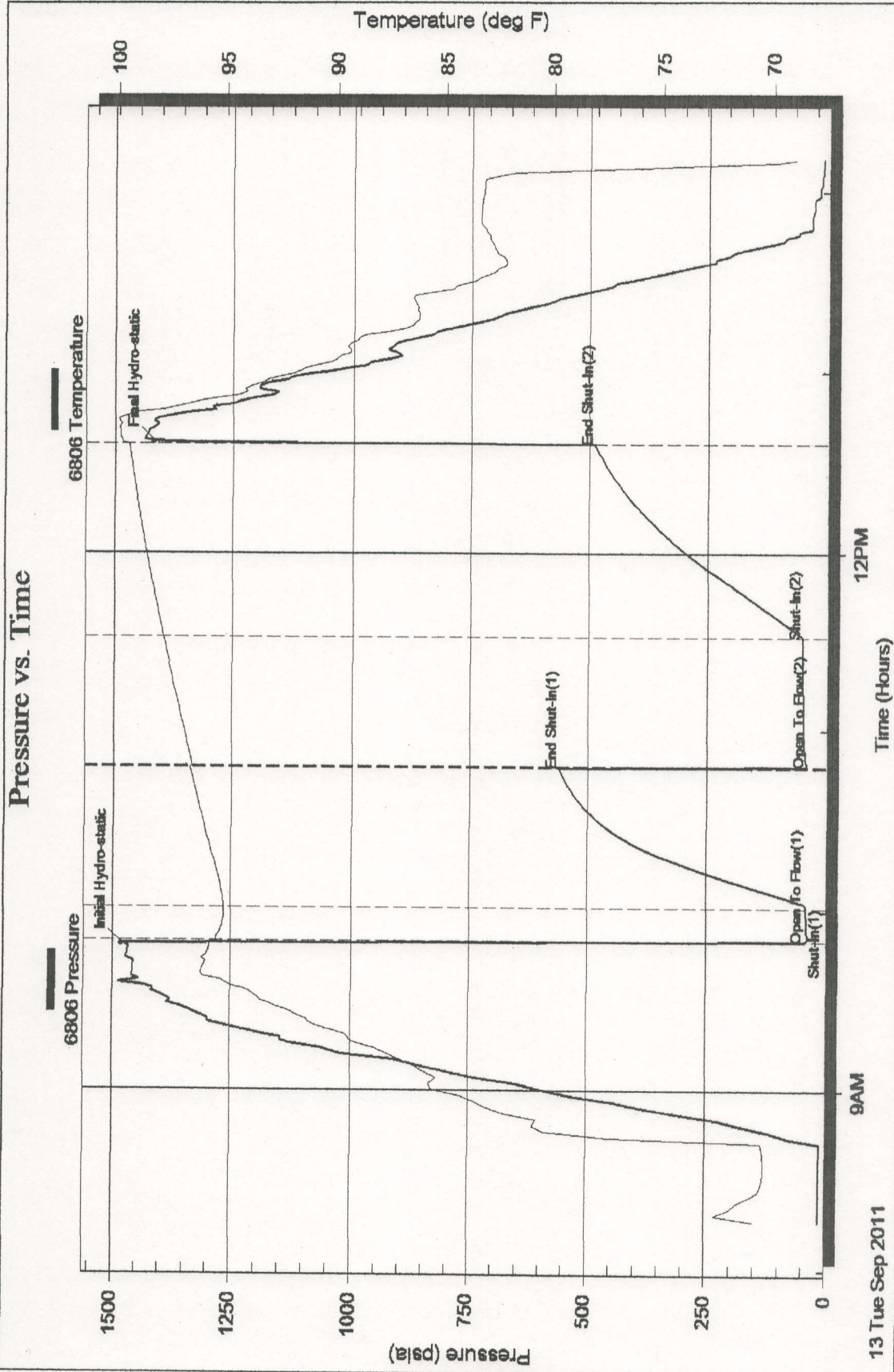
Inside

Carrie Exploration & Development

34-19s-11w

DST Test Number: 1

Pressure vs. Time



Ref. No: 17212

Superior Testers Enterprises LLC

Printed: 2011.09.13 @ 14:35:10



DRILL STEM TEST REPORT

Carrie Exploration & Development

John Roth #C-2

210 West 2nd Street
Hays, Kansas 67601

34-19s-11w

Job Ticket: 17213

DST#: 2

ATTN: Herb Deines

Test Start: 2011.09.14 @ 10:00:00

GENERAL INFORMATION:

Formation: **Arbuckle**

Deviated: No Whipstock: ft (KB)

Time Tool Opened: 00:00:00

Time Test Ended: 00:00:00

Test Type: Conventional Bottom Hole (Initial)

Tester: Gene Budig

Unit No: 3335-29

Interval: **3292.00 ft (KB) To 3322.00 ft (KB) (TVD)**

Total Depth: 3322.00 ft (KB) (TVD)

Hole Diameter: 7.88 inches Hole Condition: Fair

Reference Elevations: 1780.00 ft (KB)

1772.00 ft (CF)

KB to GR/CF: 8.00 ft

Serial #: **6806**

Inside

Press@RunDepth: 53.30 psia @ 3318.00 ft (KB)

Capacity: 5000.00 psia

Start Date: 2011.09.14

End Date:

2011.09.14

Last Calib.:

2011.09.14

Start Time: 10:15:00

End Time:

15:37:00

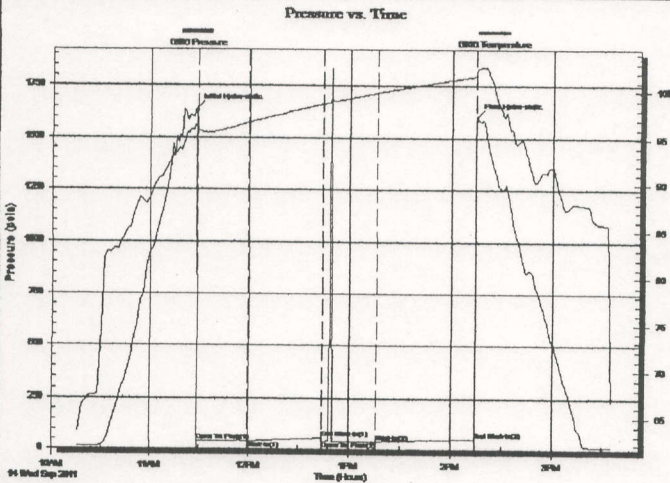
Time On Btm:

2011.09.14 @ 11:28:30

Time Off Btm:

2011.09.14 @ 14:15:00

TEST COMMENT: 1st Opening 30 Minutes-Very weak surface blow for 10 minutes and died
 1st Shut-In 45 Minutes-No blow back
 2nd Opening 30 Minutes-No blow flushed tool after 5 minutes good surge no help
 2nd Shut-In 60 Minutes-No blow back



PRESSURE SUMMARY

Time (Min.)	Pressure (psia)	Temp (deg F)	Annotation
0	1639.01	96.52	Initial Hydro-static
1	38.02	96.04	Open To Flow (1)
31	38.31	96.71	Shut-In(1)
76	57.19	98.70	End Shut-In(1)
76	39.07	98.72	Open To Flow (2)
108	40.89	99.89	Shut-In(2)
166	53.30	101.65	End Shut-In(2)
167	1602.60	102.33	Final Hydro-static

Recovery

Length (ft)	Description	Volume (bbl)
10.00	Slightly oil spotted mud with a good	0.14
0.00	of oil between the tools	0.00

Gas Rates

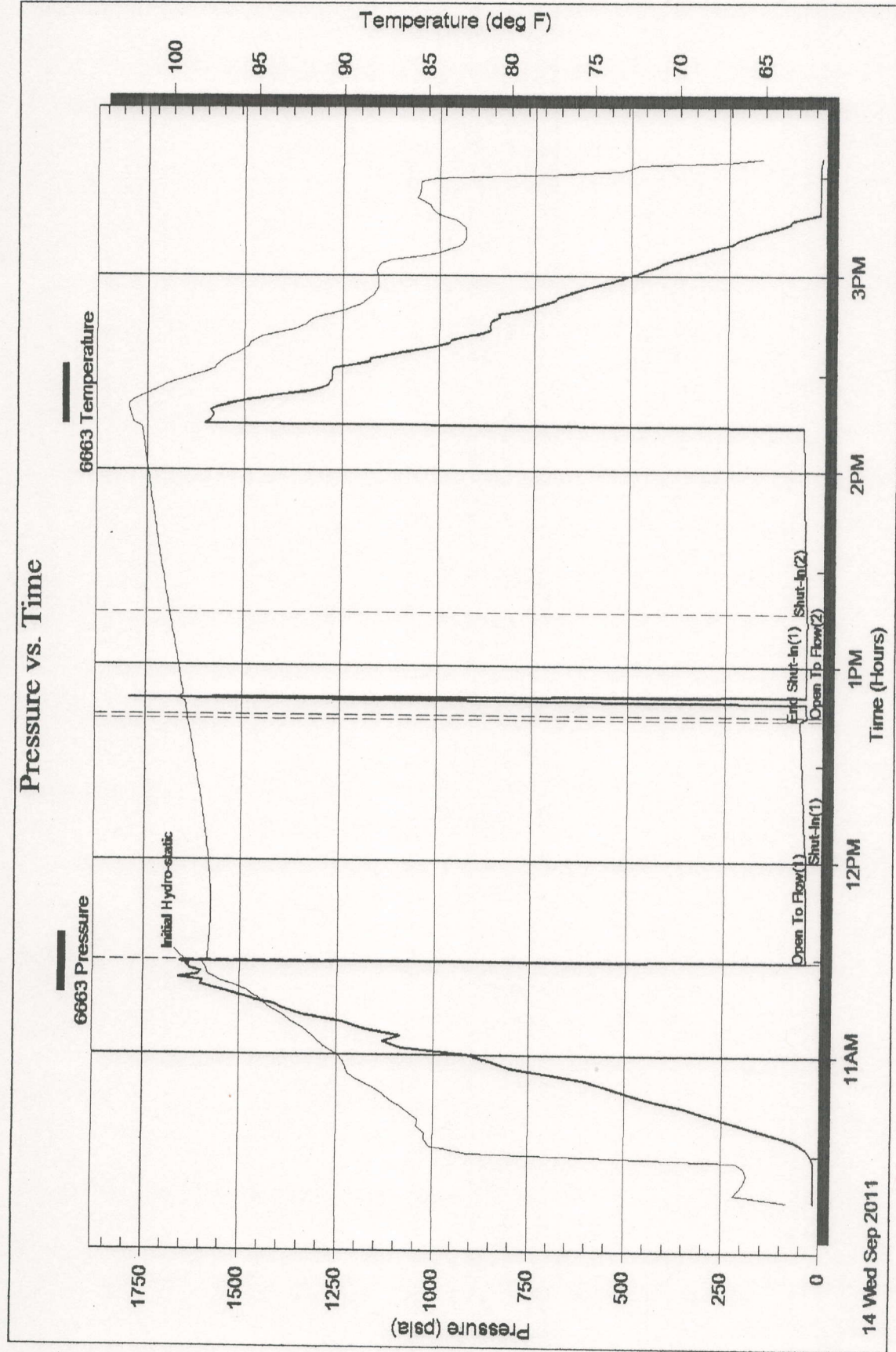
	Choke (inches)	Pressure (psia)	Gas Rate (Mcf/d)

Serial #: 6663

Outside Carrie Exploration & Development

34-19s-11w

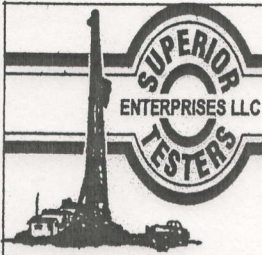
DST Test Number: 2



Ref. No: 17213

Superior Testers Enterprises LLC

Printed: 2011.09.14 @ 15:29:34



DRILL STEM TEST REPORT

Carrie Exploration & Development

John Roth #C-2

210 West 2nd Street
Hays, Kansas 67601

34-19s-11w

Job Ticket: 17214

DST#: 3

ATTN: Herb Deines

Test Start: 2011.09.14 @ 08:30:00

GENERAL INFORMATION:

Formation: **Arbuckle**

Deviated: No Whipstock: ft (KB)

Time Tool Opened: 00:00:00

Time Test Ended: 00:00:00

Test Type: Conventional Bottom Hole (Initial)

Tester: Gene Budig

Unit No: 3335-30

Interval: **3320.00 ft (KB) To 3330.00 ft (KB) (TVD)**

Reference Elevations: 1780.00 ft (KB)

Total Depth: 3330.00 ft (KB) (TVD)

1772.00 ft (CF)

Hole Diameter: 7.88 inches Hole Condition: Fair

KB to GR/CF: 8.00 ft

Serial #: 6663

Outside

Press@RunDepth: 185.26 psia @ 3327.00 ft (KB)

Capacity: 5000.00 psia

Start Date: 2011.09.15

End Date:

2011.09.15

Last Calib.:

2011.09.15

Start Time: 08:30:00

End Time:

13:17:00

Time On Btm:

2011.09.15 @ 09:48:00

Time Off Btm:

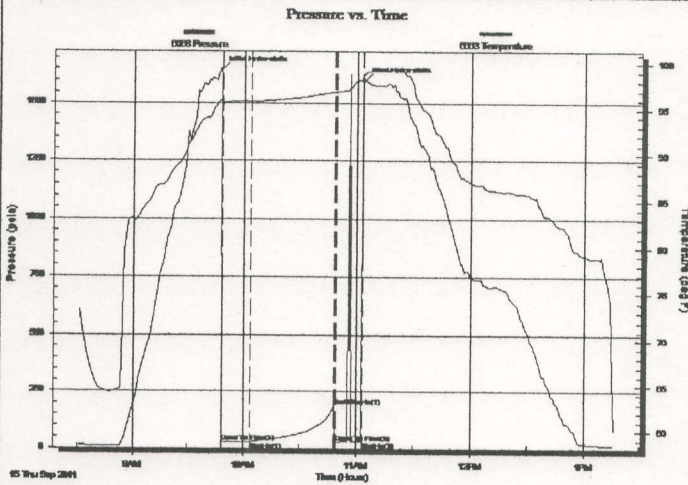
2011.09.15 @ 11:04:00

TEST COMMENT: 1st Opening 15 Minutes-Very weak surface blow for 10 minutes and died

1st Shut-In 45 Minutes-No blow back

2nd Opening 15 Minutes-No blow flushed tool after 5 minutes good surge no blow pulled tool after 10 minutes

2nd Shut-In NONE TAKEN



PRESSURE SUMMARY

Time (Min.)	Pressure (psia)	Temp (deg F)	Annotation
0	1648.03	95.96	Initial Hydro-static
1	26.48	95.44	Open To Flow (1)
16	28.52	95.85	Shut-In(1)
61	185.26	96.94	End Shut-In(1)
62	28.26	96.92	Open To Flow (2)
75	31.50	98.23	Shut-In(2)
76	1603.30	98.80	Final Hydro-static

Recovery

Length (ft)	Description	Volume (bbl)
10.00	very slightly oil spotted mud	0.14
0.00	there was a good show of oil	0.00
0.00	between the tools	0.00

Gas Rates

Choke (inches)	Pressure (psia)	Gas Rate (Mcf/d)

Serial #: 6663

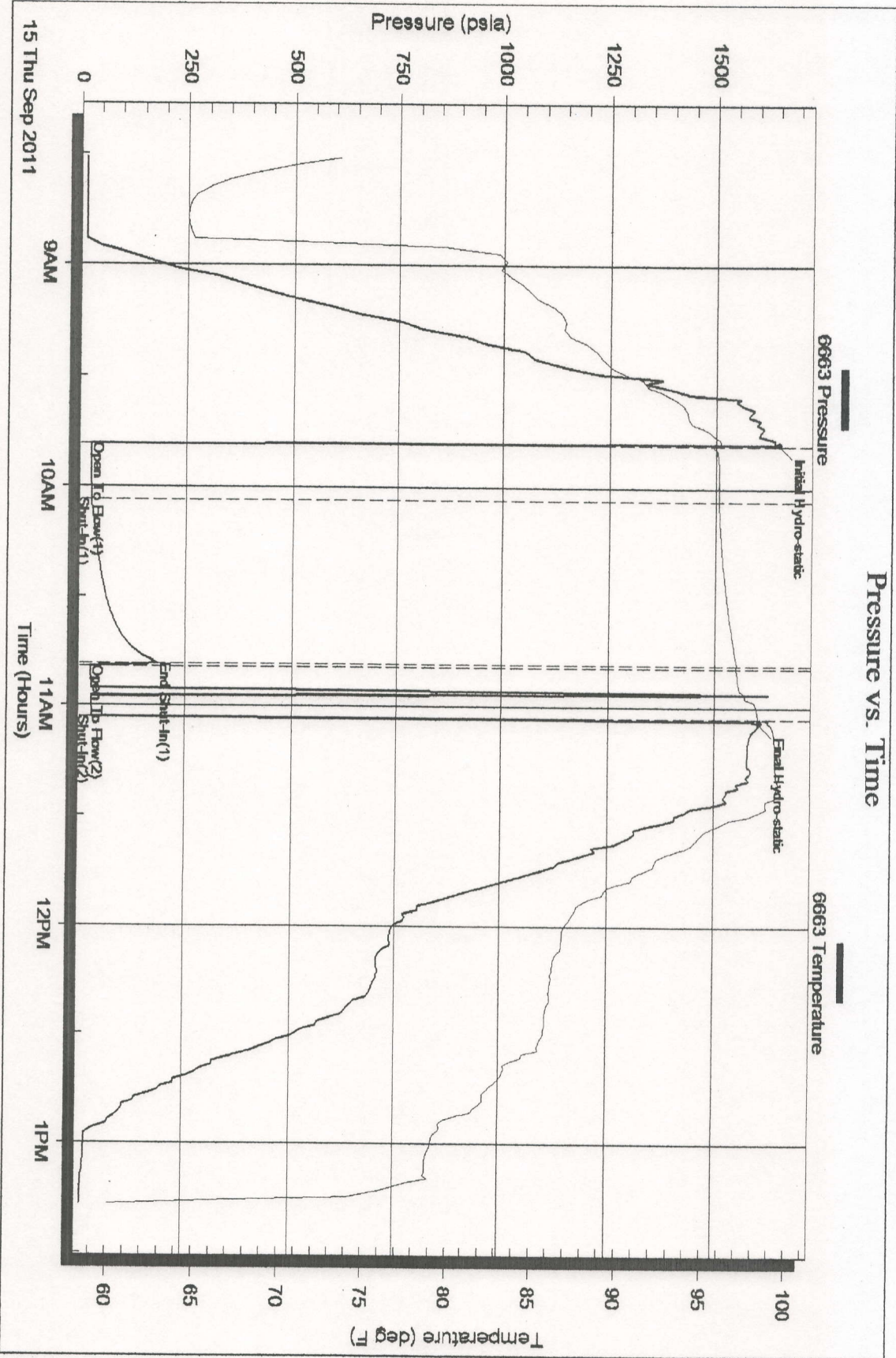
Outside Carrie Exploration & Development

34-19s-11w

DST Test Number: 3

12

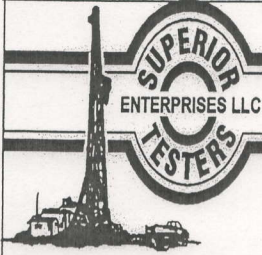
Pressure vs. Time



Superior Testers Enterprises LLC

Ref. No: 17214

Printed: 2011.09.15 @ 01:21:32



DRILL STEM TEST REPORT

Carrie Exploration & Development

John Roth #C-2

210 West 2nd Street
Hays, Kansas 67601

34-19s-11w

Job Ticket: 17215

DST#: 4

ATTN: Herb Deines

Test Start: 2011.09.15 @ 05:00:00

GENERAL INFORMATION:

Formation: **Kansas City "F"**
 Deviated: No Whipstock: ft (KB)
 Time Tool Opened: 06:59:00
 Time Test Ended: 10:12:00

Test Type: Conventional Bottom Hole (Initial)
 Tester: Gene Budig
 Unit No: 3335-30

Interval: **3098.00 ft (KB) To 3126.00 ft (KB) (TVD)**
 Total Depth: 3399.00 ft (KB) (TVD)
 Hole Diameter: 7.88 inches Hole Condition: Fair

Reference Elevations: 1780.00 ft (KB)
 1772.00 ft (CF)
 KB to GR/CF: 8.00 ft

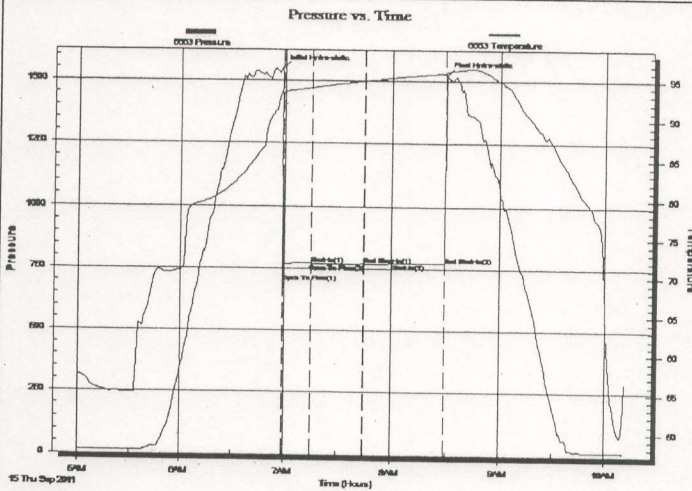
Serial #: 6663

Outside

Press@RunDepth: 770.34 psia @ 3127.00 ft (KB)
 Start Date: 2011.09.15 End Date: 2011.09.15
 Start Time: 05:00:00 End Time: 10:12:00

Capacity: 5000.00 psia
 Last Calib.: 2011.09.15
 Time On Btm: 2011.09.15 @ 06:58:30
 Time Off Btm: 2011.09.15 @ 08:29:30

TEST COMMENT: 1st Opening 15 Minutes Weak blow for 10 minutes and died
 1st Shut-In 30 Minutes-No blow back
 2nd Opening 15 Minutes-No blow
 2nd Shut-In 30 Minutes- No blow back



PRESSURE SUMMARY

Time (Min.)	Pressure (psia)	Temp (deg F)	Annotation
0	1546.50	93.65	Initial Hydro-static
1	690.51	93.17	Open To Flow (1)
17	770.57	94.00	Shut-In(1)
46	770.50	94.95	End Shut-In(1)
47	769.03	94.96	Open To Flow (2)
62	770.34	95.36	Shut-In(2)
91	770.37	96.02	End Shut-In(2)
91	1523.85	96.18	Final Hydro-static

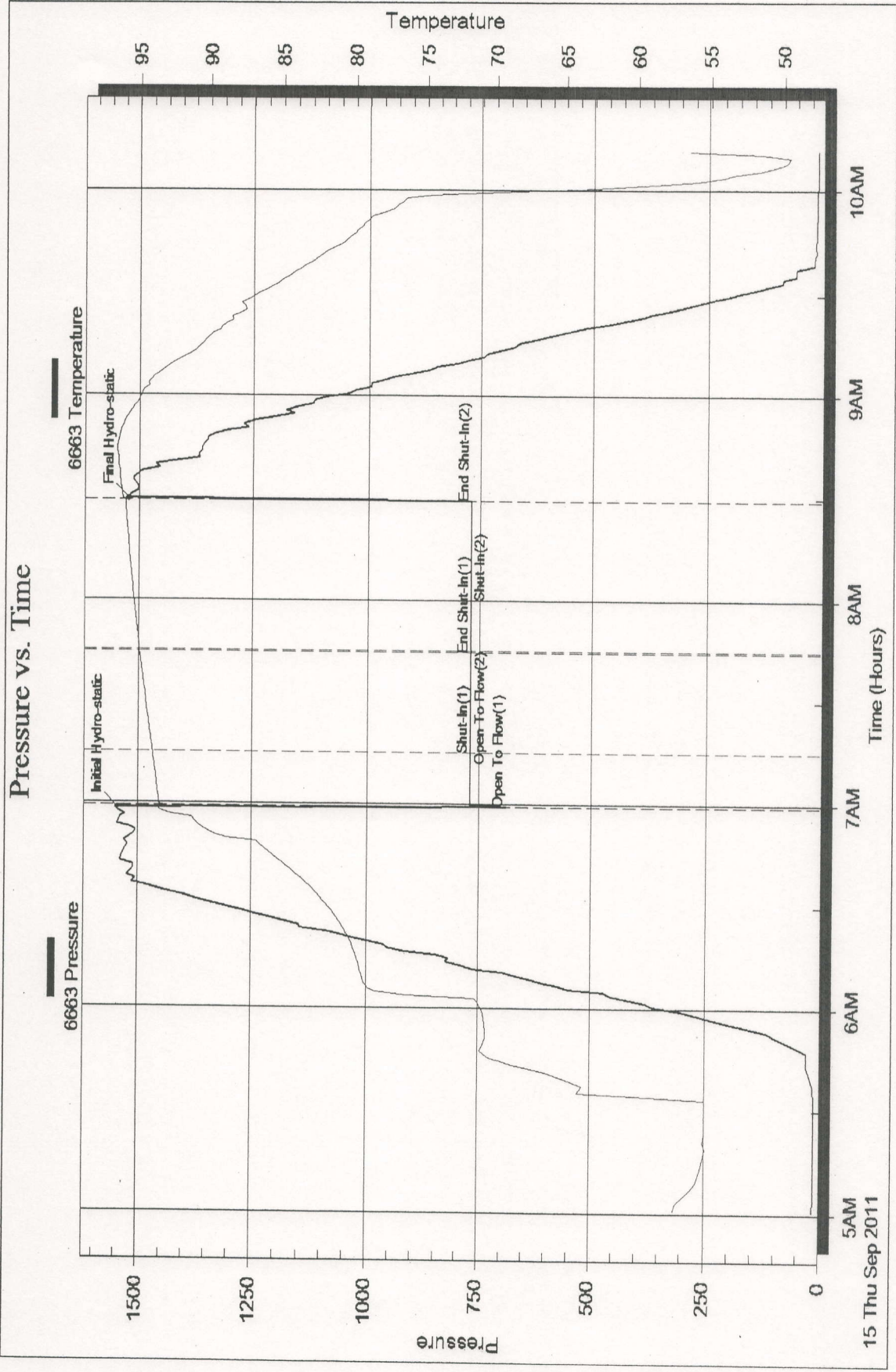
Recovery

Length (ft)	Description	Volume (bbl)
110.00	drilling mud	1.54

Gas Rates

Choke (inches)	Pressure (psia)	Gas Rate (Mcf/d)

Pressure vs. Time



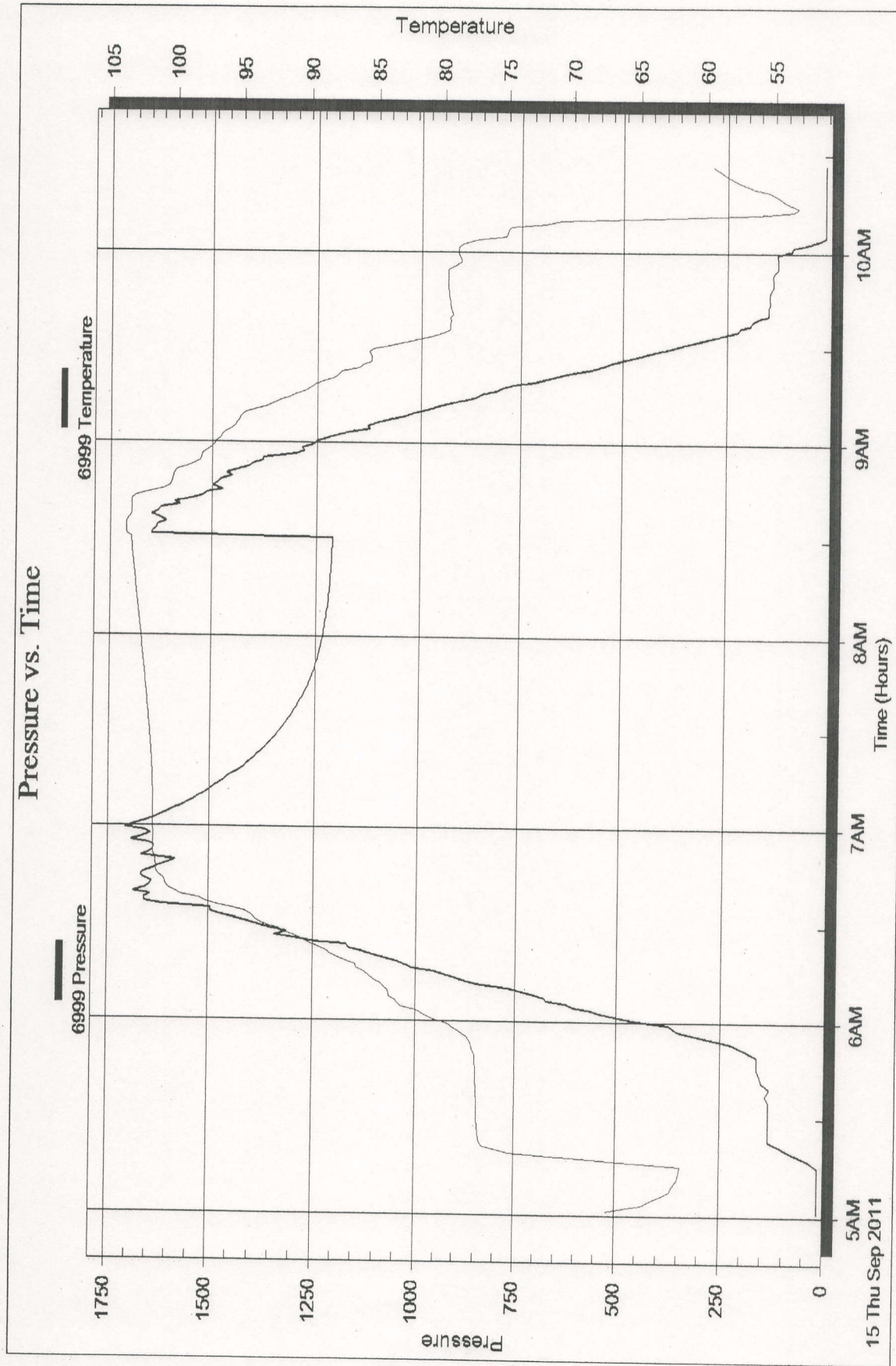
Serial #: 6999

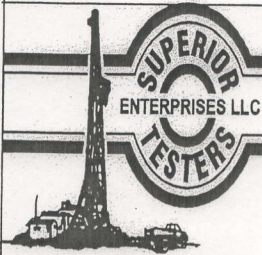
Inside

Carrie Exploration & Development

34-19s-11w

DST Test Number: 4





DRILL STEM TEST REPORT

Carrie Exploration & Development

John Roth #C-2

210 West 2nd Street
Hays, Kansas 67601

34-19s-11w

Job Ticket: 17216

DST#: 5

ATTN: Herb Deines

Test Start: 2011.09.16 @ 10:45:00

GENERAL INFORMATION:

Formation: **Kansas City "F"**
 Deviated: No Whipstock: ft (KB)
 Time Tool Opened: 00:00:00
 Time Test Ended: 00:00:00

Test Type: Conventional Bottom Hole (Initial)
 Tester: Gene Budig
 Unit No: 3335-30

Interval: **3090.00 ft (KB) To 3126.00 ft (KB) (TVD)**
 Total Depth: 3399.00 ft (KB) (TVD)
 Hole Diameter: 7.88 inches Hole Condition: Fair

Reference Elevations: 1780.00 ft (KB)
 1772.00 ft (CF)
 KB to GR/CF: 8.00 ft

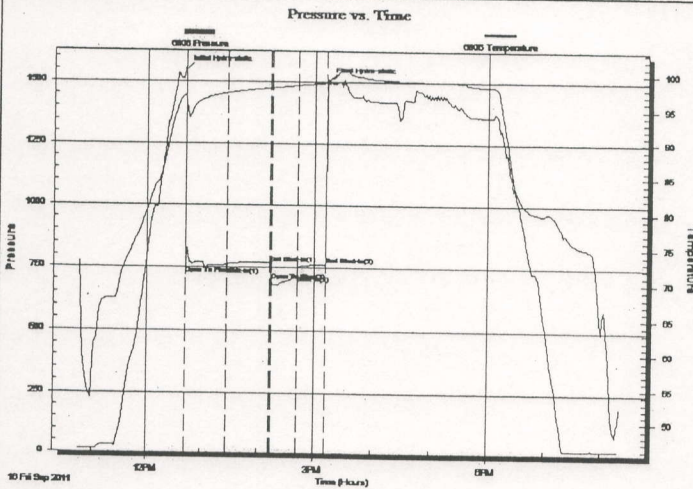
Serial #: 6806

Inside

Press@RunDepth: 761.70 psia @ 3119.00 ft (KB)
 Start Date: 2011.09.16 End Date: 2011.09.16
 Start Time: 10:45:00 End Time: 20:21:00

Capacity: 5000.00 psia
 Last Calib.: 2011.09.16
 Time On Btm: 2011.09.16 @ 12:42:00
 Time Off Btm: 2011.09.16 @ 15:14:00

TEST COMMENT: 1st Opening 45 Minutes-Strong blow w ith gas to surface in 24 minutes
 1st Shut-In 45 Minutes-Fair blow back
 2nd Opening 30 Minutes-Strong blow see gas report
 2nd Shut-In 30 Minutes-Fair blow back



PRESSURE SUMMARY

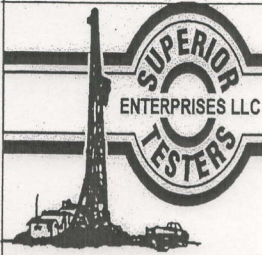
Time (Min.)	Pressure (psia)	Temp (deg F)	Annotation
0	1548.89	96.94	Initial Hydro-static
1	720.52	96.77	Open To Flow (1)
46	749.09	97.22	Shut-In(1)
91	767.64	97.98	End Shut-In(1)
93	696.38	97.98	Open To Flow (2)
120	718.24	98.35	Shut-In(2)
151	761.70	98.72	End Shut-In(2)
152	1506.17	98.94	Final Hydro-static

Recovery

Length (ft)	Description	Volume (bbl)
2925.00	Clean Gassy Oil Gravity 41 Corrected	41.03
0.00	20% Gas 80% Oil	0.00

Gas Rates

	Choke (inches)	Pressure (psia)	Gas Rate (Mcf/d)
First Gas Rate	0.50	4.15	28.00
Last Gas Rate	0.75	5.90	92.16
Max. Gas Rate	0.75	5.90	92.16



DRILL STEM TEST REPORT

GAS RATES

Carrie Exploration & Development

John Roth #C-2

210 West 2nd Street
Hays ,Kansas 67601

34-19s-11w

Job Ticket: 17216

DST#: 5

ATTN: Herb Deines

Test Start: 2011.09.16 @ 10:45:00

Gas Rates Information

Temperature: 59 (deg F)
Relative Density: 0.65
Z Factor: 0.8

Gas Rates Table

Flow Period	Elapsed Time	Choke (inches)	Pressure (psia)	Gas Rate (Mcf/d)
1	35	0.50	4.15	28.00
1	40	0.50	5.35	36.09
1	45	0.50	5.35	36.09
2	10	0.75	4.75	74.19
2	20	0.75	5.00	78.10
2	30	0.75	5.90	92.16

Pressure vs. Time

