



TRILOBITE TESTING, INC.

DRILL STEM TEST REPORT

AbercrombieEnergy, LLC

14-19s-26w Ness Co

10209 W. Central
STE 2
Wichita Ks 67212
ATTN: Gary Gensch

Whipple #4-14

Job Ticket: 46556

DST#: 2

Test Start: 2012.05.02 @ 01:45:05

GENERAL INFORMATION:

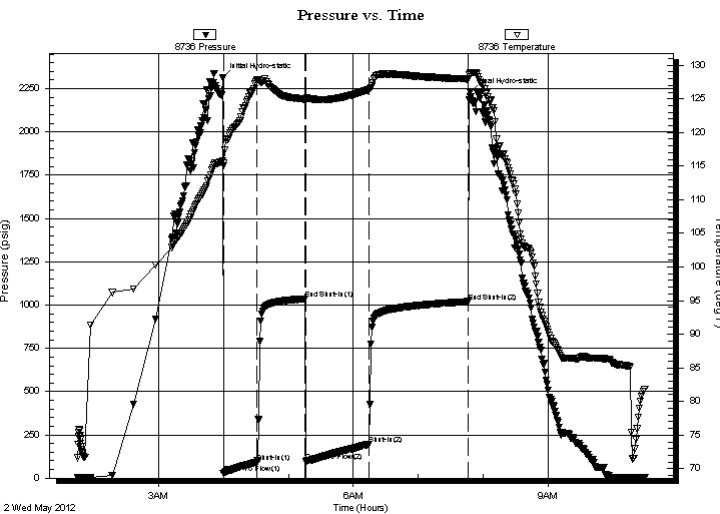
Formation: **Mississippian**
 Deviated: No Whipstock: ft (KB)
 Time Tool Opened: 03:59:45
 Time Test Ended: 10:30:00
 Interval: **4566.00 ft (KB) To 4608.00 ft (KB) (TVD)**
 Total Depth: 4608.00 ft (KB) (TVD)
 Hole Diameter: 7.88 inches Hole Condition: Fair
 Test Type: Conventional Bottom Hole (Reset)
 Tester: Mike Roberts
 Unit No: 48
 Reference Elevations: 2631.00 ft (KB)
 2622.00 ft (CF)
 KB to GR/CF: 9.00 ft

Serial #: 8736

Inside

Press @ Run Depth: 196.98 psig @ 4569.00 ft (KB) Capacity: 8000.00 psig
 Start Date: 2012.05.02 End Date: 2012.05.02 Last Calib.: 2012.05.03
 Start Time: 01:45:05 End Time: 10:30:00 Time On Btm: 2012.05.02 @ 03:59:30
 Time Off Btm: 2012.05.02 @ 07:47:44

TEST COMMENT: IF:BOB in 9 min.
 IS:Return blow built to 1/2" in 20 min and died to weak surface blow
 FF:BOB in 10 min
 FS:Return blow built to weak surface blow and died in 15 min.



PRESSURE SUMMARY

Time (Min.)	Pressure (psig)	Temp (deg F)	Annotation
0	2311.51	115.87	Initial Hydro-static
1	26.77	115.02	Open To Flow (1)
32	92.61	127.82	Shut-In(1)
76	1036.25	124.94	End Shut-In(1)
77	97.61	124.77	Open To Flow (2)
135	196.98	126.36	Shut-In(2)
227	1020.08	127.94	End Shut-In(2)
229	2229.94	128.79	Final Hydro-static

Recovery

Length (ft)	Description	Volume (bbl)
0.00	GIP=0	0.00
119.00	Free Oil 100%o	1.67
62.00	gco 40 % g 60%o	0.87
186.00	gco 46%g 54%o	2.61
124.00	ocgm 5%o 15%g 80%m	1.74

* Recovery from multiple tests

Gas Rates

Choke (inches)	Pressure (psig)	Gas Rate (Mcf/d)



**TRILOBITE
TESTING, INC.**

DRILL STEM TEST REPORT

FLUID SUMMARY

AbercrombieEnergy, LLC

14-19s-26w Ness Co

10209 W. Central
STE 2
Wichita Ks 67212
ATTN: Gary Gensch

Whipple #4-14

Job Ticket: 46556

DST#: 2

Test Start: 2012.05.02 @ 01:45:05

Mud and Cushion Information

Mud Type: Gel Chem

Mud Weight: 9.00 lb/gal

Viscosity: 42.00 sec/qt

Water Loss: 7.98 in³

Resistivity: 0.00 ohm.m

Salinity: 2200.00 ppm

Filter Cake: 1.00 inches

Cushion Type:

Cushion Length: ft

Cushion Volume: bbl

Gas Cushion Type:

Gas Cushion Pressure: psig

Oil API:

37 deg API

Water Salinity: 0 ppm

Recovery Information

Recovery Table

Length ft	Description	Volume bbl
0.00	GIP=0	0.000
119.00	Free Oil 100%o	1.669
62.00	gco 40 % g 60%o	0.870
186.00	gco 46%g 54%o	2.609
124.00	ocgm 5%o 15%g 80%m	1.739

Total Length: 491.00 ft Total Volume: 6.887 bbl

Num Fluid Samples: 0

Num Gas Bombs: 0

Serial #:

Laboratory Name:

Laboratory Location:

Recovery Comments: API 38@70 corrected to 37@60

Serial #: 8736

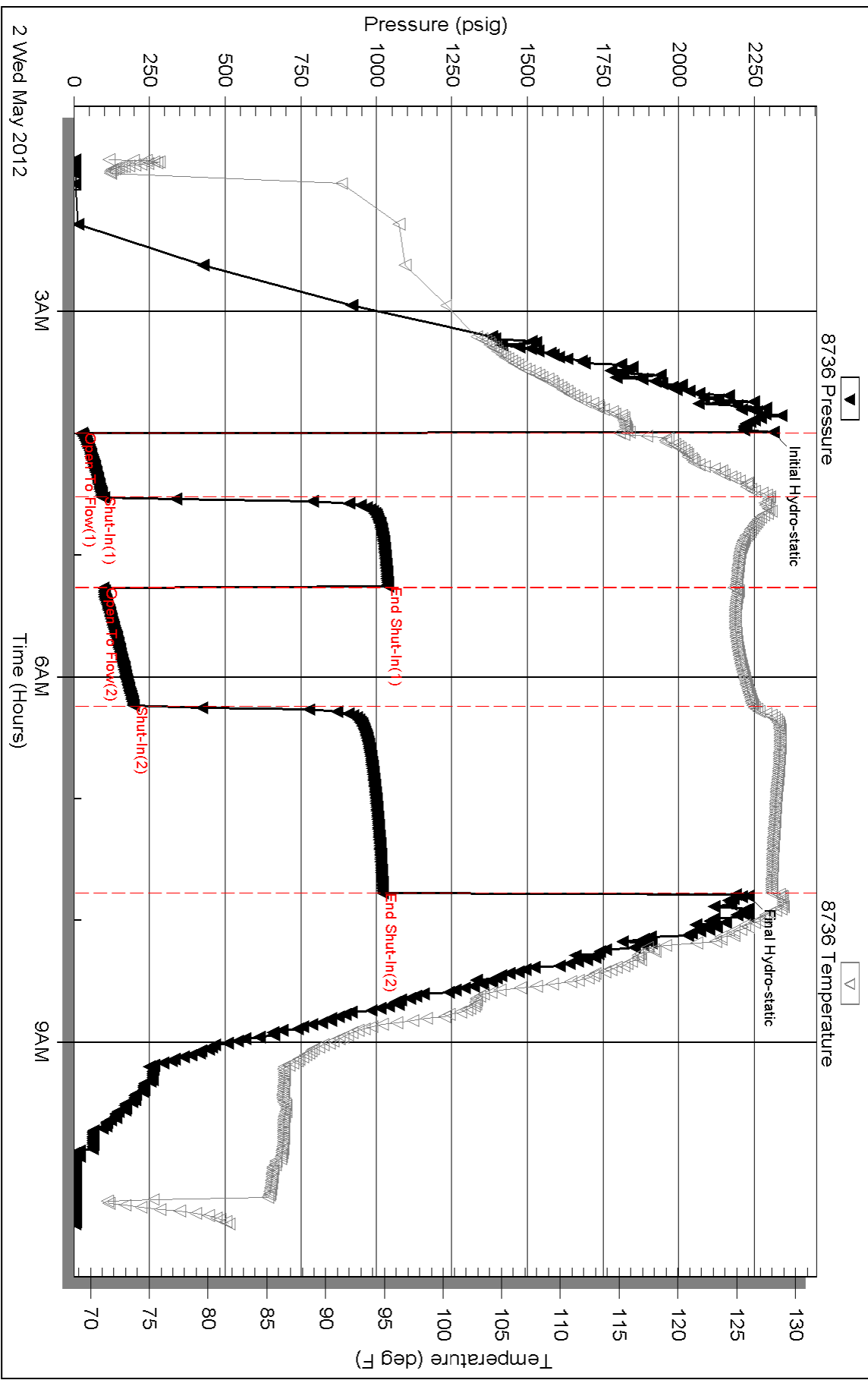
Inside

AbercrombieEnergy, LLC

Whipple #4-14

DST Test Number: 2

Pressure vs. Time



Triobite Testing, Inc

Ref. No: 46556

Printed: 2012.05.03 @ 11:00:01