



DRILL STEM TEST REPORT

Carrie Exploration & Development

John Roth #C-2

210 West 2nd Street
Hays, Kansas 67601

34-19s-11w

Job Ticket: 17213

DST#: 2

ATTN: Herb Deines

Test Start: 2011.09.14 @ 10:00:00

GENERAL INFORMATION:

Formation: **Arbuckle**

Deviated: No Whipstock: ft (KB)

Time Tool Opened: 00:00:00

Time Test Ended: 00:00:00

Test Type: Conventional Bottom Hole (Initial)

Tester: Gene Budig

Unit No: 3335-29

Interval: **3292.00 ft (KB) To 3322.00 ft (KB) (TVD)**

Total Depth: 3322.00 ft (KB) (TVD)

Hole Diameter: 7.88 inches Hole Condition: Fair

Reference Elevations: 1780.00 ft (KB)

1772.00 ft (CF)

KB to GR/CF: 8.00 ft

Serial #: **6806**

Inside

Press@RunDepth: 53.30 psia @ 3318.00 ft (KB)

Start Date: 2011.09.14

End Date: 2011.09.14

Start Time: 10:15:00

End Time: 15:37:00

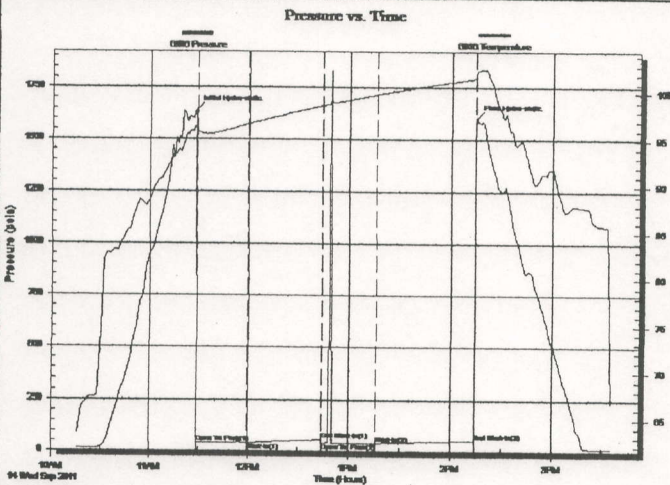
Capacity: 5000.00 psia

Last Calib.: 2011.09.14

Time On Btm: 2011.09.14 @ 11:28:30

Time Off Btm: 2011.09.14 @ 14:15:00

TEST COMMENT: 1st Opening 30 Minutes-Very weak surface blow for 10 minutes and died
 1st Shut-In 45 Minutes-No blow back
 2nd Opening 30 Minutes-No blow flushed tool after 5 minutes good surge no help
 2nd Shut-In 60 Minutes-No blow back



PRESSURE SUMMARY

Time (Min.)	Pressure (psia)	Temp (deg F)	Annotation
0	1639.01	96.52	Initial Hydro-static
1	38.02	96.04	Open To Flow (1)
31	38.31	96.71	Shut-In(1)
76	57.19	98.70	End Shut-In(1)
76	39.07	98.72	Open To Flow (2)
108	40.89	99.89	Shut-In(2)
166	53.30	101.65	End Shut-In(2)
167	1602.60	102.33	Final Hydro-static

Recovery

Length (ft)	Description	Volume (bbl)
10.00	Slightly oil spotted mud with a good	0.14
0.00	of oil between the tools	0.00

Gas Rates

	Choke (Inches)	Pressure (psia)	Gas Rate (Mcf/d)