



# DRILL STEM TEST REPORT

Carrie Exploration Development

34/ 19S/ 11W Barton Co

210 West 22nd Street  
Hays, Kans  
67601as  
ATTN: Herb Deines

Thomas Farms #C-2

Job Ticket: 18829      DST#: 3  
Test Start: 2012.01.31 @ 01:00:00

## GENERAL INFORMATION:

Formation: **Lansing " G " Zone**

Deviated: **No Whipstock:**      ft (KB)

Time Tool Opened: 02:42:00

Time Test Ended: 07:06:00

Test Type: Conventional Bottom Hole (Initial)

Tester: Dylan E Ellis

Unit No: 3345/Great Bend/33

Interval: **3120.00 ft (KB) To 3130.00 ft (KB) (TVD)**

Total Depth: 3130.00 ft (KB) (TVD)

Hole Diameter: 7.88 inches Hole Condition: Fair

Reference Elevations: 1779.00 ft (KB)

1771.00 ft (CF)

KB to GR/CF: 8.00 ft

**Serial #: 6731**

Inside

Press@RunDepth: 586.27 psia @ 3127.00 ft (KB)

Capacity: 5000.00 psia

Start Date: 2012.01.31

End Date:

2012.01.31

Last Calib.: 2012.01.31

Start Time: 01:01:00

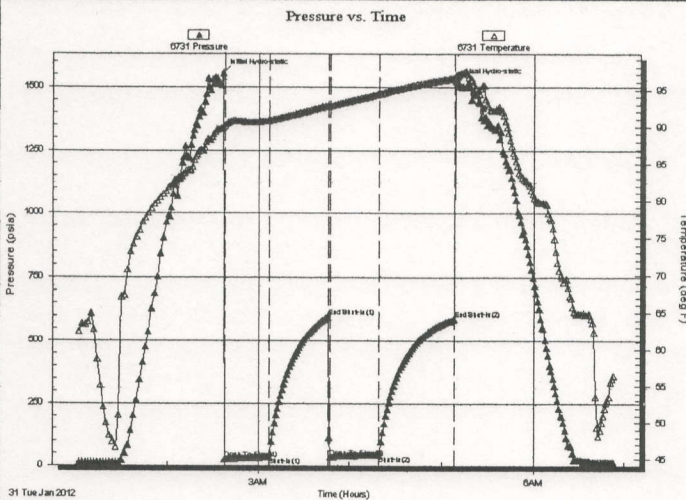
End Time:

06:52:30

Time On Btm: 2012.01.31 @ 02:36:30

Time Off Btm: 2012.01.31 @ 05:10:00

**TEST COMMENT:** 1ST Opening 30 Minutes steady building blow /blow blew to bottom of bucket in 2 minutes  
1ST Shut-In 45 Minutes no blow back  
2ND Opening 30 Minutes very strong blow /blow blew to bottom of bucket instantly  
2ND Shut-In 45 Minutes no blow back



## PRESSURE SUMMARY

Time (Min.)	Pressure (psia)	Temp (deg F)	Annotation
0	1553.75	89.89	Initial Hydro-static
1	26.44	90.13	Open To Flow (1)
31	33.94	90.82	Shut-In(1)
70	595.97	92.87	End Shut-In(1)
71	32.74	92.83	Open To Flow (2)
103	43.03	94.41	Shut-In(2)
152	586.27	96.55	End Shut-In(2)
154	1519.44	96.96	Final Hydro-static

## Recovery

Length (ft)	Description	Volume (bbl)
60.00	Gassy Oily Watery Mud	0.84
0.00	20% Gas 40% Oil 10% Mud 30% water	0.00
0.00	1674' Gas in the pipe	0.00

## Gas Rates

	Choke (inches)	Pressure (psia)	Gas Rate (Mcf/d)