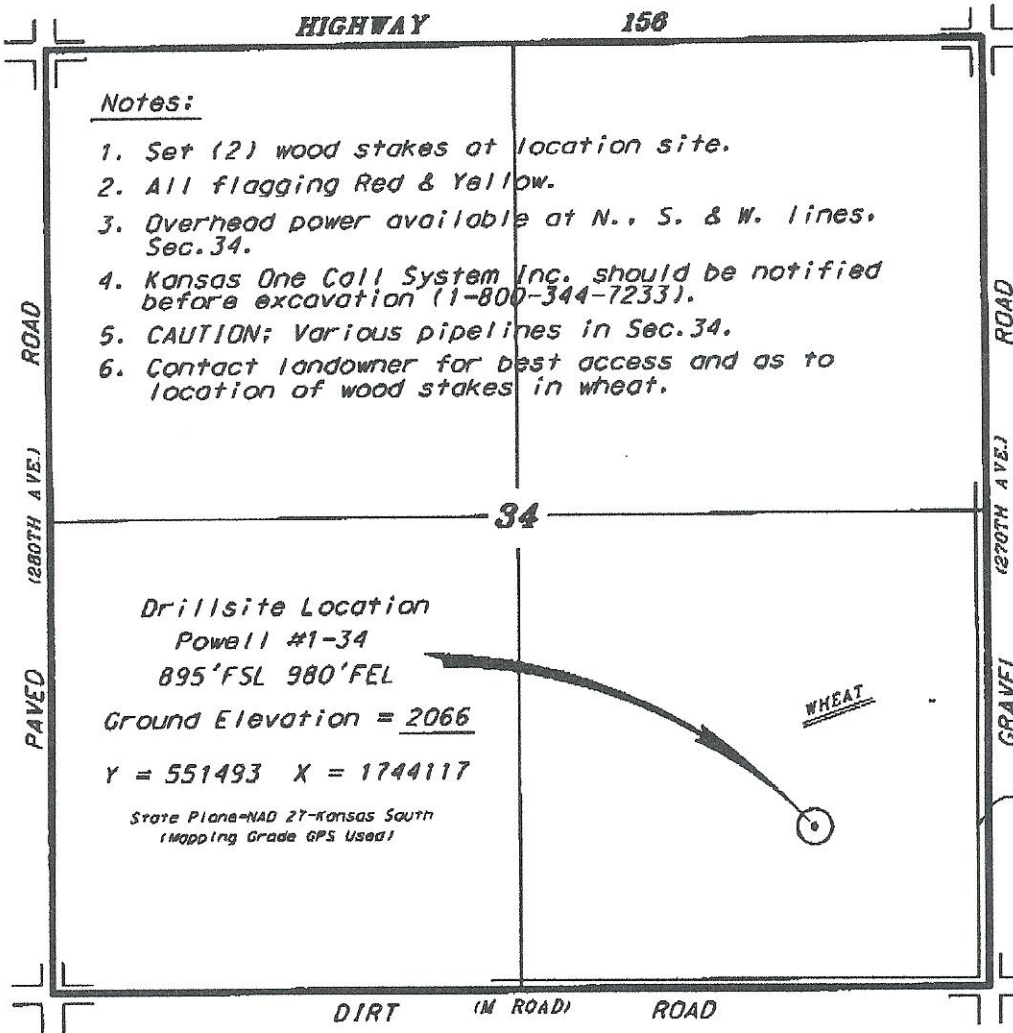


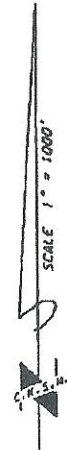
SHELBY RESOURCES, LLC/CAPTIVA II, LLC  
POWELL LEASE  
SE. 1/4, SECTION 34, T21S, R19W  
PAWNEE COUNTY, KANSAS



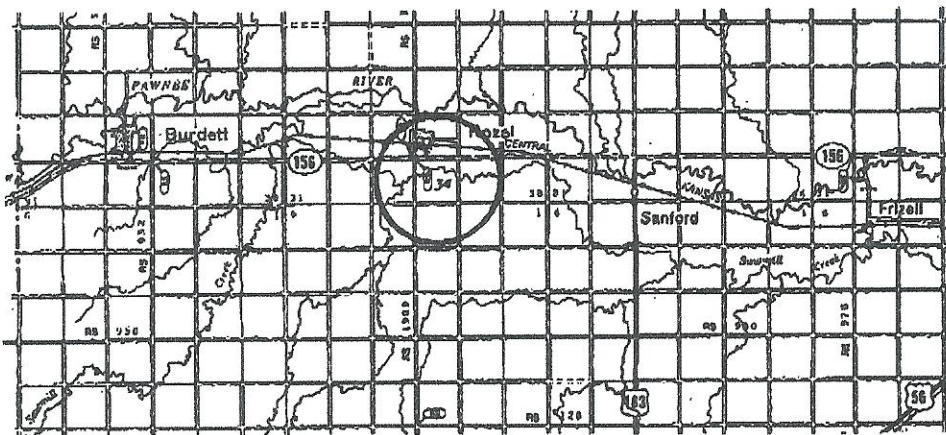
Notes:

1. Set (2) wood stakes at location site.
2. All flagging Red & Yellow.
3. Overhead power available at N., S. & W. lines, Sec. 34.
4. Kansas One Call System Inc. should be notified before excavation (1-800-344-7233).
5. CAUTION; Various pipelines in Sec. 34.
6. Contact landowner for best access and as to location of wood stakes in wheat.

Ingress and egress to location as shown on this plat is per usage only and may not be legally opened for public use. Contact landowner, tenant and county road department for access.



Drillsite Location  
Powell #1-34  
895'FSL 980'FEL  
Ground Elevation = 2066  
Y = 551493 X = 1744117  
State Plane-NAD 27-Kansas South  
(Mapping Grade GPS Used)



• Controlling data is based upon the best maps and photographs available to us and upon a regular visitation of land containing 640 acres.  
 • Approximate section lines were determined using the normal standard of care of oilfield surveys being conducted in the state of Kansas. The section corners, which establish the precise section lines, were not necessarily located, and the exact location of the drillsite location in the section is not guaranteed. Therefore, the operator securing this service and occupying this site and all other activities relating thereto agree to hold Central Kansas Oilfield Services, Inc., its officers and employees harmless from all losses, costs and expenses and hold entities released from any liability from incidental or consequential damages.  
 • Elevations derived from National Geospatial Intelligence Data.

06/06 June 1, 2012

CENTRAL KANSAS OILFIELD SERVICES, INC. (620)792-1977