

THIS DRAWING DOES NOT REPRESENT A BOUNDARY SURVEY, DISTANCES, COORDINATES AND BEARINGS SHOWN ARE NOT INTENDED TO BE DEFINITIVE IN ESTABLISHING ACTUAL TITLE BOUNDARIES. THIS DRAWING IS FOR CONSTRUCTION PURPOSES ONLY.

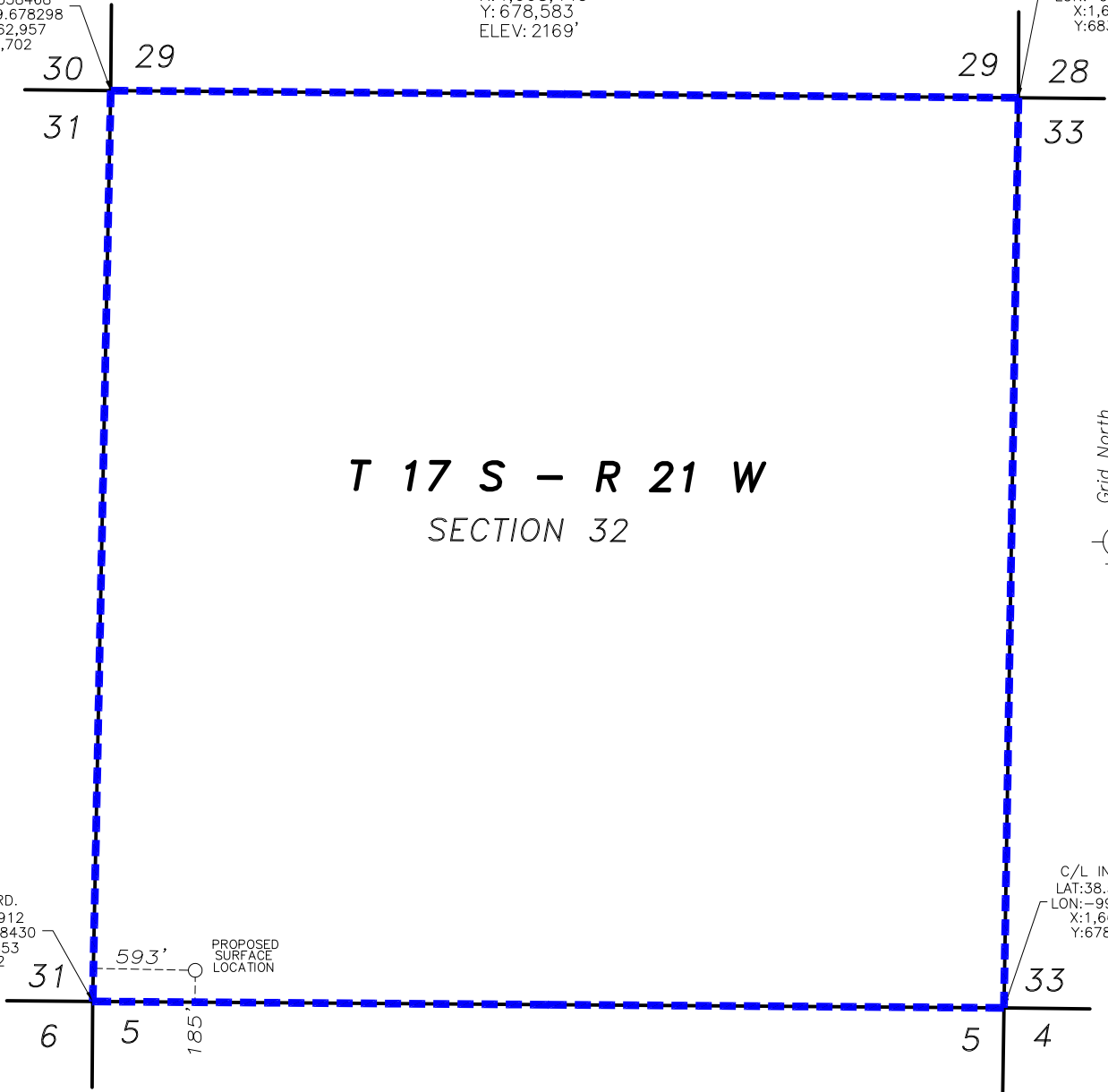
All Bearings, Distances, and Coordinates shown hereon are based on the Kansas State Plane Coordinate System, N.A.D. 27 Datum, South Zone.

PROPOSED
SURFACE LOCATION
593' FWL & 185' FSL
OF SECTION 32

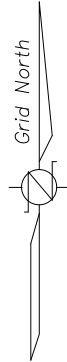
LAT: 38.524430
LON: -99.676353
X: 1,663,449
Y: 678,583
ELEV: 2169'

C/L INT. RD.
LAT: 38.538468
LON: -99.678298
X: 1,662,957
Y: 683,702

C/L INT. RD.
LAT: 38.538536
LON: -99.659828
X: 1,668,240
Y: 683,661



T 17 S - R 21 W
SECTION 32



C/L INT. RD.
LAT: 38.523912
LON: -99.678430
X: 1,662,853
Y: 678,402

PROPOSED
SURFACE
LOCATION

C/L INT. RD.
LAT: 38.523992
LON: -99.659894
X: 1,668,156
Y: 678,365

--- = UNIT LINE

FINAL COPY

PROPOSED WELL LOCATION
ENCANA OIL & GAS (USA) INC.
CASEY 32V-1 SWD
NESS COUNTY, KANSAS
SCALE: 1" = 1000'