



TRILOBITE TESTING, INC.

DRILL STEM TEST REPORT

Berexco LLC.

17-9s-21w Graham

2020 N. Bramblewood
Wichita, Ks. 67206+1094

Cooley # B-21

Job Ticket: 47254

DST#: 3

ATTN: Bryan Bynog

Test Start: 2012.04.09 @ 04:40:05

GENERAL INFORMATION:

Formation: **Arbuckle**

Deviated: No Whipstock: ft (KB)

Time Tool Opened: 07:01:30

Time Test Ended: 12:07:59

Test Type: Conventional Bottom Hole (Reset)

Tester: Andy Carreira

Unit No: 39

Interval: 3740.00 ft (KB) To 3773.00 ft (KB) (TVD)

Reference Elevations: 2277.00 ft (KB)

Total Depth: 3773.00 ft (KB) (TVD)

2266.00 ft (CF)

Hole Diameter: 7.88 inches Hole Condition: Fair

KB to GR/CF: 11.00 ft

Serial #: 8647 Outside

Press @ Run Depth: 44.77 psig @ 3741.00 ft (KB)

Capacity: 8000.00 psig

Start Date: 2012.04.09

End Date:

2012.04.09

Last Calib.:

2012.04.09

Start Time:

04:40:05

End Time:

12:07:59

Time On Btm:

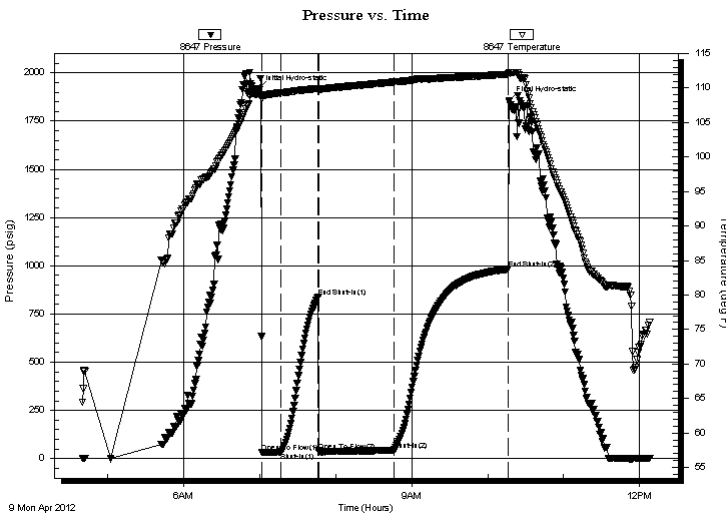
2012.04.09 @ 06:59:00

Time Off Btm:

2012.04.09 @ 10:16:59

TEST COMMENT: IF:(15min) Weak surface blow
ISl:(30min) No Return
FF:(60min) Weak surface blow , Died in 16 min.
FSl:(90min) No Return

PRESSURE SUMMARY



Time (Min.)	Pressure (psig)	Temp (deg F)	Annotation
0	1915.80	109.02	Initial Hydro-static
3	32.09	108.40	Open To Flow (1)
18	34.86	109.26	Shut-In(1)
48	838.55	109.92	End Shut-In(1)
48	36.98	109.75	Open To Flow (2)
108	44.77	110.87	Shut-In(2)
198	983.40	112.00	End Shut-In(2)
198	1856.33	112.21	Final Hydro-static

Recovery

Length (ft)	Description	Volume (bbl)
40.00	OCM o=25% m=75%	0.20
10.00	CO o=100%	0.05

* Recovery from multiple tests

Gas Rates

	Choke (inches)	Pressure (psig)	Gas Rate (Mcf/d)



**TRILOBITE
TESTING, INC.**

DRILL STEM TEST REPORT

FLUID SUMMARY

Berexco LLC.

17-9s-21w Graham

2020 N. Bramblewood
Wichita, Ks. 67206+1094

Cooley # B-21

Job Ticket: 47254

DST#: 3

ATTN: Bryan Bynog

Test Start: 2012.04.09 @ 04:40:05

Mud and Cushion Information

Mud Type: Gel Chem

Cushion Type:

Oil API:

deg API

Mud Weight: 9.00 lb/gal

Cushion Length:

ft

Water Salinity:

ppm

Viscosity: 61.00 sec/qt

Cushion Volume:

bbbl

Water Loss: 7.98 in³

Gas Cushion Type:

Resistivity: ohm.m

Gas Cushion Pressure:

psig

Salinity: 2000.00 ppm

Filter Cake: inches

Recovery Information

Recovery Table

Length ft	Description	Volume bbbl
40.00	OCM o=25% m=75%	0.197
10.00	CO o=100%	0.049

Total Length: 50.00 ft Total Volume: 0.246 bbl

Num Fluid Samples: 0

Num Gas Bombs: 0

Serial #:

Laboratory Name:

Laboratory Location:

Recovery Comments:

