



Well Driving Directions and Coordinates

Casey 32V-1
Casey 23H-2
Casey 5H-1

County: Ness, Kansas

Entrance Coordinates:

Latitude: N 38° 31' 27.10"

Longitude: W -99° 40' 37.64"

Gate Combination: NA

At the intersection of US Hwy 283 and Hwy 96 in Ness City, Kansas, go 12.4 miles east to County Road EE. Turn left (North) on EE Road and go 5.0 miles to County Road 180. At the intersection of County Roads HH and 150, turn right (East) and proceed 400ft, location entrance road on the left (North) side of CR 180.

Charlie Kusiak - Land Agent

405-313-1976

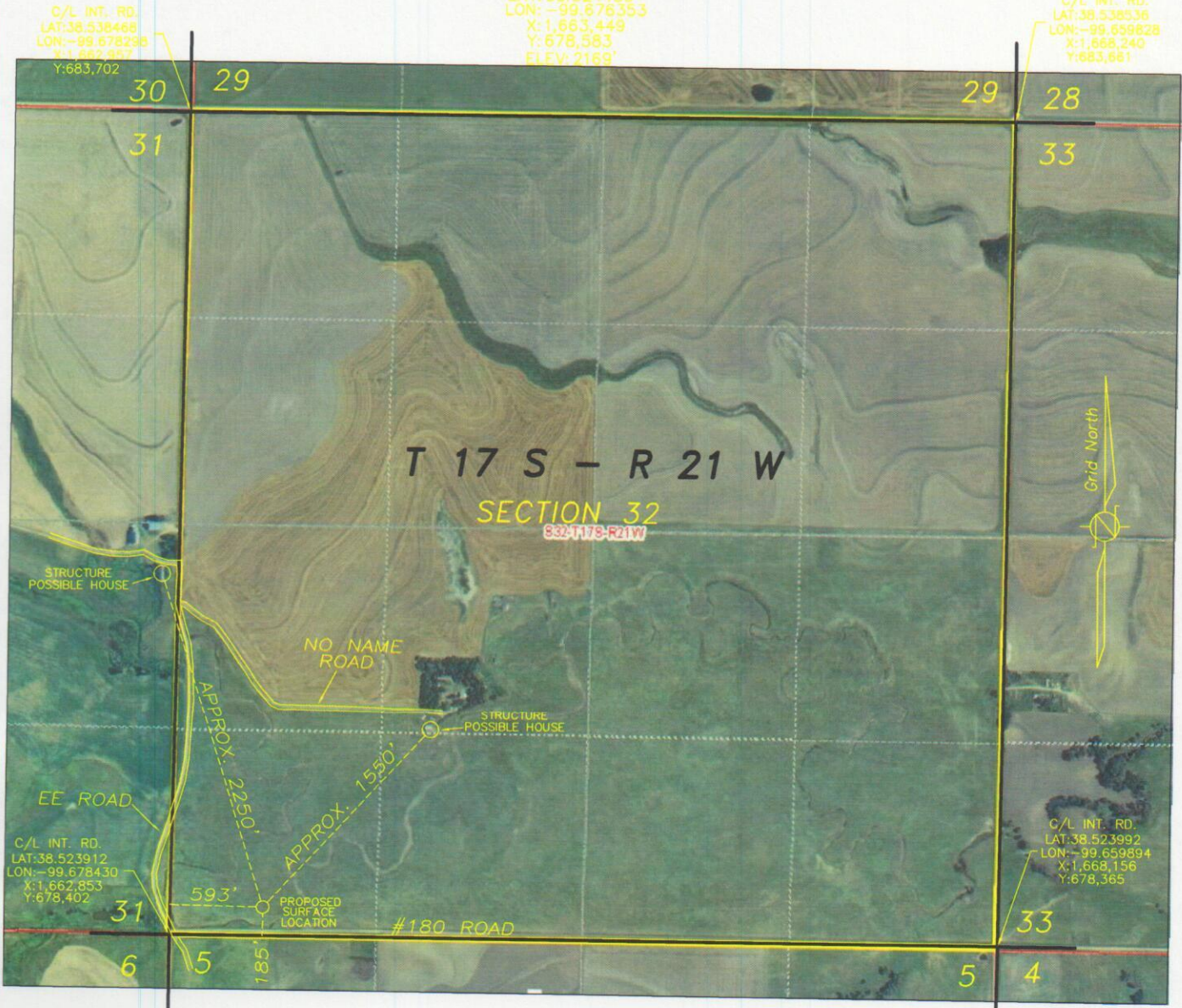
THIS DRAWING DOES NOT REPRESENT A BOUNDARY SURVEY. DISTANCES, COORDINATES AND BEARINGS SHOWN ARE NOT INTENDED TO BE DEFINITIVE IN ESTABLISHING ACTUAL TITLE BOUNDARIES. THIS DRAWING IS FOR CONSTRUCTION PURPOSES ONLY.

All Bearings, Distances, and Coordinates shown hereon are based on the Kansas State Plane Coordinate System, N.A.D. 27 Datum, South Zone.

**PROPOSED
SURFACE LOCATION
593' FWL & 185' FSL
OF SECTION 32**

LAT: 38.524430
LON: -99.676353
X: 1,663,449
Y: 678,583
ELEV: 2169'

C/L INT. RD.
LAT: 38.538036
LON: -99.659828
X: 1,668,240
Y: 683,661



C/L INT. RD.
LAT: 38.523992
LON: -99.659894
X: 1,668,156
Y: 678,365

= UNIT LINE

FINAL COPY

**PROPOSED WELL LOCATION
ENCANA OIL & GAS (USA) INC.
CASEY 32V-1 SWD
NESS COUNTY, KANSAS
SCALE: 1" = 1000'**

T120256-32V-1 SWD

DATE: 6-5-2012

T 17 S - R 21 W
SECTION 32

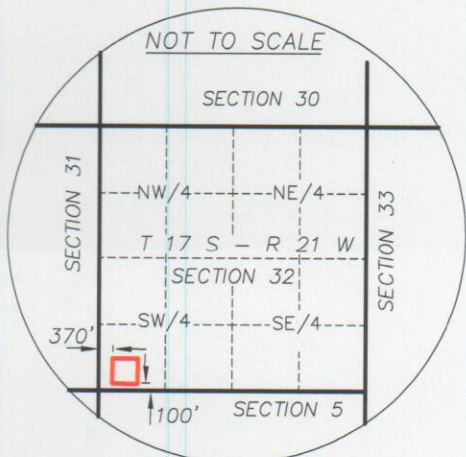
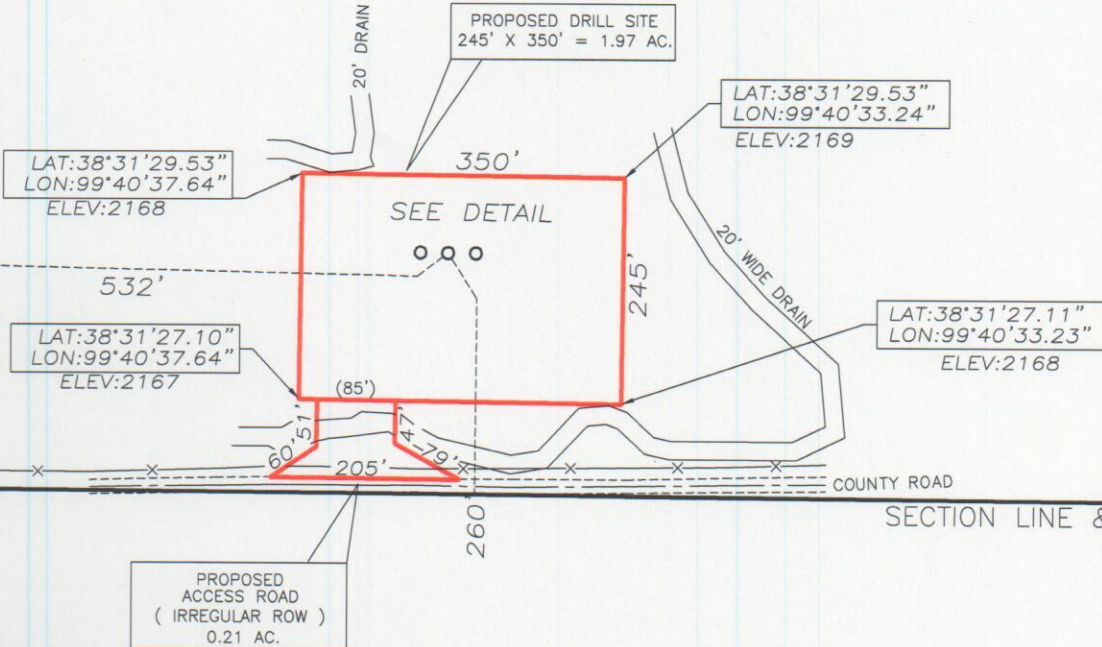
SURFACE OWNER
L. PATRICK CASEY



SECTION 5 WELL
LAT: 38°31'28.69"
LON: 99°40'35.25"
ELEV: 2169

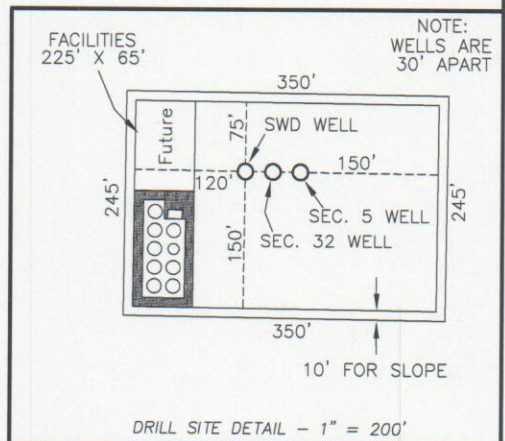
SECTION 32 WELL
LAT: 38°31'28.69"
LON: 99°40'35.63"
ELEV: 2169

SWD WELL
LAT: 38°31'28.69"
LON: 99°40'36.00"
ELEV: 2169



REVIEW COPY

**CONSTRUCTION PLAT
SHOWING PROPOSED
DRILL SITE AND ACCESS ROAD
ENCANA OIL & GAS (USA) INC.
CASEY 32V-1, 32H-2 & 5H-1
NESS COUNTY, KANSAS
SCALE: 1" = 200'**



ACCESS ROAD = 0.21 AC.
DRILL SITE = 1.97 AC.

TOTAL = 2.18 AC.