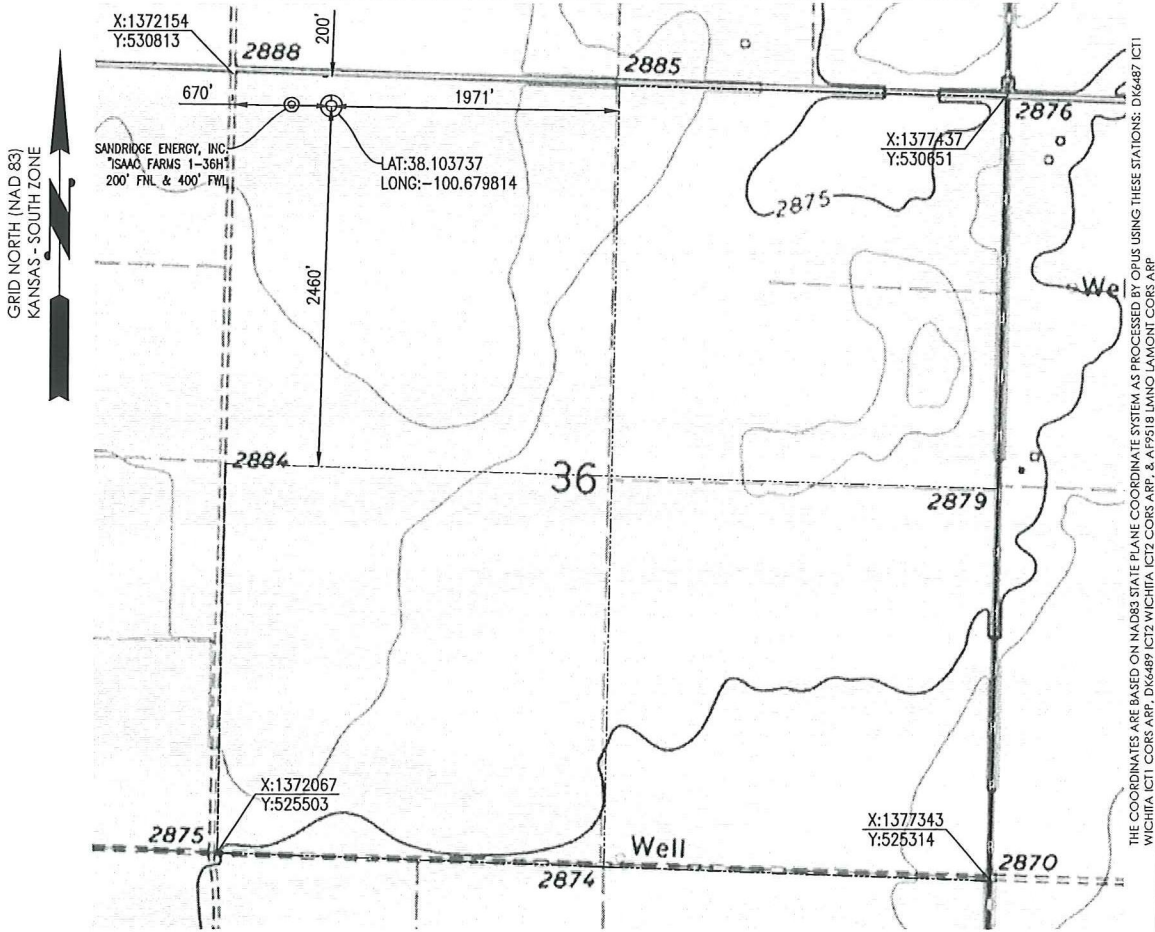


FINNEY COUNTY, KANSAS  
 200' FNL - 670' FWL SECTION 36 TOWNSHIP 22S RANGE 31W 6TH P.M.



THE COORDINATES ARE BASED ON NAD83 STATE PLANE COORDINATE SYSTEM AS PROCESSED BY OPUS USING THESE STATIONS: D16487 ICT1 WICHITA ICT1 CORS ARP, D16489 ICT2 WICHITA ICT2 CORS ARP, & A19518 LINO LAMONT CORS ARP

OPERATOR: SANDRIDGE ENERGY, INC.

WELL NO: 1-36

**ELEVATION:**  
 2886' GR. AT STAKE

LEASE NAME: RYAN SWD

TOPOGRAPHIC & VEGETATION: LOCATION FELL IN A FIELD

GOOD DRILL SITE: YES

REFERENCE STAKES OR ALTERNATE LOCATION STAKES SET: NONE

BEST ACCESSIBILITY TO LOCATION: NORTH LINE

**DISTANCE & DIRECTION**  
 FROM HWY JCT OR TOWN: FROM THE JCT. OF KS-23 & KS-156, TRAVEL WEST ON KS-156 FOR ±11.0 MILES, TURN RIGHT (NORTH) ON N MENNONITE RD & TRAVEL ±3.0 MILES, TURN LEFT (WEST) ON E ROCKPIT RD & TRAVEL ±1.0 MILES TO THE NW CORNER OF S36, T22S-R31W.

(THE FOLLOWING INFORMATION WAS GATHERED USING A GPS RECEIVER ACCURACY ±2-3 METERS)

GPS DATUM: NAD-27	STATE PLANE COORDINATES: ZONE: KS-SOUTH
LAT: 38.103737	X: 1372820.854
LONG: -100.679814	Y: 530592.685

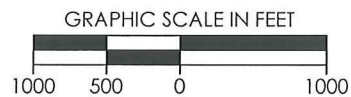
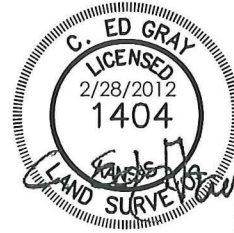
SURVEYOR'S CERTIFICATE: DATE STAKED: 02-22-2012

I, C. ED GRAY, KANSAS LICENSED PROFESSIONAL LAND SURVEYOR, NO. 1404, DO HEREBY CERTIFY THAT THIS PLAT REPRESENTS THE RESULTS OF A SURVEY MADE ON THE GROUND UNDER MY SUPERVISION.

**GENERAL NOTES:**

THE TIES AND FOOTAGES SHOWN ON THIS PLAT ARE FROM LINES OF OCCUPATION FROM A SURVEY MADE ON THE GROUND AND / OR BEARING AND DISTANCES FROM THE GENERAL LAND OFFICE PLAT OF THE AREA SHOWN AND MAY NOT BE THE ACTUAL PROPERTY CORNERS. THIS PLAT DOES NOT REPRESENT A TRUE BOUNDARY SURVEY.

DISTANCES SHOWN IN (PARENTHESIS) ARE CALCULATED BASED UPON THE QUARTER SECTION BEING 2640 FEET, THOSE SHOWN IN [BRACKETS] ARE BASED ON GLO (GENERAL LAND OFFICE) DISTANCES AND HAVE NOT BEEN MEASURED.



REVISION		<b>SandRidge</b>	
▲	REVISED SHL (02-23-2012)	"RYAN SWD 1-36" PART OF THE NW1/4 OF SECTION 36, T-22-S, R-31-W PROPOSED DRILL SITE FINNEY COUNTY, KANSAS	
▲	REVISED CL LIMITS (02-28-2012)		
SCALE: 1" = 1000'		PLOT DATE: 02-28-2012	DRAWN BY: S.ANDER
		SHEET NO.: 1 OF 3	