

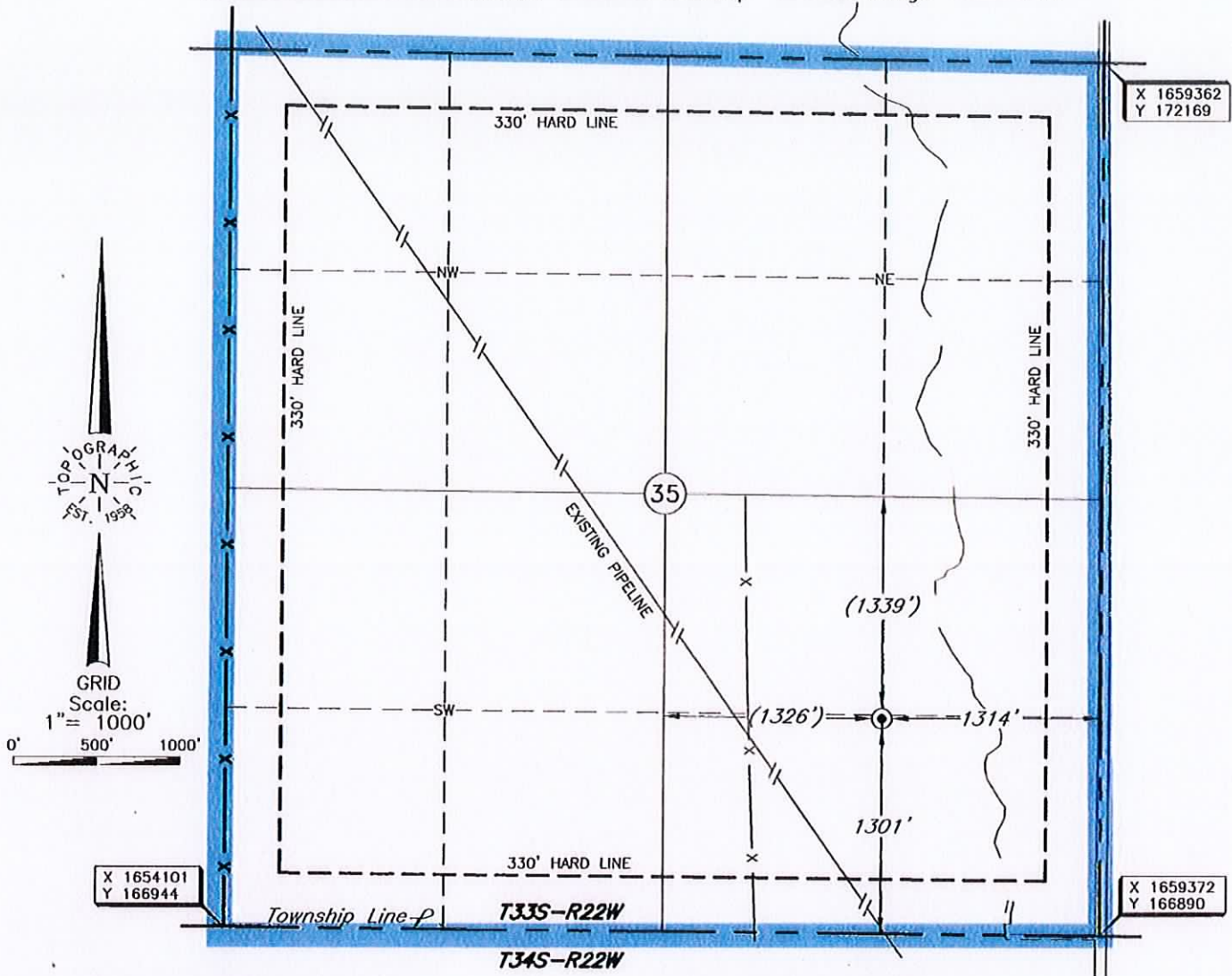
TOPOGRAPHIC LAND SURVEYORS

6709 NORTH CLASSEN BLVD., OKLA. CITY, OKLA. 73116 • LOCAL (405) 843-4847 • OUT OF STATE (800) 654-3219
 Certificate of Authorization No. LS-99, Exp. Dec. 31, 2013

CLARK

County, Kansas

1301'FSL-1314'FEL Section 35 Township 33S Range 22W P.M.



Distances shown in (parenthesis) are calculated based upon the Quarter Section being 2640 feet, those shown in [brackets] are based on GLO (General Land Office) distances and have **NOT** been measured on the ground.

CORNER COORDINATES ARE TAKEN FROM POINTS SURVEYED IN THE FIELD.

Operator: STRAT LAND EXPLORATION COMPANY

Lease Name: PIKE

Well No.: 1-35

ELEVATION:
1854' Gr. at Stake

Topography & Vegetation Loc. fell in terraced wheat field

Good Drill Site? Yes Reference Stakes or Alternate Location
 Stakes Set None

Best Accessibility to Location From East off county road

Distance & Direction
 from Hwy Jct or Town From the junction of St. Hwy 34 & US Hwy 160, go South on St. Hwy 34 ± 2 miles, then South, Southeast ± 0.8 mile, then on county road go West ± 1.3 miles and South ± 2 miles to the Southeast Corner of Section 35, T33S - R22W.

Date of Drawing: Mar. 29, 2012

Invoice # 180279 Date Staked: Mar. 21, 2012

NMA

(This information was gathered with a GPS receiver with Sub-Meter accuracy.)
 DATUM: NAD-27
 LAT: 37°07'21.8"N
 LONG: 99°40'21.9"W
 LAT: 37.122710747° N
 LONG: 99.672763719° W
 STATE PLANE
 COORDINATES: (US Feet)
 ZONE: KS SOUTH
 X: 1658056
 Y: 168205

CERTIFICATE:

I, T. Wayne Fisch a Kansas Licensed Land Surveyor and an authorized agent of Topographic Land Surveyors, do hereby certify that the above described well location was surveyed and staked on the ground as shown herein.

Kansas Lic. No. 1213

