

CORING REPORT

DRILLING TIME AND SAMPLE LOG

COMPANY *Trans Pacific Oil Corp.*
 CASE *Quenzner-Norton 'B' Unit #1-13*
 FIELD *Lazy 17 West*
 LOCATION *5' FSL, 2310' FEL*
 WELL NO. *13* DEPTH *175* FMS. *26w*
 STATE *Ness* COUNTY *Kansas*
 OPERATOR *Duke Drilling Rig 4*
 START DATE *5/9/12* END DATE *5/18/12*
 WELL NO. *4490* DEPTH *4490*
 DEPTH *3600* TYPE MUD *Chemical*

ELEVATIONS
 SB *2489*
 DB _____
 GL *2480*
 Measurements Are A
 From *K.B.*

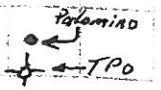
CASING
 SIZE *8 5/8" @ 215'*
 PRODUCTION *None*

ELECTRICAL SURVEYS
Log Tech
CNL/CDL/DIL/MEL

3700	TO	TD
3600	TO	TD
3700	TO	TD
3675	TO	TD

DRILLER *W. Bryce Bidleman*

FORMATION TOPS	LOG	SAMPLES	Reference Well: Palomino Quenzner 1-13 w/2 SAMPLES 13-175-26w
Anhydrite	1823 (+666)	+2'	
Base Anhydrite	1853 (+636)	Flat	
Heebner	3771 (-1282)	-11'	
Lansing	3809 (-1320)	-6'	
Stark	4057 (-1568)	-3'	
Base K.C.	4118 (-1629)	-6'	13
Fort Scott	4313 (-1824)	Flat	
Mississippi	4404 (-1915)	+6'	
Miss Dolomite	4407 (-1918)	+7'	

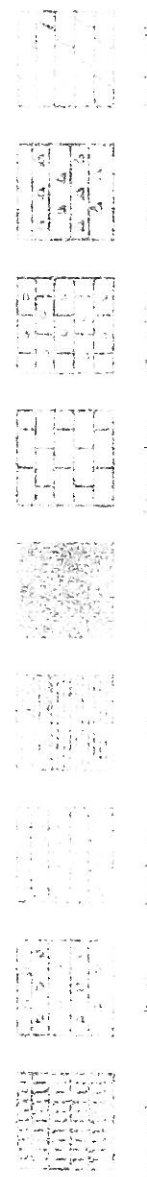


REMARKS *Positive structural position was achieved at this location but due to negat drill stem test results, the Quenzner-Norton 'B' Unit 1-13 was plugged and abandoned.*

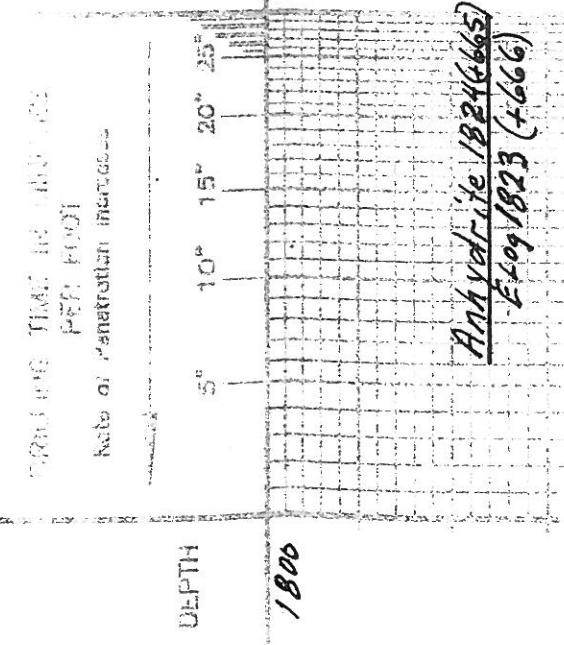
Respectfully,

W. Bryce Bidleman

LEGEND



CORING TIME IN MINUTES PER FOOT



DEPTH *1800*

SAMPLE DESCRIPTIONS

LITHOLOGY

REMARKS

*Anhydrite 1823 (+666)
Base Anhydrite 1853 (+636)*

Anhydrite 1824 (+665)
Elog 1823 (+666)

Base
Anhydrite 1853 (+636)
Elog Same

50

1900

3600

50

3700

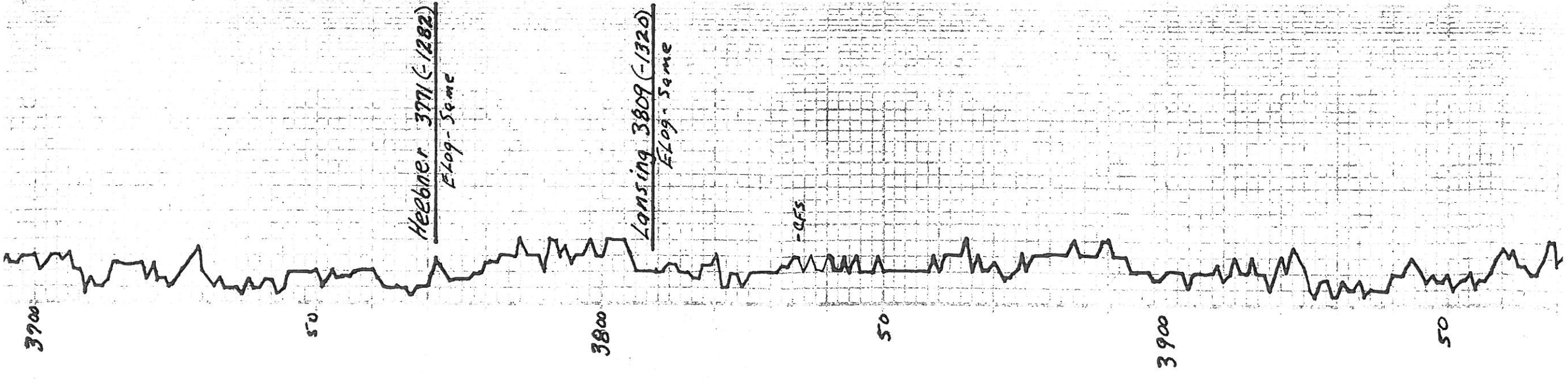
LM - CRM - TR, FA FOSS,
DSE.

LM - IP - LT, GY, FA, FOSS, MOST
DSE. TR CNT - GY, MOST IN PT.

LM - AA, TR CNT,
SH - GRD - GY, SILTY IN PT.

LM - TM, FA, FOSS, FEW SCATT
NGS, MOST DSE.

LM - AA, FEW FOSS MAQS.



LM-TU → LTGY, FX, FOSS, MOST DSE, TR CHT-GY, MDT IN PT.

LM-AA, TR CHT.
SH-GRU → GY, SILTY IN PT.

LM-TU, FX, FOSS, FEW SCATT VGS, MOST DSE.
LM-AA, FEW FOSS MADS.

LM-TU → GY, IN, FX, FOSS, MOSTLY DSE, FEW SCATT VGS, FOSS MADS, CHT-GY, FOSS.

LM-TU, FX, FOSS, DSE, CHT, IN PT. FR AMT BY CHT.

LM-CRM → TU, F → MX, FOSS, DDLT, PR VGS, IN T-FOSS MADS, SH-MAR → GY → BLK.

LM-TU → GY, FX, DSE, ARG IN PT. SH-BLK, CARB, SOFT.

SH-MAR → GRU → GY → BLK.

SH-AA.
LM-CRM → TU → LTGY, FX, DSE, CHT IN PT.

LM-WH → CRM, FX, P → FR VGS, P, SH AMT CHT, DSE IN PT.

LM-WH → CRM, FX, FOSS, FEW VGS, FX AMT CHT.
LM-AA, FEW DDLT ES, SCATT PR VGS, P. SH-RO → GY.

LM-CRM → TU, FX, FOSS, FEW SCATT PR VGS, P → FR VGS, DDLT, DRAGS, DSE AD, NO DDLT, DULL BLU.

LM-CRM → TU, FX, FEW VGS, MOSTLY DSE, CHT IN PT. N.S. CHT-WH → FX.

LM-TU, FX, P → DSE, HARD, SOME CLR CAL, SH AMT CHT, CHT-WH.

LM-AA, CHT-AA.
SH-GRU → GY → BLK, PYR IN PT.

SH-AA.

LM-TU, F → MX, FEW FOSS, MOST DSE, FEW SCATT VGS, SILY-AA.

LM-CRM, FX, FOSS, DDLT IN PT. P → FR VGS, IN T-FOSS, SCATT PR VGS, IN T-FOSS, WH, REST DSE, CHT-WH, TRUSS, N.S.

LM-CRM, F → MX, FOSS, DDLT IN PT. SCATT PR VGS, IN T-FOSS, DSE IN PT. CHT-AA.

LM-AA.
SH-RO → GRU → GY.

LM-CRM → TU, F → MX, FOSS, PR SCATT VGS, P → FR VGS, FR AMT CHT. CHT-WH → TU.

LM-TU, F → MX, P → FR VGS, IN T-FOSS, CHT-WH → TU, N.S.

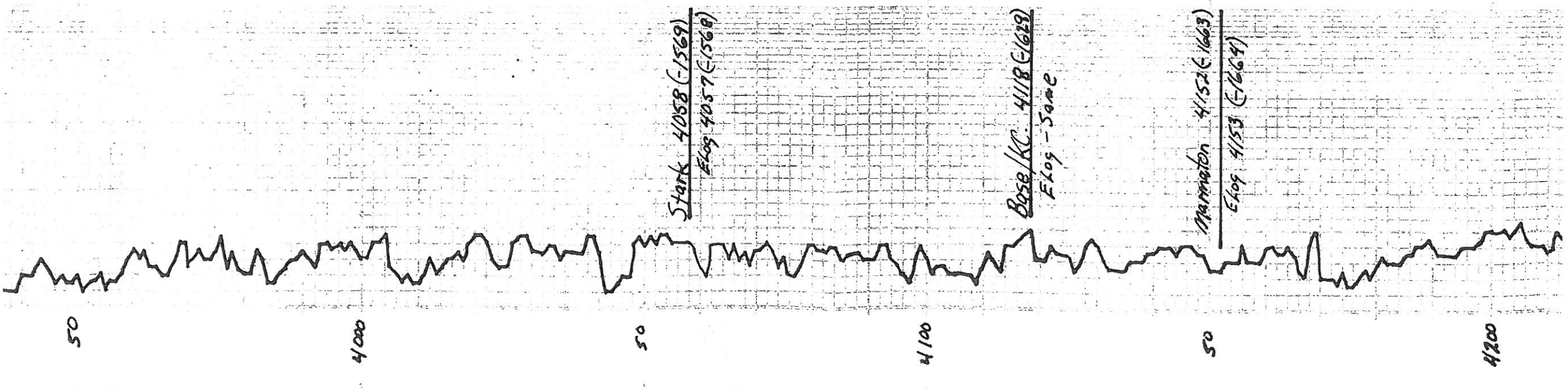
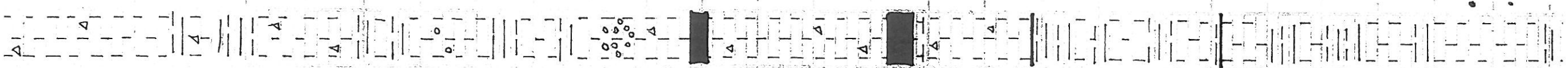
LM-CRM → TU, F → MX, FOSS, P → FR VGS, IN T-FOSS, MADS, P. N.S. CHT-AA.

LM-CRM, F → MX, FOSS, DDLT IN PT. P → FR VGS, DDLT, CHT IN PT. CHT-WH.

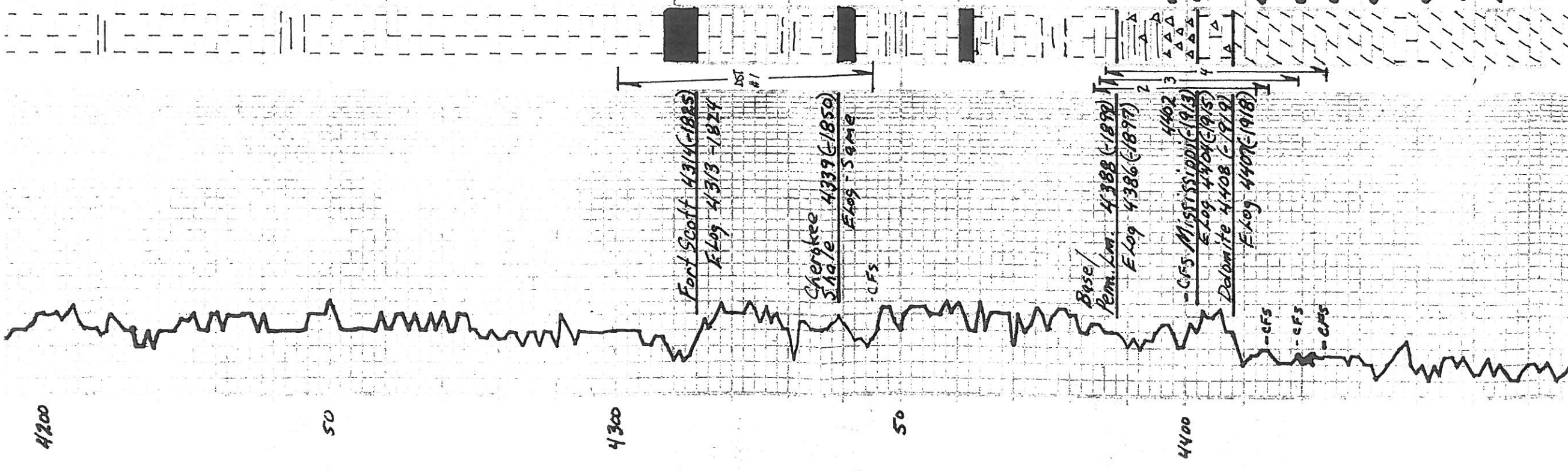
LM-CRM → TU, F → MX, FOSS, DDLT, P → FR VGS, IN T-FOSS, SH-RO → GRU → GY.

LM-CRM → TU, F → MX, DDLT, IN PT. P → FR VGS, IN T-FOSS, MADS, SH-RO → GRU → GY.

PPR VEGY, FOSS MID, INTX LW
 P. MS. CHT-AA.
 LM-CRM, F-MX, FOSS, OOGLT IN PT,
 P-FX VEGY-DOMD & CHRY IN
 PT. CHT-WH. MS.
 LM-CRM → TM, F-MX, FOSS,
 OOGLT, P-FX VEGY, DOMD,
 INT. LW & CHT-AA.
 SH-RD → GRU → GY.
 LM-CRM → TM, F-MX, OOGLT
 IN PT, FEW VEGY, DOMD, DSE
 IN PT, FR AMT CHK, SL IN CR
 IN CHT.
 LM-CRM → TM, F-MX, FOSS, SCATT
 PR VEGY, FOSS MID, MOSTLY
 DSE, CHRY IN PT. CHT-WH.
 SH-AA.
 LM-TU → BW, GY → BLK, Fx, DSE.
 SH-GRU → GY → BLK, CARB
 IN PT.
 LM-TU → LTGY, Fx, MOST DSE.
 CHT-WH.
 LM-CRM → TM, F → MX, HVX FOSS
 IN PT, FR VEGY, INT. FOSS
 GY. SH-GRU → GY →
 BLK.
 LM-TU, F → MX, FOSS, OOGLT,
 FR VEGY, DOMD & MS.
 LM-CRM → TM, Fx, OOGLT IN
 PT, MOST DSE.
 LM-TU → LT BW, Fx, FEW
 FOSS, DSE, HARD.
 LM-TU, Fx, DDLIT, F → GD
 OOGLD & CRUWHY, MS.
 LM-TU, Fx, DSE, SMALL AMT.
 CHT-SM.
 SH-GE → BLK, CARB IN PT.
 LM-TU, Fx, FEW FOSS, MOST
 DSE. CHT-AA.
 LM-TU → BW, Fx, DSE, CHRY
 IN PT.
 LM-TU → LTGY, Fx, FOSS, OOGLT
 IN PT, DSE.
 CHT-TU, TRAIL.
 LM-AA, CHT-WH → TM.
 SH-BW → GY → BLK.
 SH-BLK, CARB, SOFT.
 LM-CRM → TM, Fx, HVX IN PT,
 MOSTLY DSE. CHT-WH,
 ABUND.
 LM-TU → GY, Fx, DSE, CHRY,
 AR, GY IN PT. CHT-WH → GY.
 SH-GRU → GY → BLK, SIKTY IN PT.
 SH-AA.
 LM-TU → BW, Fx, DSE, HARD,
 SBALTY.
 LM-TU → BW → LT GRU → GY,
 Fx, DSE.
 SH-GRU → GY → BLK.
 SH-GRU → GY → BLK, SIKTY IN PT.
 PR PYR. LM-AA.
 LM-TU → LTGY, Fx, DSE,
 SH AMT. CHRY.
 LM-TU → GY → LT GRU, Fx, DSE,
 ARE IN PT. SH-GRU, SIKTY.
 LM-TU → BW, Fx, DSE,
 SH-GRU → GY → BLK, SIKTY IN PT.
 LM-TU, Fx, FOSS, SCATT PR IN
 PT, FEW HVX FOSS, MS, PS
 FOY, TARTY STU, FEW GAY, BOB
 ON GRU, DULL FLY, No 900R.
 LM-TU, Fx, FEW FOSS, PR IN
 PT, VEGY, FR FOSS, MS, PS
 PS, SCATT STU, DULL FLY,
 No 900R.



LM-TU, FX, FEW FOSS, PR PIN
 PT, VAGY, FEW FOSS, MS
 PS SPOTTY STU, FO, DULL FLU,
 No OOR.
 LM-TU, FX, FEW FOSS, DSE,
 FEW KARL. MS.
 LM-TU → GY, FX, DSE, HARD,
 SH-GAR-GY → GY, SILTY.
 LM-AA
 SH-RD → GY.
 LM-TU → GY, FX, DSE, HARD,
 SOME CHK.
 LM-GY-TU → GY, FX, FEW FOSS,
 DSE, HARD. MS.
 LM-GY-TU → GY, FX, DSE,
 arenaceous in pt.
 LM-GY-TU → GY, FX, STAY IN PT,
 SOME CHK.
 SH-DK GY → BAK.
 LM-DK GY, FX, DSE, MIST HARD,
 SH-DK GY → BAK.
 LM-GY, FX, DSE, SILTY IN PT.
 SH-DK GY → BAK, CARB IN PT.
 LM-TU → GY, FX, DSE, MIST HARD,
 SH-CK, CARB.
 LM-TU, FX, GY, MIST IN PT, CHK
 IN PT, SCATT PR, MIST, IN
 W/TR FO, GARB, BUBB, NO OOR.
 LM-TU → GY, FX, DSE, MIST HARD,
 MIST DSE, PR PR AND PT, SOME
 2nd GY, VY WIK OOR, DO SHOW
 IN SE.
 LM-TU → GY, FX, DSE, FEW
 OOR, FEW, FEW, FEW, FEW, FEW
 2nd GY, SCATT PR, PR, PT, TR
 VAGY, FEW FOSS, MIST, TR
 PR, MIST, FEW, FEW, FEW, FEW
 BUB, SPOTTY TU STU, FR OOR.
 LM-TU → GY, FX, DSE
 SILTY → AD → GY → BAK.
 LM-TU, FX, DSE, SCATT CAR, GAK,
 CHK IN PT, PT OOR, MS IN
 SP.
 LM-TU, FAMY, FEW FOSS, FR AND
 CR, 2nd GY, DSE, CHK IN PT.
 LM-TU, FX, FEW FOSS, FEW
 SPOTTY, DSE, SOME CHK.
 LM-AA.
 SH-GY → GY → BAK. SOME OOR.
 SH-CK.
 SH-AA. SCATT CHT - WH + TR +
 TR, VAGY, W/ SCATT PR AND TR
 BAK GY, STU, DO FO, DO OOR.
 LM-TU → GY, FX, DSE, MIST HARD,
 CHK IN PT.
 CHT - WH + YEL + ORANGE, TRIP IN PT,
 PR PIN, TR, FX, BAK, MIST, STU,
 TR, DK, BOW, HY FO, VY WIK OOR.
 DO: WH + TR, FAMY, SP, FOSS,
 PR, PR, VAGY, FEW FOSS, SOME MIST
 X, PR, GY, DOW, FO, STU, MICH
 SAT, FR, GY, GOOD OOR.
 DO: TU → GY, FAMY, SP, IN PT
 FOSS, FR, VAGY, FEW MIST, MIST
 X, PR, GY, SAT, STU, STRONG
 OOR, GO FLU.
 DO: TU, MIST, FOSS, PR, FR, VAGY, FOSS
 MIST, MIST, X, GY, GY, PR, GY, GY
 STU, GO OOR, FLU.
 DO: TU, MIST, FOSS, PR, FR, VAGY,
 MIST, MIST, FOSS, PR, FR, VAGY,
 STU, FR OOR.
 DO: AA. GY, FOSS, SAT, STU, GO
 OOR, FLU.
 LM-TU → GY, FX, DSE, MIST, IN PT,
 FOSS, PR, VAGY, FAMY, DSE, IN
 PT, SOME CHK, MS, IN PT.
 DO: TU, FAMY, SP, IN PT, FOSS, LIND
 DSE, IN PT, FEW, VAGY, FOSS, IN
 PR, FEW, STU, SOME BARKEN, IN
 PR OOR.
 DO: TU, MIST, FX, FEW, FEW, FEW
 VAGY, FAMY, STU, PR, FOSS, IN PT,
 ABW, BARKEN, IN PT, OOR.



DST #1 4300'-4345'
 30-75-60-90
 1st Open - Wk blow, built to
 2nd Open - Fair blow, built to
 24 min.
 Rec: 338' GIP
 40' oily Mud (188)
 FP: 9-15 / 20-24
 SIP: 536 / 367
 HP: 2078 / 2074
 DST #2 4384-4414'
 30-60-30-60
 1st Open - Weak blow, Die
 2nd Open - No blow
 Rec: 5' oily M (188)
 FP: 7-9 / 9-11
 SIP: 420 / 178
 HP: 2125 / 2124
 DST #3 4385-444
 30-75-60-90
 1st Open - Wk blow, built
 2nd Open - Wk blow, built
 Rec: 8' CO
 42' oily M (5020)
 50' Total
 FP: 10-19 / 20-26
 SIP: 489 / 274
 HP: 2133 / 2134
 DST #4 4386-442'
 30-75-60-90
 1st Open - Wk blow, built
 BOB / 16 1/2 m
 2nd Open - Wk blow, built
 L.

Ness

Kansas