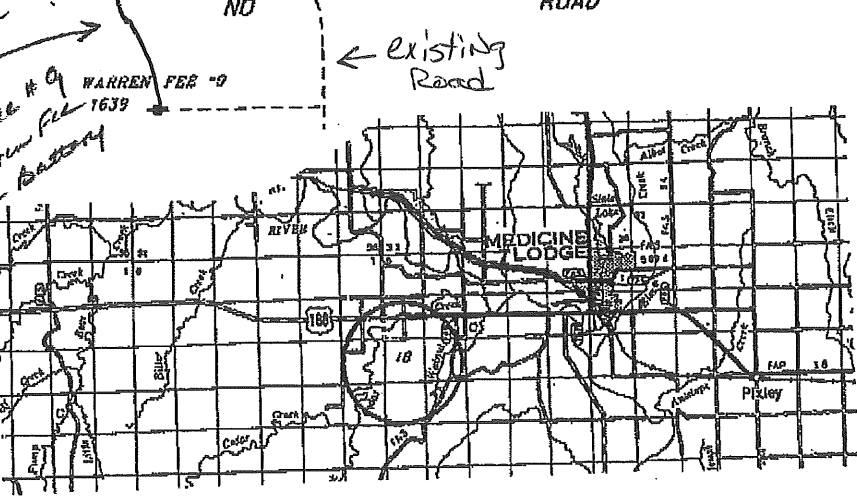
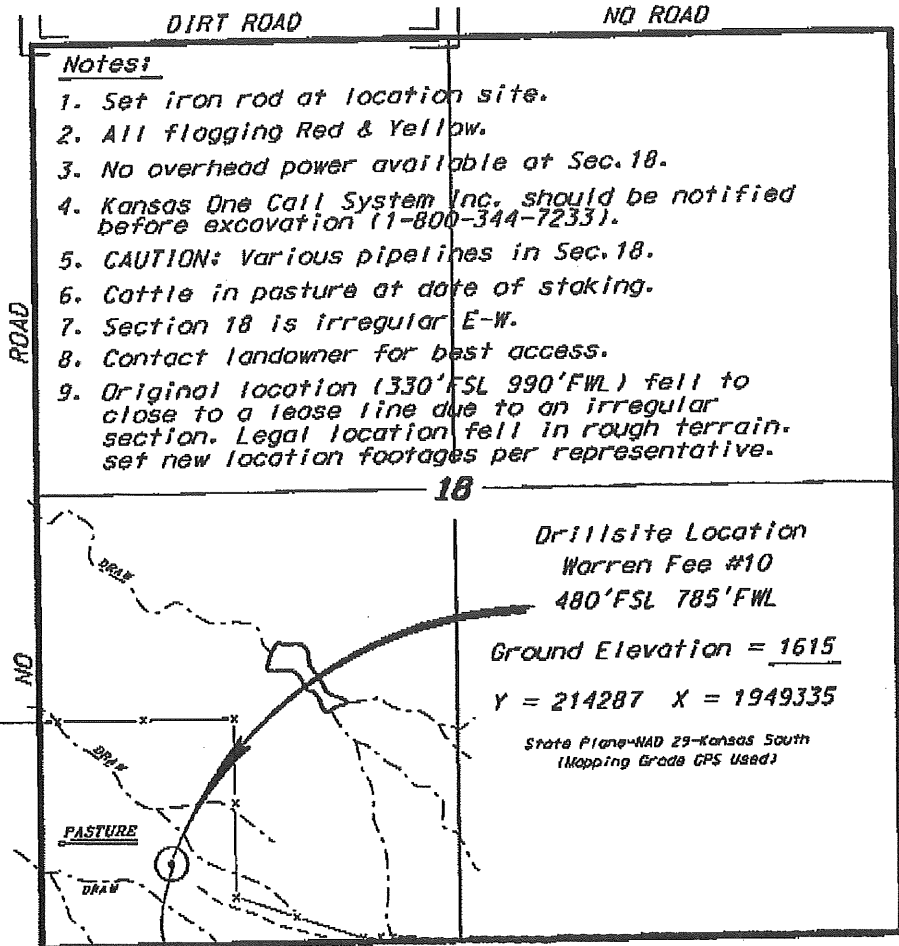


WOOLSEY OPERATING COMPANY, LLC
WARREN FEE LEASE
 SW. 1/4, SECTION 18, T32S, R12W
 BARBER COUNTY, KANSAS



Controlling data is based upon the best maps and photographs available to us and upon a regular section of land containing 640 acres.
 Approximate section lines were delineated using the normal standard of care of oilfield surveyors practicing in the state of Kansas. The section corners, which establish the precise section lines, were not necessarily located, and the exact location of the drillsite location in the section is not guaranteed. Therefore, the operator accepting this service and occupying this plot and all other drillsites relying thereon agree to hold Central Kansas Oilfield Services, Inc., its officers and employees harmless from all losses, costs and expenses and hold drilling released from any liability from incidental or consequential damages.
 Elevations derived from National Geodetic Vertical Datum.

Date June 29, 2012

CENTRAL KANSAS OILFIELD SERVICES, INC. (620)792-1977

SCALE 1" = 1000'