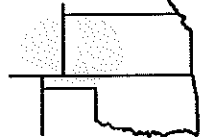


Pro-Stake LLC
 Oil Field & Construction Site Staking
 P.O. Box 2324
 Garden City, Kansas 67846
 Office/Fax: (620) 276-6159
 Cell: (620) 272-1499



n002622
 PLAT NO.

10092
 INVOICE NO.

Ritchie Exploration Inc.

OPERATOR

#1 Heskamp 16A

LEASE NAME

Ford Co, Ks
 COUNTY

16 26s 22w
 Sec. Twp. Rng.

Main loc. = 1000' FNL-350' FEL = 2397.1' gr.elev.
 Alt. #1 = 963' FNL- 444' FEL = 2394.6' gr. elev.
 Alt. #2 = 955' FNL- 465' FEL = 2394.7' gr. elev.

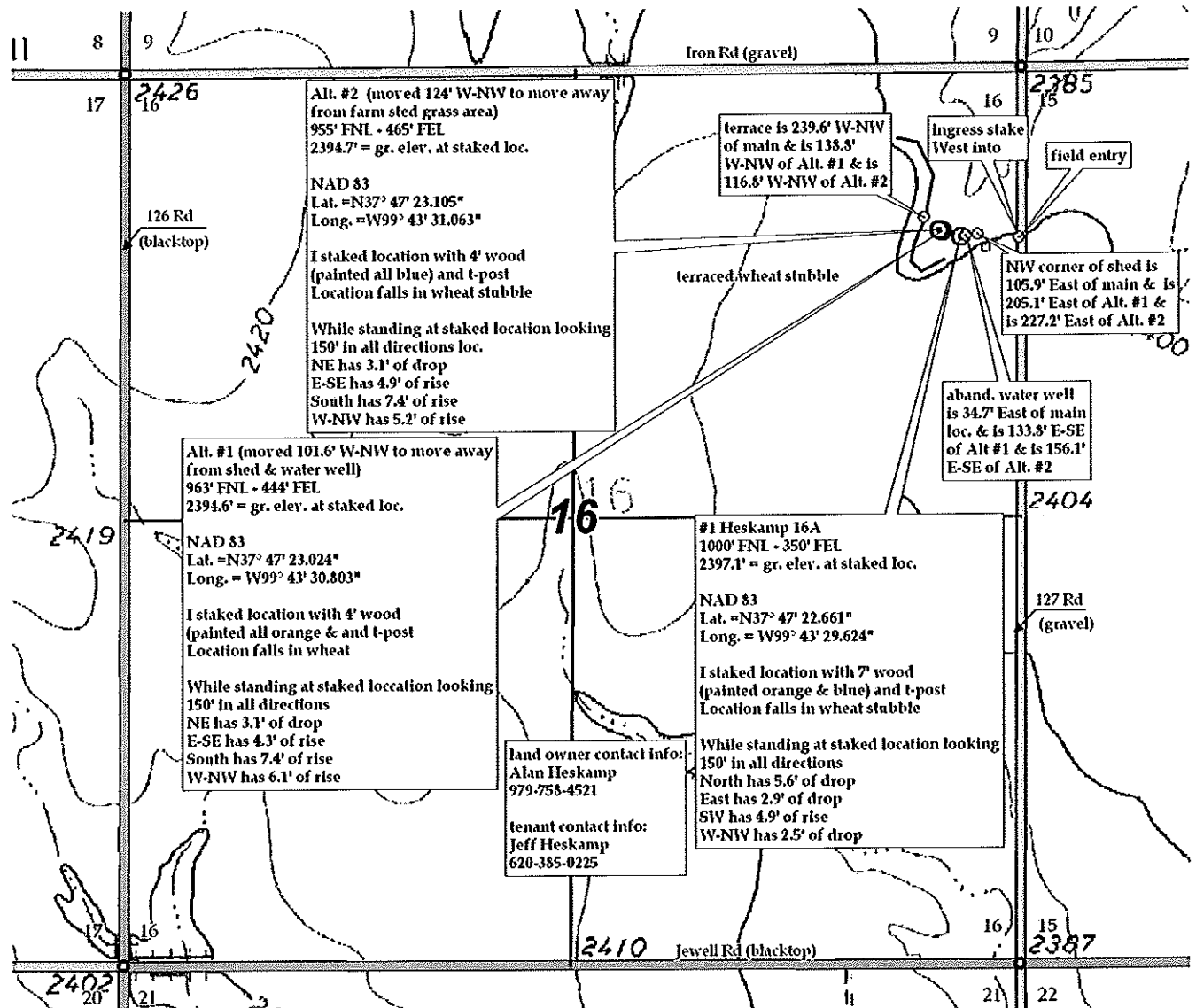
LOCATION SPOT

SCALE: 1" = 1000'
 DATE STAKED: June 6th, 2012
 MEASURED BY: Ben R.
 DRAWN BY: Luke R
 AUTHORIZED BY: Justin C.



Directions: From the NW side of Spearville Ks at the intersection of Hwy 50 & Lake Rd/ Main St South – Now go 0.4 mile SE on Main St – Now go 0.1 mile East on Davis St – Now go 1.5 mile South on Spearville/Ford Rd – Now go 1.6 mile East on Correction Line Rd – Now go 2.3 mile South on 127 Rd to the NE corner of section 16-26s-22w – Now go 0.2 mile South on 127 Rd to ingress stake West into – Now 350' West though wheat stubble into main staked location.
Final ingress must be verified with land owner or Operator.

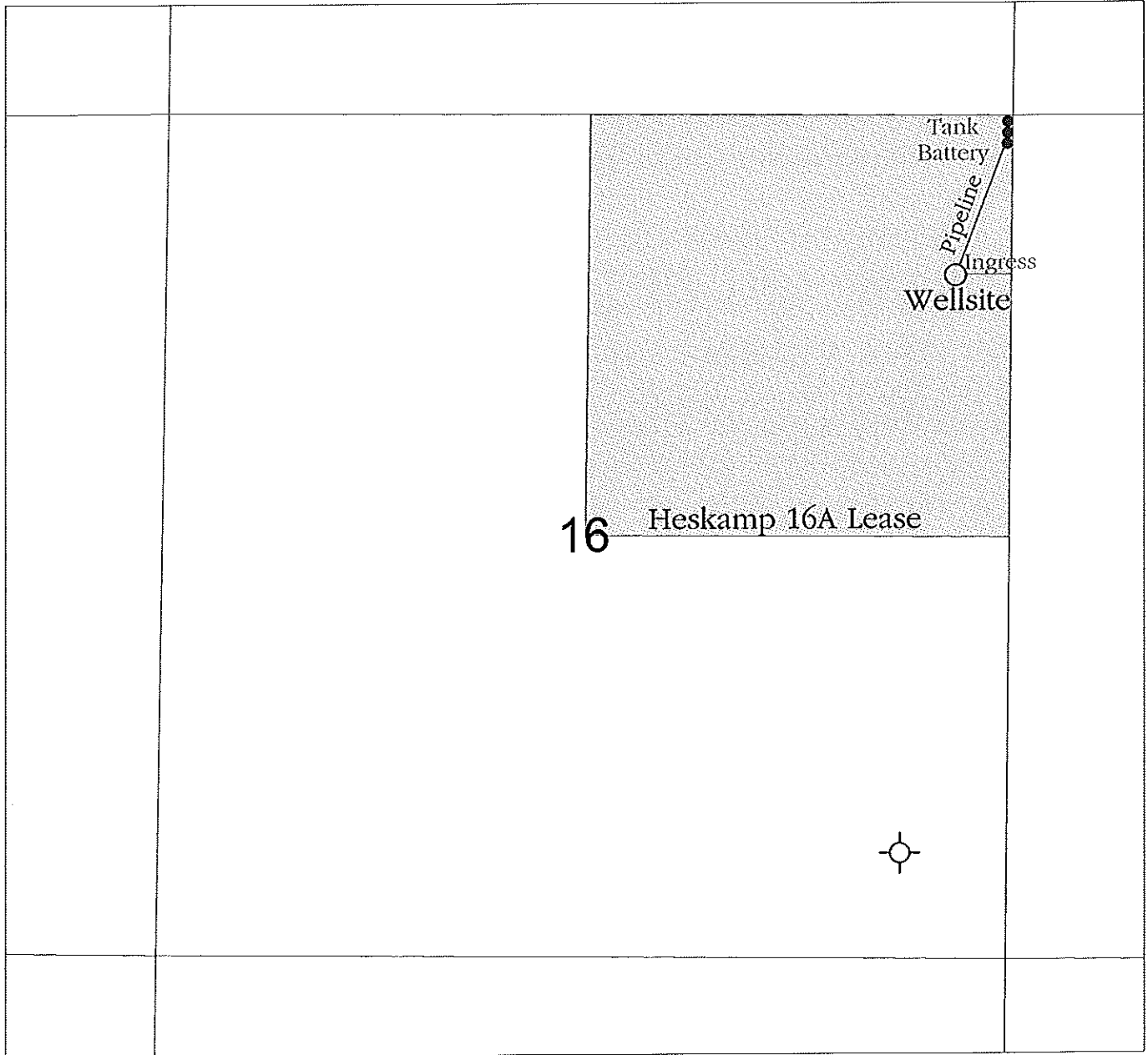
*This drawing does not constitute a monumented survey or a land survey plat.
 This drawing is for construction purposes only.*



KANSAS SURFACE OWNER NOTIFICATION ACT

R 22 W

T
26
S



SCALE = 1:12,000

FORD COUNTY, KANSAS