



TRILOBITE TESTING, INC.

DRILL STEM TEST REPORT

Credo Petroleum Corporation

26 16s 29w Lane, Ks

1801 Broadway Suite 900
Denver, Co 80202

Marjory 1-26

Job Ticket: 46691

DST#: 3

ATTN: Bruce Ard

Test Start: 2012.04.22 @ 21:55:00

GENERAL INFORMATION:

Formation: **Altamont - Ft Scott**

Deviated: No Whipstock: ft (KB)

Time Tool Opened: 23:52:30

Time Test Ended: 04:41:30

Test Type: Conventional Bottom Hole (Reset)

Tester: Bradely Walter

Unit No: 53

Interval: **4356.00 ft (KB) To 4452.00 ft (KB) (TVD)**

Reference Elevations: 2802.00 ft (KB)

Total Depth: 4452.00 ft (KB) (TVD)

2797.00 ft (CF)

Hole Diameter: 7.88 inches Hole Condition: Good

KB to GR/CF: 5.00 ft

Serial #: **8522** Inside

Press @ Run Depth: 27.13 psig @ 4357.00 ft (KB)

Capacity: 8000.00 psig

Start Date: 2012.04.22

End Date:

2012.04.23

Last Calib.: 2012.04.23

Start Time: 21:55:05

End Time:

04:41:29

Time On Btm: 2012.04.22 @ 23:52:15

Time Off Btm: 2012.04.23 @ 02:54:00

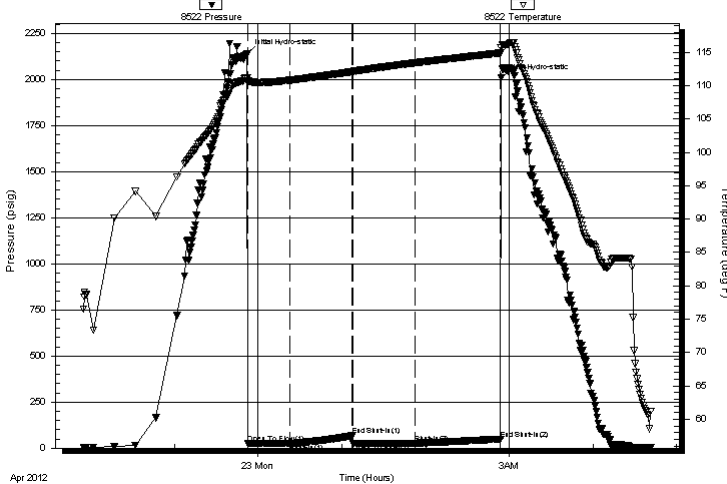
TEST COMMENT: IF: Surface blow, Died @ 10 minutes.

IS: No return.

FF: No blow.

FS: No return.

Pressure vs. Time



PRESSURE SUMMARY

Time (Min.)	Pressure (psig)	Temp (deg F)	Annotation
0	2141.95	111.22	Initial Hydro-static
1	24.95	110.38	Open To Flow (1)
31	26.07	110.81	Shut-In(1)
76	67.37	112.11	End Shut-In(1)
76	26.05	112.10	Open To Flow (2)
121	27.13	113.42	Shut-In(2)
182	47.38	114.89	End Shut-In(2)
182	2006.46	115.74	Final Hydro-static

Recovery

Length (ft)	Description	Volume (bbl)
5.00	mud 100m	0.00

Gas Rates

Choke (inches)	Pressure (psig)	Gas Rate (Mcf/d)

* Recovery from multiple tests



**TRILOBITE
TESTING, INC.**

DRILL STEM TEST REPORT

FLUID SUMMARY

Credo Petroleum Corporaton

26 16s 29w Lane, Ks

1801 Broadway Suite 900
Denver, Co 80202

Marjory 1-26

Job Ticket: 46691

DST#: 3

ATTN: Bruce Ard

Test Start: 2012.04.22 @ 21:55:00

Mud and Cushion Information

Mud Type: Gel Chem

Cushion Type:

Oil API:

0 deg API

Mud Weight: 9.00 lb/gal

Cushion Length:

ft

Water Salinity:

0 ppm

Viscosity: 46.00 sec/qt

Cushion Volume:

bbbl

Water Loss: 6.00 in³

Gas Cushion Type:

Resistivity: ohm.m

Gas Cushion Pressure:

psig

Salinity: 1600.00 ppm

Filter Cake: 1.00 inches

Recovery Information

Recovery Table

Length ft	Description	Volume bbl
5.00	mud 100m	0.000

Total Length: 5.00 ft Total Volume: bbl

Num Fluid Samples: 0

Num Gas Bombs: 0

Serial #:

Laboratory Name:

Laboratory Location:

Recovery Comments:

Serial #: 8522

Inside

Crede Petroleum Corporaton

Marjory 1-26

DST Test Number: 3

