



TRILOBITE TESTING, INC.

DRILL STEM TEST REPORT

Berexco Co LLC
 2020 N Bramblewood
 Wichita Ks 67206 + 1094
 ATTN: Bruce Meyer

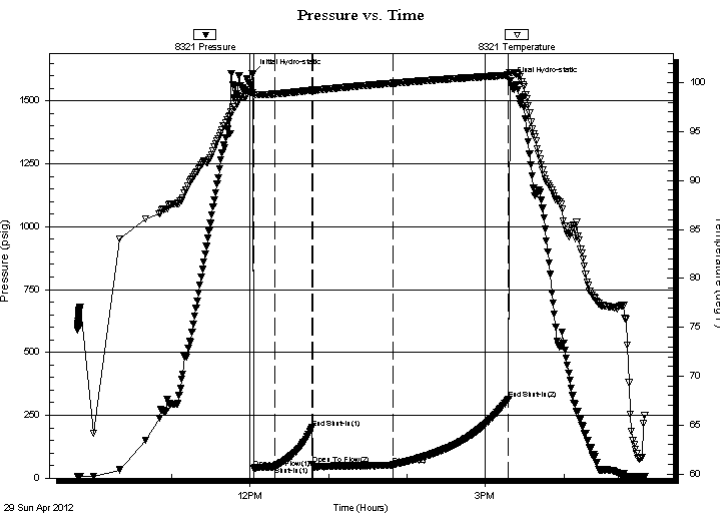
30-14s-14w
Schwie n #1
 Job Ticket: 44783 **DST#: 3**
 Test Start: 2012.04.29 @ 09:48:12

GENERAL INFORMATION:

Formation: **LKC-I & J**
 Deviated: No Whipstock: ft (KB)
 Time Tool Opened: 12:02:42
 Time Test Ended: 17:02:42
Interval: 3150.00 ft (KB) To 3200.00 ft (KB) (TVD)
 Total Depth: 3200.00 ft (KB) (TVD)
 Hole Diameter: 7.88 inches Hole Condition: Good
 Test Type: Conventional Bottom Hole (Reset)
 Tester: Jeff Brown
 Unit No: 44
 Reference Elevations: 1829.00 ft (KB)
 1819.00 ft (CF)
 KB to GR/CF: 10.00 ft

Serial #: 8321 Inside
 Press @ RunDepth: 52.99 psig @ 3187.00 ft (KB) Capacity: 8000.00 psig
 Start Date: 2012.04.29 End Date: 2012.04.29 Last Calib.: 2012.04.29
 Start Time: 09:48:13 End Time: 17:01:42 Time On Btm: 2012.04.29 @ 12:02:12
 Time Off Btm: 2012.04.29 @ 15:18:42

TEST COMMENT: IFP-Weak blow built to 1 1/8 in
 ISI-Dead no blow back
 FFP-Weak blow built to 3 in
 FSI-Dead no blow back



PRESSURE SUMMARY

Time (Min.)	Pressure (psig)	Temp (deg F)	Annotation
0	1609.68	98.97	Initial Hydro-static
1	40.12	98.64	Open To Flow (1)
17	46.47	98.84	Shut-In(1)
45	200.23	99.22	End Shut-In(1)
46	55.82	99.16	Open To Flow (2)
107	52.99	99.95	Shut-In(2)
196	314.67	100.77	End Shut-In(2)
197	1578.24	101.05	Final Hydro-static

Recovery

Length (ft)	Description	Volume (bbl)
30.00	V SOCGM # %G 2%O 95%M	0.15
0.00	90-GIP	0.00

* Recovery from multiple tests

Gas Rates

Choke (inches)	Pressure (psig)	Gas Rate (Mcf/d)



**TRILOBITE
TESTING, INC.**

DRILL STEM TEST REPORT

FLUID SUMMARY

Berexco Co LLC

30-14s-14w

2020 N Bramblewood
Wichita Ks 67206 + 1094

Schwien #1

Job Ticket: 44783

DST#: 3

ATTN: Bruce Meyer

Test Start: 2012.04.29 @ 09:48:12

Mud and Cushion Information

Mud Type: Gel Chem

Cushion Type:

Oil API:

deg API

Mud Weight: 9.00 lb/gal

Cushion Length:

ft

Water Salinity:

ppm

Viscosity: 50.00 sec/qt

Cushion Volume:

bbbl

Water Loss: 9.19 in³

Gas Cushion Type:

Resistivity: ohm.m

Gas Cushion Pressure:

psig

Salinity: 5000.00 ppm

Filter Cake: inches

Recovery Information

Recovery Table

Length ft	Description	Volume bbl
30.00	VSOCGM#%G 2%O 95%M	0.148
0.00	90-GIP	0.000

Total Length: 30.00 ft Total Volume: 0.148 bbl

Num Fluid Samples: 0

Num Gas Bombs: 0

Serial #:

Laboratory Name:

Laboratory Location:

Recovery Comments:

Pressure vs. Time

