



TRILOBITE TESTING, INC.

DRILL STEM TEST REPORT

Oil Producers Inc.
 1710 Waterfront Parkway Wichita Ks.67206
 ATTN: Steve

29/34/32
Brown #1A-29
 Job Ticket: 42363 **DST#: 1**
 Test Start: 2011.12.14 @ 02:15:00

GENERAL INFORMATION:

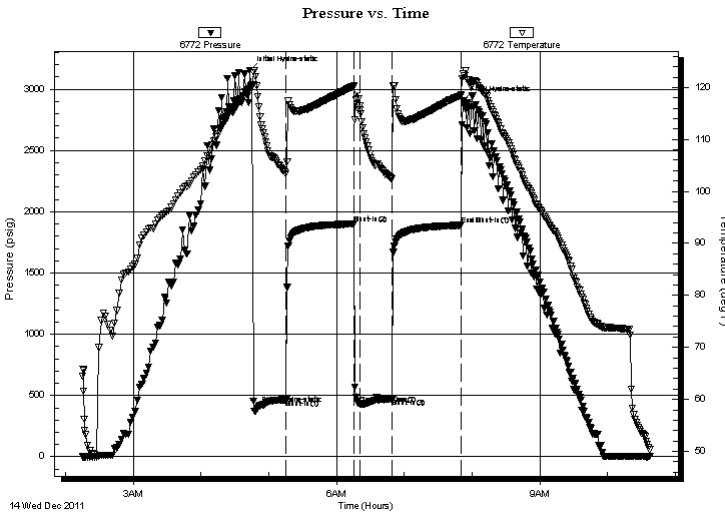
Formation: **Chester**
 Deviated: No Whipstock: ft (KB)
 Time Tool Opened: 06:20:45
 Time Test Ended: 10:37:45
 Interval: **6045.00 ft (KB) To 6090.00 ft (KB) (TVD)**
 Total Depth: 6090.00 ft (KB) (TVD)
 Hole Diameter: 7.78 inches Hole Condition: Fair
 Test Type: Conventional Bottom Hole (Initial)
 Tester: Harley Davidson
 Unit No: 58
 Reference Elevations: 2766.00 ft (KB)
 2754.00 ft (CF)
 KB to GR/CF: 12.00 ft

Serial #: 6772

Press @ Run Depth: 475.12 psig @ ft (KB) Capacity: 8000.00 psig
 Start Date: 2011.12.14 End Date: 2011.12.14 Last Calib.: 2011.12.14
 Start Time: 02:15:05 End Time: 10:37:44 Time On Btm: 2011.12.14 @ 04:43:15
 Time Off Btm: 2011.12.14 @ 04:47:15

TEST COMMENT: IF- Strong blow BOB ASAO, GTS 2.5min.
 IS- No blow back.
 FF- Strong blow BOB,GTS, ASAO.
 FS- No blow back.

PRESSURE SUMMARY



Time (Min.)	Pressure (psig)	Temp (deg F)	Annotation
0	3153.03	119.67	Initial Hydro-static
4	374.73	123.28	Final Hydro-static
32	467.05	103.45	Shut-In(1)
92	1901.68	120.28	Shut-In(2)
98	431.28	115.64	Open To Flow (1)
126	475.12	102.45	Shut-In(3)
187	1889.81	118.53	End Shut-In(1)
189	2907.13	122.56	Final Hydro-static

Recovery

Length (ft)	Description	Volume (bbl)
40.00	30%gas 70%mud trace of water	0.20

Gas Rates

	Choke (inches)	Pressure (psig)	Gas Rate (Mcf/d)
First Gas Rate	1.00	52.00	1908.92
Last Gas Rate	1.00	60.00	2138.91
Max. Gas Rate	1.00	60.00	2138.91



**TRILOBITE
TESTING, INC.**

DRILL STEM TEST REPORT

FLUID SUMMARY

Oil Producers Inc.

29/34/32

1710 Waterfront Parkway Wichita Ks.67206

Brown #1A-29

Job Ticket: 42363

DST#: 1

ATTN: Steve

Test Start: 2011.12.14 @ 02:15:00

Mud and Cushion Information

Mud Type: Gel Chem

Cushion Type:

Oil API:

deg API

Mud Weight: 9.00 lb/gal

Cushion Length:

ft

Water Salinity:

ppm

Viscosity: 61.00 sec/qt

Cushion Volume:

bbbl

Water Loss: in³

Gas Cushion Type:

Resistivity: ohm.m

Gas Cushion Pressure:

psig

Salinity: ppm

Filter Cake: inches

Recovery Information

Recovery Table

Length ft	Description	Volume bbl
40.00	30%gas 70%mud trace of water	0.197

Total Length: 40.00 ft Total Volume: 0.197 bbl

Num Fluid Samples: 0

Num Gas Bombs: 0

Serial #:

Laboratory Name:

Laboratory Location:

Recovery Comments:



**TRILOBITE
TESTING, INC.**

DRILL STEM TEST REPORT

GAS RATES

Oil Producers Inc.

29/34/32

1710 Waterfront Parkway Wichita Ks.67206

Brown #1A-29

Job Ticket: 42363

DST#: 1

ATTN: Steve

Test Start: 2011.12.14 @ 02:15:00

Gas Rates Information

Temperature: 59 (deg F)
Relative Density: 0.65
Z Factor: 0.8

Gas Rates Table

Flow Period	Elapsed Time	Choke (inches)	Pressure (psig)	Gas Rate (Mcf/d)
1	10	1.00	52.00	1908.92
1	10	1.00	52.00	1908.92
1	20	1.00	56.00	2023.92
1	30	1.00	58.00	2081.41
2	10	1.00	54.00	1966.42
2	20	1.00	60.00	2138.91

