



TEMPORARY ABANDONMENT WELL APPLICATION

OPERATOR: License# _____
 Name: _____
 Address 1: _____
 Address 2: _____
 City: _____ State: _____ Zip: _____ + _____
 Contact Person: _____
 Phone: (_____) _____
 Contact Person Email: _____
 Field Contact Person: _____
 Field Contact Person Phone: (_____) _____

API No. 15- _____
 Spot Description: _____
 _____ Sec. _____ Twp. _____ S. R. _____ E W
 _____ feet from N / S Line of Section
 _____ feet from E / W Line of Section
 GPS Location: Lat: _____, Long: _____
(e.g. xx.xxxxx) (e.g. -xxx.xxxxx)
 County: _____
 Lease Name: _____ Well #: _____
 Elevation: _____ GL KB
 Well Type: (check one) Oil Gas OG WSW Other: _____
 SWD Permit #: _____ ENHR Permit #: _____
 Gas Storage Permit #: _____
 Spud Date: _____ Date Shut-In: _____

	Conductor	Surface	Production	Intermediate	Liner	Tubing
Size						
Setting Depth						
Amount of Cement						
Top of Cement						
Bottom of Cement						

Casing Fluid Level: _____ How Determined? _____ Date: _____
 Casing Squeeze(s): _____ to _____ w / _____ sacks of cement, _____ to _____ w / _____ sacks of cement. Date: _____
(top) (bottom) (top) (bottom)
 Do you have a valid Oil & Gas Lease? Yes No
 Depth and Type: Junk in Hole at _____ Tools in Hole at _____ Casing Leaks: Yes No Depth of casing leak(s): _____
(depth) (depth)
 Type Completion: ALT. I ALT. II Depth of: DV Tool: _____ w / _____ sacks of cement Port Collar: _____ w / _____ sack of cement
(depth) (depth)
 Packer Type: _____ Size: _____ Inch Set at: _____ Feet
 Total Depth: _____ Plug Back Depth: _____ Plug Back Method: _____

Geological Data:

Formation Name	Formation Top	Formation Base	Completion Information
1. _____	At: _____	to _____ Feet	Perforation Interval _____ to _____ Feet or Open Hole Interval _____ to _____ Feet
2. _____	At: _____	to _____ Feet	Perforation Interval _____ to _____ Feet or Open Hole Interval _____ to _____ Feet

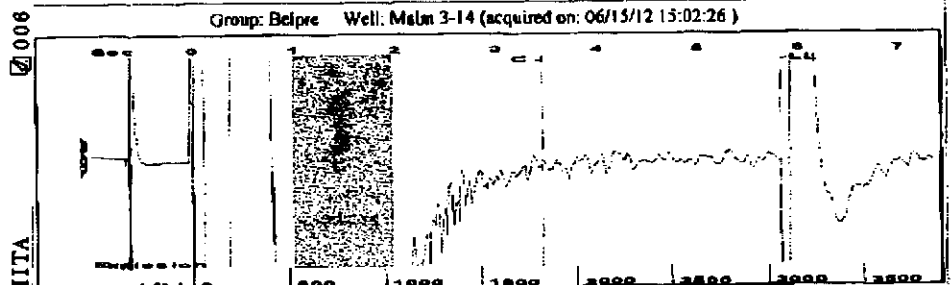
Submitted Electronically

Do NOT Write in This Space - KCC USE ONLY	Date Tested: _____	Results: _____	Date Plugged: _____	Date Repaired: _____	Date Put Back in Service: _____
	Review Completed by: _____	Comments: _____	TA Approved: Yes <input type="checkbox"/> Denied <input type="checkbox"/>		

Mail to the Appropriate KCC Conservation Office:

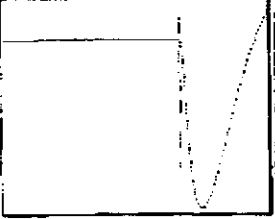
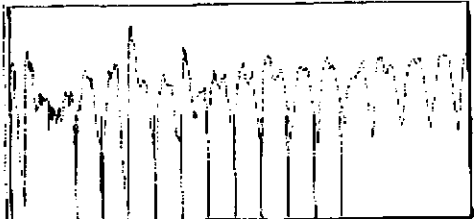
	KCC District Office #1 - 210 E. Frontview, Suite A, Dodge City, KS 67801	Phone 620.225.8888
	KCC District Office #2 - 3450 N. Rock Road, Building 600, Suite 601, Wichita, KS 67226	Phone 316.630.4000
	KCC District Office #3 - 1500 SW Seventh Steet, Chanute, KS 66720	Phone 620.432.2300
	KCC District Office #4 - 2301 E. 13th Street, Hays, KS 67601-2651	Phone 785.625.0550
	Underground Porosity Gas Storage (UPGS) 8200 E. 34th Street Circle N., Suite 1003, Wichita, KS 67226	Phone 316.734.4933

Received Fax: Jun 18 2012 6:52AM Fax Station: FG Holl Co. LLC
 F G HOLL ELLINWOOD WICHITA 006

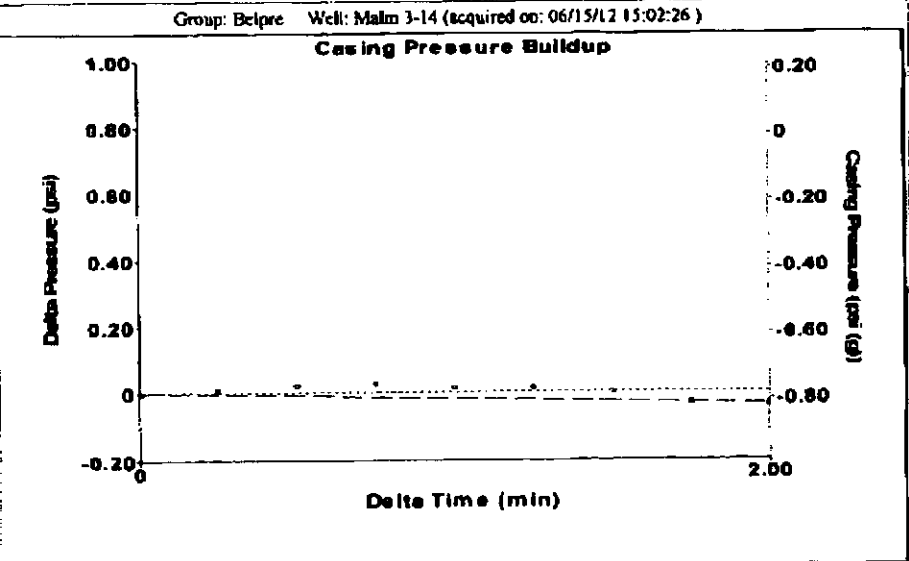


Filter Type High Pass Automatic Collar Count Yes
 Manual Acoustic Velocity 1069.08 ft/s Manual FTS/sec 17.2712
 Time 5.822 sec
 Joints 99.1135 Jts
 Depth 3067.56 ft

[1.0 to 2.0 (Sec)]



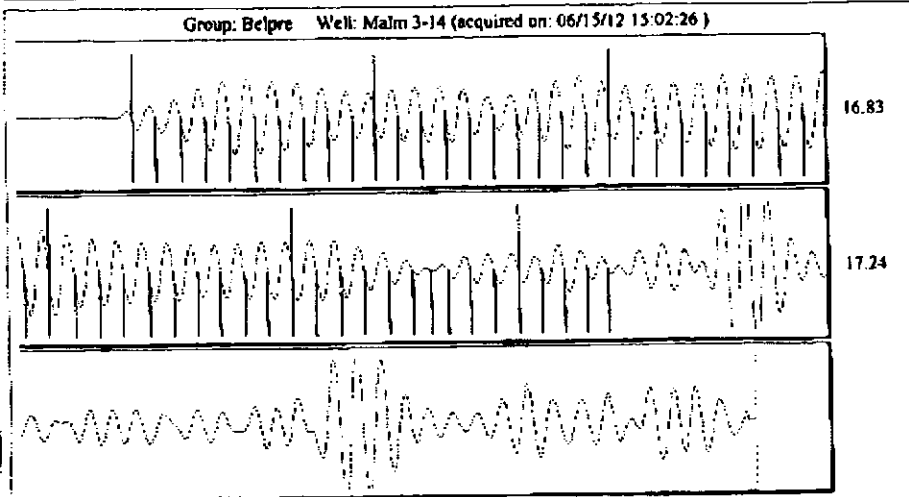
Analysis Method: Automatic



Change in Pressure -0.04 psi PT8493
 Change in Time 2.00 min Range 0 - ? psi

Group: Belpre Well: Malm 3-14 (acquired on: 06/15/12 15:02:26)

Production Current Oil .. Water .. Gas .. Potential .. BBL/D .. BBL/D .. Msc/D IPR Method PBHP/SBHP Production Efficiency 0.0 Oil 40 deg API Water 1.05 Sp.Gr.H2O Gas 0.93 Sp.Gr.AIR Acoustic Velocity 1053.78 ft/s Formation Submergence Total Gaseous Liquid Column HT (TVD) 1266 ft Equivalent Gas Free Liquid HT (TVD) 1228 ft Acoustic Test	Casing Pressure -0.8 psi (g) Casing Pressure Buildup -0.017 psi 2.00 min Gas/Liquid Interface Pressure 0.6 psi (g) Liquid Level Depth 3067.56 ft Pump Intake Depth 4334.00 ft Formation Depth 4329.00 ft Pump Intake 415.7 psi (g) Producing BHP 414.0 psi (g) Static BHP - psi (g)	Producing Articular Gas Flow 1 Msc/D % Liquid 97 %
---	--	--



Acoustic Velocity 1053.78 ft/s Joints counted 34
 Joints Per Second 17.024 jts/sec Joints to liquid level 99.1135
 Depth to liquid level 3067.56 ft Filter Width 15.2712
 Automatic Collar Count Yes Time to 1st Collar 0.288 3.46