



TEMPORARY ABANDONMENT WELL APPLICATION

OPERATOR: License# _____
 Name: _____
 Address 1: _____
 Address 2: _____
 City: _____ State: _____ Zip: _____ + _____
 Contact Person: _____
 Phone: (_____) _____
 Contact Person Email: _____
 Field Contact Person: _____
 Field Contact Person Phone: (_____) _____

API No. 15- _____
 Spot Description: _____
 _____ - _____ - _____ - _____ Sec. _____ Twp. _____ S. R. _____ E W
 _____ feet from N / S Line of Section
 _____ feet from E / W Line of Section
 GPS Location: Lat: _____, Long: _____
(e.g. xx.xxxxx) (e.g. -xxx.xxxxx)
 Datum: NAD27 NAD83 WGS84
 County: _____ Elevation: _____ GL KB
 Lease Name: _____ Well #: _____
 Well Type: (check one) Oil Gas OG WSW Other: _____
 SWD Permit #: _____ ENHR Permit #: _____
 Gas Storage Permit #: _____
 Spud Date: _____ Date Shut-In: _____

	Conductor	Surface	Production	Intermediate	Liner	Tubing
Size						
Setting Depth						
Amount of Cement						
Top of Cement						
Bottom of Cement						

Casing Fluid Level from Surface: _____ How Determined? _____ Date: _____

Casing Squeeze(s): _____ to _____ w / _____ sacks of cement, _____ to _____ w / _____ sacks of cement. Date: _____
(top) (bottom) (top) (bottom)

Do you have a valid Oil & Gas Lease? Yes No

Depth and Type: Junk in Hole at _____ Tools in Hole at _____ Casing Leaks: Yes No Depth of casing leak(s): _____
(depth) (depth)

Type Completion: ALT. I ALT. II Depth of: DV Tool: _____ w / _____ sacks of cement Port Collar: _____ w / _____ sack of cement
(depth) (depth)

Packer Type: _____ Size: _____ Inch Set at: _____ Feet

Total Depth: _____ Plug Back Depth: _____ Plug Back Method: _____

Geological Data:

Formation Name	Formation Top	Formation Base	Completion Information
1. _____	At: _____	to _____ Feet	Perforation Interval _____ to _____ Feet or Open Hole Interval _____ to _____ Feet
2. _____	At: _____	to _____ Feet	Perforation Interval _____ to _____ Feet or Open Hole Interval _____ to _____ Feet

~~UNDER PENALTY OF PERJURY I HEREBY ATTEST THAT THE INFORMATION CONTAINED HEREIN IS TRUE AND CORRECT TO THE BEST OF MY KNOWLEDGE~~

Submitted Electronically

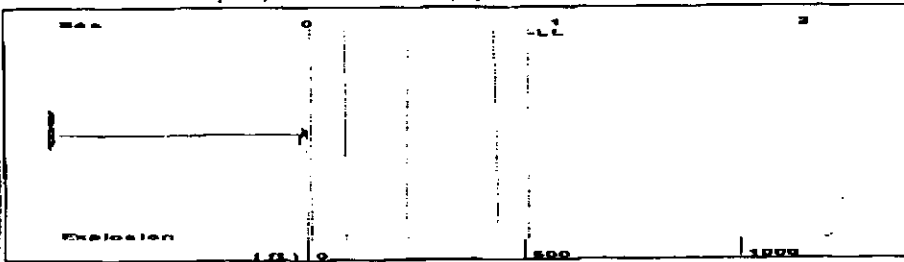
Do NOT Write in This Space - KCC USE ONLY	Date Tested: _____	Results: _____	Date Plugged: _____	Date Repaired: _____	Date Put Back in Service: _____
	Review Completed by: _____ Comments: _____				
TA Approved: <input type="checkbox"/> Yes <input type="checkbox"/> Denied Date: _____					

Mail to the Appropriate KCC Conservation Office:

	KCC District Office #1 - 210 E. Frontview, Suite A, Dodge City, KS 67801	Phone 620.225.8888
	KCC District Office #2 / UPGS - 3450 N. Rock Road, Building 600, Suite 601, Wichita, KS 67226	Phone 316.630.4000
	KCC District Office #3 - 1500 SW Seventh Steet, Chanute, KS 66720	Phone 620.432.2300
	KCC District Office #4 - 2301 E. 13th Street, Hays, KS 67601-2651	Phone 785.625.0550

06/17/2012 19:27 FAX 620 584 2062 F G HOLL ELLINWOOD WICHITA 005

Group: Belpre Well: Malm 4-14 (acquired on: 06/15/12 15:13:18)



Time 0.885 sec
 Joints 16.0528 Jts
 Depth 508.88 ft

Liquid level calculated with user supplied Acoustic Velocity

Acoustic Velocity 1150 ft/s



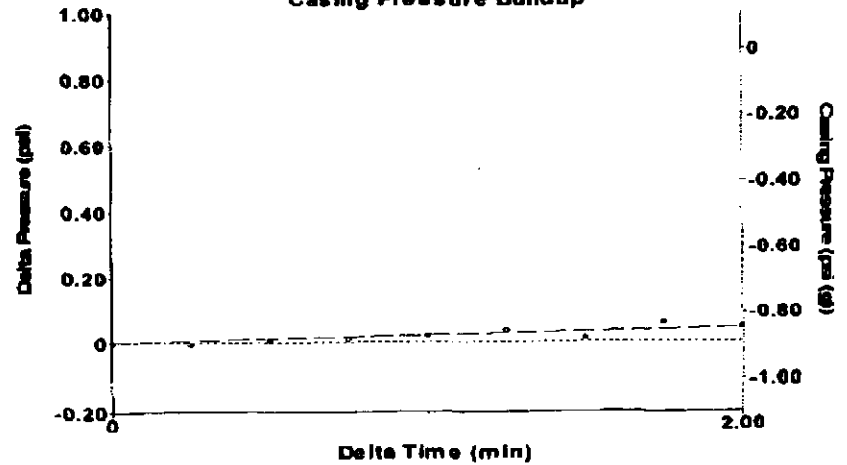
Analysis Method: Acoustic Velocity

Group: Belpre Well: Malm 4-14 (acquired on: 06/15/12 15:13:18)

Production	Potential	Casing Pressure	Producing
Current		-0.9 psi (g)	
Oil -*- BBL/D		Casing Pressure Buildup	Annular Gas Flow
Water -*- BBL/D		0.043 psi	0 Mscf/D
Gas -*- Mscf/D		2.00 min	% Liquid 100 %
IPR Method Vogel		Gas/Liquid Interface Pressure	
PBHP/SBHP -*-		-0.7 psi (g)	
Production Efficiency 0.0		Liquid Level Depth	
Oil 40 deg API		508.88 ft	
Water 1.05 Sp.Gr.H2O		Pump Intake Depth	
Gas 0.85 Sp.Gr.AIR		-* ft	
Acoustic Velocity 1150 ft/s		Formation Depth	
		4325.00 ft	
Formation Submergence		Pump Intake	
Total Gaseous Liquid Column HT (TVD) 3316 ft		-*- psi (g)	
Equivalent Gas Free Liquid HT (TVD) 3816 ft		Producing BHP	
Acoustic Test		1734.3 psi (g)	
		Static BHP	
		-*- psi (g)	

Group: Belpre Well: Malm 4-14 (acquired on: 06/15/12 15:13:18)

Casing Pressure Buildup



Change in Pressure 0.04 psi FT8493
 Range 0-? psi
 Change in Time 2.00 min

Group: Belpre Well: Malm 4-14 (acquired on: 06/15/12 15:13:18)

Entered Acoustic Velocity for Liquid Level determination

Conservation Division
District Office No. 1
210 E. Frontview, Suite A
Dodge City, KS 67801



Phone: 620-225-8888
Fax: 620-225-8885
<http://kcc.ks.gov/>

Mark Sievers, Chairman
Ward Loyd, Commissioner
Thomas E. Wright, Commissioner

Sam Brownback, Governor

June 25, 2012

Loveness Mpanje
F. G. Holl Company L.L.C.
9431 E CENTRAL STE 100
WICHITA, KS 67206-2563

Re: Temporary Abandonment
API 15-047-21186-00-00
MALM 4-14
NE/4 Sec.14-24S-17W
Edwards County, Kansas

Dear Loveness Mpanje:

Your application for Temporary Abandonment (TA) of the above-listed well is denied for the following reasons(s):

HGFLD - High fluid level

In accordance with K.A.R. 82-3-111, this well must be plugged or returned to service by July 25, 2012.

Sincerely,

Steve Pfeifer